


FOR LEASE

**LIGHT INDUSTRIAL/
COMMERCIAL
KITCHEN**

**205 NE MLK Blvd.
Portland, OR 97232**

This approx. 4,050 SF space makes a great flex commercial kitchen or food prep storage space, has overhead door, restroom, kitchenette, and grease interceptor

Great central Eastside location with access to freeway and the central city

 Eli Haworth-Kaufka
Principal Broker
503-502-9403
eli@cloudcityrealty.com



PORTLAND, OR

CLOUD CITY REALTY

GOOD WOOD

4,050 SF

BUILDING HIGHLIGHTS



- Accommodates a variety of kitchen and light industrial uses
- High ceilings
- Grease interceptor, no hood but could install
- 3 basin sink
- Private restroom
- Kitchenette
- Grade-level loading dock w/12' overhead door
- Good natural light
- Showroom on NE MLK

\$18/sf + Utilities
modified gross lease



ELI HAWORTH-KAUFKA
503-502-9403
eli@cloudcityrealty.com

Cloud City Realty
5901 NE Shaver St
Portland, OR 97213
www.cloudcityrealty.com
971-339-1456



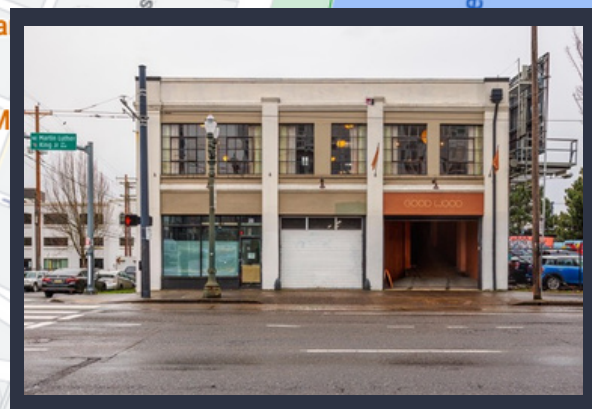
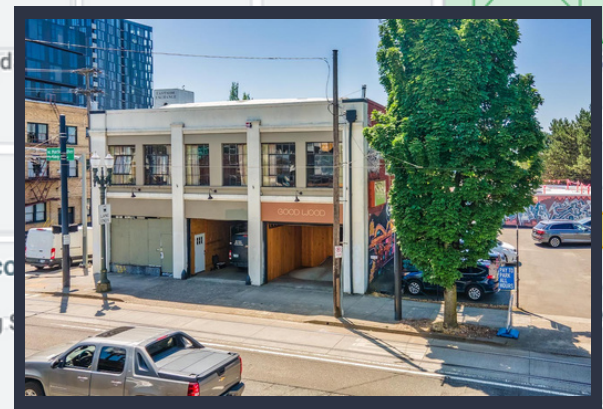
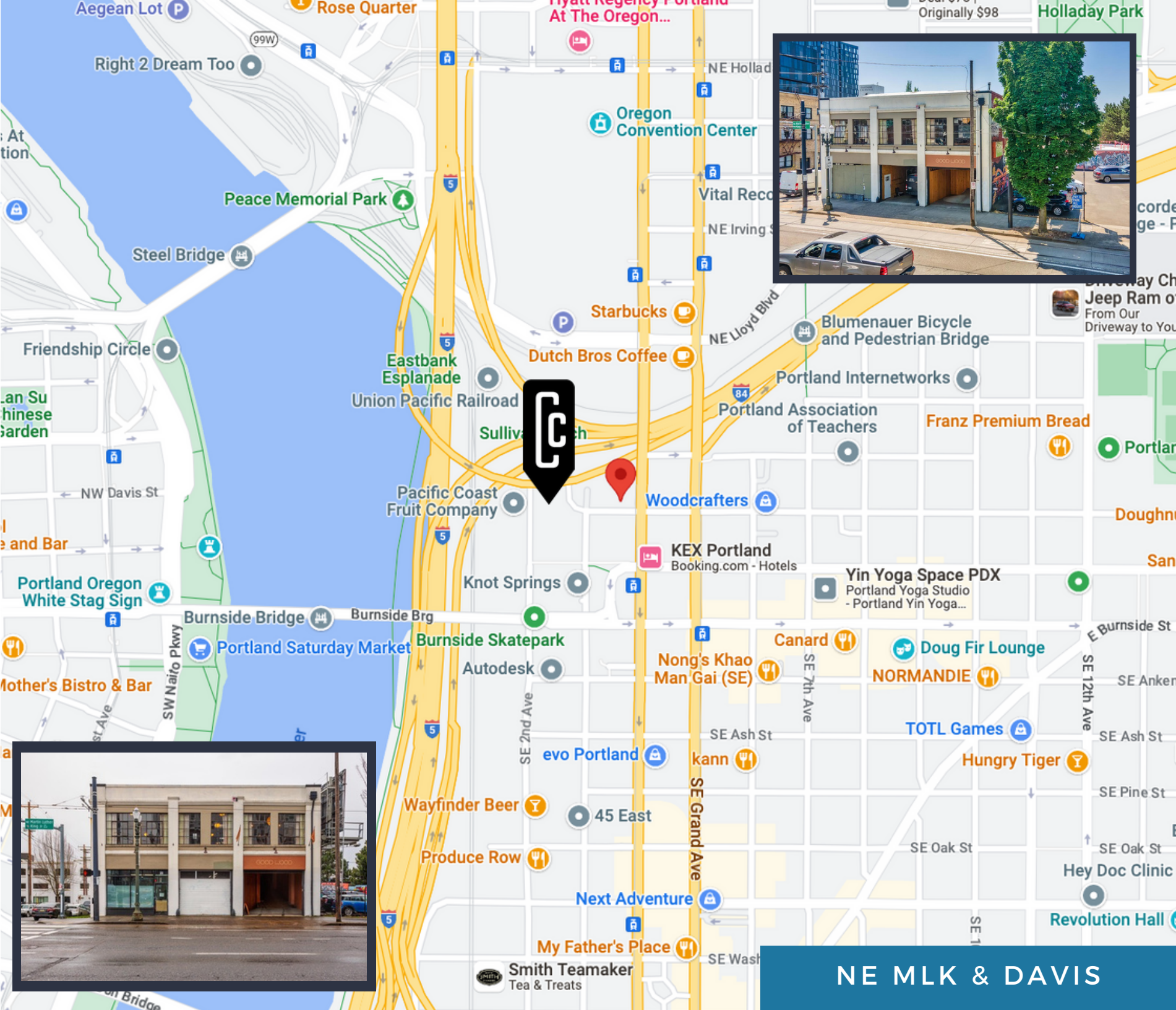
BUILDING HIGHLIGHTS



Cloud City Realty
5901 NE Shaver St
Portland, OR 97213
www.cloudcityrealty.com
971-339-1456



Cloud City Realty
5901 NE Shaver St
Portland, OR 97213
www.cloudcityrealty.com
971-339-1456



NE MLK & DAVIS