



LAND FOR SALE IN CARTHAGE

PROPERTY OVERVIEW

TRACT | TRACT 2

PRICE | \$884,000

ACREAGE | 136.32 +/- ACRES

PLAT | BOOK 19, PAGE 386

ZONING | RURAL AGRICULTURAL

For sale: 136.32 +/- acres along Old Carthage Road in Carthage. Tract 2 offers 3,920 feet of road frontage with rolling topography and is predominantly mixed hardwood of various ages. Approximately 5 +/- acres are located east of Mount Carmel Road. A 30-ft easement will be obtained along the road frontage for the water treatment facility.

HOLLY BELL
NC BROKER
C: 910.690.1065
HOLLY@CSGNC.COM

CAROLINA SUMMIT GROUP
235 E Pennsylvania Ave.
Southern Pines, NC 28387
910.684.5353
carolinasmittgroup.com

MATT WIMBERLY
NC BROKER
C: 910.639.0124
MATT@CSGNC.COM

TBD OLD CARTHAGE ROAD
CARTHAGE, NC 28327



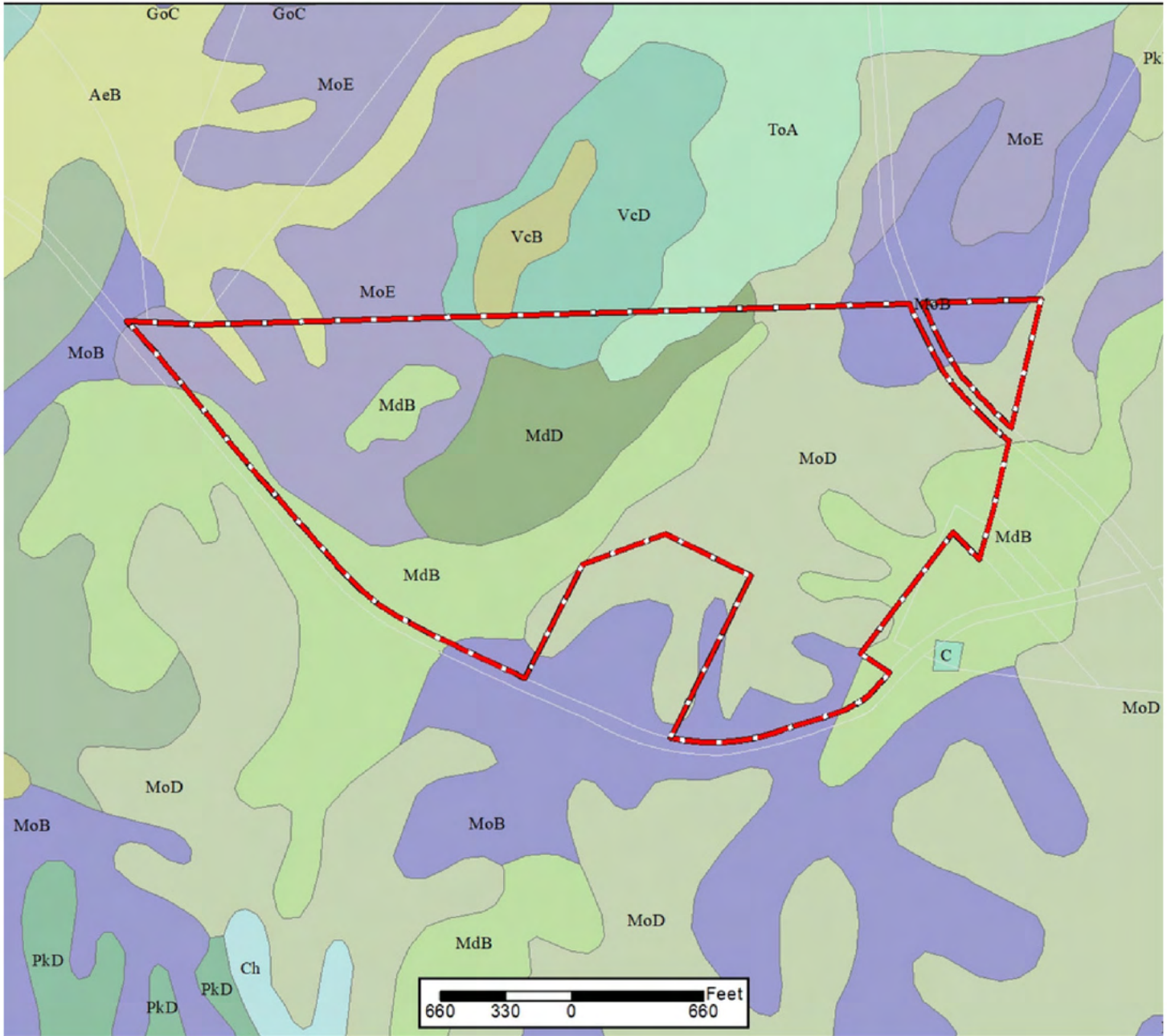
HOLLY BELL
NC BROKER
C: 910.690.1065
HOLLY@CSGNC.COM

CAROLINA SUMMIT GROUP
235 E Pennsylvania Ave.
Southern Pines, NC 28387
910.684.5353
carolinasummitgroup.com

MATT WIMBERLY
NC BROKER
C: 910.639.0124
MATT@CSGNC.COM

SOIL MAP | TRACT 2

TBD OLD CARTHAGE ROAD - +/-137.97
 PORTION OF PARCEL ID 00008183 OCCONEECHEE COUNCIL BOY SCOUTS



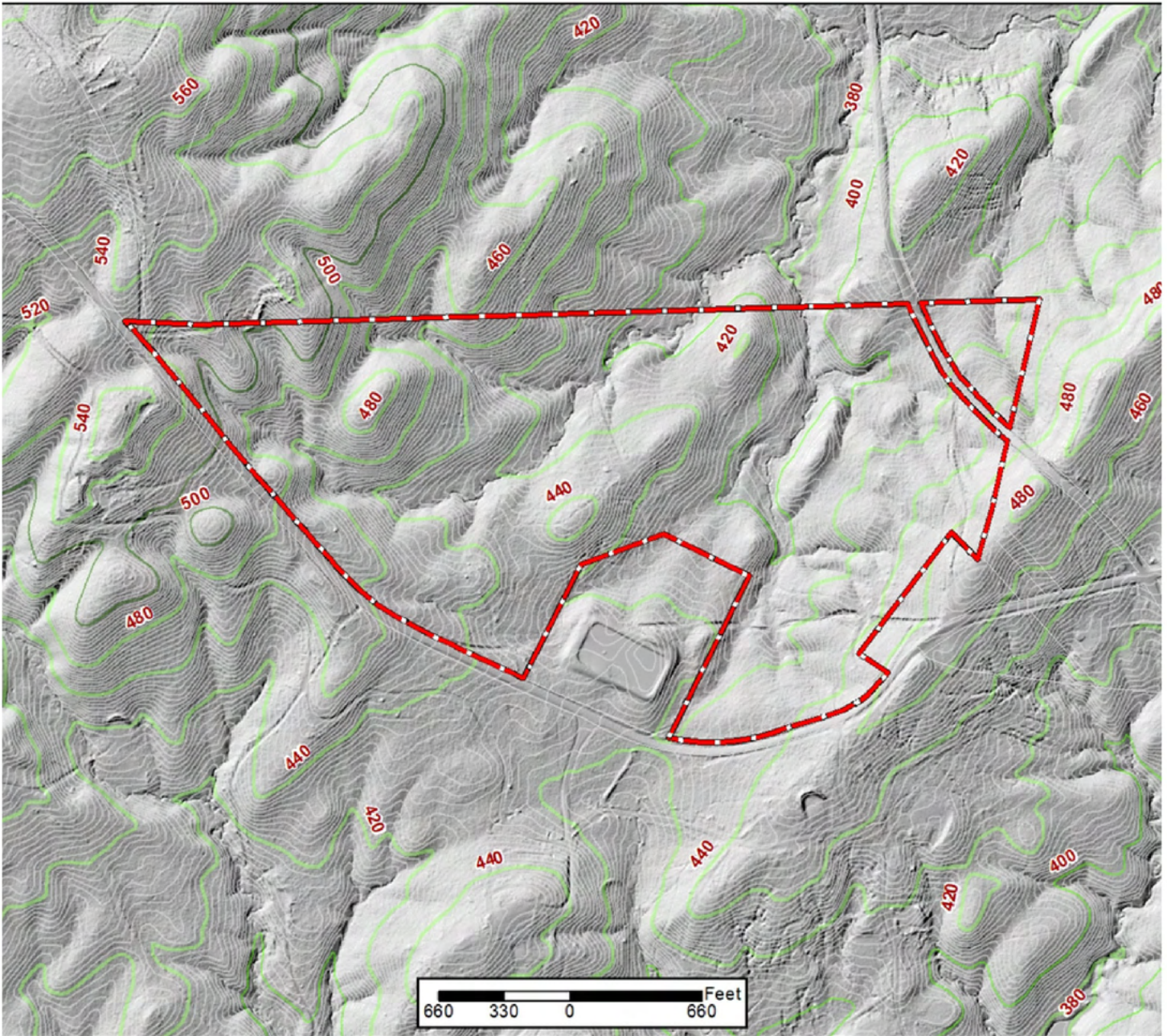
HOLLY BELL
 NC BROKER
 C: 910.690.1065
 HOLLY@CSGNC.COM

CAROLINA SUMMIT GROUP
 235 E Pennsylvania Ave.
 Southern Pines, NC 28387
 910.684.5353
 carolinasummitgroup.com

MATT WIMBERLY
 NC BROKER
 C: 910.639.0124
 MATT@CSGNC.COM

TOPO MAP | TRACT 2

TBD OLD CARTHAGE ROAD - +/-137.97
PORTION OF PARCEL ID 00008183 OCCONEECHEE COUNCIL BOY SCOUTS



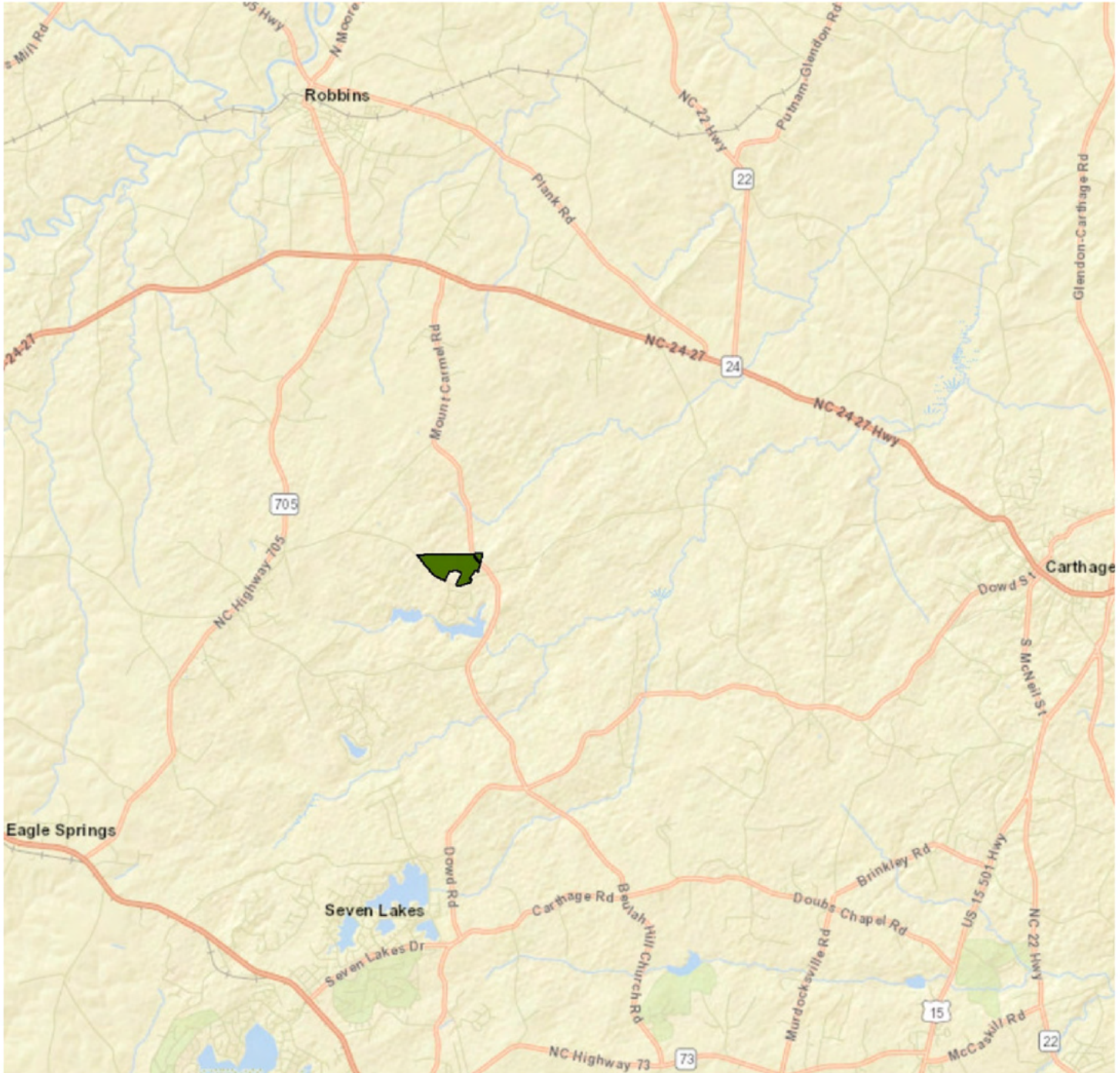
HOLLY BELL
NC BROKER
C: 910.690.1065
HOLLY@CSGNC.COM

CAROLINA SUMMIT GROUP
235 E Pennsylvania Ave.
Southern Pines, NC 28387
910.684.5353
carolinasmittgroup.com

MATT WIMBERLY
NC BROKER
C: 910.639.0124
MATT@CSGNC.COM

TBD OLD CARTHAGE ROAD
CARTHAGE, NC 28327

LOCATION MAP



HOLLY BELL
NC BROKER
C: 910.690.1065
HOLLY@CSGNC.COM

CAROLINA SUMMIT GROUP
235 E Pennsylvania Ave.
Southern Pines, NC 28387
910.684.5353
carolinasmittgroup.com

MATT WIMBERLY
NC BROKER
C: 910.639.0124
MATT@CSGNC.COM