

INDUSTRIAL LAND W/ APPROVED BLDG PLANS

FOR SALE: 1080 HENSLEY STREET | RICHMOND, CA



LISTING DATA:

- 1.5± Acres (65,775± SF) of Land on 2 Parcels
- Zoned LI - Light Industrial
[Click Here for Zoning Codes](#)
- Corner Location
- Off Richmond Pkwy
- Conditional Use and Design Review Permit for Construction of Two Industrial Buildings Totaling Approximately 9,886± sq. ft.
- Asking Price: \$2,100,000



EXCLUSIVE AGENT:

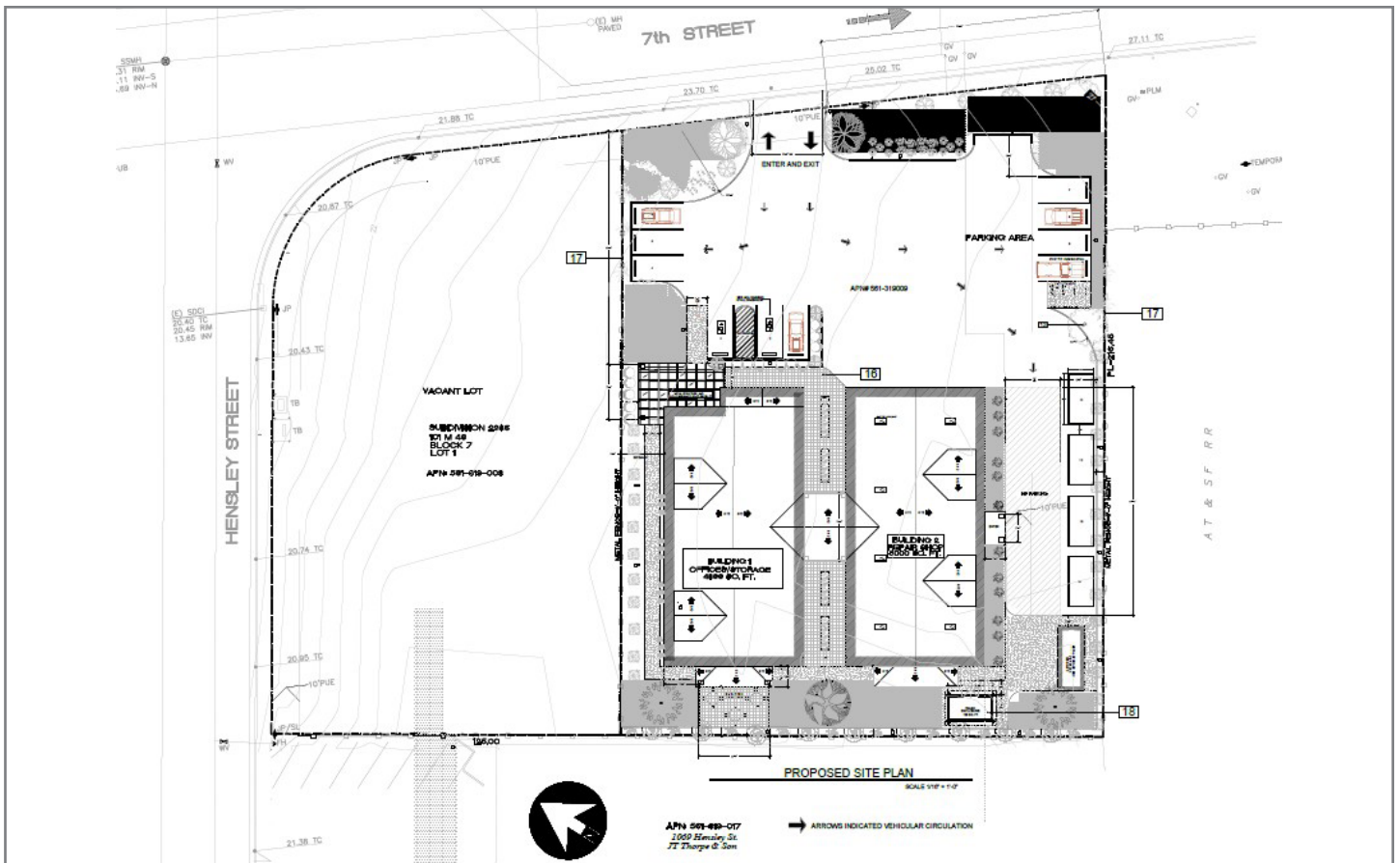
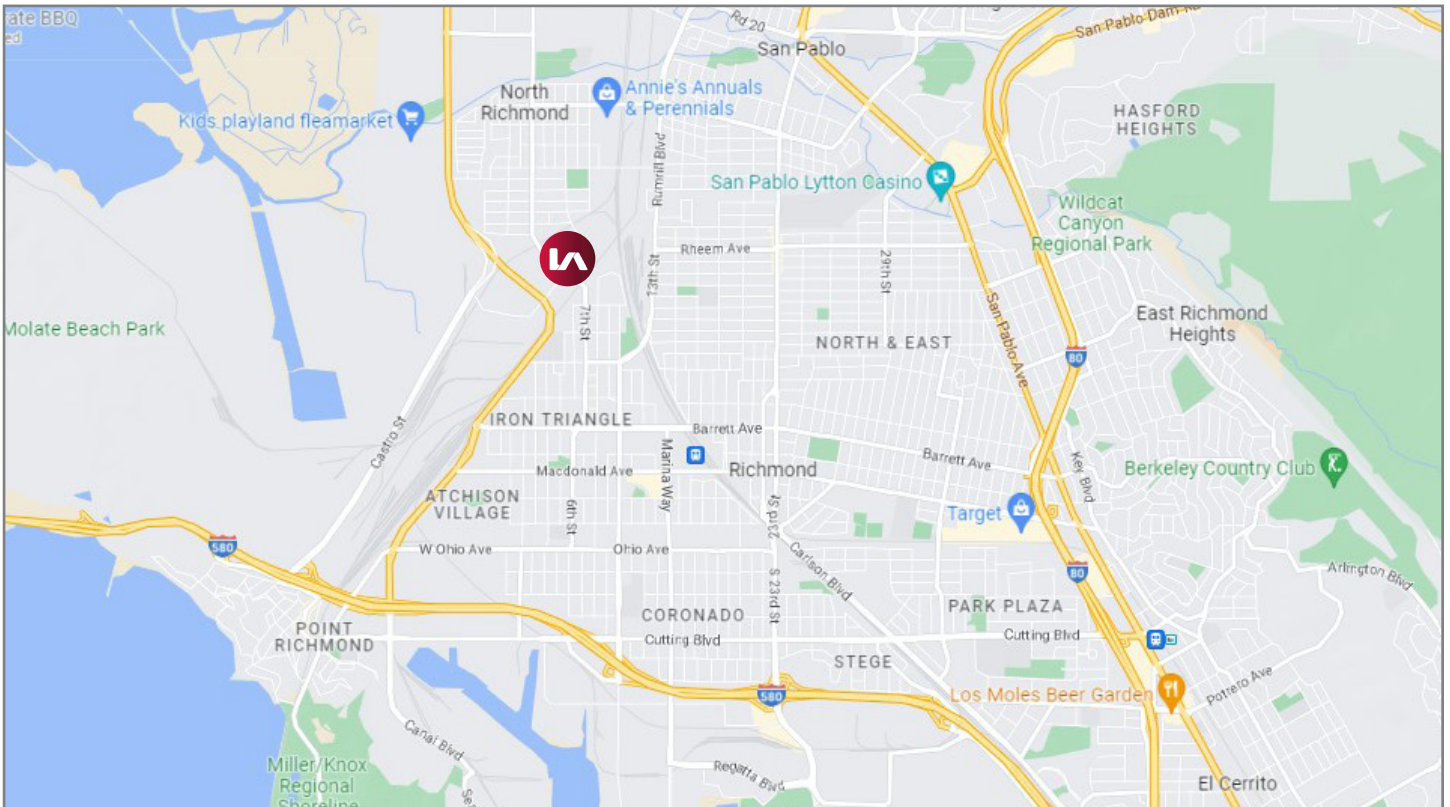
Ryan Davidson, Principal

E \\ rdavidson@lee-associates.com

P \\ 510.469.3300 | LIC# 01400582

INDUSTRIAL LAND W/ APPROVED BLDG PLANS

FOR SALE: 1080 HENSLEY STREET | RICHMOND, CA



Lee & Associates Oakland Commercial Real Estate | 520 3rd Street, Suite 105, Oakland, CA 94607 | www.lee-associates.com

All information furnished regarding property for sale, rental or financing is from sources deemed reliable, but no warranty or representation is made to the accuracy thereof and same is submitted to errors, omissions, change of price, rental or other conditions prior to sale, lease or financing or withdrawal without notice. No liability of any kind is to be imposed on the broker herein.

INDUSTRIAL LAND W/ APPROVED BLDG PLANS
FOR SALE: 1080 HENSLEY STREET | RICHMOND, CA

