

61 COMMERCE DRIVE

NEW CLASS A INDUSTRIAL MANUFACTURING CAMPUS

PERRIS COMMERCE CENTER
FOR SALE OR LEASE
NEW +/- 7,755 SQ. FT. BUILDING

DON ARCHER
VICE PRESIDENT
909 243 7600 TEL | 714 235 8131 CELL
DARCHER@NAICAPITAL.COM
CAL DRE LIC #01393449





PROPERTY INFORMATION

INDUSTRIAL MANUFACTURING CAMPUS

61 COMMERCE DRIVE

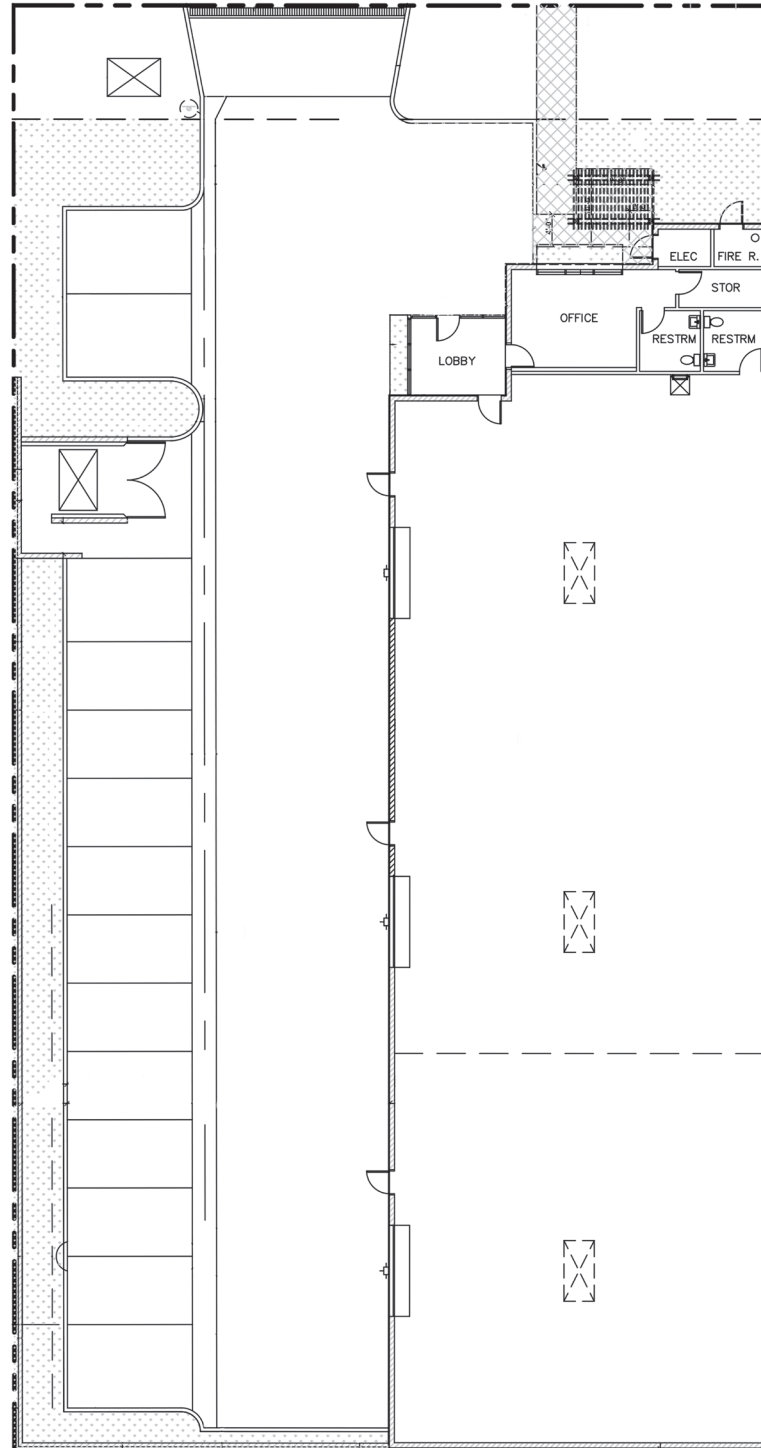
Building Size	7,755	Cross-streets Perris Blvd. and Commerce Drive. About 20 minutes from Downtown Riverside and about a little more than an hour from the Port of Los Angeles.
Lot Size	.44 Acres	
Building Class	A	Construction Complete - 7,755 SF Buildings On .44 Acres: High Image Industrial Building; Property Features - 732 SF Office, 1 Private Office, 1 Lobby, 1 Office Restroom, 1 Shop/Warehouse Restroom, 800 Amps, 3 Phase Power - 1200 Amp Possible, 15 Parking Slots, Clearance Height 18 Ft, Sprinklers, Possible Yard
Year Built	2019	

No warranty, express or implied, is made as to the accuracy of the information contained herein. This information is submitted subject to errors, omissions, change of price, rental or other conditions, withdrawal without notice, and is subject to any special listing conditions imposed by our principals. Cooperating brokers, buyers, tenants and other parties who receive this document should not rely on it, but should use it as a starting point of analysis, and should independently confirm the accuracy of the information contained herein through a due diligence review of the books, records, files and documents that constitute reliable sources of the information described herein.

SITE MAP

INDUSTRIAL MANUFACTURING CAMPUS

61 COMMERCE DRIVE



PARCEL MAP

INDUSTRIAL MANUFACTURING CAMPUS

61 COMMERCE DRIVE



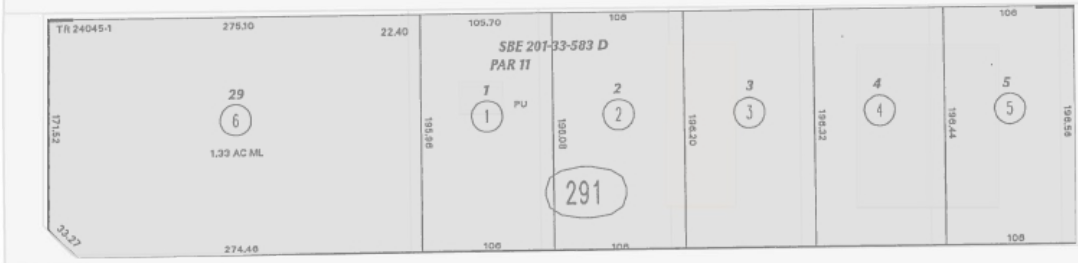
N Perris Blvd

305
30

306
37

12

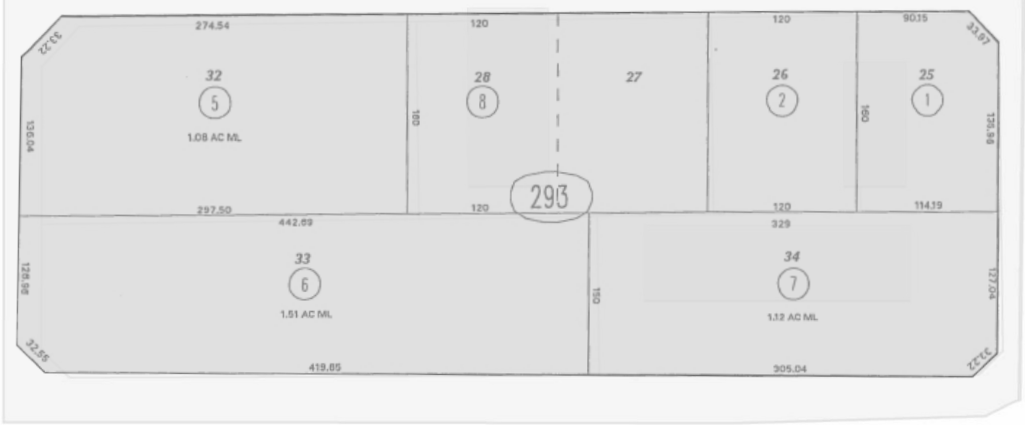
13



Commerce Dr



Business Park Dr



E Rider St

27



LOCATION OVERVIEW

INDUSTRIAL MANUFACTURING CAMPUS

61 COMMERCE DRIVE

The property is in the city of Perris in Riverside County within the Inland Empire region. Perris sits in a central location within western Riverside County where Interstate 215 meets State Route 74. The parcel lies on Commerce Drive off N Perris Blvd, between E Rider St and Ramona Expy, approximately 70 miles southeast of Downtown Los Angeles. Its location enjoys proximity to Interstate 215, which is only about 3.3 miles to the west as well as State Route 74, roughly 4.5 miles to the southwest. Additionally, this site is around 80 miles from the Ports of Los Angeles and Long Beach.

**SIZE: 31.5
SQUARE MILES**



**HOUSEHOLDS:
18,980***



**POPULATION:
78,818***



**MEDIAN HOUSEHOLD
INCOME: \$57,838***



Perris, CA lies in the Inland Empire, one of Southern California's fastest growing regions. As one of Riverside County's premiere industrial and logistics hubs, this community presents excellent opportunities for new businesses along with expansions for established companies. Perris offers a convenient location, a qualified, motivated labor pool, pro-business environment, and superior quality of life for residents.

*2018, Estimated by Applied Geographic Solutions

LOCATION OVERVIEW

INDUSTRIAL MANUFACTURING CAMPUS

61 COMMERCE DRIVE

Google Earth

W Placentia Ave

E Rider St

W Rider St

N Perris Blvd

215



AERIAL MAP

Perris developed a solid reputation as a family-friendly community with affordable housing during the last ten years. Situated near the city of Riverside, Moreno Valley and Hemet, Perris benefits from its central position in the Inland Empire. Although many of the city's workers currently commute outside of Perris for employment, residents are eager to embrace positions closer to home. Perris provides a strong talent pool with 58.3% of the population aged 20 to 64. Approximately 31% of residents obtained a high school diploma while 37.2% attended some college or higher. This educated population translates to 54.6% blue collar workers and 45.4% white collar employees primarily in the Sales/Office and Production, Transport, Material Moving sectors.

Residents support the local economy in the following ways:

- \$1B Total Annual Household Expenditures
- \$489M Total Annual Retail Expenditures
- \$4,407 Total Monthly Household Expenditures
- \$2,148 Total Monthly Retail Expenditures

3Q 2018 Inland Empire Industrial Market Highlights

- 8.9% total availability
- The average asking rent increased 10.5% year over year
- Vacancy rate inched up 30 basis points from 2Q 2018
- The average sales price registered at \$109/SF