

For lease

For Sublease

16,124 SF Office Logistics/Production Space

22520 GATEWAY CENTER DRIVE,
CLARKSBURG, MARYLAND 20871

Sublease Details

- **Premises:** 16,124 RSF, Suite 400
- **Sublease term:** Through August 31, 2027
- **Asking rent:** \$12.00/SF NNN
- **Available:** Immediately



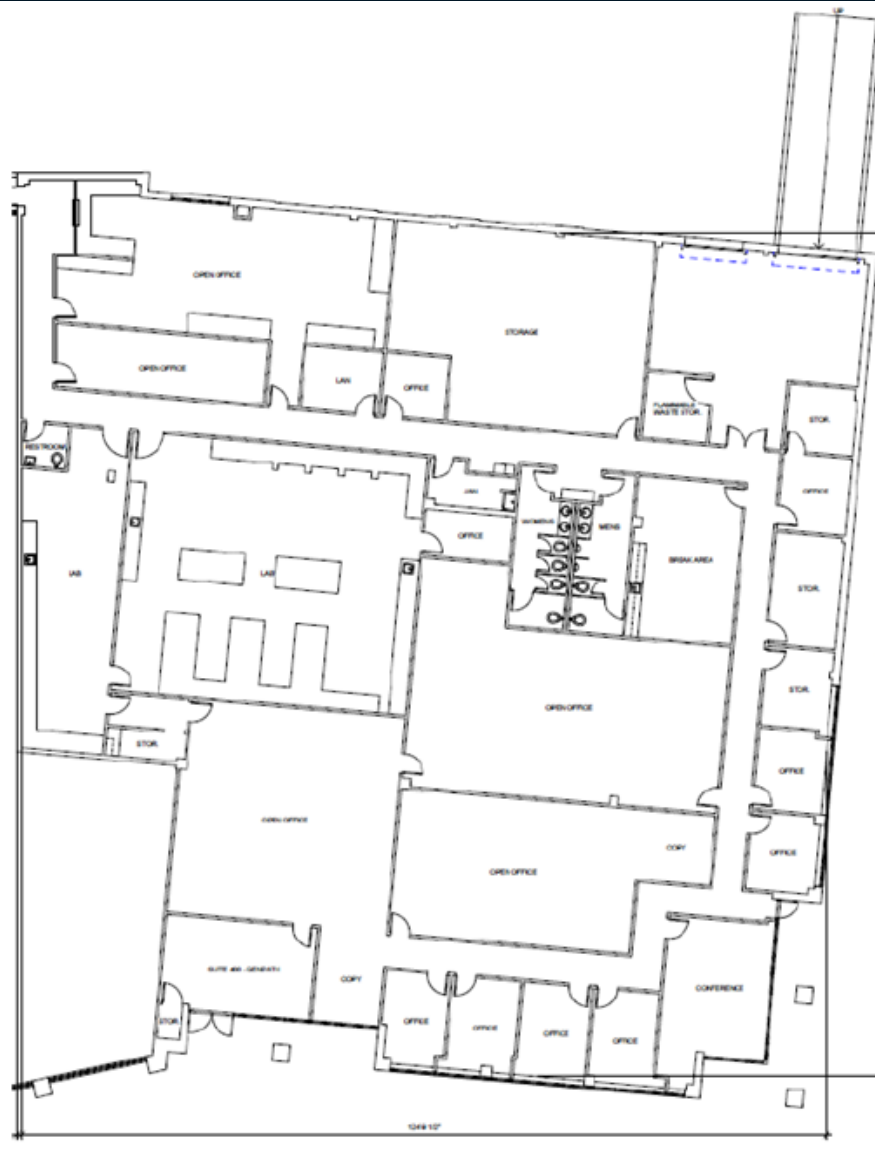
Lauren Lang
Vice President
Lauren.Lang@jll.com
+1 (703) 508-9013

Bernie McCarthy
Executive Managing Director
Bernie.McCarthy@jll.com
+1 (301) 287-3263

Morgan Sullivan
Executive Managing Director
Morgan.Sullivan@jll.com
+1 (301) 287-9924

For lease

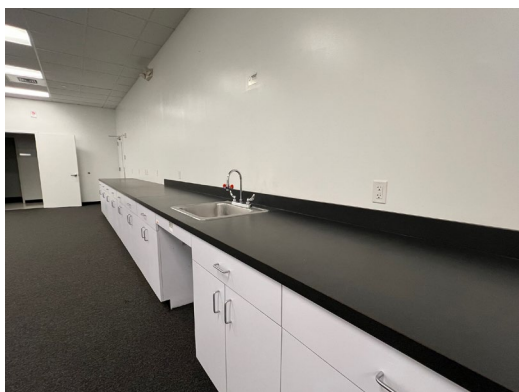
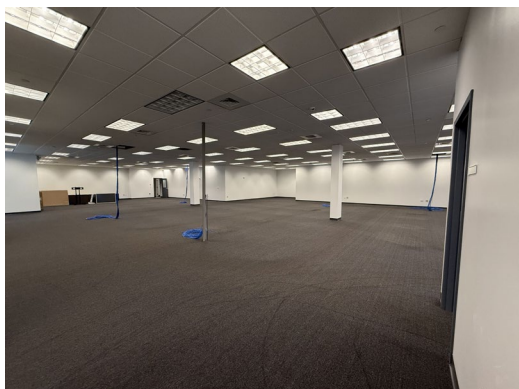
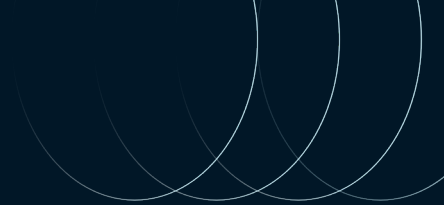
Floor Plan



Lauren Lang
Vice President
Lauren.Lang@jll.com
+1 (703) 508-9013

Bernie McCarthy
Executive Managing Director
Bernie.McCarthy@jll.com
+1 (301) 287-3263

Morgan Sullivan
Executive Managing Director
Morgan.Sullivan@jll.com
+1 (301) 287-9924



Lauren Lang
Vice President
Lauren.Lang@jll.com
+1 (703) 508-9013

Bernie McCarthy
Executive Managing Director
Bernie.McCarthy@jll.com
+1 (301) 287-3263

Morgan Sullivan
Executive Managing Director
Morgan.Sullivan@jll.com
+1 (301) 287-9924

Contact Info:

Lauren Lang

Vice President

Lauren.Lang@jll.com

+1 (703) 508-9013

Bernie McCarthy

Executive Managing Director

Bernie.McCarthy@jll.com

+1 (301) 287-3263

Morgan Sullivan

Executive Managing Director

Morgan.Sullivan@jll.com

+1 (301) 287-9924