

\$450,000

Spacious Commercial Victorian

One of Eureka's Original Storefronts

1480 Myrtle Ave Eureka CA 95501

Built in 1879, this Property Now Boasts 2 Commercial Units Below with a Single Family Residence Above. Many Original Details and Elaborately Molded Trim Adorn the Exterior Along with a Charming Cantilevered Square Bay, Reminiscent of the Eastlake Victorian Style. Zoned Neighborhood Commercial and Principally Permitted for a Wide Variety of Uses, This is A Unique Opportunity to Envision the Possibilities. With Newly Developing Housing Units Nearby, This is a Growing Market with Excellent Potential. Must Schedule to View.

Property Details

- 3950 Total Sq Ft
- Zoned Single Family, Commercial, Neighborhood Commercial
- Corner Lot
- Built 1879



Listed By:
Annalise von Borstel

Broker Owner DRE 02020546

707-616-2548

Annalise@HyperionHumboldt.com



Hyperion Humboldt Realty, Inc.



"Helping You Root And Rise"

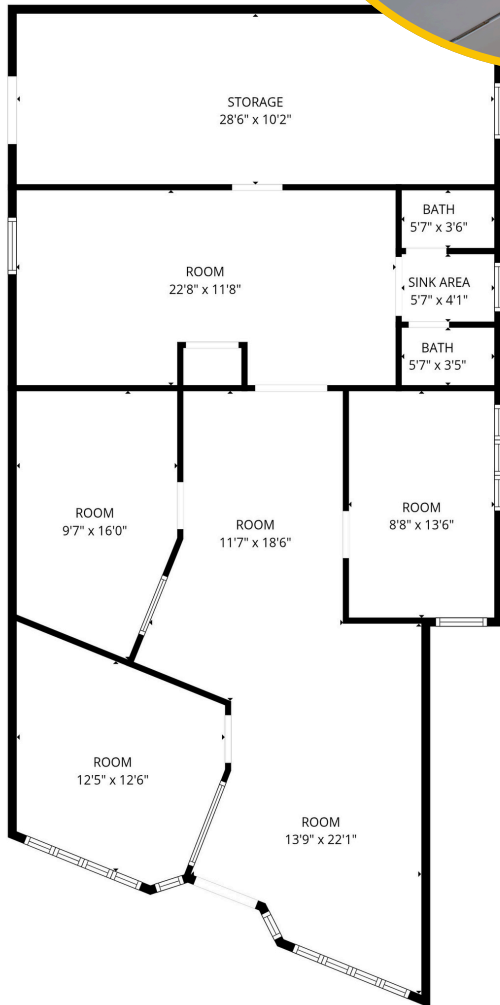
HyperionHumboldt.com
427, F Steet, Suite 213,
Eureka, CA 95501

\$450,000

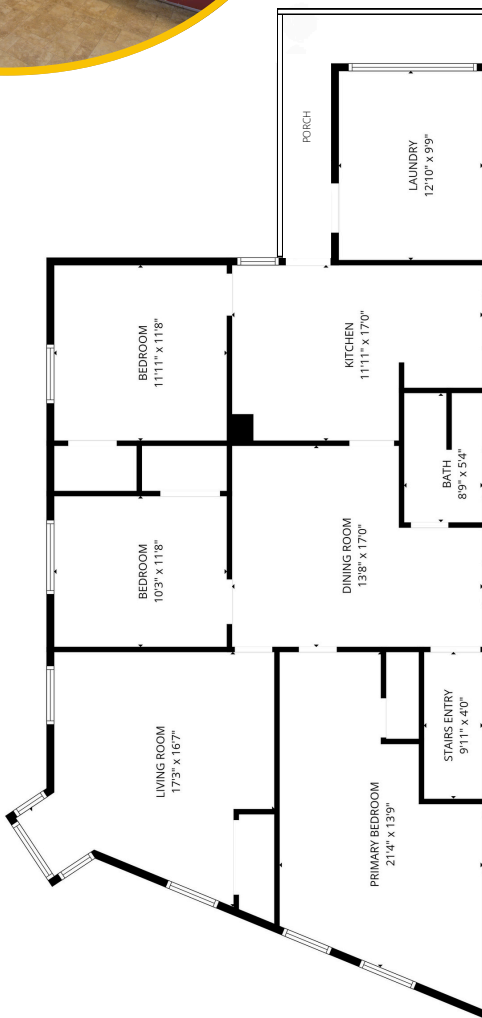
Spacious Commercial Victorian

One of Eureka's Original Storefronts

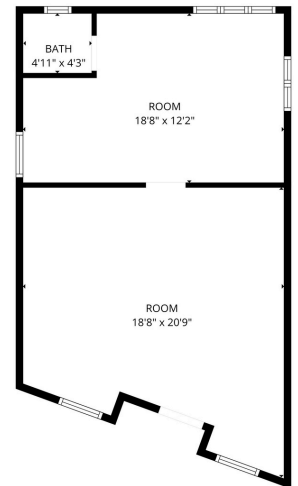
1480 Myrtle Ave Eureka CA 95501



Suite A, Downstairs



Suite B, Downstairs



1458 Myrtle Ave



Listed By:
Annalise von Borstel

Broker Owner DRE 02020546

707-616-2548

Annalise@HyperionHumboldt.com



Hyperion Humboldt Realty, Inc.



"Helping You Root And Rise"

HyperionHumboldt.com

427, F Steet, Suite 213,

Eureka, CA 95501