

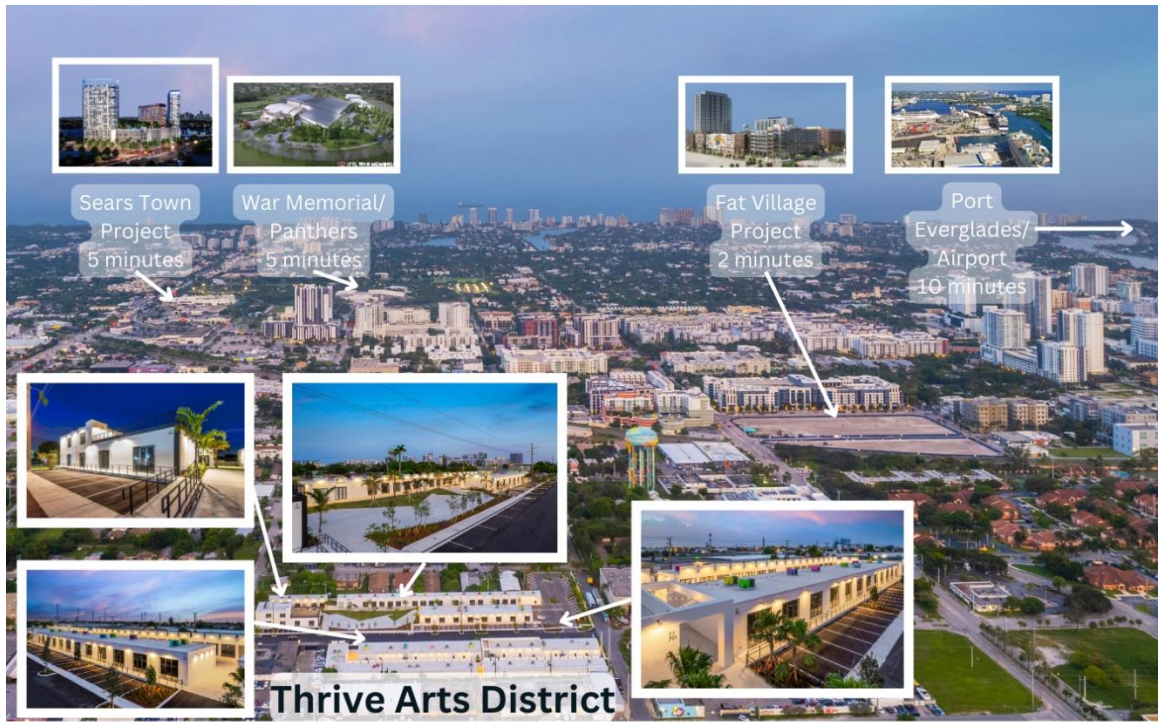


SELLSTATE
360 REALTY

PRESENTS

THRIVE

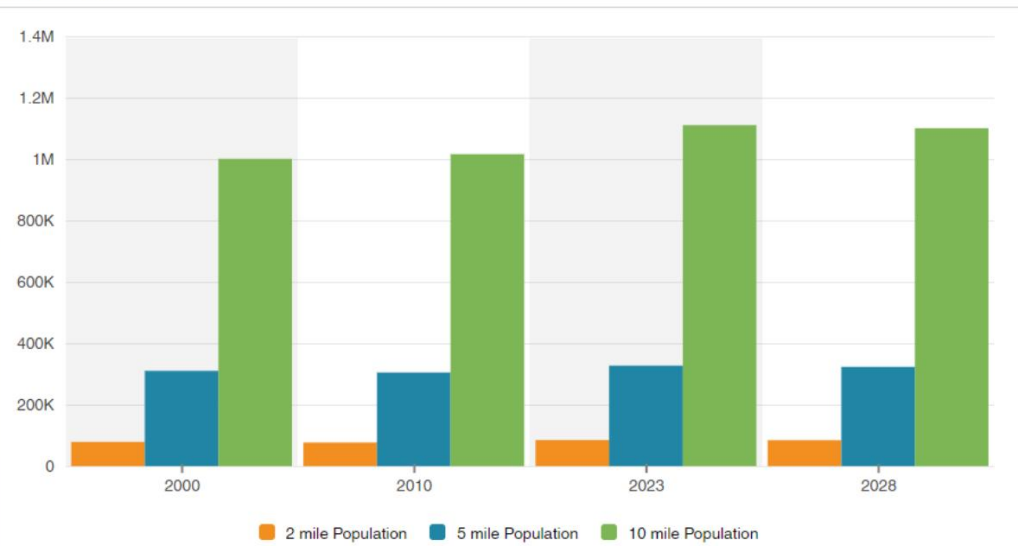
ARTS AND
ENTERTAINMENT
DISTRICT



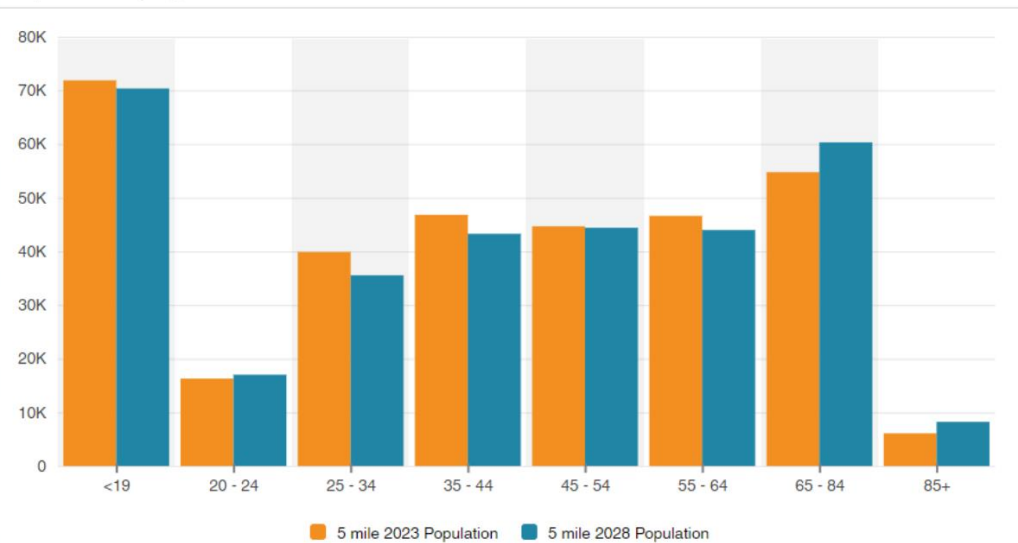
Population

	2 mile	5 mile	10 mile
2010 Population	76,656	304,833	1,015,930
2023 Population	84,982	327,034	1,110,371
2028 Population Projection	84,413	323,115	1,100,337
Annual Growth 2010-2023	0.8%	0.6%	0.7%
Annual Growth 2023-2028	-0.1%	-0.2%	-0.2%
Median Age	42.1	42.6	42.4
Bachelor's Degree or Higher	35%	29%	28%
U.S. Armed Forces	26	154	390

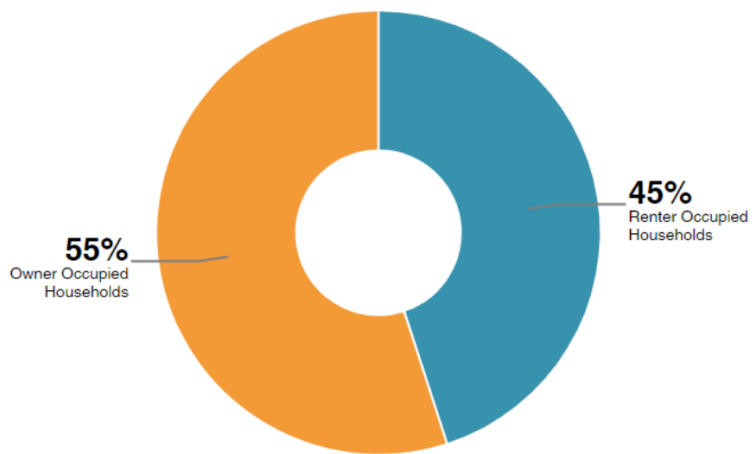
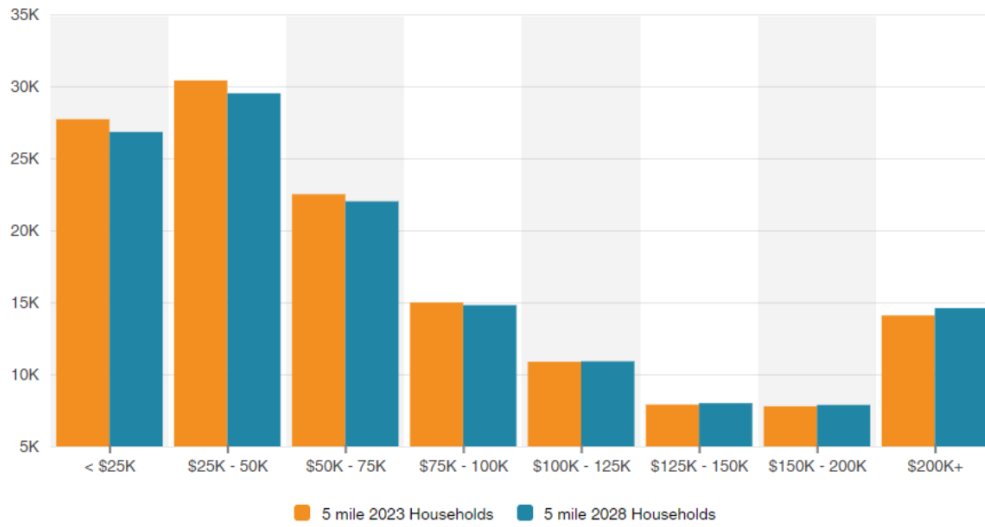
Population



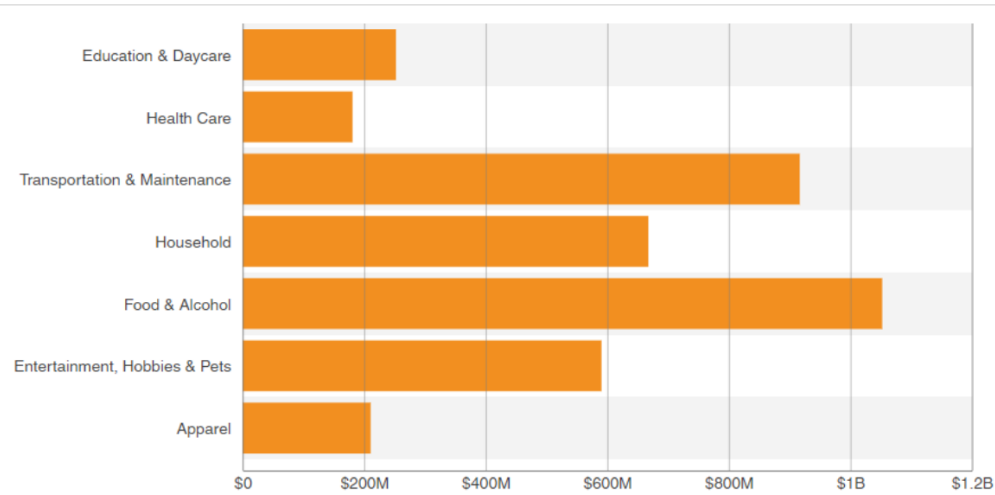
Population By Age

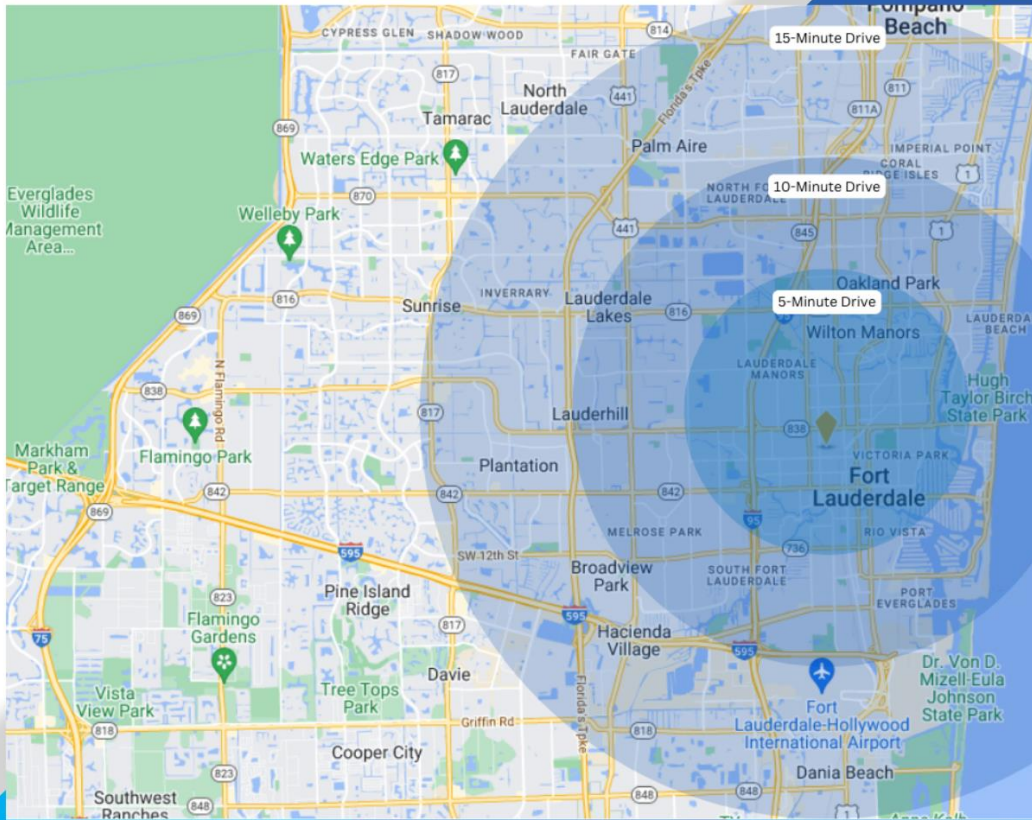


Household Income



Consumer Spending





Location | Distance | Travel Time

Ft. Lauderdale Beach	3.1 Miles	7 Minutes
Downtown Ft. Lauderdale	1.3 Miles	4 Minutes
Las Olas Blvd	1.0 Miles	4 Minutes
Ft. Lauderdale Airport	4.2 Miles	12 Minutes
Port Everglades	3.6 Miles	12 Minutes
Pompano Beach	6.9 Miles	15 Minutes
West Palm Beach	41 Miles	48 Minutes
Miami Beach	31 Miles	38 Minutes



Robert Ernst, Broker 954-732-1359

