



Colliers

SUBLEASE AVAILABLE

10000 NW 17th Street

Doral, FL 33172

Sublease
available through
June 30, 2028

26,290

Total SF

\$19.50

PSF NNN

+ **\$5.16** PSF OpEx
(estimated)

Building Highlights



Institutionally
Owned



±24' Clear Ceiling
Height



±40' X ±41'
Column Spacing



170' Shared
Truck Court

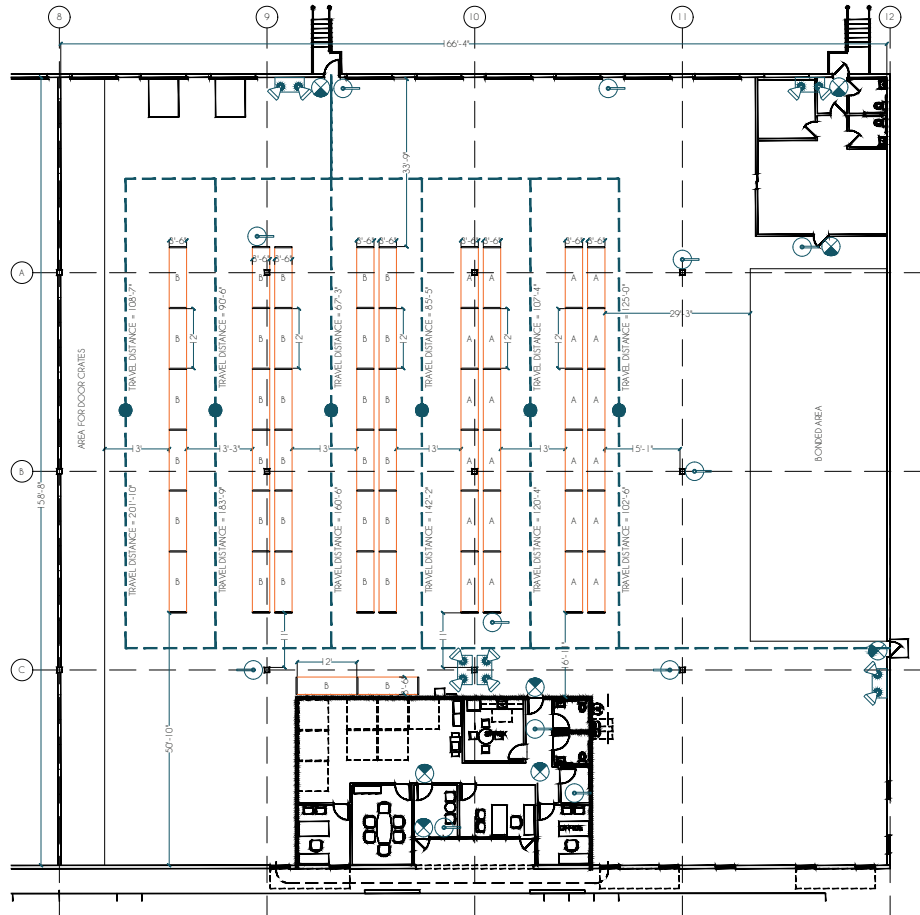


160' Building
Depth



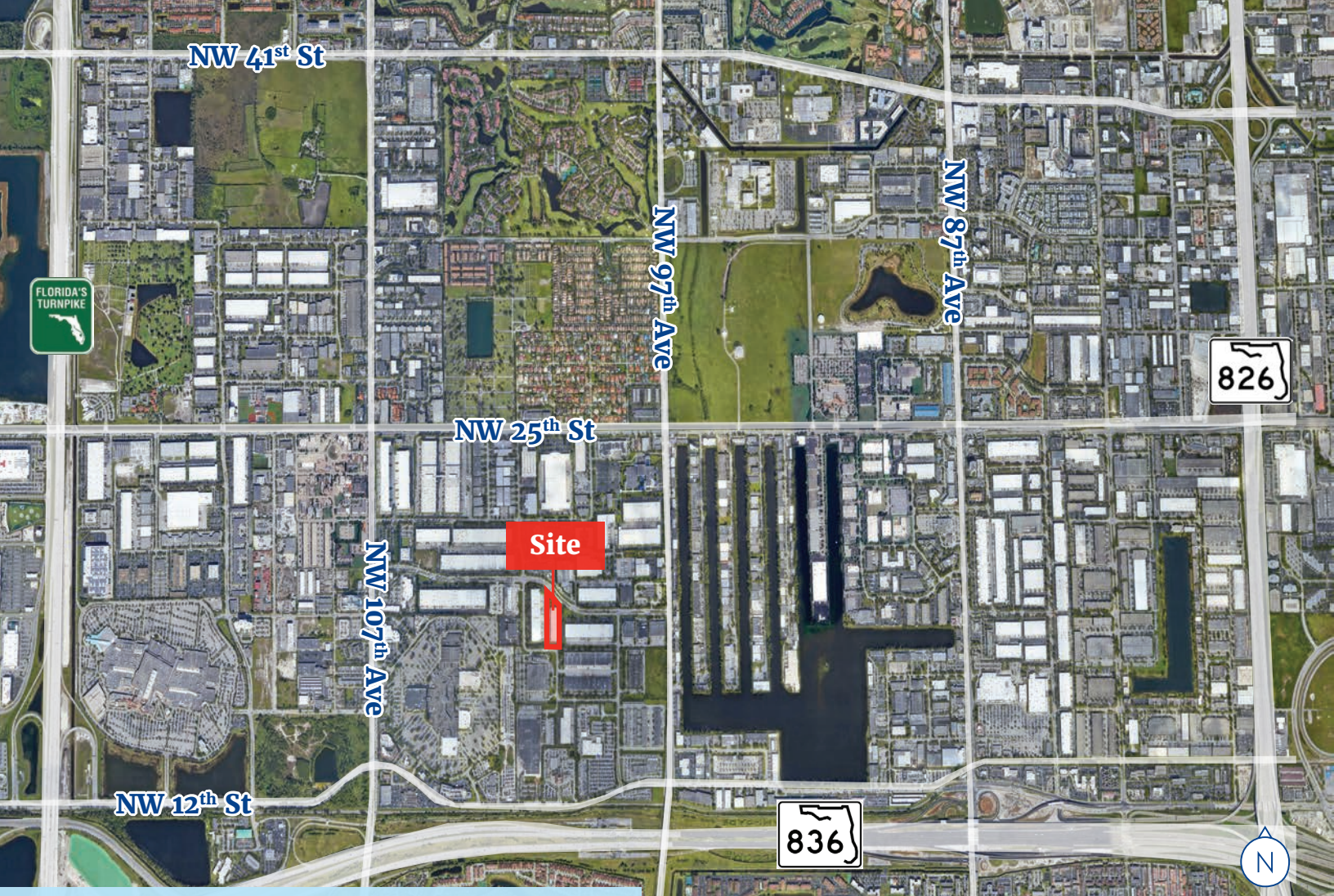
9 Dock Height
Doors with 3 Pit
Levelers & 1 Ramp

Floor Plan



Specifications

Total Available	±26,290 SF
Office Size	±1,800 SF Modern Office (plus ±600 SF office at loading dock)
Loading	9 Dock Height Doors with 3 Pit Levelers and 1 Ramp
Power	480a/277v 3p
Sprinklered	Yes
Parking	106 Surface Spaces; Ratio 1.20/1,000 SF
Accessibility	Excellent access to 826, 836 & Florida's Turnpike
Racking	Available



Demographics



2023 population
(5 mi radius)

366,963



2023 Households
(5 mi radius)

124,580



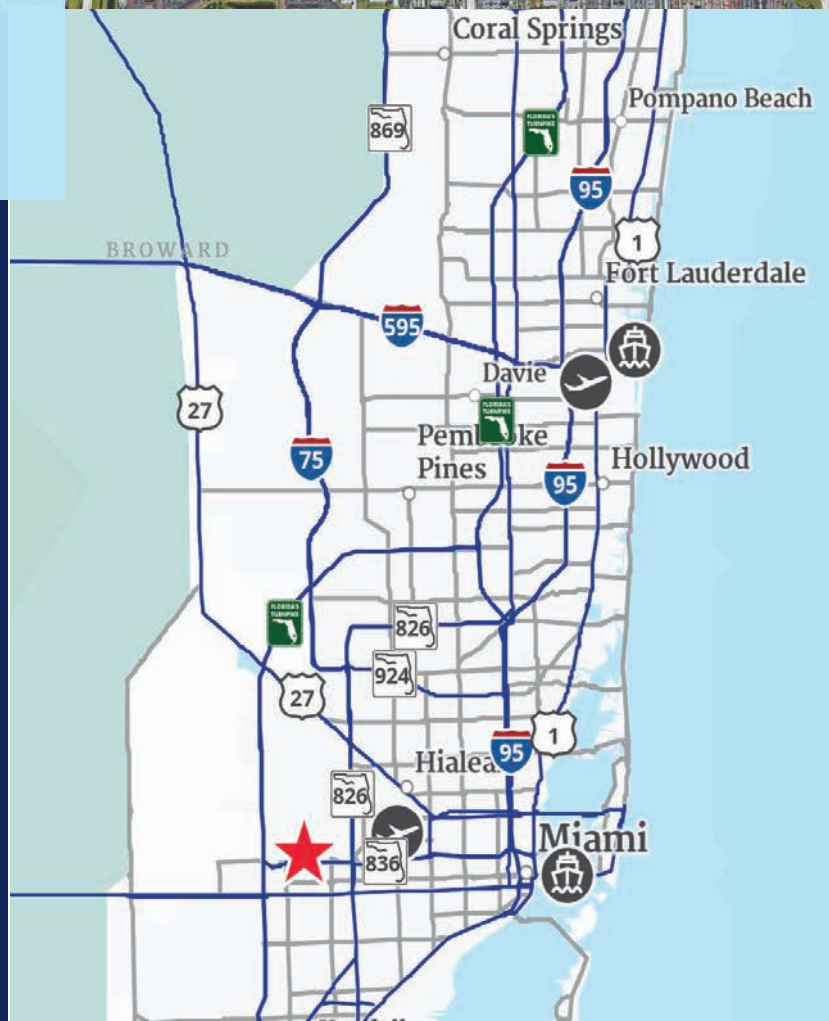
to MIA Cargo
Entrance

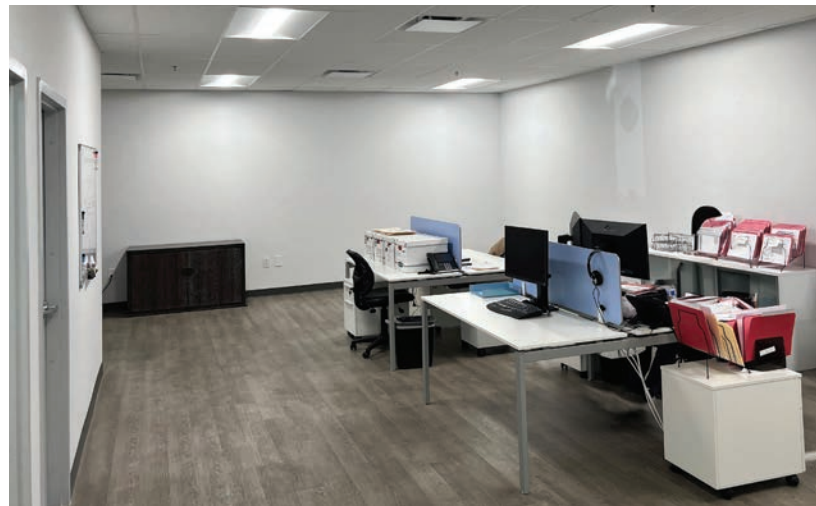
5.2 mi



to Port
Miami

14 mi





Contact us:

Sal Bonsignore, SIOR, CCIM
Senior Vice President
+1 954 816 8899
sal.bonsignore@colliers.com



Colliers International
Florida, LLC
200 E Broward Boulevard
Suite 120
Fort Lauderdale, FL 33301
colliers.com

This document has been prepared by Colliers International for advertising and general information only. Colliers International makes no guarantees, representations or warranties of any kind, expressed or implied, regarding the information including, but not limited to, warranties of content, accuracy and reliability. Any interested party should undertake their own inquiries as to the accuracy of the information. Colliers International excludes unequivocally all inferred or implied terms, conditions and warranties arising out of this document and excludes all liability for loss and damages arising there from. This publication is the copyrighted property of Colliers International and/or its licensor(s). ©2024. All rights reserved. Commercial Real Estate Services.