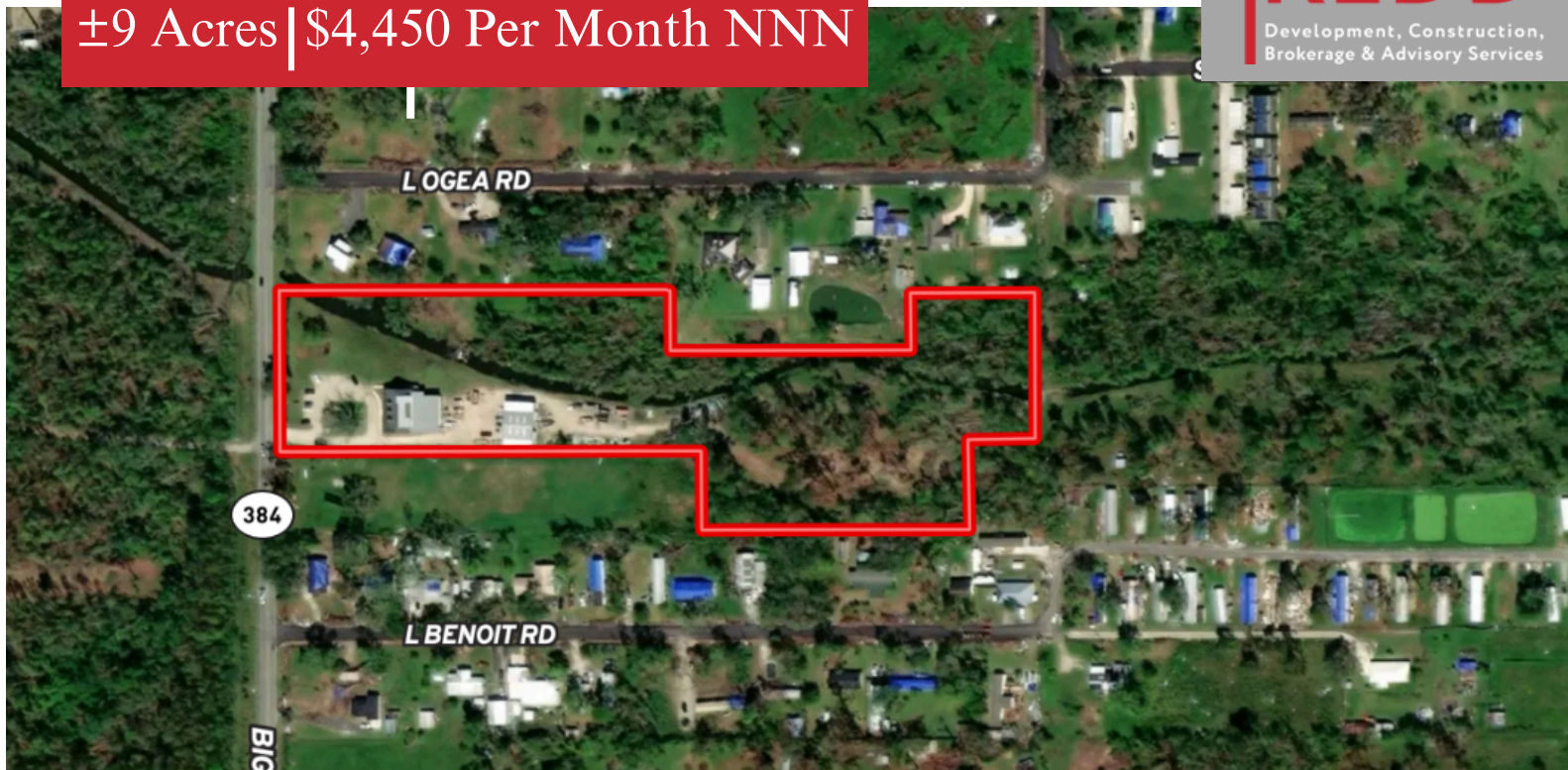


Available For Lease

±9 Acres | \$4,450 Per Month NNN

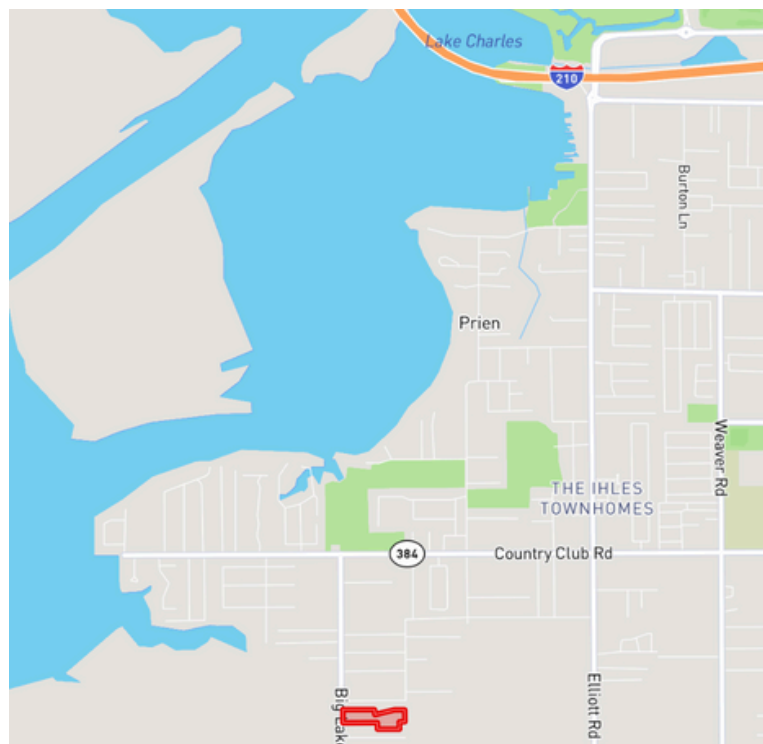


5393 Big Lake Road Unit A

Lake Charles, LA 70605

Property Highlights

- +/-9 acres
- AE flood zone
- +/-1,600 SF office space on Big Lake Road (floor plan attached, the hatched area is what is for lease)
- Office includes several office, a reception area, bathroom, kitchenette, and a large workspace with plenty of storage
- A +/-50x50 square foot industrial building with up to 10,000 SF of lay down yard, additional land can be negotiated
- Light Industrial Zoning



For more information

Matt Redd, CCIM, SIOR, CRE

O: 337 310 0605 C: 337 489 9666

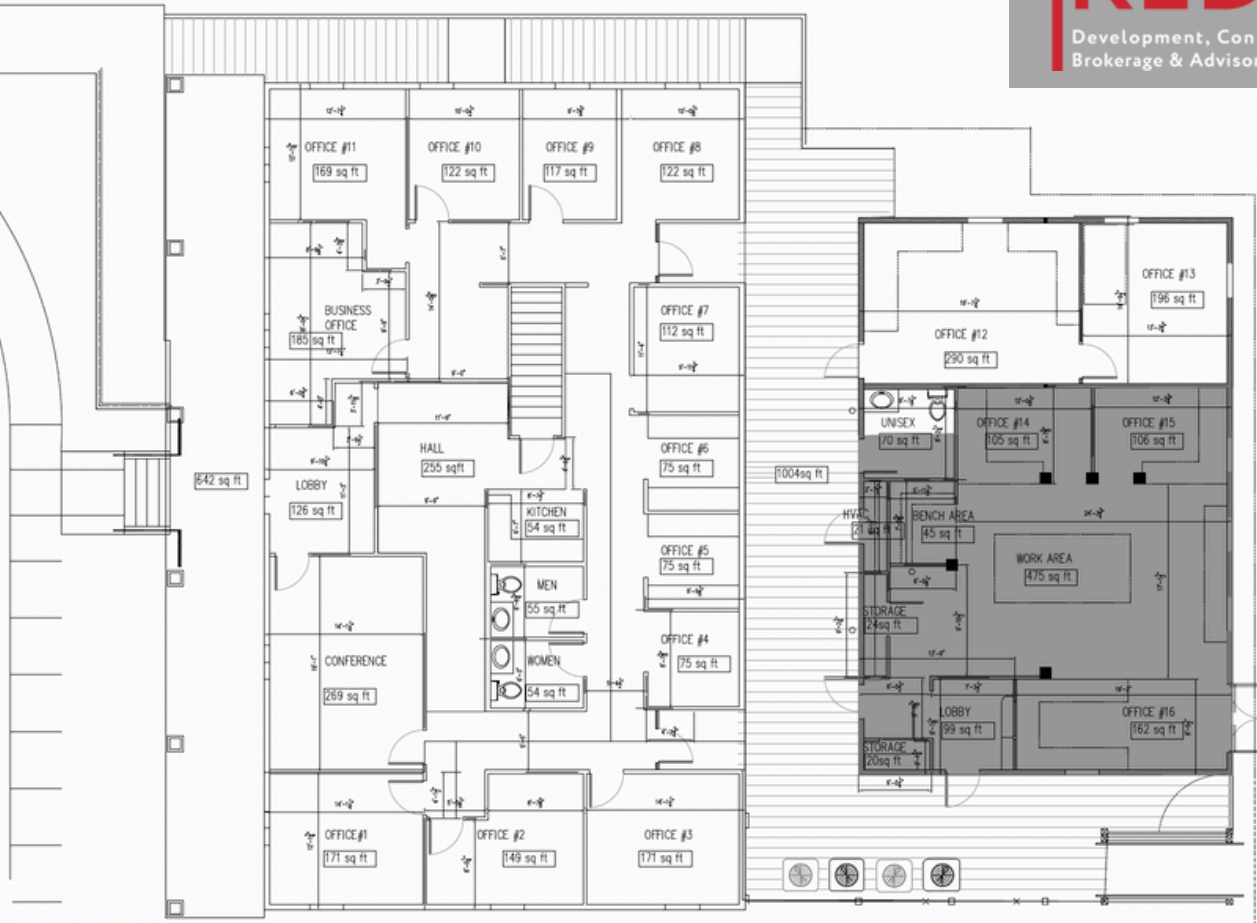
mattredd@reddproperties.com

**CALL OR EMAIL FOR MORE
INFORMATION**

NO WARRANTY OR REPRESENTATION, EXPRESS OR IMPLIED, IS MADE AS TO THE ACCURACY OF THE INFORMATION CONTAINED HEREIN, AND THE SAME IS SUBMITTED SUBJECT TO ERRORS, OMISSIONS, CHANGE OF PRICE, RENTAL OR OTHER CONDITIONS, PRIOR SALE, LEASE OR FINANCING, OR WITHDRAWAL WITHOUT NOTICE, AND OF ANY SPECIAL LISTING CONDITIONS IMPOSED BY OUR PRINCIPALS NO WARRANTIES OR REPRESENTATIONS ARE MADE AS TO THE CONDITION OF THE PROPERTY OR ANY HAZARDS CONTAINED THEREIN ARE ANY TO BE IMPLIED. LICENSED IN LOUISIANA.

1424 Ryan Street
Lake Charles, LA 70601
337 310 0605
reddproperties.com

Floor Plan



FIRST FLOOR PLAN

For more information
Matt Redd, CCIM, SIOR, CRE
O: 337 310 0605 C: 337 489 9666
mattredd@reddproperties.com

NO WARRANTY OR REPRESENTATION, EXPRESS OR IMPLIED, IS MADE AS TO THE ACCURACY OF THE INFORMATION CONTAINED HEREIN, AND THE SAME IS SUBMITTED SUBJECT TO ERRORS, OMISSIONS, CHANGE OF PRICE, RENTAL OR OTHER CONDITIONS, PRIOR SALE, LEASE OR FINANCING, OR WITHDRAWAL WITHOUT NOTICE, AND OF ANY SPECIAL LISTING CONDITIONS IMPOSED BY OUR PRINCIPALS NO WARRANTIES OR REPRESENTATIONS ARE MADE AS TO THE CONDITION OF THE PROPERTY OR ANY HAZARDS CONTAINED THEREIN ARE ANY TO BE IMPLIED. LICENSED IN LOUISIANA.

1424 Ryan Street
Lake Charles, LA 70601
337 310 0605
reddproperties.com