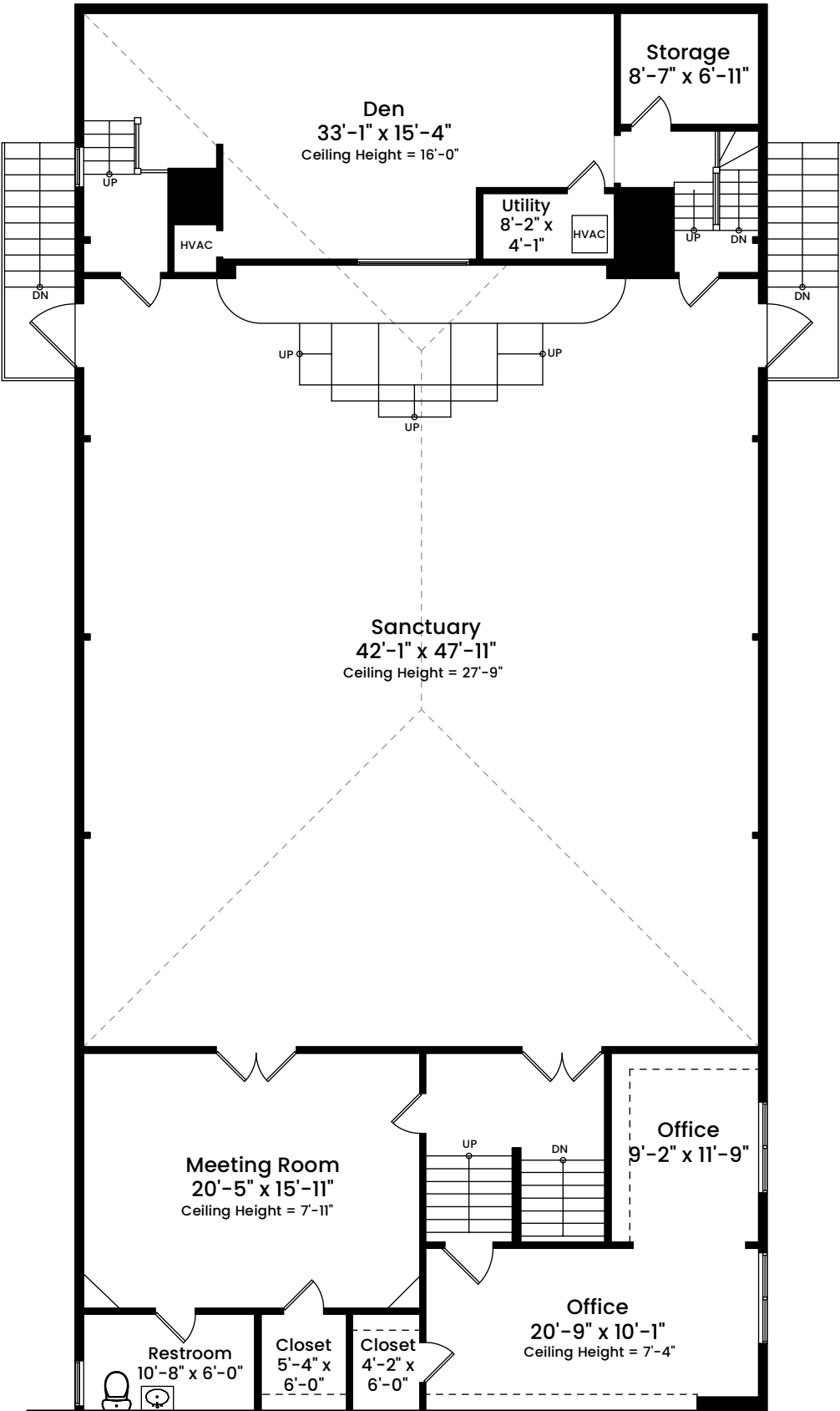


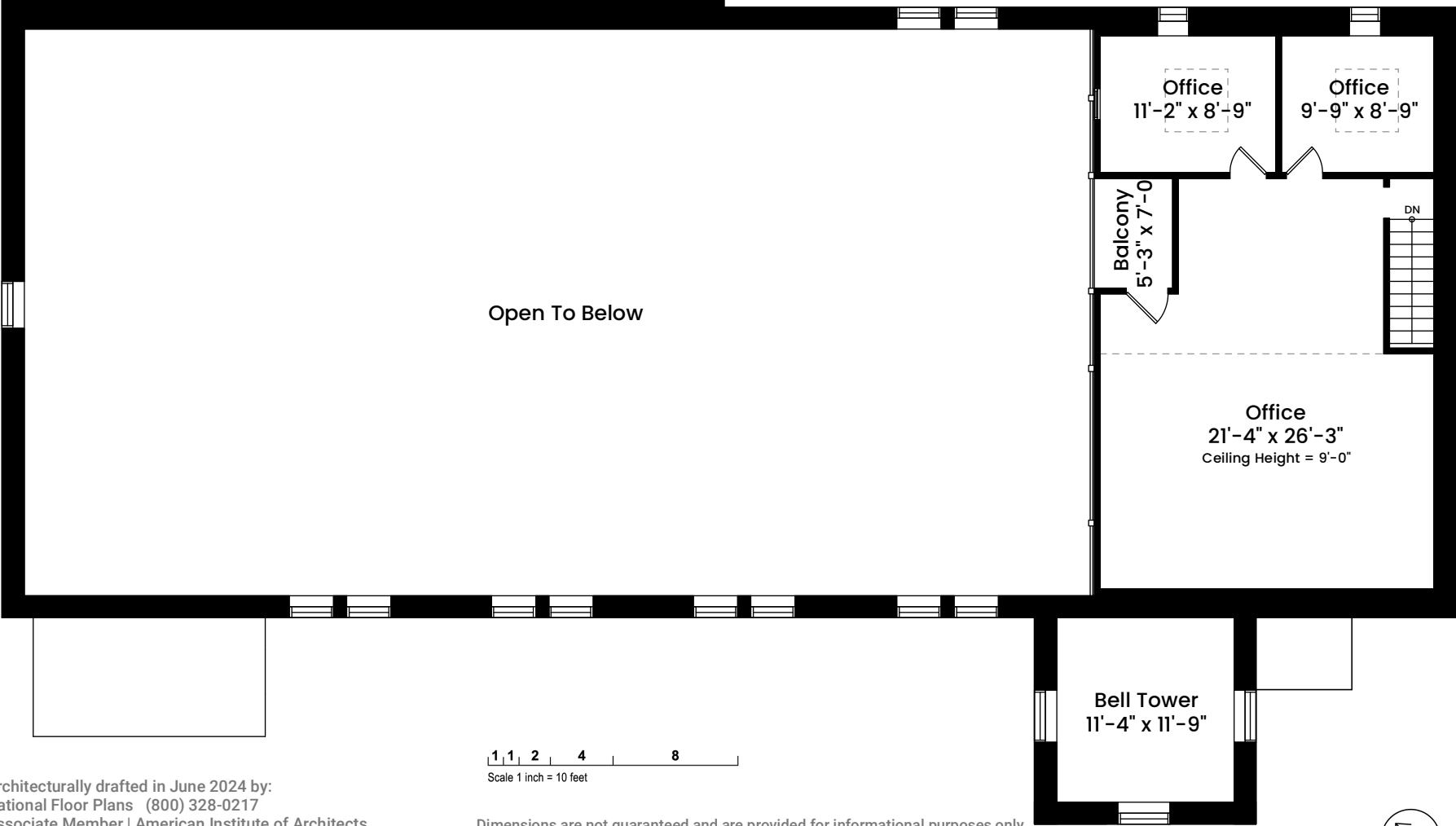
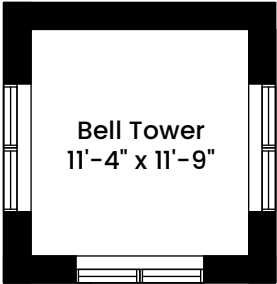
125 Highland Avenue | Somerville, MA 02143

SECOND FLOOR

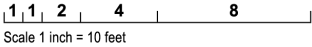
CEILING HEIGHT AS NOTED



THIRD FLOOR



Architecturally drafted in June 2024 by:  
National Floor Plans (800) 328-0217  
Associate Member | American Institute of Architects  
Contact [www.nationalfloorplans.com](http://www.nationalfloorplans.com) for .dwg AutoCAD files  
or square footage questions about this property.



Dimensions are not guaranteed and are provided for informational purposes only.  
Individual room dimensions are not used to calculate overall square footage.  
National Floor Plans follows ANSI guidelines for calculating square footage.

