



WWW.ATLANTICECO.COM
904-347-9133 | jody@atlanticeco.com
217 Galicia Avenue | St. Augustine, FL 32086

May 12, 2015

Mr. Ron Warren
c/o Mr. Will Russell
Endless Summer Realty
521 A1A Beach Blvd
St. Augustine, FL 32080

RE: 920 & 930 SR 16 Wetland &
Protected Species Assessment
St. Johns County, FL

Dear Mr. Warren,

Atlantic Ecological Services, LLC (AES) visited the 920 & 930 State Road (SR) 16 Property for the purposes of conducting a review for the presence of wetlands and protected species based on direct and indirect observations, as well as to determine the potential for occurrence of protected species based on suitable habitat. The site assessment was conducted on May 8, 2015. The 920 & 930 SR 16 Property, herein referred to as the subject property, is specifically located north of SR 16, east of residential properties, south of undeveloped land, and west of residential properties and Woodlawn Road in St. Johns County, Florida. The St. Johns County Parcel ID's are 0864100000 and 0864800000. The subject property is located in Section 3, Township 7 South, Range 29 East. Please see the attached Aerial and Topographic Maps. The subject property is approximately 2.90 acres and consists of two residential homes and undeveloped land.

METHODS

Habitat Mapping

Each community and land use area was categorized according to the Florida Department of Transportation's (FDOT) 1999 *Florida Land Use, Cover and Forms Classification System* (FLUCCS). The boundaries of each FLUCCS code were delineated based on vegetative composition, soil characteristics, topography, and aerial interpretation. See the Results Section below for a description of the habitats found.

Protected Species Review

Prior to visiting the site, a background literature search was conducted to compile a list of state and federally protected animal and plant species that could occur on-site. The three primary sources of literature reviewed include the Florida Fish and Wildlife Conservation Commission's (FWC) *Florida's Endangered Species, Threatened Species, And Species of Special Concern*, the United States Fish and Wildlife Service's (USFWS) Threatened and Endangered Species System (TESS) database, and the Florida Department of Agriculture and Consumer Services (FDACS), Division of Plant Industry's (DPI) *Notes on Florida's Endangered and Threatened Plants*. Additional information was gathered from the Florida Natural Areas Inventory (FNAI) *Field Guides to the Rare Animals/Plants of Florida*, and the Florida Committee on Rare and Endangered Plants and Animals (FCREPA) *Rare and Endangered Biota of Florida: Volumes 1-5*, and the FWC's Eagle Nest Locator web site were also reviewed to obtain location data recorded by others for those species.

RESULTS

Habitats

Residential (FLUCCS 110) – The two parcels each have single family homes located on the subject property. The home at 930 SR 16 is vacant and the home at 920 SR 16 is occupied.

Temperate Hardwoods (FLUCCS 425) – The majority of the property consists of temperate hardwoods uplands. The canopy is closed and dominated by live oak (*Quercus virginiana*), laurel oak (*Quercus laurifolia*), sweet gum (*Liquidambar styraciflua*), cabbage palm (*Sabal palmetto*), red cedar (*Juniperus virginiana*), southern magnolia (*Magnolia grandiflora*), slash pine (*Pinus elliotii*), and pignut hickory (*Carya glabra*). The understory consists of saw palmetto (*Serenoa repens*), wild orange (*Citrus* spp.), cabbage palm, American beautyberry (*Callicarpa americana*), gallberry (*Ilex glabra*), sparkleberry (*Vaccinium arboreum*), yaupon holly (*Ilex vomitoria*) and wax myrtle (*Myrica cerifera*).

Wetland Forested Mixed (FLUCCS 630) – A small (approximately 0.30 acres), depressional wetland is found on the subject property. This wetland is an extension of the temperate hardwood community surrounding it, only with slightly lower natural ground elevation. The wetland is a closed canopy hardwood system, but does not have a single species that reaches the 66% dominance of the crown canopy composition. It is comprised primarily of laurel oak, red maple (*Acer rubrum*), water oak (*Quercus nigra*), sugarberry (*Celtis laevigata*), American elm (*Ulmus americana*), water hickory (*Carya aquatica*), cabbage palm, and dahoon holly (*Ilex cassine*). The wetland understory is consistent with the upland temperate hardwoods except for the dominance of lizard's tail (*Saururus cernuus*), chain fern (*Woodwardia virginica*), and royal fern (*Osmunda regalis*).

Wetlands and Surface Waters

A small (approximately 0.30 acre) isolated, depressional wetland is located on the subject property. AES delineated and flagged the extent of the wetland pursuant to Chapter 62-340

F.A.C. on May 8, 2015. The wetland is jurisdictional to the state (Florida Department of Environmental Protection/St. Johns River Water Management District) and St. Johns County. Due to its isolated state, it is not anticipated the wetland will be considered “*Waters of the State*” and jurisdictional to the U.S. Army Corps of Engineers. If future development plans propose any dredging or filling within the wetland a Statewide Environmental Resource Permit (SWERP) will be required. Due to the size of the wetland and limited function it provides to water quality and wildlife, no wetland mitigation should be required by the state regulatory agency. Any proposed wetland impacts would also have to be approved through the St. Johns County Development Review process prior to construction.

Wildlife Observations

Wildlife observations, both direct and indirect, were made throughout the course of the site investigation. A list of species observed is provided in the following table:

Table 1: Wildlife species observed on the 920 & 930 SR 16 property in St. Johns County, Florida.

Taxon	Common Name	Scientific Name	Protected*
Reptiles			
	Green anole	<i>Anolis carolinensis</i>	No
Birds			
	Common grackle	<i>Quiscalus major</i>	No
	American crow	<i>Corvus brachyrhynchos</i>	No
	Northern mockingbird	<i>Mimus polyglottos</i>	No
	Mourning dove	<i>Zenaida macroura</i>	No
Mammals			
	Grey squirrel	<i>Sciurus carolinensis</i>	No
	Nine-banded armadillo	<i>Dasypus novemcinctus</i>	No

Protected Species

The subject property exists as 2 separate single family residential parcels which have been utilized for this use for many years. The location of the subject property (adjacent to a busy highway and surrounded by development) provides for minimal wildlife support. During the site reconnaissance no signs of protected species or potential for occurrence was identified.

The FWC’s Eagle Nest Locator website was queried for data regarding documented southern bald eagle (*Haliaeetus l. leucocephalus*) nests in the project vicinity. The southern bald eagle is protected under the Bald and Golden Eagle Protection Act. The closest bald eagle nest is located approximately 1.75 miles to the southeast of the subject property.

No other protected flora or fauna species are expected to inhabit the subject property.

CONCLUSION

Atlantic Ecological Services, LLC conducted a site review on the 920 & 930 State Road (SR) 16 Property for the purposes of determining the presence of wetlands and/or potential presence of state and federally protected wildlife and plant species.

The subject property consists of two single family residential homes and undeveloped land located north of SR 16, east of residential properties, south of undeveloped land, and west of residential properties and Woodlawn Road in St. Johns County, Florida.

The subject property is approximately 2.90 acres and consists of temperate hardwood uplands and wetland forested mixed habitat communities. The wetland delineated on the subject property is approximately 0.30 acres and is isolated from other wetlands or surface waters. The habitat is consistent with the uplands around it, only found at a slightly lower elevation and therefore a change to wetland classified plants and hydric soil.

The wetland is jurisdictional to the state (regulated by the Florida Department of Environmental Protection and/or the St. Johns River Water Management District) and St. Johns County. If future development of the property proposes wetland impacts then a Statewide Environmental Resource Permit through the appropriate state agency would be required and approval by the St. Johns County Development Review team prior to construction. Due to the size and limited water quality and wildlife functions of the wetland, it is not anticipated any wetland mitigation would be required.

No protected flora or fauna species are expected to inhabit the subject property.

Sincerely,



Jody N. Sisk
Senior Ecologist

Enclosures

Technical Literature References

Chafin, L.G. 2000. *Field Guide to the Rare Animals of Florida*. Florida Natural Areas Inventory, Tallahassee, Florida.

Coile, Nancy C. 1998. *Notes of Florida's Endangered and Threatened Plants*. (Rule 5B-40 Florida's Regulated Plant Index), Botany Contribution 38, 2nd Ed. Florida Department of Agriculture and Consumer Services, Division of Plant Industry, Gainesville, Florida. 119 pp.

Cox, Jeffrey. A. 1987 *Status and Distribution of the Florida Scrub-Jay*. Florida Ornithological Society. Special Publication No. 3, Gainesville, Florida 110 pp.

Cox, James, D. Inkley, R. Kautz. 1987. *Ecology and Habitat Protection Needs of Gopher Tortoise (Gopherus polyphemus) Populations Found on Lands Slated for Large-Scale Development in Florida*. Florida Game and Freshwater Fish Commission, Nongame Wildlife Program. Technical Report No. 4. Tallahassee, Florida. 69 pp.

Deyrup, Mark, Franz, Richard 1994. *Rare and Endangered Biota of Florida, Volume IV Invertebrates*. Special Committee on Invertebrates, Florida Committee on Rare and Endangered Plants and Animals.

Division of Endangered Species. *Threatened and Endangered Species System*. Web Page Address: http://ecos.fws.gov/tess_public/TESSWebpage. United States Fish and Wildlife Service, Denver, Colorado.

Environmental Laboratory, Wetlands Research Program. 1987. *Corps of Engineers Wetlands Delineation Manual*. Technical Report Y-87-1. Department of the Army, Vicksburg, Mississippi.

Florida Fish and Wildlife Conservation Commission. 2004. *Florida's Endangered Species, Threatened Species, and Species of Special Concern*. Web Page Address: <http://www.wildflorida.org/imperiled/pdf/Endangered-Threatened-Special-Concern-2004.pdf>. Florida Fish and Wildlife Conservation Commission.

Gilbert, Carter R., 1992. *Rare and Endangered Biota of Florida, Volume II Fishes*. Special Committee on Fishes, Florida Committee on Rare and Endangered Plants and Animals.

Gilbert, K.M., J.D. Tobe, R.W. Cantrell, M.E. Sweeley, J.R. Cooper. 1995. *The Florida Wetlands Delineation Manual*. Florida Department of Environmental Protection, South Florida Water Management District, St. Johns River Water Management District, Suwannee River Water Management District, Southwest Florida Water Management District, and Northwest Florida Water Management District. 198 pp.

Hipes, D. D.R. Jackson, K. NeSmith, D. Printiss, K. Brandt. 2001. *Field Guide to the Rare Animals of Florida*. Florida Natural Areas Inventory, Tallahassee, Florida.

Humphrey, Stephen R., 1992. *Rare and Endangered Biota of Florida, Volume I. Mammals*. Special Committee on Mammals, Florida Committee on Rare and Endangered Plants and Animals.

Moler, Paul E., 1992. *Rare and Endangered Biota of Florida, Volume III Amphibians and Reptiles*. Special Committee on Amphibians and Reptiles Florida Committee on Rare and Endangered Plants and Animals.

Natural Resource Conservation Service (Soil Conservation Service at time of publication). Circa 1977. *Soil Survey of Flagler County, Florida*. United States Department of Agriculture.

Rogers, James A. Jr., Kale, Herbert W. III, Smith, Henry T. 1996. *Rare and Endangered Biota of Florida Volume V. Birds*. Special Committee on Birds Florida Committee on Rare and Endangered Plants and Animals.

Surveying and Mapping Office, Thematic Mapping Section. Department of Transportation. 1999. *Florida Land Use, Cover and Forms Classification System* 3rd ed. State of Florida, Department of Administration. 81 pp.

Wunderlin, Richard P. 1998. *Guide to the Vascular Plants of Florida*. University Press of Florida. 804 pp.

Wunderlin, R. P., and B. F. Hansen. 2004. *Atlas of Florida Vascular Plants* (<http://www.plantatlas.usf.edu/>). [S. M. Landry and K. N. Campbell (application development), Florida Center for Community Design and Research.] Institute for Systematic Botany, University of South Florida, Tampa.

FIGURES

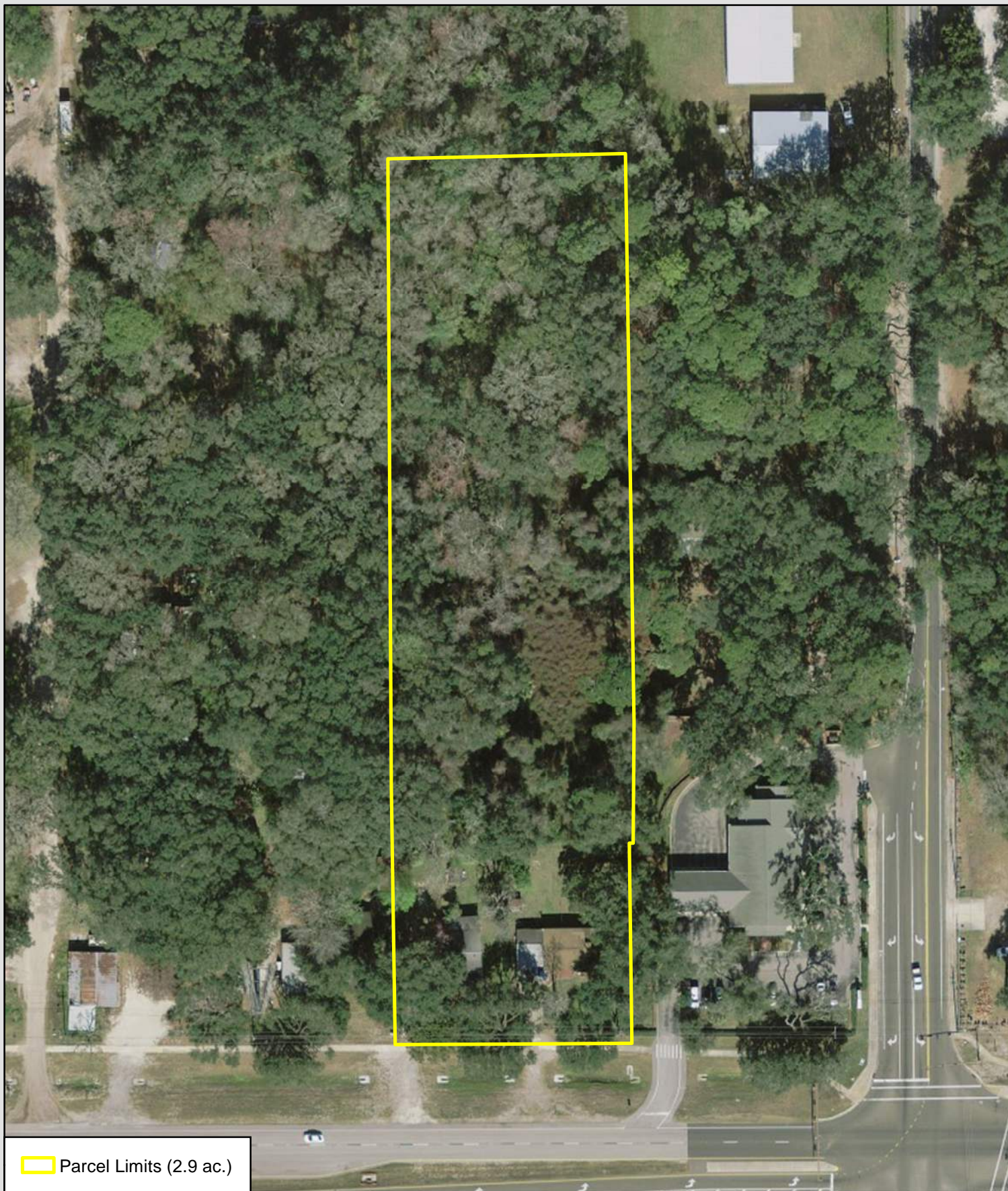


Image Source: ESRI 2013
Date: 5-5-15
Project: 15-029

0 50 100
Feet



Aerial Map
930 State Road 16
St. Johns County, Florida



WWW.ATLANTICECO.COM
904-347-9133 | jody@atlanticeco.com
217 Gallicia Ave | St. Augustine, FL 32086

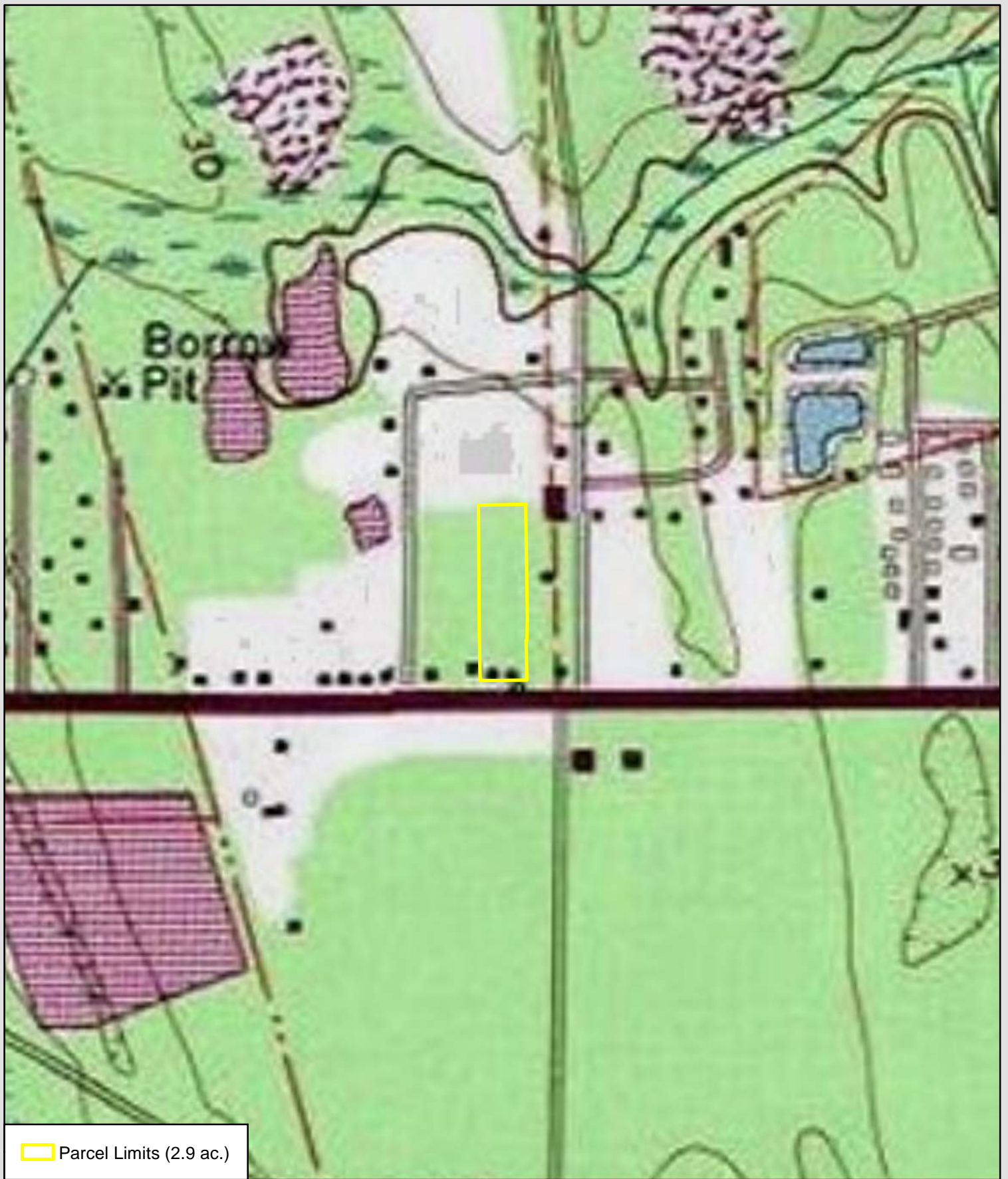


Image Source: ESRI 2015
Date: 5-5-15
Project: 15-029

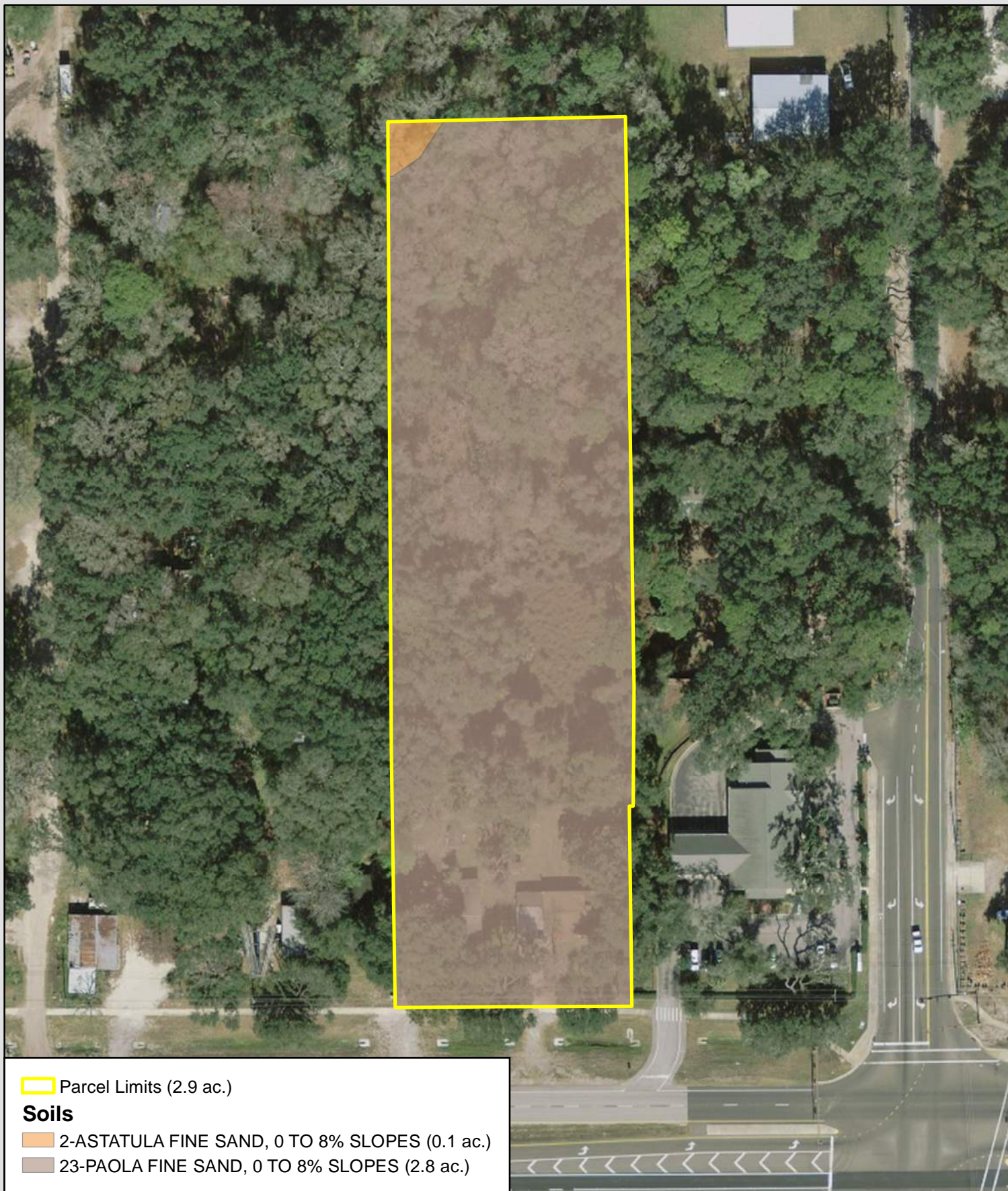
0 250 500
Feet



Topographic Map
930 State Road 16
St. Johns County, Florida



WWW.ATLANTICECO.COM
904-347-9133 | jody@atlanticeco.com
217 Gallicia Ave | St. Augustine, FL 32086



 Parcel Limits (2.9 ac.)

Soils

 2-ASTATULA FINE SAND, 0 TO 8% SLOPES (0.1 ac.)


 23-PAOLA FINE SAND, 0 TO 8% SLOPES (2.8 ac.)

Image Source: ESRI 2013

Date: 5-5-15

Project: 15-029

0 50 100
Feet



Soil Map 930 State Road 16 St. Johns County, Florida



WWW.ATLANTICECO.COM
904-347-9133 | jody@atlanticeco.com
217 Gallicia Ave | St. Augustine, FL 32086



Image Source: ESRI 2013
Date: 5-5-15
Project: 15-029

0 50 100
Feet



Habitat Map 930 State Road 16 St. Johns County, Florida



WWW.ATLANTICECO.COM
904-347-9133 | jody@atlanticeco.com
217 Gallicia Ave | St. Augustine, FL 32086



Parcel Limits (2.9 ac.)

Wetland

630- Wetland Mixed Forest (0.3 ac.)

Image Source: ESRI 2013
Date: 5-5-15
Project: 15-029

0 50 100
Feet



Wetland Map
930 State Road 16
St. Johns County, Florida



WWW.ATLANTICECO.COM
904-347-9133 | jody@atlanticeco.com
217 Gallicia Ave | St. Augustine, FL 32086