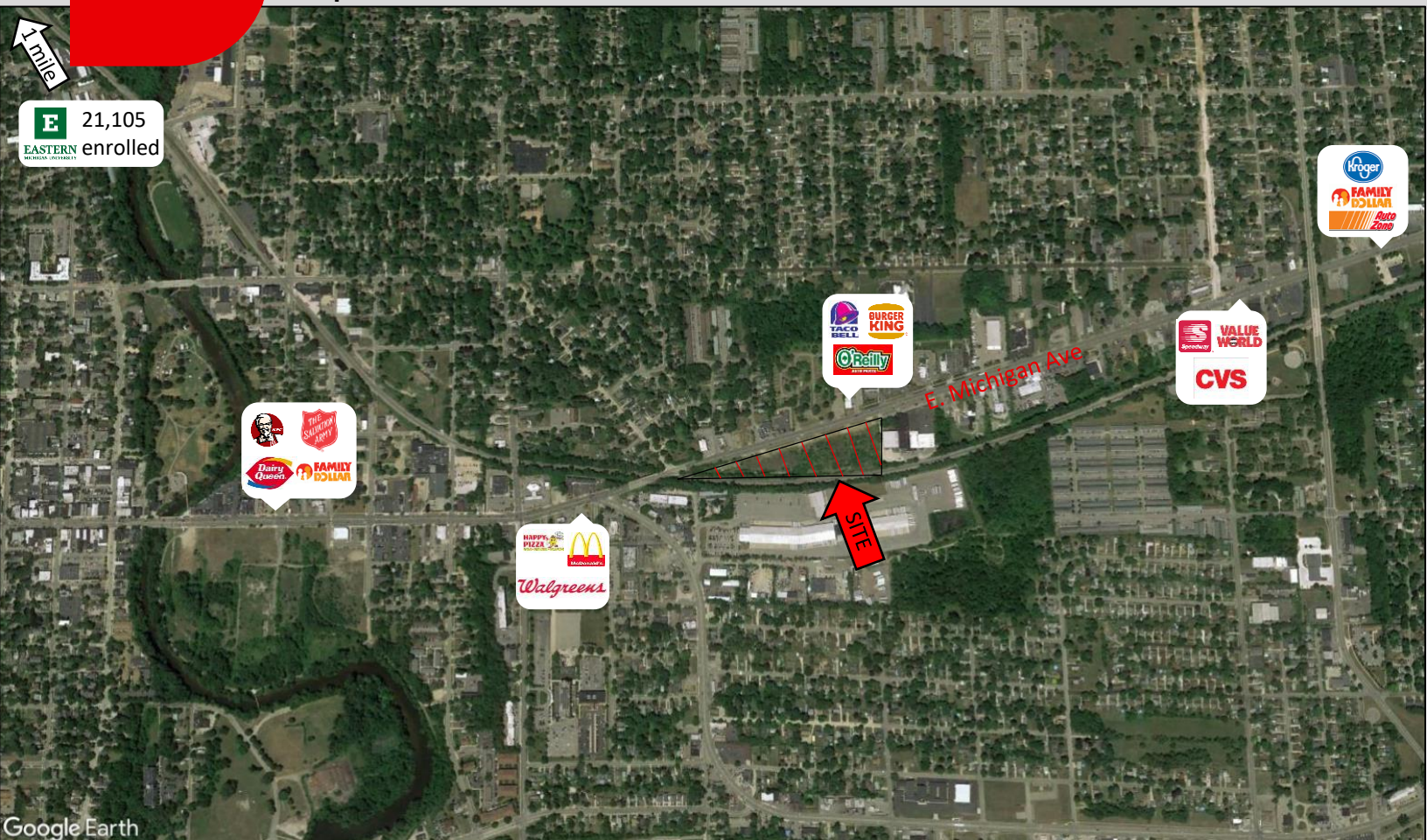


**COMING  
SOON**

# 950 E. Michigan Avenue

Ypsilanti, MI 48198



**Date Available:** Present  
**Zoning:** B-3 General Business  
**Lot Size:** 6.96 Acres  
**Frontage:** 1,535 ft on E. Michigan Ave (US - 12)

<b>DEMOGRAPHICS</b>	<b>1 MILE</b>	<b>3 MILES</b>	<b>5 MILES</b>
<b>Population:</b>	11,113	70,534	131,701
<b>Daytime Employee's:</b>	3,830	21,882	49,604

**SITE FEATURES:**

- The site features 4 curb cuts along E Michigan Avenue
- Highly visible site with over 15,000 VPD
- Located within 3 miles of downtown Ypsilanti and Eastern Michigan University
- Site has access to railroad tracks along property border

