

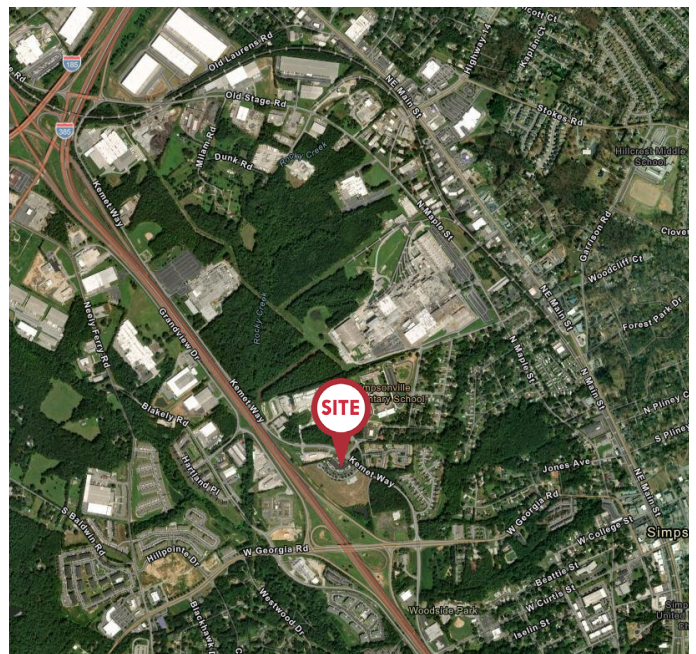


## 100-124 Allwood Court

Simpsonville, South Carolina 29681

### Property Features

- ±22,160 SF single story office building
- Great tenant mix
- Corporate Guaranteed lease in place for primary tenant
- The Seller is open to facilitating a lease termination for the space occupied by Proactive, MD to free up Suite 124 (12,463 SF) for an owner-occupier/general office use. Contact agent for details.
- Easy ingress and egress to office campus
- Plenty of on-site parking
- All suites are built out and in Class A condition
- High visibility from I-385
- Building is located in close proximity to residential, schools, W. Georgia Road, and more
- See separate brochure for additional land sites available for purchase
- Sale Price: \$5,950,000.00



### For more information:

**John Stathakis, II, CCIM**

864 232 9040 • [jstathakis@naief.com](mailto:jstathakis@naief.com)

**Scott Jones, SIOR**

864 232 9040 • [sjones@naief.com](mailto:sjones@naief.com)

**Chrestman Rainey**

864 569 2575 • [crainey@naief.com](mailto:crainey@naief.com)

NO WARRANTY OR REPRESENTATION, EXPRESS OR IMPLIED, IS MADE AS TO THE ACCURACY OF THE INFORMATION CONTAINED HEREIN, AND THE SAME IS SUBMITTED SUBJECT TO ERRORS, OMISSIONS, CHANGE OF PRICE, RENTAL OR OTHER CONDITIONS, PRIOR SALE, LEASE OR FINANCING, OR WITHDRAWAL WITHOUT NOTICE, AND OF ANY SPECIAL LISTING CONDITIONS IMPOSED BY OUR PRINCIPALS NO WARRANTIES OR REPRESENTATIONS ARE MADE AS TO THE CONDITION OF THE PROPERTY OR ANY HAZARDS CONTAINED THEREIN ARE ANY TO BE IMPLIED.

101 E. Washington Street, Suite 400

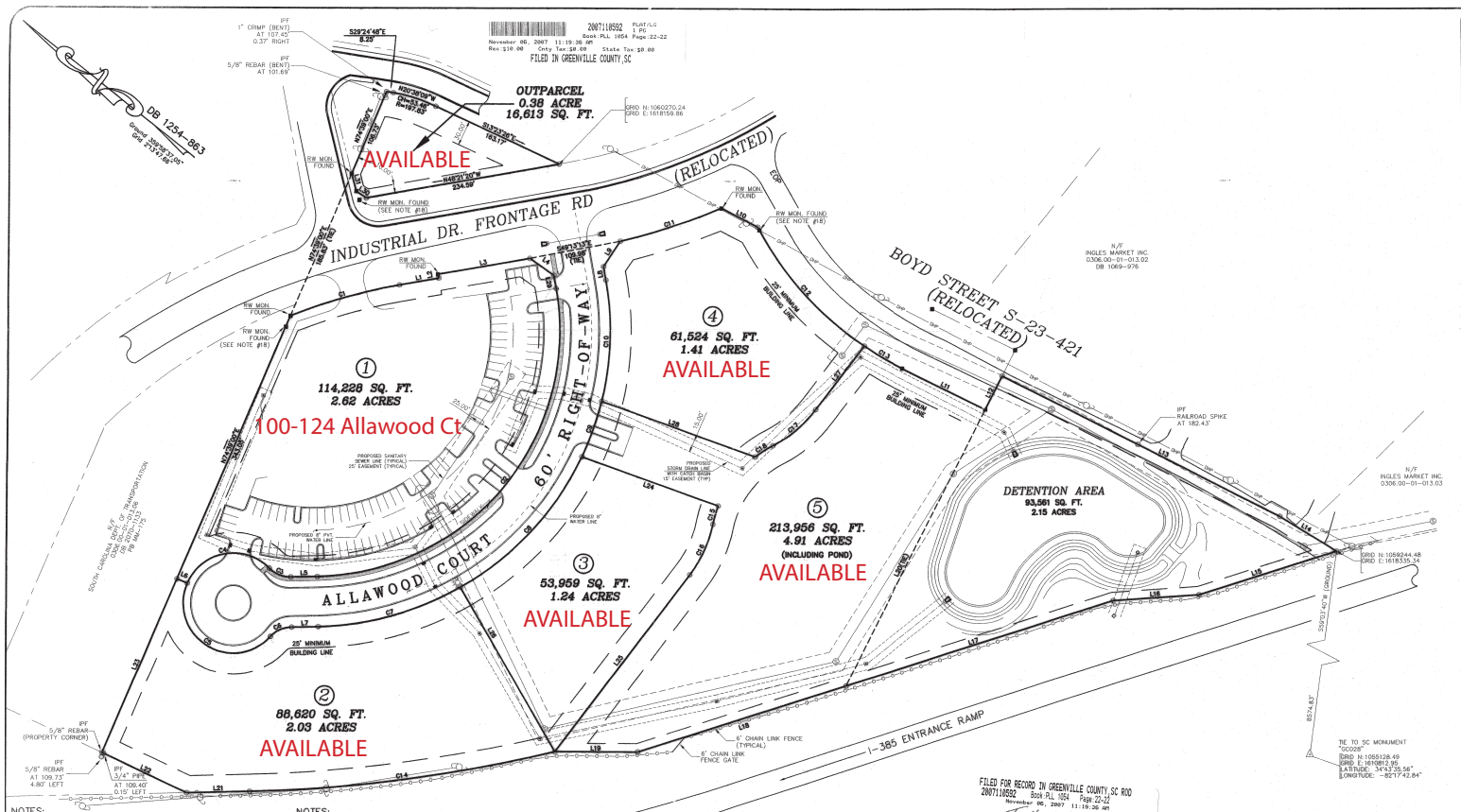
Greenville, SC 29601

864 232 9040

[naiearlefurman.com](http://naiearlefurman.com)

## Available Lots

# SURVEY



101 E. Washington Street, Suite 400  
Greenville, SC 29601  
864 232 9040  
[na.earlefurman.com](http://na.earlefurman.com)