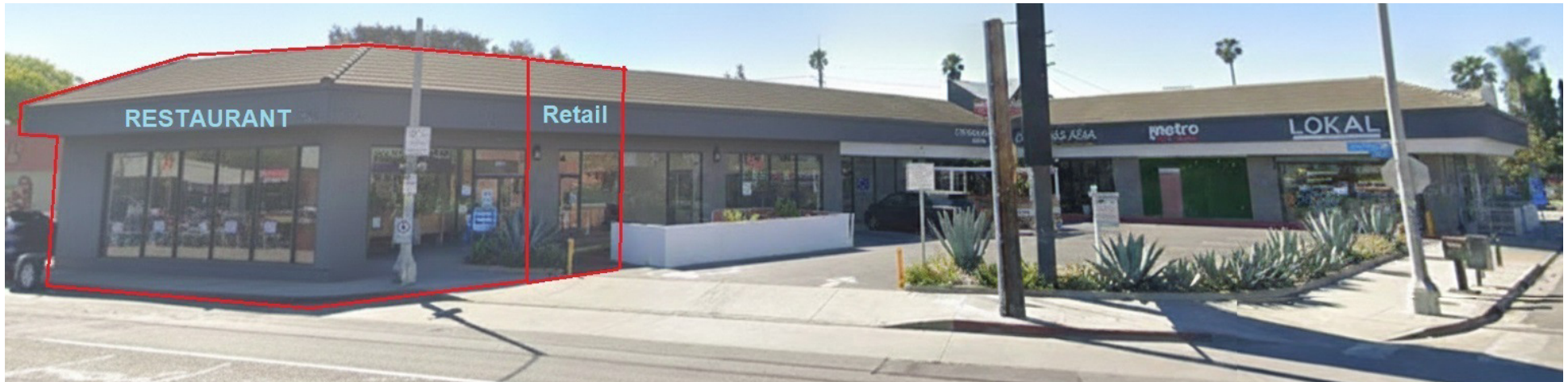


# RESTAURANT | RETAIL

715 LINCOLN BLVD

715 Lincoln Boulevard Los Angeles, CA 90291



## PROPERTY DESCRIPTION

Introducing an exceptional leasing opportunity at the prime location of 715 Lincoln Boulevard, Los Angeles. This impressive property boasts a 2nd Generation Restaurant space, offering a seamless transition for aspiring restaurateurs. With the convenience of approximately 39 on-site parking spaces, patrons will find easy access to the establishment. The property comes complete with a well-equipped kitchen infrastructure and hood, eliminating the need for key money investment. Positioned as a highly visible end cap location, this space presents an unparalleled opportunity for businesses to establish a prominent presence and attract a steady stream of foot traffic. Embrace the potential to realize your culinary vision in this coveted and well-equipped restaurant space.

## PROPERTY HIGHLIGHTS

- 2nd Generation Restaurant & Small Boutique Retail
- On-site parking (approx. 39 spaces)
- Delivered with hood and kitchen infrastructure (no key money)

**Dave Maldonado**  
(310) 442-1624  
CalDRE #01949738

## OFFERING SUMMARY

Lease Rate:	CALL BROKER FOR RATE
Number of Units:	2
Available SF:	600 - 1,918 SF
Building Size:	11,000 SF

DEMOGRAPHICS	0.3 MILES	0.5 MILES	1 MILE
Total Households	1,480	4,327	17,103
Total Population	3,474	9,561	34,643
Average HH Income	\$188,178	\$179,849	\$171,368



**COLDWELL BANKER**  
**COMMERCIAL**  
REALTY

# RESTAURANT | RETAIL

715 LINCOLN BLVD

715 Lincoln Boulevard Los Angeles, CA 90291



**Dave Maldonado**  
(310) 442-1624  
CalDRE #01949738



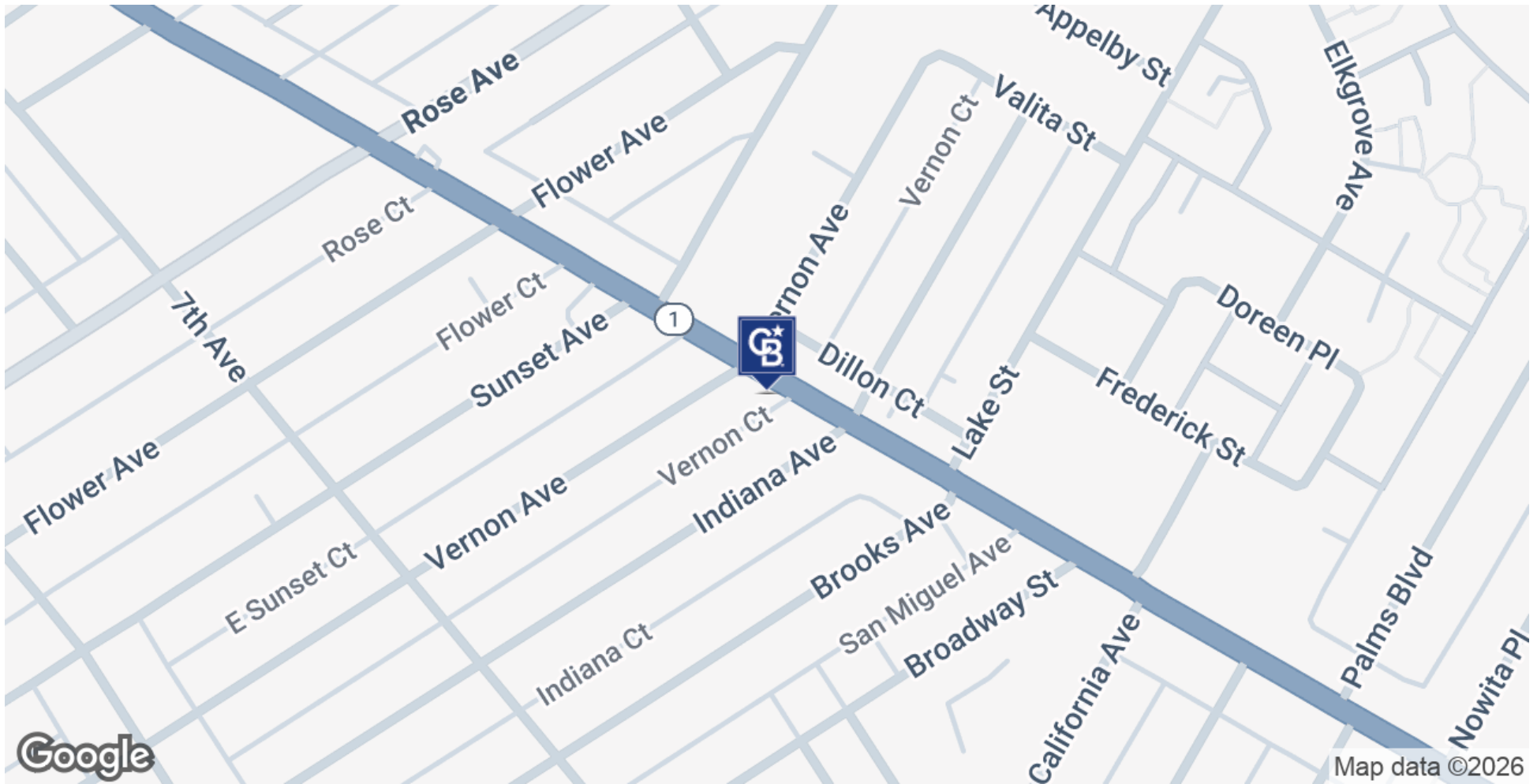
**COLDWELL BANKER**  
**COMMERCIAL**  
REALTY



# RESTAURANT | RETAIL

715 LINCOLN BLVD

715 Lincoln Boulevard Los Angeles, CA 90291



**Dave Maldonado**  
(310) 442-1624  
CalDRE #01949738



**COLDWELL BANKER**  
**COMMERCIAL**  
REALTY

©2023 Coldwell Banker. All Rights Reserved. Coldwell Banker Commercial® and the Coldwell Banker Commercial logos are trademarks of Coldwell Banker Real Estate LLC. The Coldwell Banker® System is comprised of company owned offices which are owned by a subsidiary of Anywhere Advisors LLC and franchised offices which are independently owned and operated. The Coldwell Banker System fully supports the principles of the Equal Opportunity Act.

# RESTAURANT | RETAIL

**715 LINCOLN BLVD**

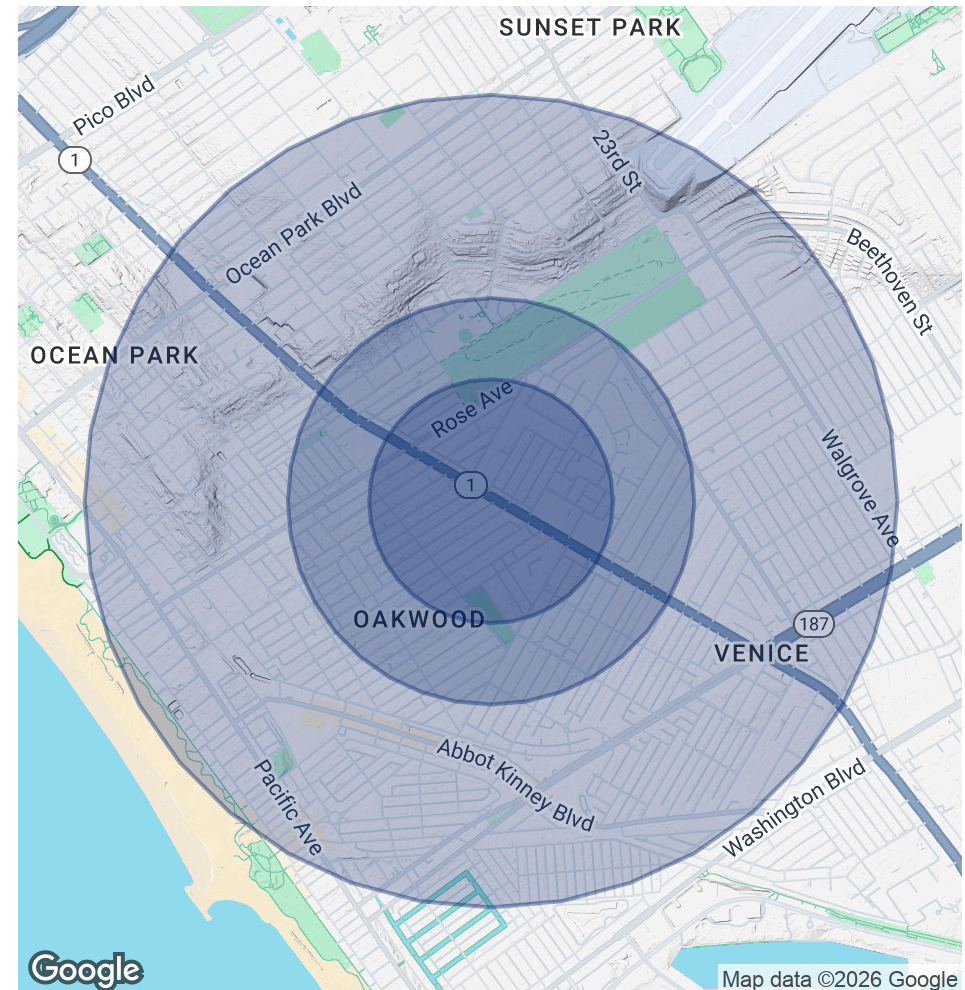
715 Lincoln Boulevard Los Angeles, CA 90291

POPULATION	0.3 MILES	0.5 MILES	1 MILE
Total Population	3,474	9,561	34,643
Average Age	41	41	42
Average Age (Male)	40	41	42
Average Age (Female)	41	41	43

HOUSEHOLDS & INCOME	0.3 MILES	0.5 MILES	1 MILE
Total Households	1,480	4,327	17,103
# of Persons per HH	2.3	2.2	2
Average HH Income	\$188,178	\$179,849	\$171,368
Average House Value	\$1,879,907	\$1,923,657	\$1,880,309

Demographics data derived from AlphaMap



**Dave Maldonado**

(310) 442-1624

CalDRE #01949738



**COLDWELL BANKER**  
**COMMERCIAL**  
REALTY