

The Savills logo consists of the word "savills" in a lowercase, red, sans-serif font, positioned within a solid yellow square.

FOR SUBLEASE

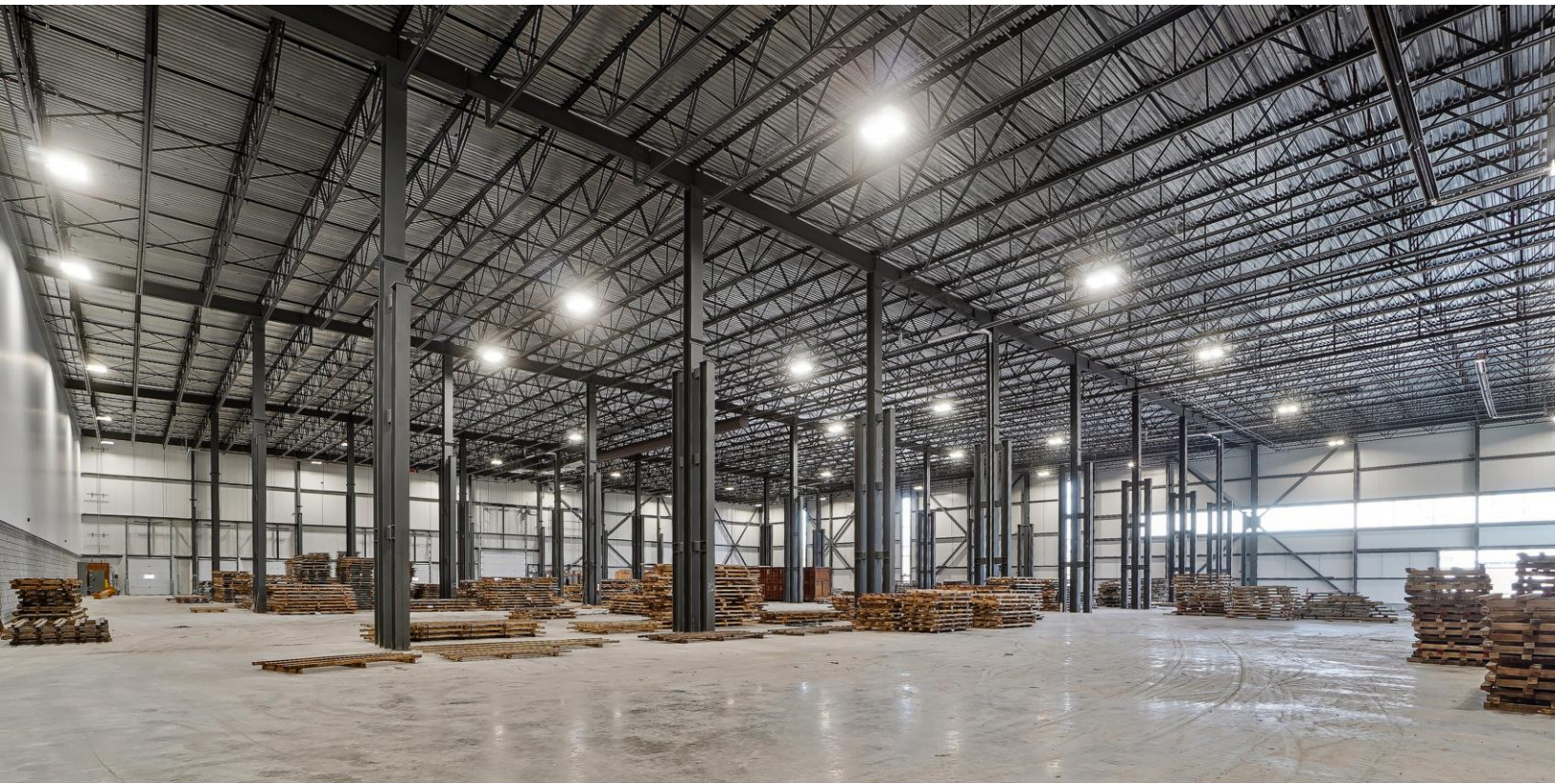
180 McArthur, Salaberry-de-Valleyfield

55 000 SQUARE FEET OF
NEW INDUSTRIAL SPACE FOR SUBLEASE



Property Highlights

- Infrastructure built to accommodate heavy cranes
- Located at the corners of Robineault street and du Havre Boulevard
- Less than 800 meters from route 132
- 17-minute drive to Highway 20 (16 km)
- ESFR sprinkler system



Property Details

Total available area 55,000 sq. ft.

Lot number 5 520 996

Clear height 36'

Shipping doors

Truck-level 5

Drive-in door 1

Zoning Industrial

Electricity 800 Amps
600 Volts

Availability Immediate

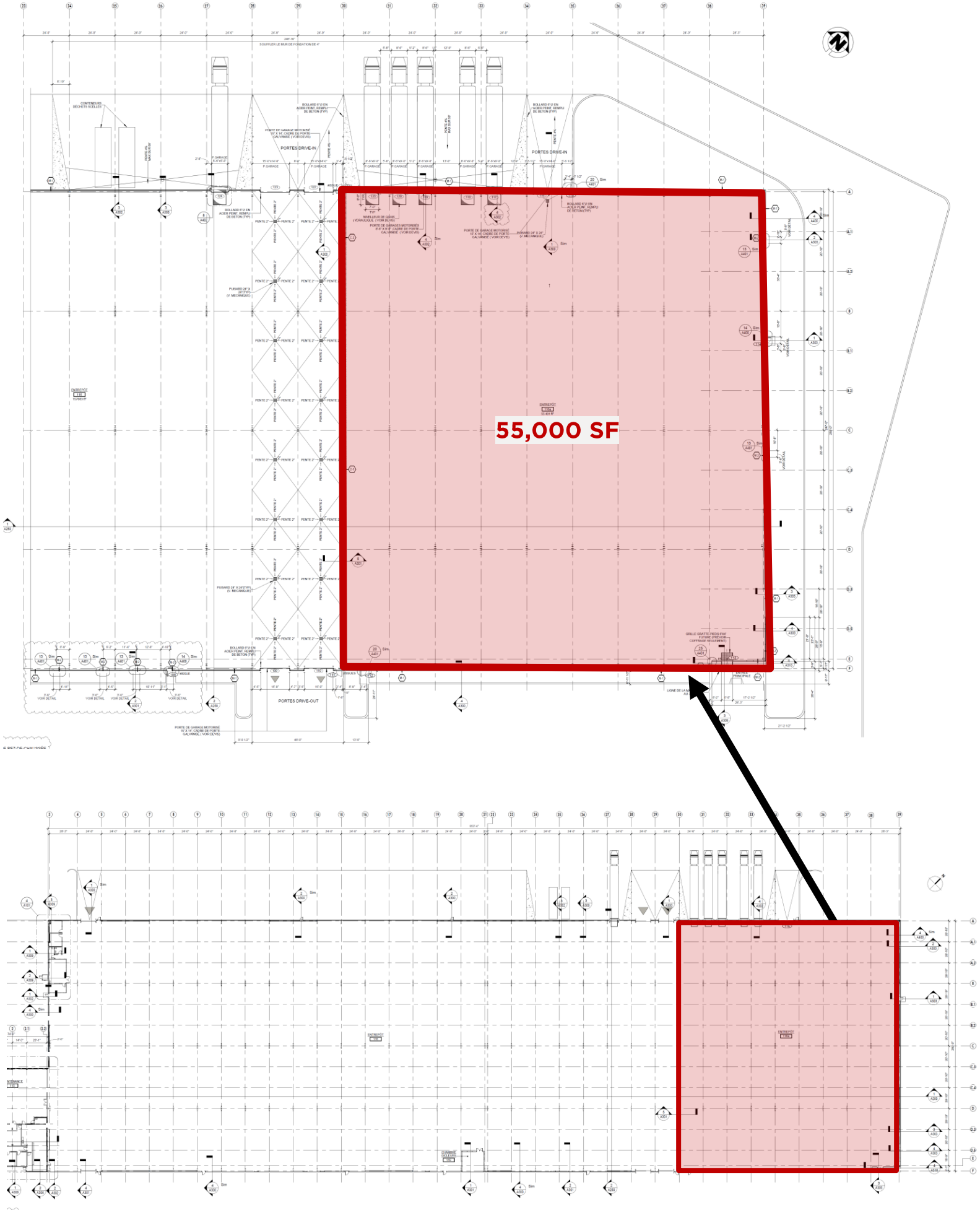


Financial Details

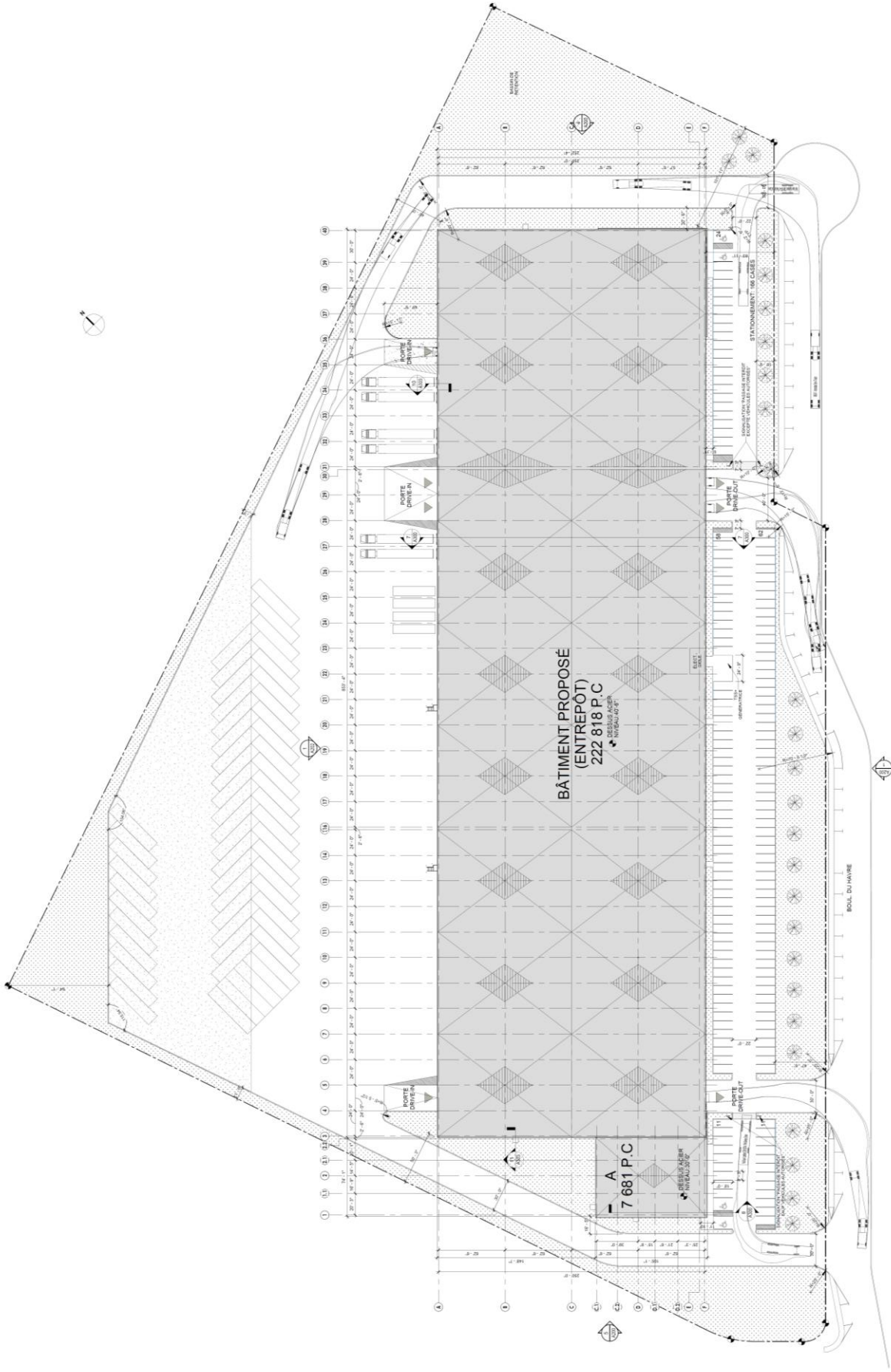
Base Rental rate Contact brokers

Additional rent \$2.50 / sq ft.

Floor Plan



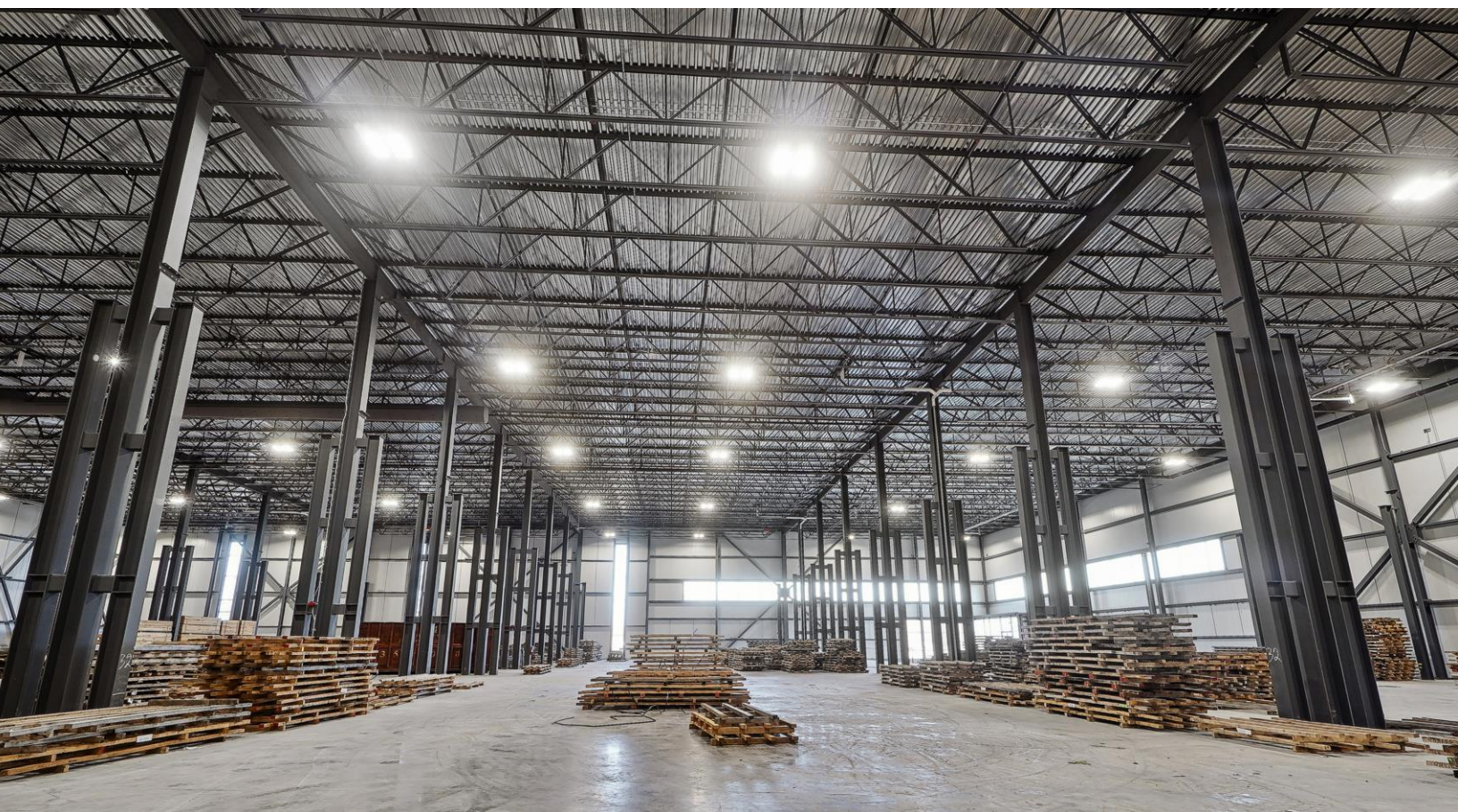
Site Plan



PLAN D'AMÉNAGEMENT
RUS ÉPREUVE 17-167

Ample trailer parking stalls available

Warehouse and shipping area





- Montreal Pierre-Elliott Trudeau Airport 40 mins
- Downtown Montreal 53 mins
- Ontario Border 25 mins
- Port of Valleyfield 27 mins



Stéphane Robillard, SIOR
 Executive Vice President
 Real Estate Broker
 +1 514 827 2700
vrobillard@savills.ca

Antoine Dumas
 Associate
 Commercial Real Estate Broker
 +1 514 917 7760
adumas@savills.ca

3773 boulevard Côte-Vertu, suite 160, Saint-Laurent, Québec H4R 2M3 | +1 514 416 1270

The information contained in this communication has been obtained from a variety of sources believed to be reliable but has not been verified. NO WARRANTY OR REPRESENTATION, EXPRESS OR IMPLIED, IS MADE AS TO THE CONDITION OF THE PROPERTY OR ACCURACY OR COMPLETENESS OF THE INFORMATION CONTAINED HEREIN AND SAME IS SUBMITTED SUBJECT TO ERRORS, OMISSIONS, CHANGE OF PRICE, RENTAL OR OTHER CONDITIONS, WITHDRAWAL WITHOUT NOTICE AND TO ANY SPECIFIC CONDITIONS IMPOSED BY THE PROPERTY OWNER OR LESSOR.