



**FOR LEASE**

## *Reflections IV*

2901 S Lynnhaven Road  
Virginia Beach, VA

**Pat Mugler**

Executive Vice President  
+1 757 228 1831  
[pat.mugler@colliers.com](mailto:pat.mugler@colliers.com)

**Ricky Anderson**

Executive Vice President  
+1 757 217 1892  
[ricky.anderson@colliers.com](mailto:ricky.anderson@colliers.com)

150 West Main Street  
Suite 1100  
Norfolk, VA 23510  
P: +1 757 490 3300

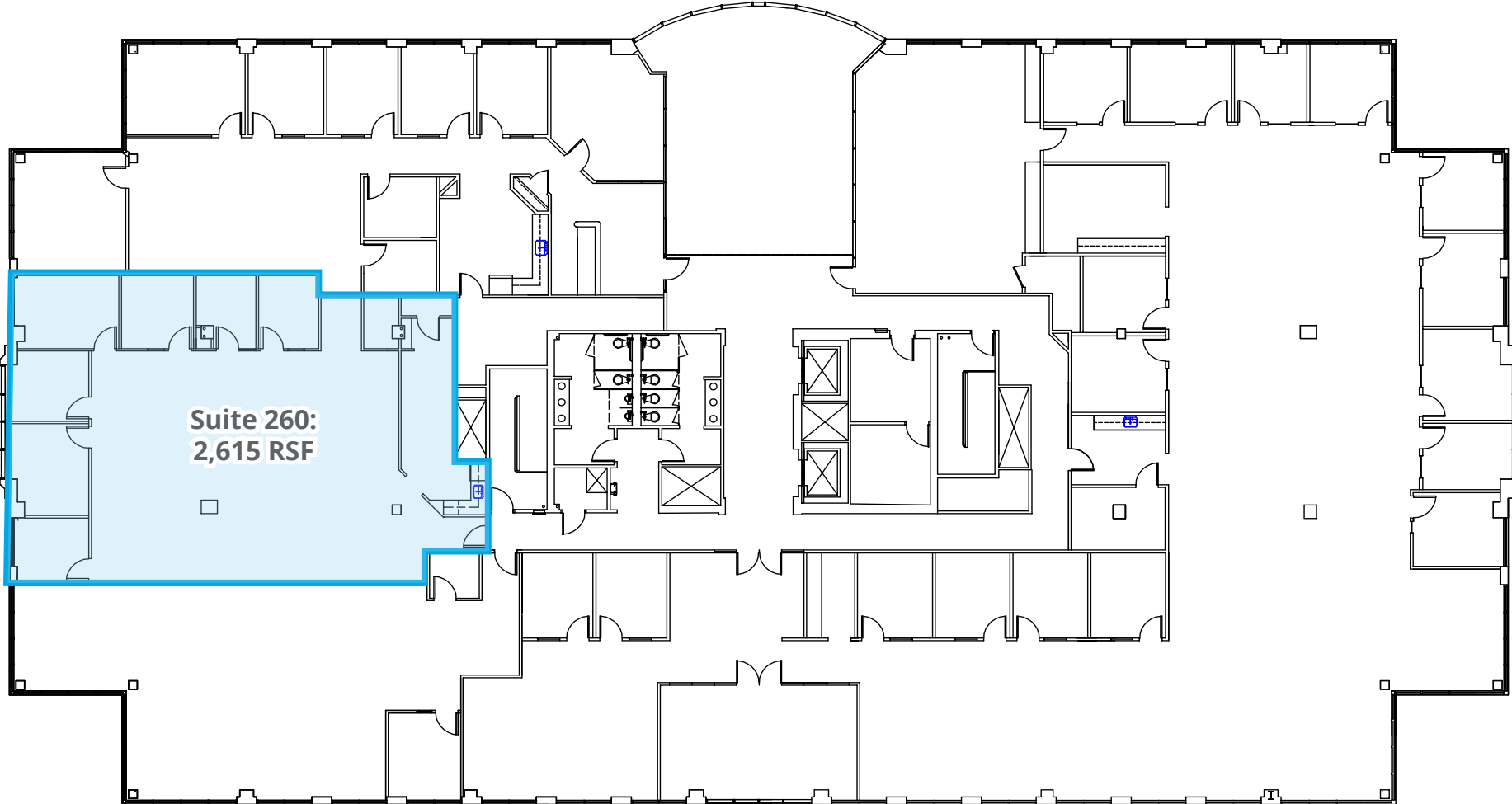
# Features

- Four Story, Class A office building totaling 80,000 RSF
- Built in 1999
- Located in the Reflections Office Park just one stoplight from I-264
- High quality common area finishes with great floor to ceiling window lines
- Available Space:
  - Suite 260: 2,615 RSF
  - Suite 450: 3,875 RSF
- 4.5/1,000 SF parking ratio
- Monument signage available
- Lease Rate: \$24.00 PSF, Full Service



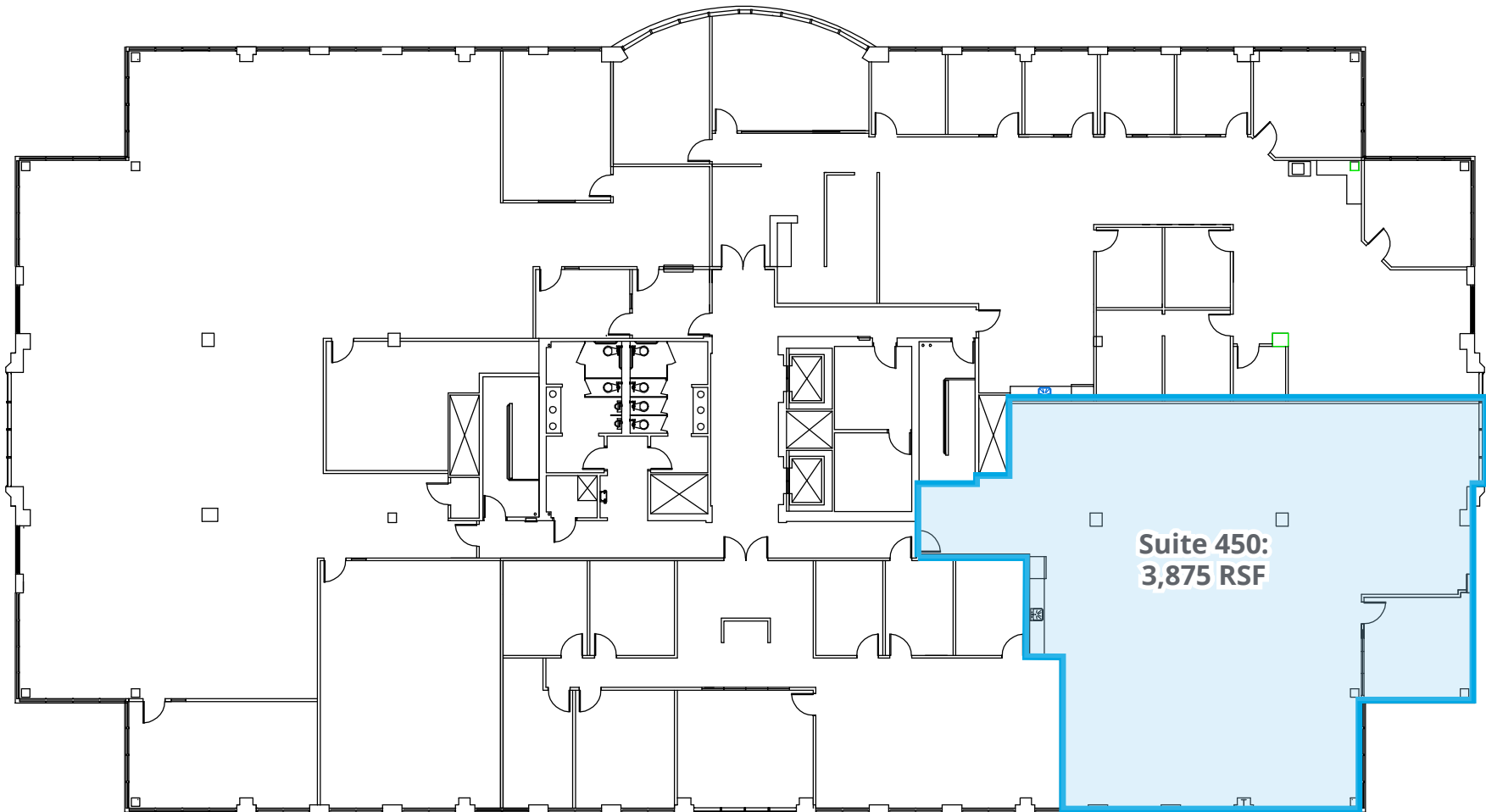
# Second Floor Plan

2,615 RSF available



# Fourth Floor Plan

3,875 RSF available





150 West Main Street  
Suite 1100  
Norfolk, VA 23510  
P: +1 757 490 3300

**Pat Mugler**

Executive Vice President  
+1 757 228 1831  
pat.mugler@colliers.com

**Ricky Anderson**

Executive Vice President  
+1 757 217 1892  
ricky.anderson@colliers.com

This document has been prepared by Colliers International for advertising and general information only. Colliers International makes no guarantees, representations or warranties of any kind, expressed or implied, regarding the information including, but not limited to, warranties of content, accuracy and reliability. Any interested party should undertake their own inquiries as to the accuracy of the information. Colliers International excludes unequivocally all inferred or implied terms, conditions and warranties arising out of this document and excludes all liability for loss and damages arising there from. This publication is the copyrighted property of Colliers International and/or its licensor(s). ©2026. All rights reserved.

