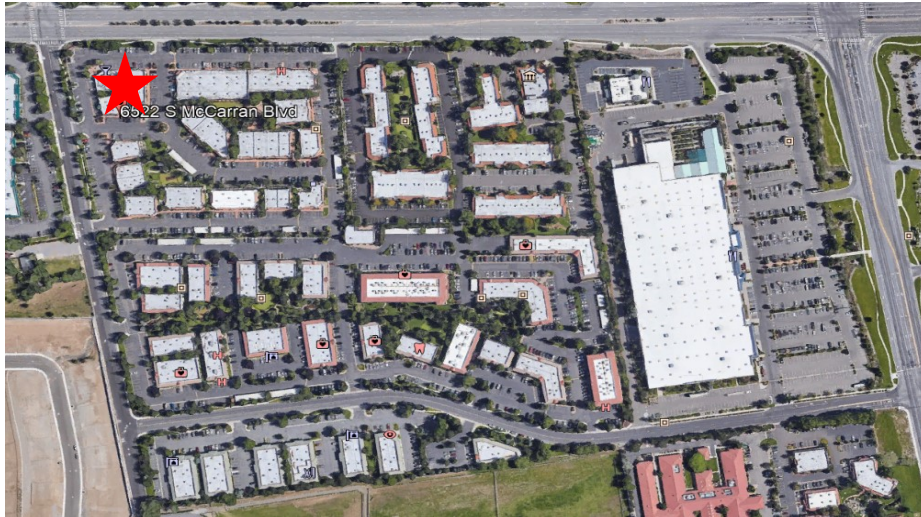




The Ribeiro Companies

FOR LEASE OUTSTANDING MEDICAL FACILITY HIGH TRAFFIC CORNER



6522 S. MCCARRAN BOULEVARD, SUITE A RENO, NV 89509 QUAIL CORNERS ASSOCIATION

THE RIBEIRO COMPANIES HAVE SPECIALIZED IN COMMERCIAL PROPERTIES FOR OVER 50 YEARS.

**EXCLUSIVELY LISTED
LEASE OPPORTUNITY**

EDWARD G. YUILL B.0018931.LLC
ED.YUILL@RIBEIROCORP.COM

**CALL US TODAY AT
775.825.7979**



The Ribeiro Companies

6490 S. McCarran Blvd., Bldg. E
Reno, NV 89509

www.ribeirocorp.com

OFFICE HOURS:
Monday-Friday
8:00 AM—5:00 PM

This information has been secured from sources we believe to be reliable, however, we make no representations or warranties, expressed or implied, as to the accuracy of the information. References to square footage or age are approximate. Buyer must verify the information and bears all risk for any inaccuracies. © 2014 The Ribeiro Companies
www.ribeirocorp.com

Project Mgt./Brokerage: Edward G. Yuill

Design/Development: Johnny A. Ribeiro



The Ribeiro Companies

PROPERTY INFORMATION

6522 S. MCCARRAN BOULEVARD, SUITE A

RENO, NV 89509

Asking Rent:	\$6,338.00 Per Month (\$2.25 psf)
CAM:	\$3,014.00 Per Month (\$1.07 psf)
Property Type:	Reno Planned Development (PUD)
Lease Type:	NNN
Signage:	Building and Plantar Monument
Tenancy:	Multi
Square Footage:	2,817 sq. ft.
Available:	Now
Layout:	6 Exam rooms, 1 Procedure room, 1 X-Ray Appliance Room, Recovery Room, Waiting/Reception, and Break Room.
Year Built:	1999
Broker:	3%

THE RIBEIRO COMPANIES HAVE SPECIALIZED IN COMMERCIAL PROPERTIES FOR OVER 50 YEARS.

**EXCLUSIVELY LISTED
LEASE OPPORTUNITY**

EDWARD G. YUILL B.0018931.LLC
ED.YUILL@RIBEIROCORP.COM

**CALL US TODAY AT
775.825.7979**



OFFICE HOURS:
Monday-Friday
8:00 AM—5:00 PM

6490 S. McCarran Blvd., Bldg. E
Reno, NV 89509

www.ribeirocorp.com

This information has been secured from sources we believe to be reliable, however, we make no representations or warranties, expressed or implied, as to the accuracy of the information. References to square footage or age are approximate. Buyer must verify the information and bears all risk for any inaccuracies. © 2014 The Ribeiro Companies
www.ribeirocorp.com

Project Mgt./Brokerage: Edward G. Yuill

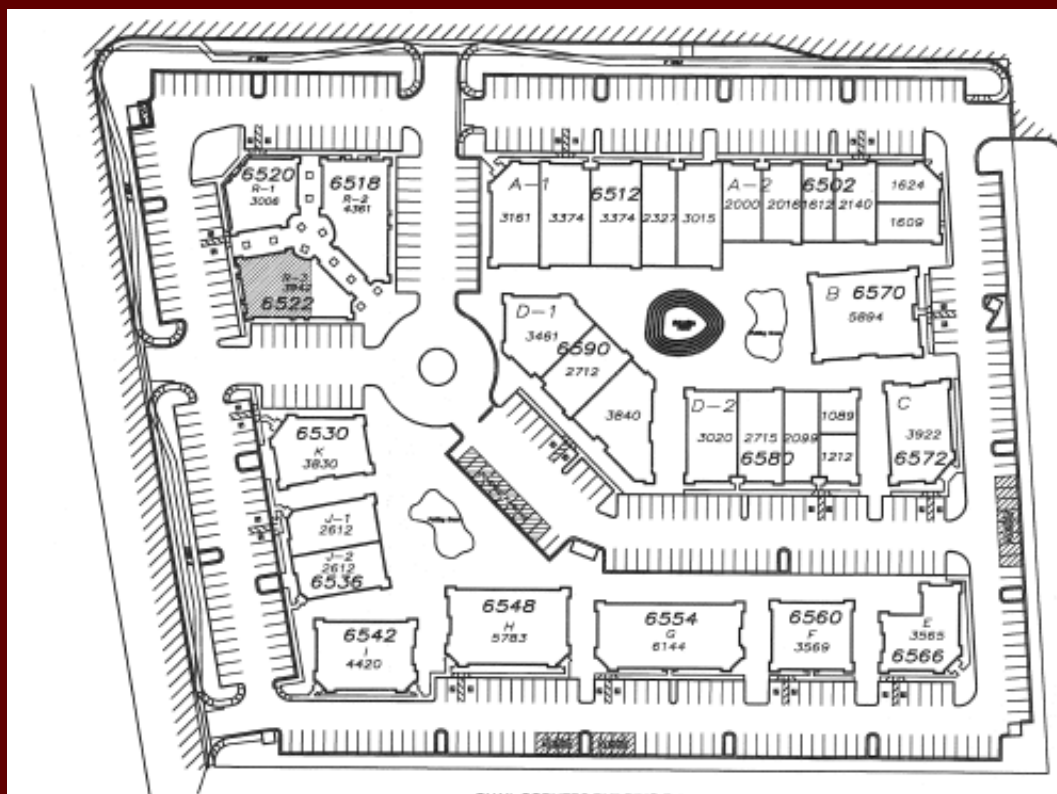
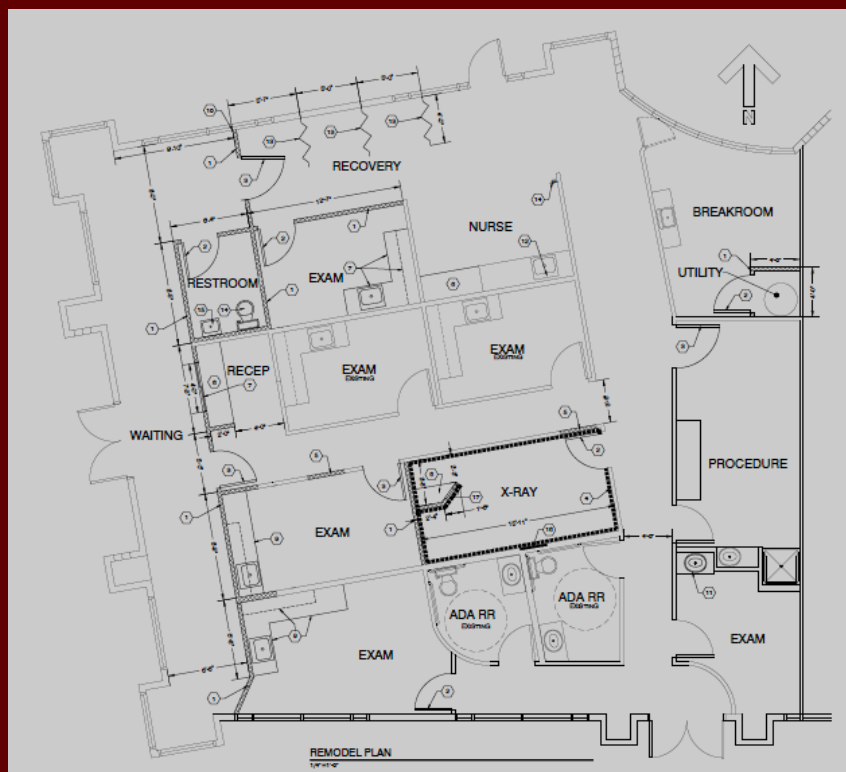
Design/Development: Johnny A. Ribeiro



The Ribeiro Companies

FLOOR PLAN

**6522 S. MCCARRAN BOULEVARD, SUITE A
RENO, NV 89509**



THE RIBEIRO COMPANIES HAVE SPECIALIZED IN COMMERCIAL PROPERTIES FOR OVER 50 YEARS.

**EXCLUSIVELY LISTED
LEASE OPPORTUNITY**

EDWARD G. YUILL B.0018931.LLC
ED.YUILL@RIBEIROCORP.COM

**CALL US TODAY AT
775.825.7979**



The Ribeiro Companies

OFFICE HOURS:
Monday-Friday
8:00 AM—5:00 PM

6490 S. McCarran Blvd., Bldg. E
Reno, NV 89509

www.ribeirocorp.com

This information has been secured from sources we believe to be reliable, however, we make no representations or warranties, expressed or implied, as to the accuracy of the information. References to square footage or age are approximate. Buyer must verify the information and bears all risk for any inaccuracies. © 2014 The Ribeiro Companies
www.ribeirocorp.com

Project Mgt./Brokerage: Edward G. Yuill

Design/Development: Johnny A. Ribeiro