



## PROPERTY DESCRIPTION

Discover the ideal space at 3501-3589 Fairview Industrial Dr SE, Salem, OR, 97302. This prime property boasts convenient access to I-5 and proximity to downtown Salem, ensuring ease of commuting for tenants and clients alike.

## PROPERTY HIGHLIGHTS

- - Immediate I-5 access
- - Proximity to downtown Salem
- - High-speed internet connectivity
- - Ample on-site parking
- - Diverse floor plan options
- - Convenient access to public transportation
- - Well-maintained facilities
- - CAMS = \$0.22 / SF

SPACES	LEASE RATE	SPACE SIZE
3541 Fairview Industrial Dr SE	\$6,278 per month	5,022 SF

**MATT HOLSTEGE**

503.371.0718

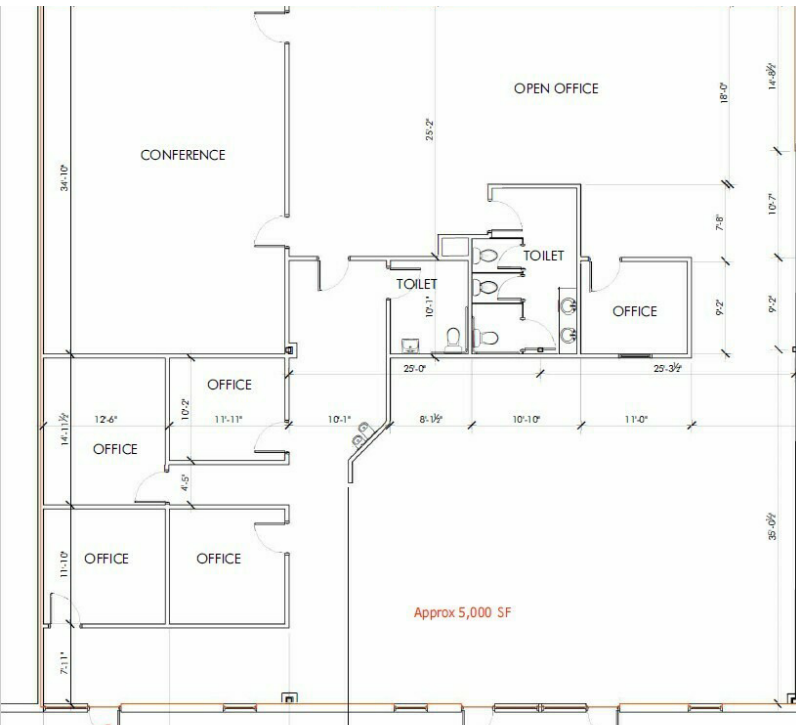
mholstege@stateinv.com

**DANIELLE FRANCISCO**

503.371.0745

dfrancisco@stateinv.com

*Notice: Employees of State Investments LLC are not licensed real estate brokers or property managers.*



**MATT HOLSTEGE**  
 503.371.0718  
 mholstega@stateinv.com

**DANIELLE FRANCISCO**  
 503.371.0745  
 dfrancisco@stateinv.com

*Notice: Employees of State Investments LLC are not licensed real estate brokers or property managers.*



**MATT HOLSTEGE**

503.371.0718

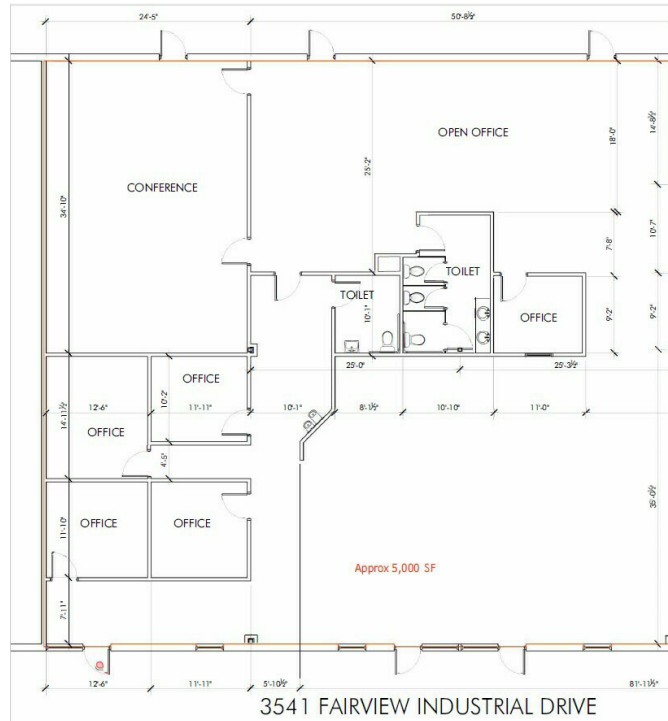
mholstege@stateinv.com

**DANIELLE FRANCISCO**

503.371.0745

dfrancisco@stateinv.com

*Notice: Employees of State Investments LLC are not licensed real estate brokers or property managers.*



**LEASE INFORMATION**

Lease Type:	NNN	Lease Term:	Negotiable
Total Space:	5,022 SF	Lease Rate:	\$6,277.50 per month

**AVAILABLE SPACES**

SUITE	TENANT	SIZE (SF)	LEASE TYPE	LEASE RATE	DESCRIPTION
3541 Fairview Industrial Dr SE	Available	5,022 SF	NNN	\$6,278 per month	<p>Approximately 5,022 SF suite located in Fairview Business Park. This location offers a prime location for a variety of tenants. The area is surrounded by a thriving business community and is in close proximity to popular dining options, shopping centers, and recreational facilities. Excellent proximity to Interstate 5 and Highway 22. Minutes from Downtown Salem.</p> <ul style="list-style-type: none"> <li>- Landlord to install new flooring, paint, etc.</li> <li>- Tenant Improvements negotiable.</li> <li>- High-speed internet connectivity</li> <li>- Ample on-site parking</li> <li>- Well-maintained facilities</li> <li>- CAMS = \$0.22 / SF</li> </ul>

**MATT HOLSTEGE** | **DANIELLE FRANCISCO**  
 503.371.0718 | 503.371.0745  
 mholstege@stateinv.com | dfrancisco@stateinv.com

*Notice: Employees of State Investments LLC are not licensed real estate brokers or property managers.*