



NEXUS

AT GREEN VALLEY CORPORATE CENTER





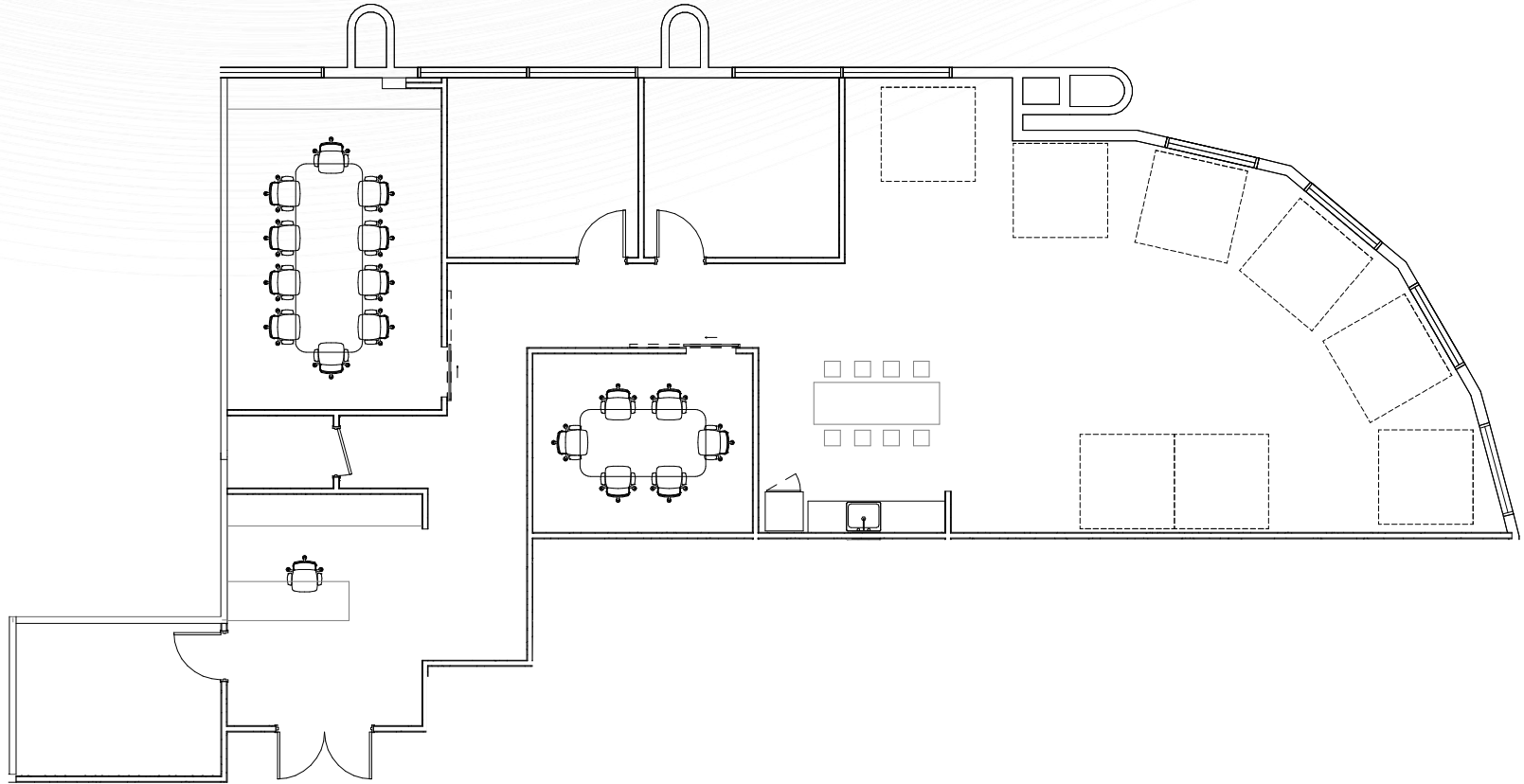
NEXUS

AT GREEN VALLEY CORPORATE CENTER

1401

N. GREEN VALLEY
PARKWAY

SUITE 240 | ±2,886 RSF



AVAILABLE 5/1/26

FOR MORE INFORMATION,
PLEASE CONTACT:

CHARLES VAN GEEL

Senior Director
+1 702 688 6966
charles.vangeel@cushwake.com
LIC #BS.044616 / PM.162448

MATTHEW BEBAN

Associate
+1 702 364 5353
matthew.beban@cushwake.com
LIC #S.0202638

EST. 1984
Brentwood





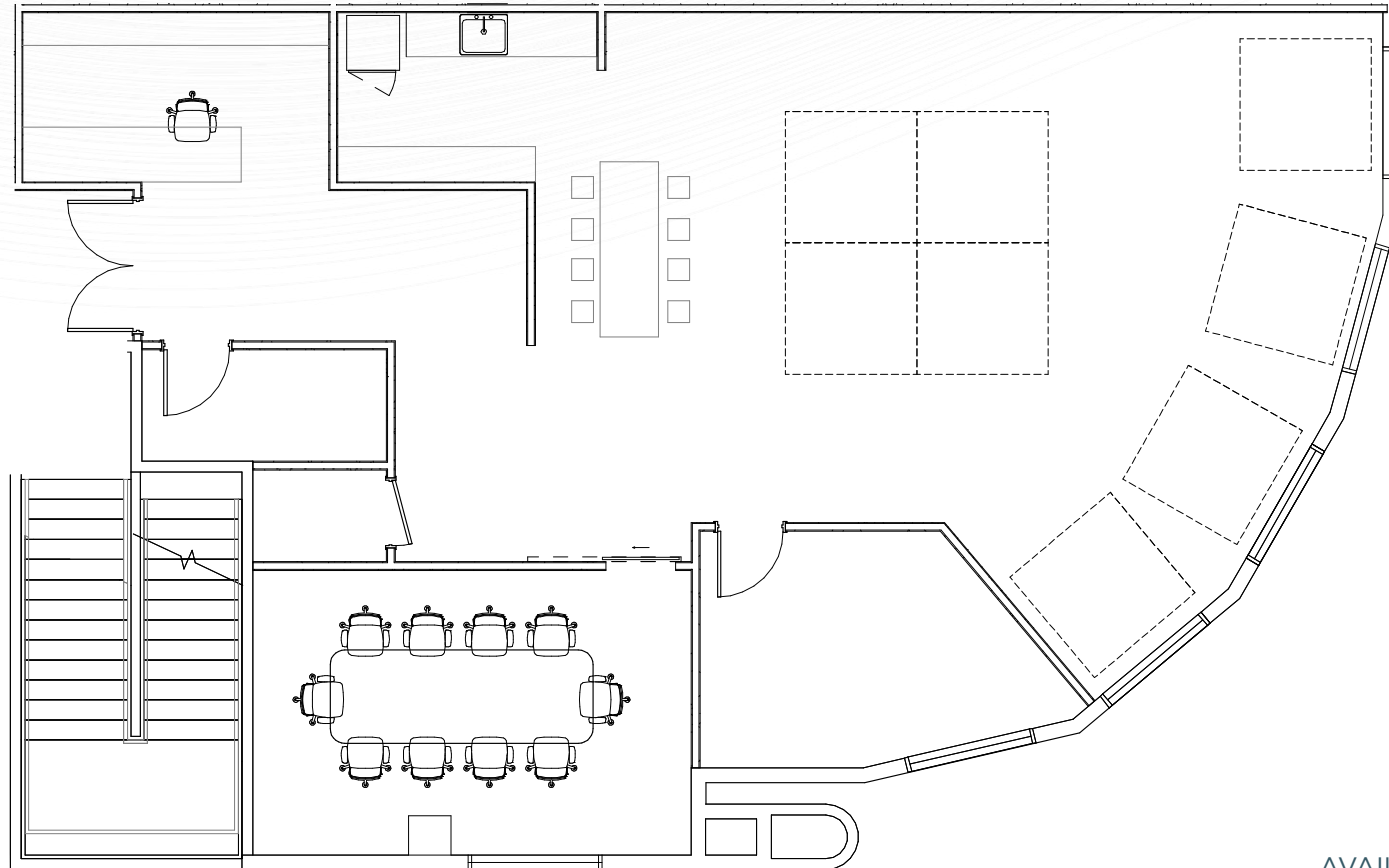
NEXUS

AT GREEN VALLEY CORPORATE CENTER

1401

N. GREEN VALLEY
PARKWAY

SUITE 250 | ±2,211 RSF



AVAILABLE 5/1/26

FOR MORE INFORMATION,
PLEASE CONTACT:

CHARLES VAN GEEL

Senior Director
+1 702 688 6966
charles.vangeel@cushwake.com
LIC #BS.044616 / PM.162448

MATTHEW BEBAN

Associate
+1 702 364 5353
matthew.beban@cushwake.com
LIC #S.0202638

EST. 1984
Brentwood





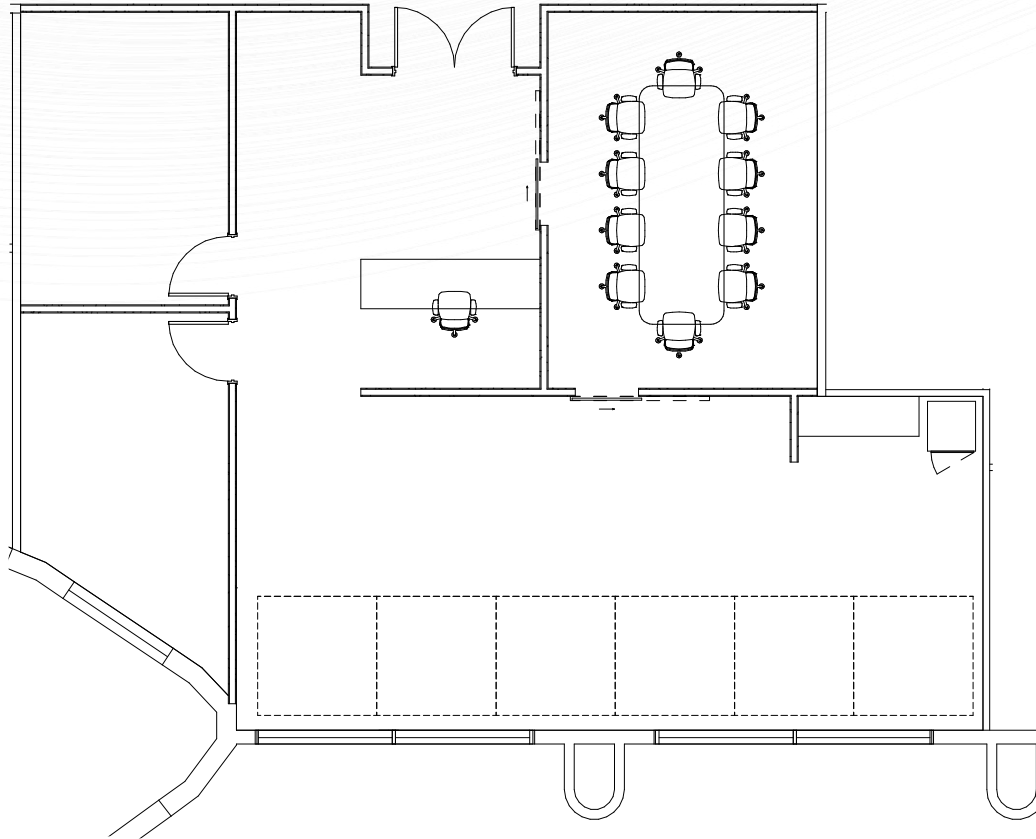
NEXUS

AT GREEN VALLEY CORPORATE CENTER

1401

N. GREEN VALLEY
PARKWAY

SUITE 280 | ±1,797 RSF



FOR MORE INFORMATION,
PLEASE CONTACT:

CHARLES VAN GEEL

Senior Director
+1 702 688 6966
charles.vangeel@cushwake.com
LIC #BS.044616 / PM.162448

MATTHEW BEBAN

Associate
+1 702 364 5353
matthew.beban@cushwake.com
LIC #S.0202638

EST. 1984
Brentwood

