

STR # 35402 / Created January 16, 2021

Monthly STAR Report : Quality Inn & Suites Jackson

For the Month of: December 2020

Currency: US Dollar / Competitive Set Data Excludes Subject Property



Table Of Contents	1
Monthly Performance at a Glance	2
STAR Summary	3
Competitive Set Report	4
Response Report	5
Day of Week & Weekday/Weekend	6
Daily Data for the Month	7
Help	8

Corporate North American Headquarters
T: +1 (615) 824 8664
support@str.com www.str.com

International Headquarters
T: +44 (0) 207 922 1930
hotelinfo@str.com www.str.com

This STR Report is a publication of STR, LLC and STR Global, Ltd., CoStar Group companies, and is intended solely for use by paid subscribers. The information in the STR Report is provided on an "as is" and "as available" basis and should not be construed as investment, tax, accounting or legal advice. Reproduction or distribution of this STR Report, in whole or part, without written permission is prohibited and subject to legal action. If you have received this report and are NOT a subscriber to this STR Report, please contact us immediately. Source: 2021 STR, LLC / STR Global, Ltd. trading as "STR". © CoStar Realty Information, Inc.

Tab 2 - Monthly Performance at a Glance - My Property vs. Competitive Set

Quality Inn & Suites Jackson 5723 I 55 N Jackson, MS 39206-2939 Phone: (601) 957-8557

STR # 35402 ChainID: MS375 MgtCo: MMI Hotel Group Owner: Desai Hospitality Group

For the Month of: December 2020 Date Created: January 16, 2021 Monthly Competitive Set Data Excludes Subject Property

December 2020

	Occupancy (%)			ADR			RevPAR		
	My Prop	Comp Set	Index (MPI)	My Prop	Comp Set	Index (ARI)	My Prop	Comp Set	Index (RGI)
Current Month	37.0	28.3	130.6	52.71	54.93	96.0	19.49	15.55	125.3
Year To Date	34.1	35.9	94.9	55.16	57.05	96.7	18.79	20.48	91.8
Running 3 Month	34.2	30.9	110.5	56.51	57.53	98.2	19.32	17.80	108.5
Running 12 Month	34.1	35.9	94.9	55.16	57.05	96.7	18.79	20.48	91.8

December 2020 vs. 2019 Percent Change (%)

	Occupancy			ADR			RevPAR		
	My Prop	Comp Set	Index (MPI)	My Prop	Comp Set	Index (ARI)	My Prop	Comp Set	Index (RGI)
Current Month		-13.9			-0.1			-13.9	
Year To Date	-32.0	-14.1	-20.8	-21.0	-0.3	-20.8	-46.3	-14.4	-37.3
Running 3 Month		-23.3			2.0			-21.8	
Running 12 Month	-32.0	-14.1	-20.8	-21.0	-0.3	-20.8	-46.3	-14.4	-37.3

This STR Report is a publication of STR, LLC and STR Global, Ltd., CoStar Group companies, and is intended solely for use by paid subscribers. The information in the STR Report is provided on an "as is" and "as available" basis and should not be construed as investment, tax, accounting or legal advice. Reproduction or distribution of this STR Report, in whole or part, without written permission is prohibited and subject to legal action. If you have received this report and are NOT a subscriber to this STR Report, please contact us immediately. Source: 2021 STR, LLC / STR Global, Ltd. trading as "STR". © CoStar Realty Information, Inc.

Tab 3 - STAR Summary - My Property vs. Comp Set and Industry Segments

Quality Inn & Suites Jackson 5723 I 55 N Jackson, MS 39206-2939 Phone: (601) 957-8557

STR # 35402 ChainID: MS375 MgtCo: MMI Hotel Group Owner: Desai Hospitality Group

For the Month of: December 2020 Date Created: January 16, 2021 Monthly Competitive Set Data Excludes Subject Property

	Occupancy (%)							
	Current Month	% Chg	Year to Date	% Chg	Running 3 Month	% Chg	Running 12 Month	% Chg
Quality Inn & Suites Jackson	37.0		34.1	-32.0	34.2		34.1	-32.0
Market: Jackson, MS	40.7	-11.3	45.0	-21.7	44.1	-15.6	45.0	-21.7
Market Class: Midscale Class	40.8	3.0	45.1	-14.4	44.8	-3.2	45.1	-14.4
Submarket: Jackson I-55 North/Clinton, MS	41.6	-14.9	47.9	-19.0	45.7	-15.8	47.9	-19.0
Submarket Scale: Midscale Chains	41.3	-13.5	45.0	-21.2	43.7	-18.3	45.0	-21.2
Competitive Set: Competitors	28.3	-13.9	35.9	-14.1	30.9	-23.3	35.9	-14.1

	Average Daily Rate							
	Current Month	% Chg	Year to Date	% Chg	Running 3 Month	% Chg	Running 12 Month	% Chg
Quality Inn & Suites Jackson	52.71		55.16	-21.0	56.51		55.16	-21.0
Market: Jackson, MS	70.96	-7.4	73.05	-8.9	73.13	-9.0	73.05	-8.9
Market Class: Midscale Class	63.49	-5.2	64.47	-5.7	64.79	-3.8	64.47	-5.7
Submarket: Jackson I-55 North/Clinton, MS	69.65	-7.5	71.73	-9.5	72.15	-8.6	71.73	-9.5
Submarket Scale: Midscale Chains	75.55	-7.5	79.31	-6.2	78.73	-7.7	79.31	-6.2
Competitive Set: Competitors	54.93	-0.1	57.05	-0.3	57.53	2.0	57.05	-0.3

	RevPAR							
	Current Month	% Chg	Year to Date	% Chg	Running 3 Month	% Chg	Running 12 Month	% Chg
Quality Inn & Suites Jackson	19.49		18.79	-46.3	19.32		18.79	-46.3
Market: Jackson, MS	28.90	-17.8	32.89	-28.7	32.22	-23.1	32.89	-28.7
Market Class: Midscale Class	25.91	-2.3	29.10	-19.3	29.02	-6.8	29.10	-19.3
Submarket: Jackson I-55 North/Clinton, MS	28.97	-21.2	34.33	-26.7	32.96	-23.1	34.33	-26.7
Submarket Scale: Midscale Chains	31.20	-20.0	35.66	-26.0	34.44	-24.5	35.66	-26.0
Competitive Set: Competitors	15.55	-13.9	20.48	-14.4	17.80	-21.8	20.48	-14.4

	Census/Sample - Properties & Rooms					
	Census		Sample		Sample %	
	Properties	Rooms	Properties	Rooms	Rooms	
	Market: Jackson, MS	133	11233	102	8714	77.6
Market Class: Midscale Class	19	1332	15	1055	79.2	
Submarket: Jackson I-55 North/Clinton, MS	59	5357	50	4547	84.9	
Submarket Scale: Midscale Chains	18	1564	18	1564	100.0	
Competitive Set: Competitors	4	403	4	403	100.0	

Supply			
Month % Chg	YTD % Chg	Run 3 Mon % Chg	Run 12 Mon % Chg
	-1.8		-1.8
1.6	1.5	2.1	1.5
0.0	0.0	0.0	0.0
2.5	0.4	2.5	0.4
5.2	-1.2	5.2	-1.2
0.0	-0.4	0.0	-0.4

Demand			
Month % Chg	YTD % Chg	Run 3 Mon % Chg	Run 12 Mon % Chg
	-33.2		-33.2
-9.8	-20.5	-13.8	-20.5
3.0	-14.4	-3.2	-14.4
-12.7	-18.7	-13.7	-18.7
-9.0	-22.1	-14.0	-22.1
-13.9	-14.5	-23.3	-14.5

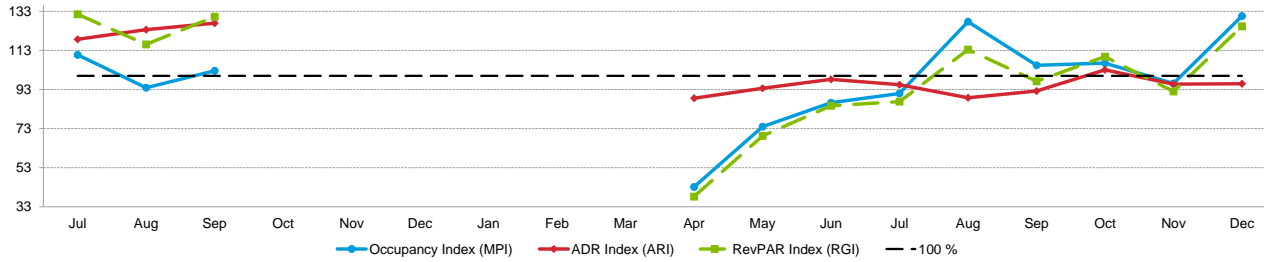
Revenue			
Month % Chg	YTD % Chg	Run 3 Mon % Chg	Run 12 Mon % Chg
	-47.3		-47.3
-16.4	-27.6	-21.5	-27.6
-2.3	-19.3	-6.8	-19.3
-19.2	-26.4	-21.2	-26.4
-15.8	-26.9	-20.6	-26.9
-13.9	-14.7	-21.8	-14.7

Pipeline			
Market: Jackson, MS			
Under Construction		Planning	
Properties	Rooms	Properties	Rooms
5	638	8	762
See Help page for pipeline definitions.			

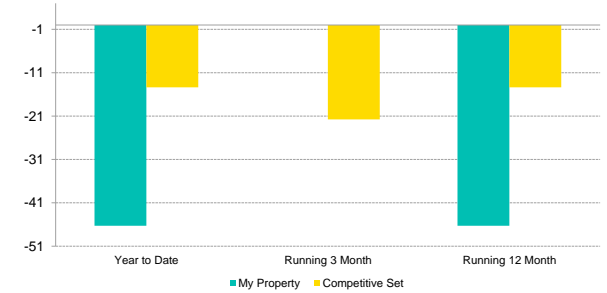
Tab 4 - Competitive Set Report

Quality Inn & Suites Jackson 5723 I 55 N Jackson, MS 39206-2939 Phone: (601) 957-8557
 STR # 35402 ChainID: MS375 MgtCo: MMI Hotel Group Owner: Desai Hospitality Group
 For the Month of: December 2020 Date Created: January 16, 2021 Monthly Competitive Set Data Excludes Subject Property

Monthly Indexes



RevPAR Percent Change



Occupancy (%)	2019						2020												Year To Date			Running 3 Month			Running 12 Month		
	Jul	Aug	Sep	Oct	Nov	Dec	Jan	Feb	Mar	Apr	May	Jun	Jul	Aug	Sep	Oct	Nov	Dec	2018	2019	2020	2018	2019	2020	2018	2019	2020
My Property	54.4	42.3	41.7							10.3	28.3	41.0	41.1	41.3	36.1	35.4	30.0	37.0	45.3	50.1	34.1	37.2		34.2	45.3	50.1	34.1
Competitive Set	49.1	45.1	40.6	45.6	42.5	32.9	35.9	43.6	37.4	23.9	38.2	47.6	45.2	32.3	34.3	33.2	31.3	28.3	38.9	41.8	35.9	36.6	40.3	30.9	38.9	41.8	35.9
Index (MPI)	110.8	93.9	102.6							43.2	74.0	86.2	90.9	127.7	105.4	106.5	96.1	130.6	116.5	119.9	94.9	101.9		110.5	116.5	119.9	94.9
Rank	2 of 5	3 of 5	2 of 5							5 of 5	4 of 5	4 of 5	3 of 5	3 of 5	3 of 5	3 of 5	4 of 5	1 of 5	2 of 5	2 of 5	3 of 5	2 of 5		3 of 5	2 of 5	2 of 5	3 of 5

% Chg	2019						2020												Year To Date			Running 3 Month			Running 12 Month		
	Jul	Aug	Sep	Oct	Nov	Dec	Jan	Feb	Mar	Apr	May	Jun	Jul	Aug	Sep	Oct	Nov	Dec	2018	2019	2020	2018	2019	2020	2018	2019	2020
My Property	4.6	-13.2	-4.7							-77.9	-54.4	-21.5	-24.3	-2.4	-13.3				-19.6	10.6	-32.0	-32.2			-19.6	10.6	-32.0
Competitive Set	16.1	22.0	14.4	6.5	23.1	1.9	7.0	9.1	-24.9	-36.0	-5.3	7.0	-7.8	-28.3	-15.6	-27.2	-26.4	-13.9	-12.2	7.4	-14.1	-6.7	10.2	-23.3	-12.2	7.4	-14.1
Index (MPI)	-9.9	-28.9	-16.7							-65.5	-51.9	-26.7	-17.9	36.0	2.7				-8.4	2.9	-20.8	-27.3			-8.4	2.9	-20.8
Rank	5 of 5	5 of 5	4 of 5							5 of 5	5 of 5	5 of 5	4 of 5	2 of 5	3 of 5				3 of 5	2 of 5	5 of 5	5 of 5			3 of 5	2 of 5	5 of 5

ADR	2019						2020												Year To Date			Running 3 Month			Running 12 Month		
	Jul	Aug	Sep	Oct	Nov	Dec	Jan	Feb	Mar	Apr	May	Jun	Jul	Aug	Sep	Oct	Nov	Dec	2018	2019	2020	2018	2019	2020	2018	2019	2020
My Property	68.21	68.03	71.13							46.03	51.24	56.72	55.46	55.04	54.46	61.99	54.67	52.71	72.23	69.84	55.16	69.43		56.51	72.23	69.84	55.16
Competitive Set	57.46	55.04	56.03	56.59	57.41	54.96	54.47	57.79	55.04	51.98	54.70	57.74	58.08	61.97	59.03	60.14	57.11	54.93	57.08	57.23	57.05	56.11	56.43	57.53	57.08	57.23	57.05
Index (ARI)	118.7	123.6	126.9							88.5	93.7	98.2	95.5	88.8	92.3	103.1	95.7	96.0	126.5	122.0	96.7	123.7		98.2	126.5	122.0	96.7
Rank	2 of 5	2 of 5	2 of 5							5 of 5	4 of 5	3 of 5	3 of 5	4 of 5	4 of 5	2 of 5	4 of 5	4 of 5	2 of 5	2 of 5	3 of 5	2 of 5		4 of 5	2 of 5	2 of 5	3 of 5

% Chg	2019						2020												Year To Date			Running 3 Month			Running 12 Month		
	Jul	Aug	Sep	Oct	Nov	Dec	Jan	Feb	Mar	Apr	May	Jun	Jul	Aug	Sep	Oct	Nov	Dec	2018	2019	2020	2018	2019	2020	2018	2019	2020
My Property	-1.8	1.4	4.7							-32.0	-26.7	-18.2	-18.7	-19.1	-23.4				-2.5	-3.3	-21.0	-3.3			-2.5	-3.3	-21.0
Competitive Set	-1.5	-2.5	-0.3	-1.1	4.0	-1.2	-4.7	-0.5	-7.9	-10.7	-6.9	1.8	1.1	12.6	5.4	6.3	-0.5	-0.1	-1.6	0.3	-0.3	-3.1	0.6	2.0	-1.6	0.3	-0.3
Index (ARI)	-0.3	4.0	5.0							-23.8	-21.3	-19.6	-19.6	-28.1	-27.3				-0.9	-3.6	-20.8	-0.2			-0.9	-3.6	-20.8
Rank	3 of 5	2 of 5	2 of 5							5 of 5	5 of 5	5 of 5	5 of 5	5 of 5	5 of 5				5 of 5	3 of 5	5 of 5	3 of 5			5 of 5	3 of 5	5 of 5

RevPAR	2019						2020												Year To Date			Running 3 Month			Running 12 Month		
	Jul	Aug	Sep	Oct	Nov	Dec	Jan	Feb	Mar	Apr	May	Jun	Jul	Aug	Sep	Oct	Nov	Dec	2018	2019	2020	2018	2019	2020	2018	2019	2020
My Property	37.09	28.81	29.64							4.75	14.49	23.27	22.82	22.74	19.67	21.94	16.42	19.49	32.72	34.98	18.79	25.86		19.32	32.72	34.98	18.79
Competitive Set	28.21	24.82	22.76	25.83	24.40	18.07	19.55	25.17	20.60	12.41	20.92	27.48	26.28	20.05	20.23	19.98	17.85	15.55	22.20	23.91	20.48	20.52	22.75	17.80	22.20	23.91	20.48
Index (RGI)	131.5	116.1	130.2							38.2	69.3	84.7	86.8	113.4	97.2	109.8	92.0	125.3	147.4	146.3	91.8	126.0		108.5	147.4	146.3	91.8
Rank	1 of 5	1 of 5	1 of 5							5 of 5	5 of 5	4 of 5	4 of 5	3 of 5	3 of 5	2 of 5	4 of 5	1 of 5	1 of 5	1 of 5	4 of 5	2 of 5		2 of 5	1 of 5	1 of 5	4 of 5

% Chg	2019						2020												Year To Date			Running 3 Month			Running 12 Month		
	Jul	Aug	Sep	Oct	Nov	Dec	Jan	Feb	Mar	Apr	May	Jun	Jul	Aug	Sep	Oct	Nov	Dec	2018	2019	2020	2018	2019	2020	2018	2019	2020
My Property	2.8	-12.0	-0.2							-85.0	-66.6	-35.8	-38.5	-21.1	-33.6				-21.6	6.9	-46.3	-34.4			-21.6	6.9	-46.3
Competitive Set	14.4	19.0	14.1	5.4	28.1	0.7	1.9	8.6	-30.8	-42.8	-11.8	8.9	-6.8	-19.2	-11.1	-22.6	-26.8	-13.9	-13.6	7.7	-14.4	-9.6	10.9	-21.8	-13.6	7.7	-14.4
Index (RGI)	-10.2	-26.1	-12.5							-73.7	-62.1	-41.1	-34.0	-2.3	-25.3				-9.3	-0.7	-37.3	-27.5			-9.3	-0.7	-37.3
Rank	4 of 5	5 of 5	5 of 5							5 of 5	5 of 5	5 of 5	5 of 5	4 of 5	4 of 5				4 of 5	3 of 5	5 of 5	5 of 5			4 of 5	3 of 5	5 of 5

This STR Report is a publication of STR, LLC and STR Global, Ltd., CoStar Group companies, and is intended solely for use by paid subscribers. The information in the STR Report is provided on an "as is" and "as available" basis and should not be construed as investment, tax, accounting or legal advice. Reproduction or distribution of this STR Report, in whole or part, without written permission is prohibited and subject to legal action. If you have received this report and are NOT a subscriber to this STR Report, please contact us immediately. Source: 2021 STR, LLC / STR Global, Ltd. trading as "STR". © CoStar Realty Information, Inc.

Tab 5 - Response Report

Quality Inn & Suites Jackson 5723 I 55 N Jackson, MS 39206-2939 Phone: (601) 957-8557
 STR # 35402 ChainID: MS375 MgtCo: MMI Hotel Group Owner: Desai Hospitality Group
 For the Month of: December 2020 Date Created: January 16, 2021

This Year

Dec 11th - First Day of Hanukkah
 Dec 24th - Christmas Eve
 Dec 25th - Christmas Day
 Dec 26th - First Day of Kwanzaa
 Dec 31st - New Year's Eve

December 2020 (This Year)

Sun	Mon	Tue	Wed	Thu	Fri	Sat
		1	2	3	4	5
6	7	8	9	10	11	12
13	14	15	16	17	18	19
20	21	22	23	24	25	26
27	28	29	30	31		

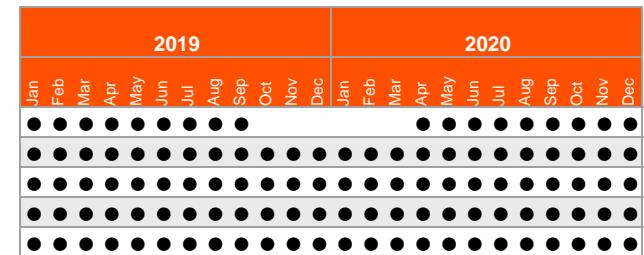
December 2019 (Last Year)

Sun	Mon	Tue	Wed	Thu	Fri	Sat
1	2	3	4	5	6	7
8	9	10	11	12	13	14
15	16	17	18	19	20	21
22	23	24	25	26	27	28
29	30	31				

Last Year

Dec 23rd - First Day of Hanukkah
 Dec 24th - Christmas Eve
 Dec 25th - Christmas Day
 Dec 26th - First Day of Kwanzaa
 Dec 31st - New Year's Eve

STR#	Name	City, State	Zip	Phone	Rooms	Open Date
35402	Quality Inn & Suites Jackson	Jackson, MS	39206-2939	(601) 957-8557	78	199712
6690	Red Roof Inn Jackson North Ridgeland	Ridgeland, MS	39157-4401	(601) 956-7707	103	198507
11020	Comfort Inn Jackson	Jackson, MS	39206-3004	(601) 956-3611	119	198510
40534	Baymont Inn & Suites Jackson Ridgeland	Jackson, MS	39206-2939	(601) 206-1616	121	200008
41458	La Quinta Inns & Suites Jackson North	Jackson, MS	39206-3044	(601) 956-8686	60	200106
					481	



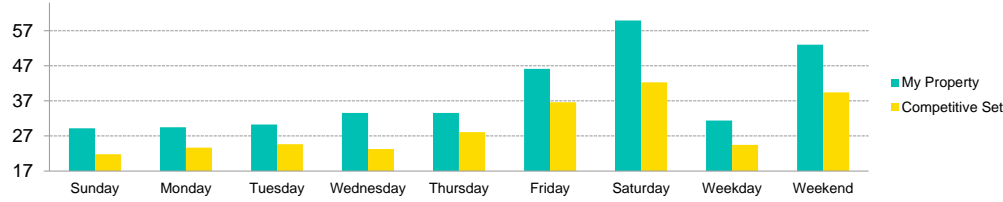
Data received:

- = Monthly Only
- = Monthly & Daily

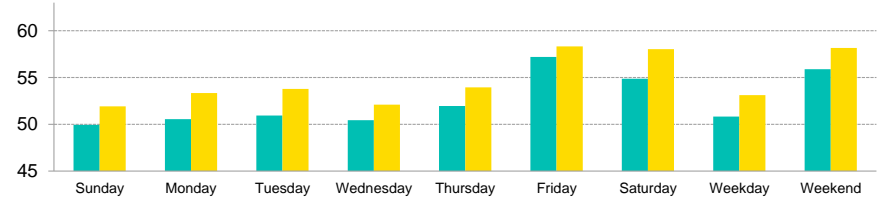
Tab 6 - Day of Week and Weekday/Weekend Report

Quality Inn & Suites Jackson 5723 I 55 N Jackson, MS 39206-2939 Phone: (601) 957-8557
 STR # 35402 ChainID: MS375 MgtCo: MMI Hotel Group Owner: Desai Hospitality Group
 For the Month of: December 2020 Date Created: January 16, 2021 Monthly Competitive Set Data Excludes Subject Property

Current Month Occupancy



Current Month ADR



Day of Week	Time Period	Occupancy (%)			Average Daily Rate			RevPAR		
		My Property	Competitive Set	Index (MPI)	My Property	Competitive Set	Index (ARI)	My Property	Competitive Set	Index (RGI)
Sunday	Current Month	29.2	21.8	133.7	49.95	51.92	96.2	14.57	11.33	128.6
	Year To Date	26.4	29.4	89.8	53.70	54.64	98.3	14.17	16.06	88.2
	Running 3 Month	26.4	24.5	107.9	53.38	54.02	98.8	14.11	13.23	106.7
	Running 12 Month	26.4	29.4	89.8	53.70	54.64	98.3	14.17	16.06	88.2
Monday	Current Month	29.5	23.7	124.5	50.55	53.34	94.8	14.91	12.63	118.0
	Year To Date	26.4	31.6	83.5	53.31	54.58	97.7	14.08	17.27	81.5
	Running 3 Month	24.2	26.8	90.2	52.17	55.11	94.7	12.60	14.76	85.4
	Running 12 Month	26.4	31.6	83.5	53.31	54.58	97.7	14.08	17.27	81.5
Tuesday	Current Month	30.3	24.7	122.7	50.94	53.78	94.7	15.41	13.27	116.2
	Year To Date	27.3	33.9	80.4	53.40	55.63	96.0	14.57	18.88	77.2
	Running 3 Month	24.7	27.7	89.0	52.98	56.80	93.3	13.06	15.74	83.0
	Running 12 Month	27.3	33.9	80.4	53.40	55.63	96.0	14.57	18.88	77.2
Wednesday	Current Month	33.6	23.3	144.3	50.43	52.11	96.8	16.94	12.13	139.7
	Year To Date	27.4	33.5	81.7	57.04	55.30	103.2	15.60	18.50	84.3
	Running 3 Month	27.9	27.1	103.1	64.60	55.39	116.6	18.03	14.99	120.3
	Running 12 Month	27.4	33.5	81.7	57.04	55.30	103.2	15.60	18.50	84.3
Thursday	Current Month	33.6	28.1	119.6	51.96	53.94	96.3	17.45	15.16	115.2
	Year To Date	30.3	34.3	88.5	54.86	55.99	98.0	16.64	19.20	86.7
	Running 3 Month	29.6	28.3	104.7	55.44	56.19	98.7	16.40	15.88	103.3
	Running 12 Month	30.3	34.3	88.5	54.86	55.99	98.0	16.64	19.20	86.7
Friday	Current Month	46.2	36.6	126.1	57.20	58.32	98.1	26.40	21.35	123.7
	Year To Date	47.7	42.5	112.1	56.18	60.54	92.8	26.80	25.76	104.1
	Running 3 Month	49.4	38.1	129.7	57.79	61.16	94.5	28.55	23.30	122.5
	Running 12 Month	47.7	42.5	112.1	56.18	60.54	92.8	26.80	25.76	104.1
Saturday	Current Month	59.9	42.3	141.8	54.88	58.03	94.6	32.89	24.53	134.1
	Year To Date	53.3	46.1	115.7	56.01	60.23	93.0	29.87	27.76	107.6
	Running 3 Month	57.5	44.3	129.7	56.84	60.50	94.0	32.68	26.82	121.9
	Running 12 Month	53.3	46.1	115.7	56.01	60.23	93.0	29.87	27.76	107.6
Weekday/Weekend	Current Month	31.4	24.4	128.4	50.84	53.11	95.7	15.95	12.98	122.9
	Year To Date	27.6	32.6	84.6	54.49	55.26	98.6	15.01	17.99	83.5
	Running 3 Month	26.6	26.9	98.9	55.90	55.56	100.6	14.86	14.93	99.5
	Running 12 Month	27.6	32.6	84.6	54.49	55.26	98.6	15.01	17.99	83.5
Weekend (Fri-Sat)	Current Month	53.0	39.4	134.5	55.89	58.16	96.1	29.65	22.94	129.2
	Year To Date	50.5	44.3	114.0	56.09	60.38	92.9	28.34	26.76	105.9
	Running 3 Month	53.5	41.2	129.7	57.28	60.80	94.2	30.62	25.06	122.2
	Running 12 Month	50.5	44.3	114.0	56.09	60.38	92.9	28.34	26.76	105.9
Total	Current Month	37.0	28.3	130.6	52.71	54.93	96.0	19.49	15.55	125.3
	Year To Date	34.1	35.9	94.9	55.16	57.05	96.7	18.79	20.48	91.8
	Running 3 Month	34.2	30.9	110.5	56.51	57.53	98.2	19.32	17.80	108.5
	Running 12 Month	34.1	35.9	94.9	55.16	57.05	96.7	18.79	20.48	91.8

This STR Report is a publication of STR, LLC and STR Global, Ltd., CoStar Group companies, and is intended solely for use by paid subscribers. The information in the STR Report is provided on an "as is" and "as available" basis and should not be construed as investment, tax, accounting or legal advice. Reproduction or distribution of this STR Report, in whole or part, without written permission is prohibited and subject to legal action. If you have received this report and are NOT a subscriber to this STR Report, please contact us immediately. Source: 2021 STR, LLC / STR Global, Ltd. trading as "STR". © CoStar Realty Information, Inc.

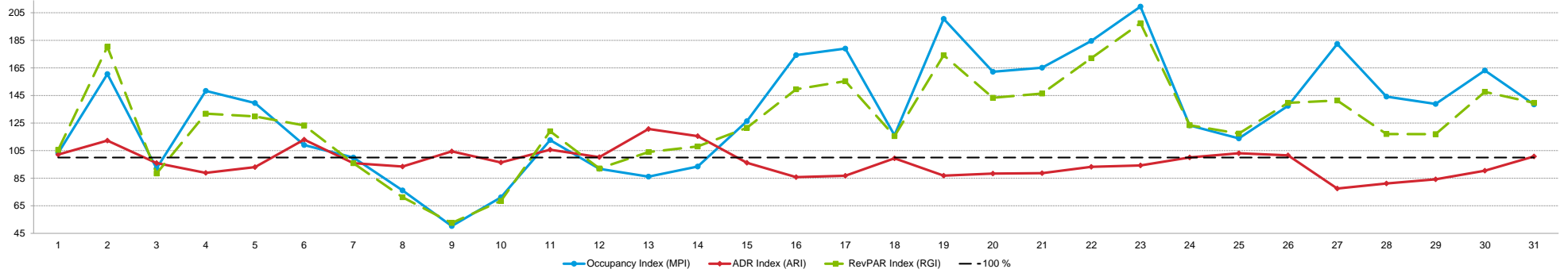
Tab 7 - Daily Data for the Month

Quality Inn & Suites Jackson 5723 I 55 N Jackson, MS 39206-2939 Phone: (601) 957-8557

STR # 35402 ChainID: MS375 MgtCo: MMI Hotel Group Owner: Desai Hospitality Group

For the Month of: December 2020 Date Created: January 16, 2021 Daily Competitive Set Data Excludes Subject Property

Daily Indexes for the Month of December



	Tu	We	Th	Fr	Sa	Su	Mo	Tu	We	Th	Fr	Sa	Su	Mo	Tu	We	Th	Fr	Sa	Su	Mo	Tu	We	Th	Fr	Sa	Su	Mo	Tu	We	Th
Occupancy (%)	December																														
My Property	33.3	41.0	29.5	76.9	82.1	24.4	23.1	17.9	14.1	19.2	37.2	34.6	19.2	24.4	29.5	35.9	44.9	37.2	75.6	34.6	39.7	38.5	38.5	26.9	33.3	47.4	38.5	30.8	32.1	38.5	47.4
Competitive Set	32.3	25.6	32.0	51.9	58.8	22.3	23.1	23.6	28.0	27.0	33.0	37.7	22.3	26.1	23.3	20.6	25.1	32.0	37.7	21.3	24.1	20.8	18.4	21.8	29.3	34.5	21.1	21.3	23.1	23.6	34.2
Index (MPI)	103.3	160.5	92.1	148.3	139.5	109.1	100.0	76.1	50.3	71.1	112.7	91.8	86.1	93.5	126.4	174.3	179.0	116.1	200.5	162.2	165.1	184.5	209.5	123.3	113.8	137.5	182.4	144.2	138.9	163.2	138.5

% Chg																															
My Property																															
Competitive Set	3.2	-34.0	-22.3	45.1	33.1	-18.9	-33.6	-26.9	-17.5	-9.2	-21.8	-12.1	7.1	1.0	-13.7	-32.0	-16.5	-20.9	-16.5	-18.9	9.0	7.7	-20.4	-41.7	-31.0	-17.3	-17.5	-23.2	-43.6	11.8	29.0
Index (MPI)																															

	1	2	3	4	5	6	7	8	9	10	11	12	13	14	15	16	17	18	19	20	21	22	23	24	25	26	27	28	29	30	31
ADR	December																														
My Property	54.87	55.28	50.99	55.88	57.37	59.80	51.10	51.36	56.65	52.81	59.51	57.16	61.97	60.53	52.60	45.69	43.66	55.44	49.35	46.62	49.01	50.88	48.71	57.43	59.66	57.71	40.69	44.23	45.13	49.13	56.97
Competitive Set	53.72	49.22	53.11	62.89	61.66	52.92	53.29	54.94	54.22	54.76	56.32	56.98	51.34	52.39	54.70	53.28	50.31	55.76	56.81	52.78	55.29	54.57	51.69	57.37	57.87	56.82	52.50	54.48	53.59	54.31	56.52
Index (ARI)	102.1	112.3	96.0	88.9	93.0	113.0	95.9	93.5	104.5	96.4	105.7	100.3	120.7	115.5	96.2	85.8	86.8	99.4	86.9	88.3	88.6	93.2	94.2	100.1	103.1	101.5	77.5	81.2	84.2	90.5	100.8

% Chg																															
My Property																															
Competitive Set	0.6	-10.4	-2.1	15.4	8.8	3.8	1.6	3.8	6.3	3.8	6.0	-2.8	-1.8	-2.7	3.9	0.9	-8.9	-3.8	0.1	-5.6	2.7	1.6	-1.5	1.2	0.4	-6.7	-7.1	5.9	2.8	0.6	3.5
Index (ARI)																															

	1	2	3	4	5	6	7	8	9	10	11	12	13	14	15	16	17	18	19	20	21	22	23	24	25	26	27	28	29	30	31
RevPAR	December																														
My Property	18.29	22.68	15.04	42.99	47.07	14.57	11.79	9.22	7.99	10.16	22.12	19.79	11.92	14.75	15.51	16.40	19.59	20.61	37.33	16.14	19.48	19.57	18.74	15.46	19.89	27.37	15.65	13.61	14.47	18.90	27.03
Competitive Set	17.33	12.58	17.00	32.61	36.26	11.82	12.30	12.95	15.20	14.81	18.59	21.49	11.47	13.65	12.76	10.97	12.61	17.85	21.43	11.26	13.31	11.38	9.49	12.53	16.95	19.60	11.07	11.63	12.37	12.80	19.36
Index (RGI)	105.5	180.3	88.4	131.8	129.8	123.3	95.9	71.2	52.5	68.6	119.0	92.1	103.9	108.0	121.5	149.5	155.4	115.5	174.2	143.3	146.4	172.0	197.4	123.4	117.4	139.7	141.3	117.0	117.0	147.6	139.6

% Chg																															
My Property																															
Competitive Set	3.7	-40.8	-23.9	67.5	44.9	-15.9	-32.5	-24.1	-12.3	-5.7	-17.1	-14.6	5.2	-1.8	-10.4	-31.3	-23.9	-23.8	-16.4	-23.4	11.9	9.5	-21.6	-41.0	-30.7	-22.8	-23.3	-18.7	-42.0	12.5	33.5
Index (RGI)																															

This STR Report is a publication of STR, LLC and STR Global, Ltd. CoStar Group companies, and is intended solely for use by paid subscribers. The information in the STR Report is provided on an "as is" and "as available" basis and should not be construed as investment, tax, accounting or legal advice. Reproduction or distribution of this STR Report, in whole or part, without written permission is prohibited and subject to legal action. If you have received this report and are NOT a subscriber to this STR Report, please contact us immediately. Source: 2021 STR, LLC / STR Global, Ltd. Trading as "STR". © CoStar Realty Information, Inc.



How can we assist you?

Glossary:

For all STR definitions, please click here or visit www.str.com/data-insights/resources/glossary

Frequently Asked Questions (FAQ):

For all STR FAQs, please click here or visit www.str.com/data-insights/resources/FAQ

For additional support, please [contact](#) your regional office.

For the latest in industry news, visit HotelNewsNow.com.

To learn more about the Hotel Data Conference, visit HotelDataConference.com.