

CIVIC EXECUTIVE PARK

1470 Civic Court, Concord



Civic Executive Park

Up to ±9,695 RSF of Contiguous Space

Space Available

Suite 300:	±1,742 RSF	Suite 310:	±1,303 RSF	Suite 312:	±1,632 RSF
Suite 309:	±1,803 RSF	Suite 311:	±1,200 RSF	Suite 320:	±2,015 RSF
				Suite 360:	±1,807 RSF

**Newmark
Knight Frank**

Contact Exclusive Agents

ALEX GRELL Sr. Managing Director
agrell@newmarkccarey.com | 925.974.0108
CA RE License #01222891

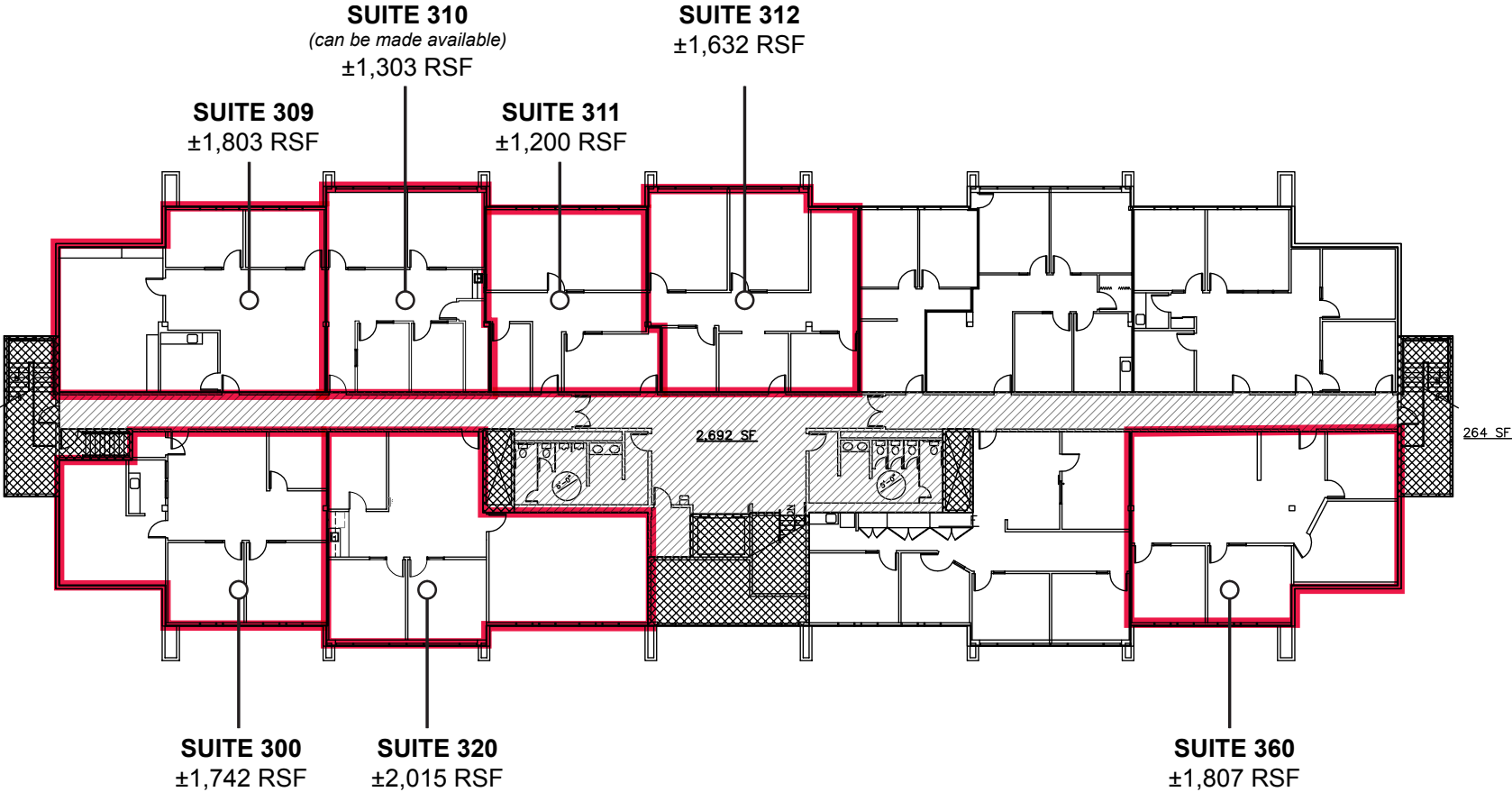
KEVIN BEAUMONTE Associate
kbeaumonte@newmarkccarey.com | 925.460.9291
CA RE License #01941161

CIVIC EXECUTIVE PARK

1470 Civic Court, Concord



FLOOR PLATE Third Floor



**Newmark
Knight Frank**

Contact Exclusive Agents

ALEX GRELL Sr. Managing Director
agrell@newmarkccarey.com | 925.974.0108
CA RE License #01222891

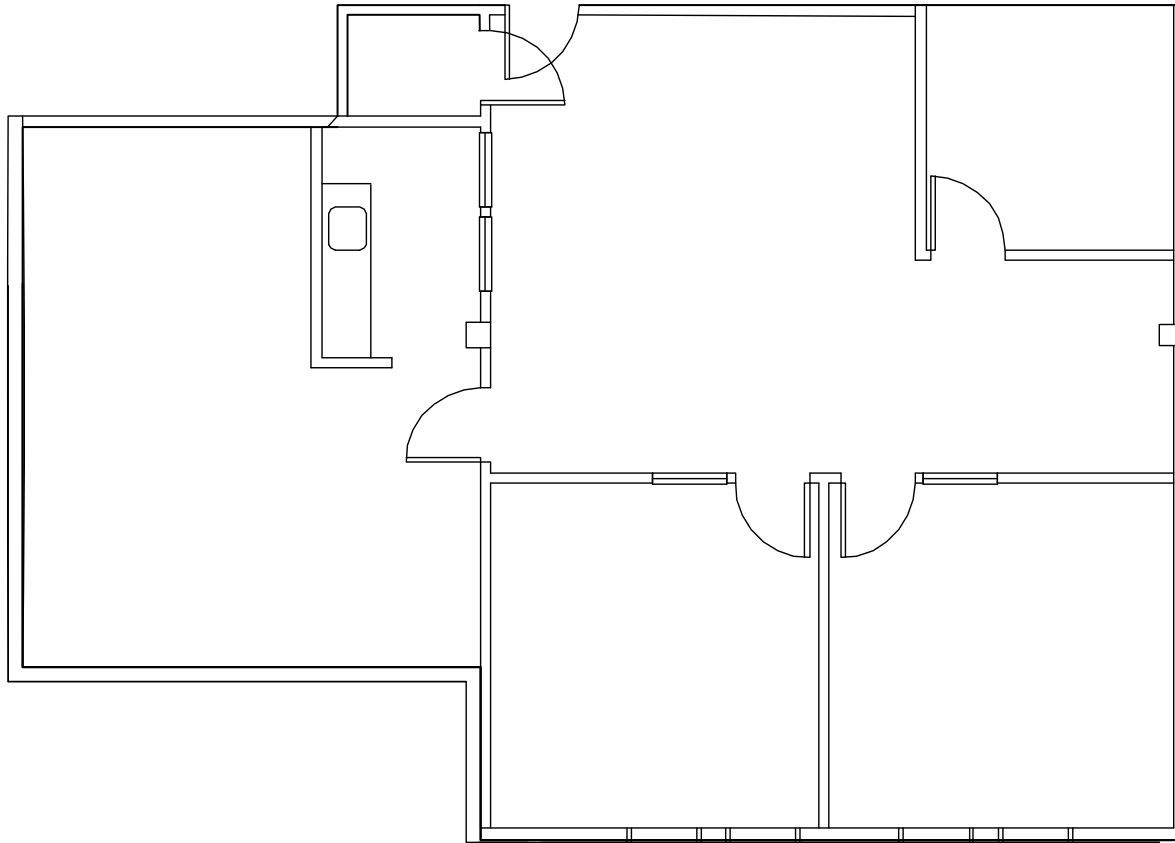
KEVIN BEAUMONTE Associate
kbeaumonte@newmarkccarey.com | 925.460.9291
CA RE License #01941161

CIVIC EXECUTIVE PARK

1470 Civic Court, Concord



SUITE 300
±1,742 RSF



Newmark
Knight Frank

Contact Exclusive Agents

ALEX GRELL Sr. Managing Director
agrell@newmarkccarey.com | 925.974.0108
CA RE License #01222891

KEVIN BEAUMONTE Associate
kbeaumonte@newmarkccarey.com | 925.460.9291
CA RE License #01941161

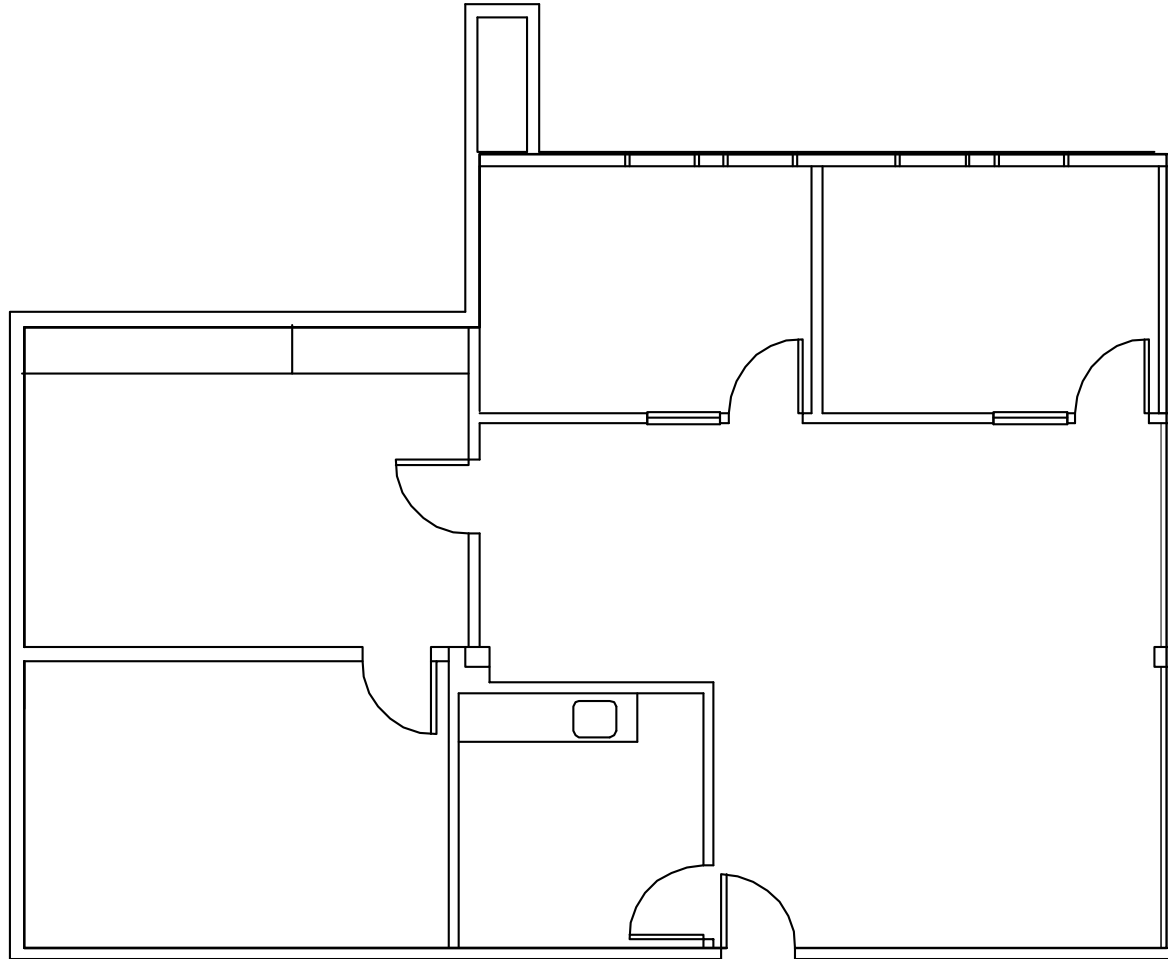
CIVIC EXECUTIVE PARK

1470 Civic Court, Concord



SUITE 309

±1,803 RSF



**Newmark
Knight Frank**

Contact Exclusive Agents

ALEX GRELL Sr. Managing Director
agrell@newmarkccarey.com | 925.974.0108
CA RE License #01222891

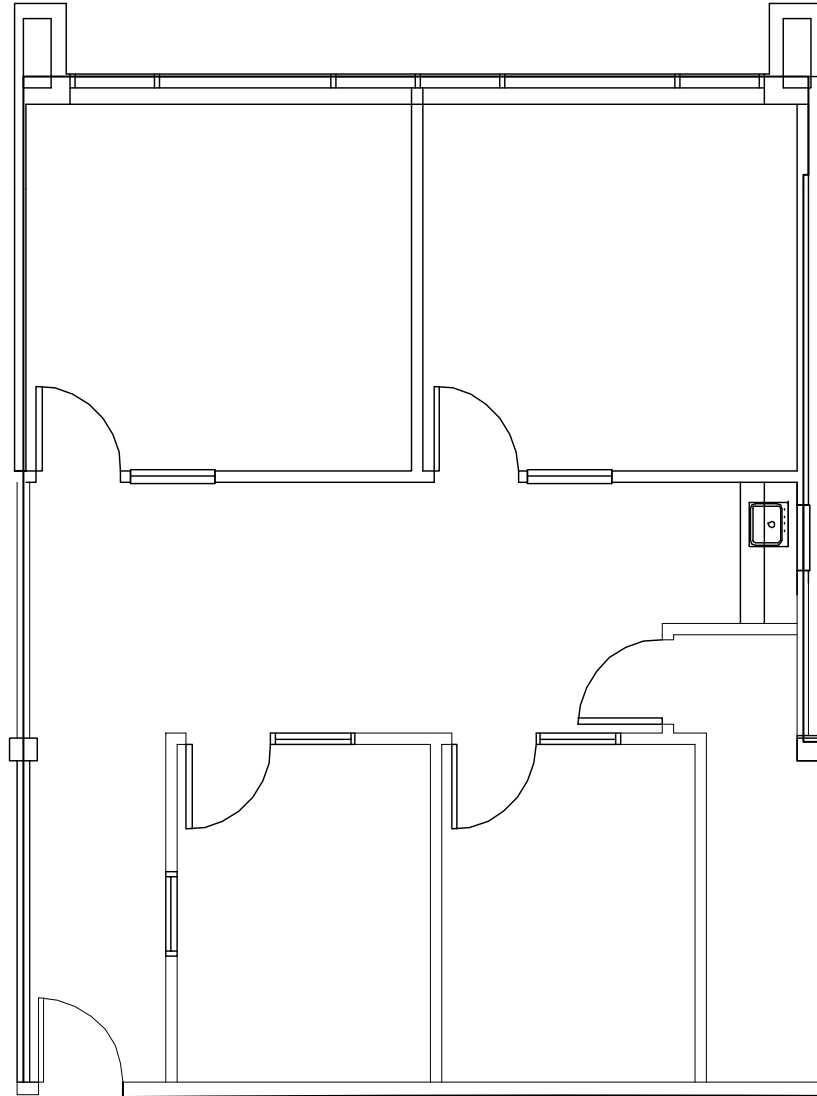
KEVIN BEAUMONTE Associate
kbeaumonte@newmarkccarey.com | 925.460.9291
CA RE License #01941161

CIVIC EXECUTIVE PARK

1470 Civic Court, Concord



SUITE 310
±1,303 RSF



Newmark
Knight Frank

Contact Exclusive Agents

ALEX GRELL Sr. Managing Director
agrell@newmarkccarey.com | 925.974.0108
CA RE License #01222891

KEVIN BEAUMONTE Associate
kbeaumonte@newmarkccarey.com | 925.460.9291
CA RE License #01941161

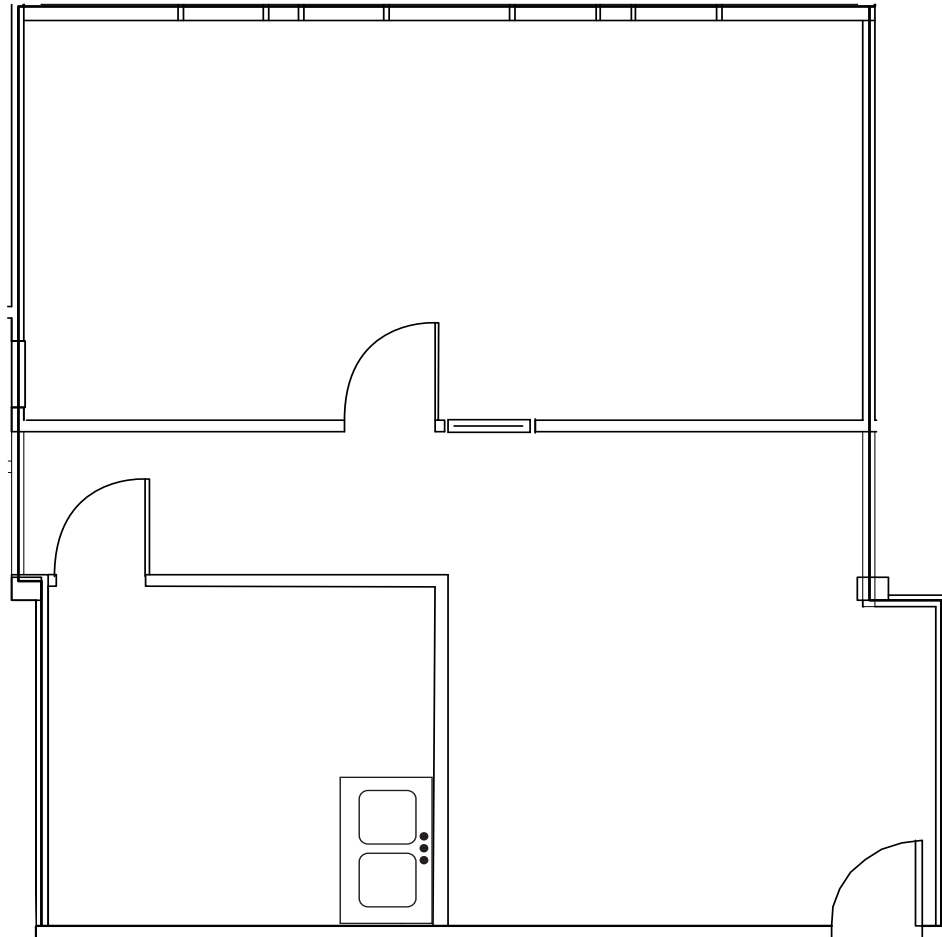
CIVIC EXECUTIVE PARK

1470 Civic Court, Concord



SUITE 311

±1,200 RSF



**Newmark
Knight Frank**

Contact Exclusive Agents

ALEX GRELL Sr. Managing Director
agrell@newmarkccarey.com | 925.974.0108
CA RE License #01222891

KEVIN BEAUMONTE Associate
kbeaumont@newmarkccarey.com | 925.460.9291
CA RE License #01941161

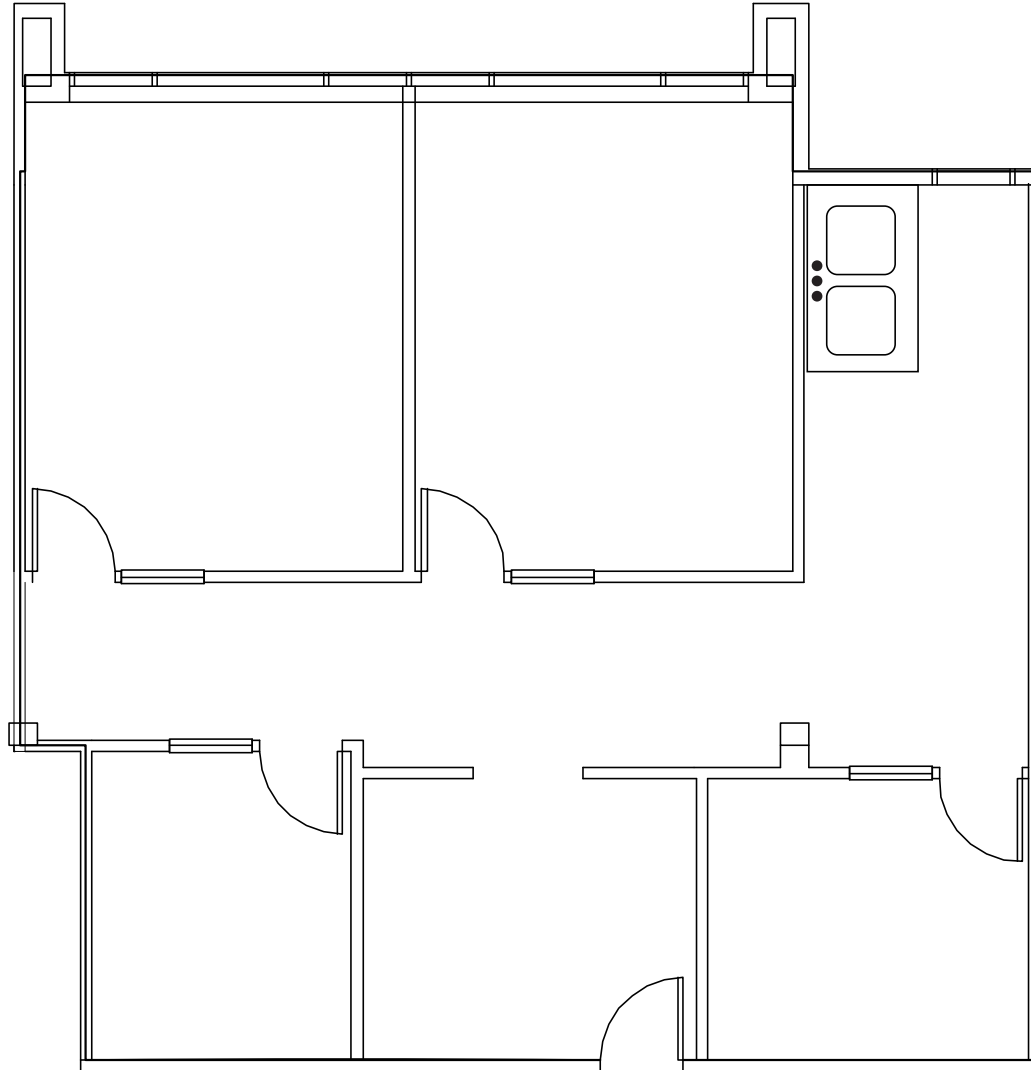
CIVIC EXECUTIVE PARK

1470 Civic Court, Concord



SUITE 312

±1,632 RSF



**Newmark
Knight Frank**

Contact Exclusive Agents

ALEX GRELL Sr. Managing Director
agrell@newmarkccarey.com | 925.974.0108
CA RE License #01222891

KEVIN BEAUMONTE Associate
kbeaumonte@newmarkccarey.com | 925.460.9291
CA RE License #01941161

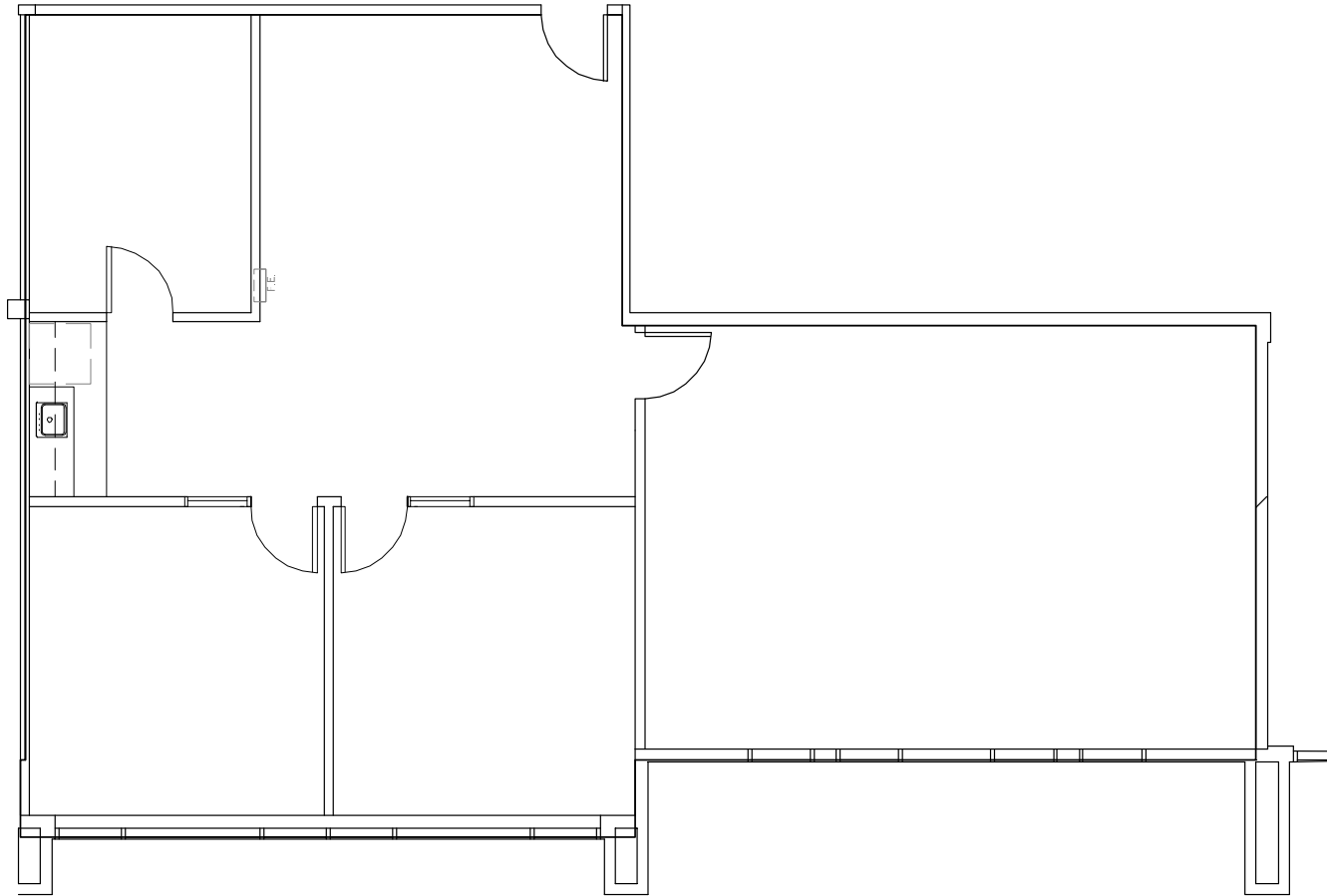
CIVIC EXECUTIVE PARK

1470 Civic Court, Concord



SUITE 320

±2,015 RSF



**Newmark
Knight Frank**

Contact Exclusive Agents

ALEX GRELL Sr. Managing Director
agrell@newmarkccarey.com | 925.974.0108
CA RE License #01222891

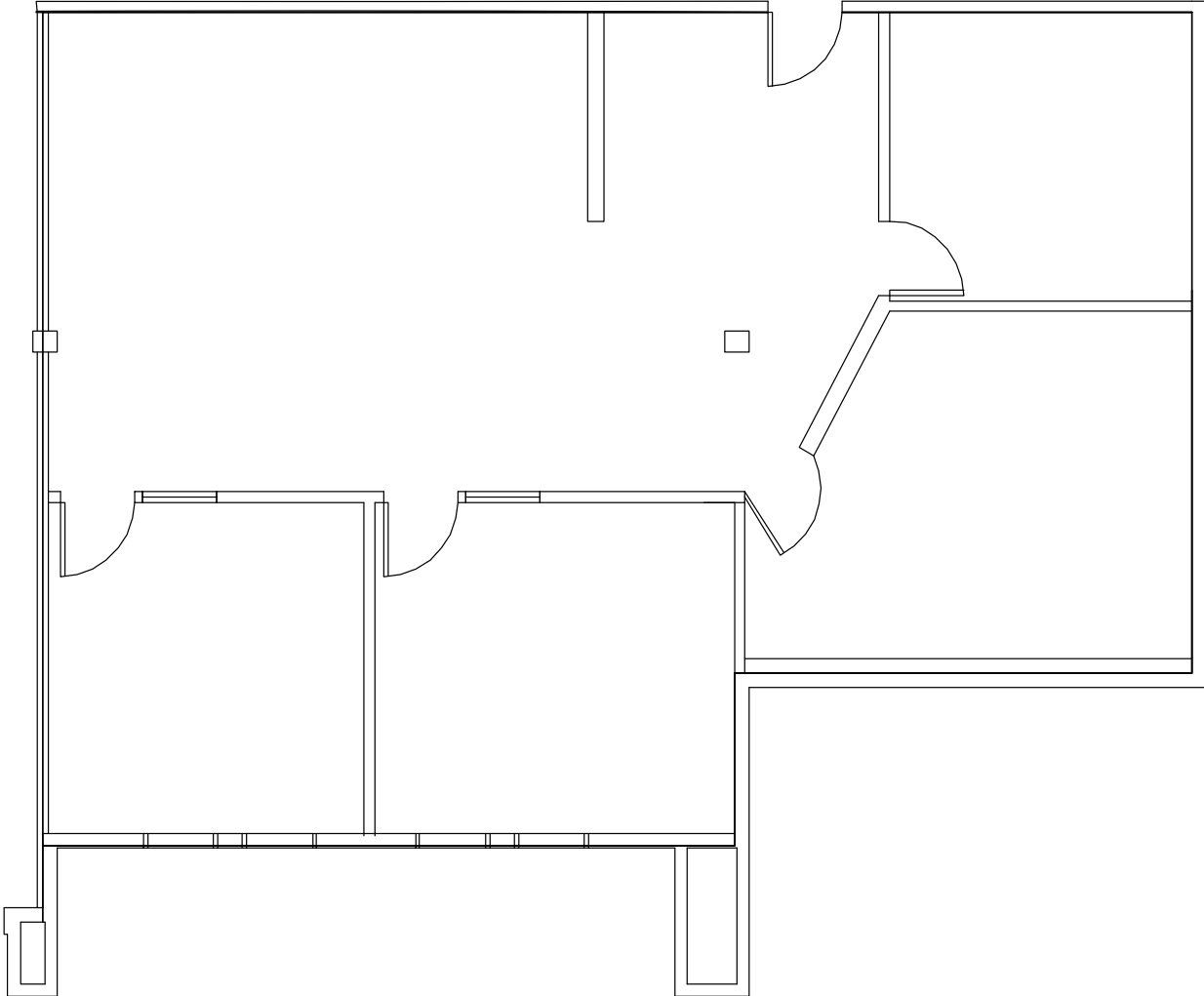
KEVIN BEAUMONTE Associate
kbeaumonte@newmarkccarey.com | 925.460.9291
CA RE License #01941161

CIVIC EXECUTIVE PARK

1470 Civic Court, Concord



SUITE 360
±1,807 RSF



**Newmark
Knight Frank**

Contact Exclusive Agents

ALEX GRELL Sr. Managing Director
agrell@newmarkccarey.com | 925.974.0108
CA RE License #01222891

KEVIN BEAUMONTE Associate
kbeaumonte@newmarkccarey.com | 925.460.9291
CA RE License #01941161

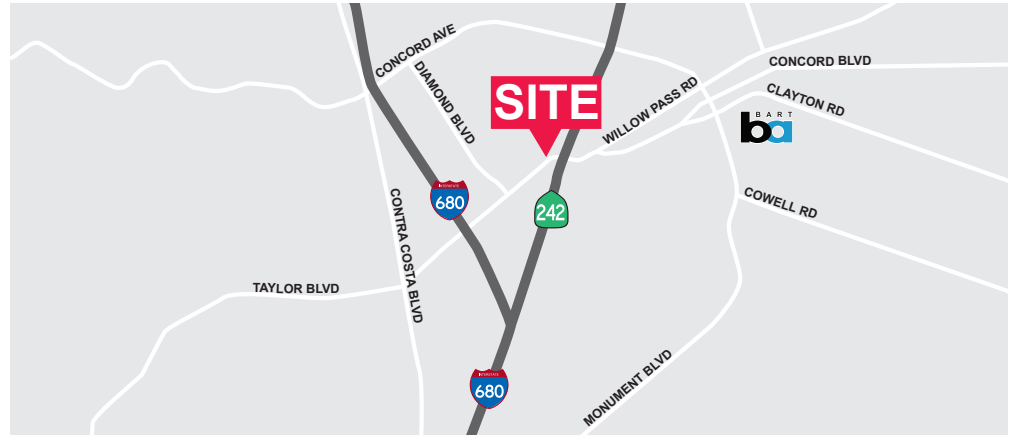
CIVIC EXECUTIVE PARK

1470 Civic Court, Concord



PROJECT HIGHLIGHTS

- ◆ Located at 1470 Civic Court, Civic Executive Park consists of a three story office building totaling approximately 51,048 square feet and situated on 1.52 acres. Parking is plentiful and is evenly distributed around the project.
- ◆ The Property is centrally located off of highly trafficked Willow Pass Road, with easy access to Interstate 680, Highway 242 and Highway 4.
- ◆ The Property benefits from exceptional proximity to retail and service amenities due to its location just a few blocks from Sun Valley Mall, the popular Willow Shopping Center and the new Veranda Shopping Center.



Newmark
Knight Frank

Contact Exclusive Agents

ALEX GRELL Sr. Managing Director
agrell@newmarkccarey.com | 925.974.0108
CA RE License #01222891

KEVIN BEAUMONTE Associate
kbeaumonte@newmarkccarey.com | 925.460.9291
CA RE License #01941161