



PARK WEST



1501-1507 LBJ FREEWAY | DALLAS, TX



PARK WEST 1&2

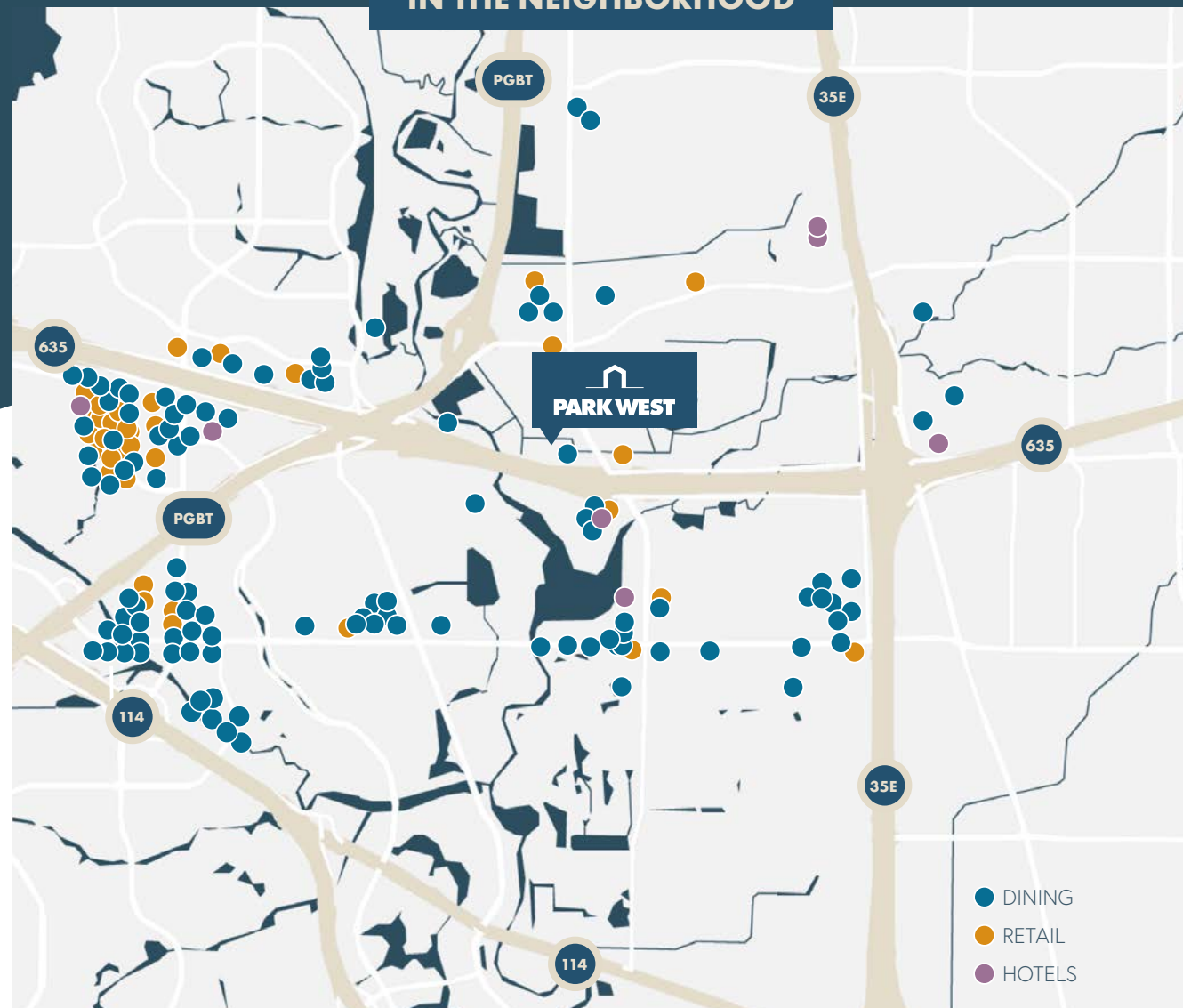
HIGHLIGHTS

-  4/1000 structured parking (visitor parking available)
-  EV Charging Stations
-  125-person conference room
-  Fitness center with locker rooms
-  Outdoor walking trail
-  On-site cafe serving breakfast and lunch
-  Full coffee bar, proudly serving Starbucks coffee
-  Wi-fi available in common areas
-  Close proximity to dining, retail and hotel options
-  Direct access to LBJ Freeway and PGBT
-  Building and monument signage available (for qualified tenants)

PARK WEST 1 & 2 IS A TWO-BUILDING PROJECT LOCATED AT 1501, 1503, 1505, AND 1507 LBJ FREEWAY (I-635) — MINUTES FROM DFW INTERNATIONAL AIRPORT, DOWNTOWN DALLAS, THE LAS COLINAS BUSINESS DISTRICT, AND NUMEROUS AMENITIES.

Area AMENITIES

IN THE NEIGHBORHOOD

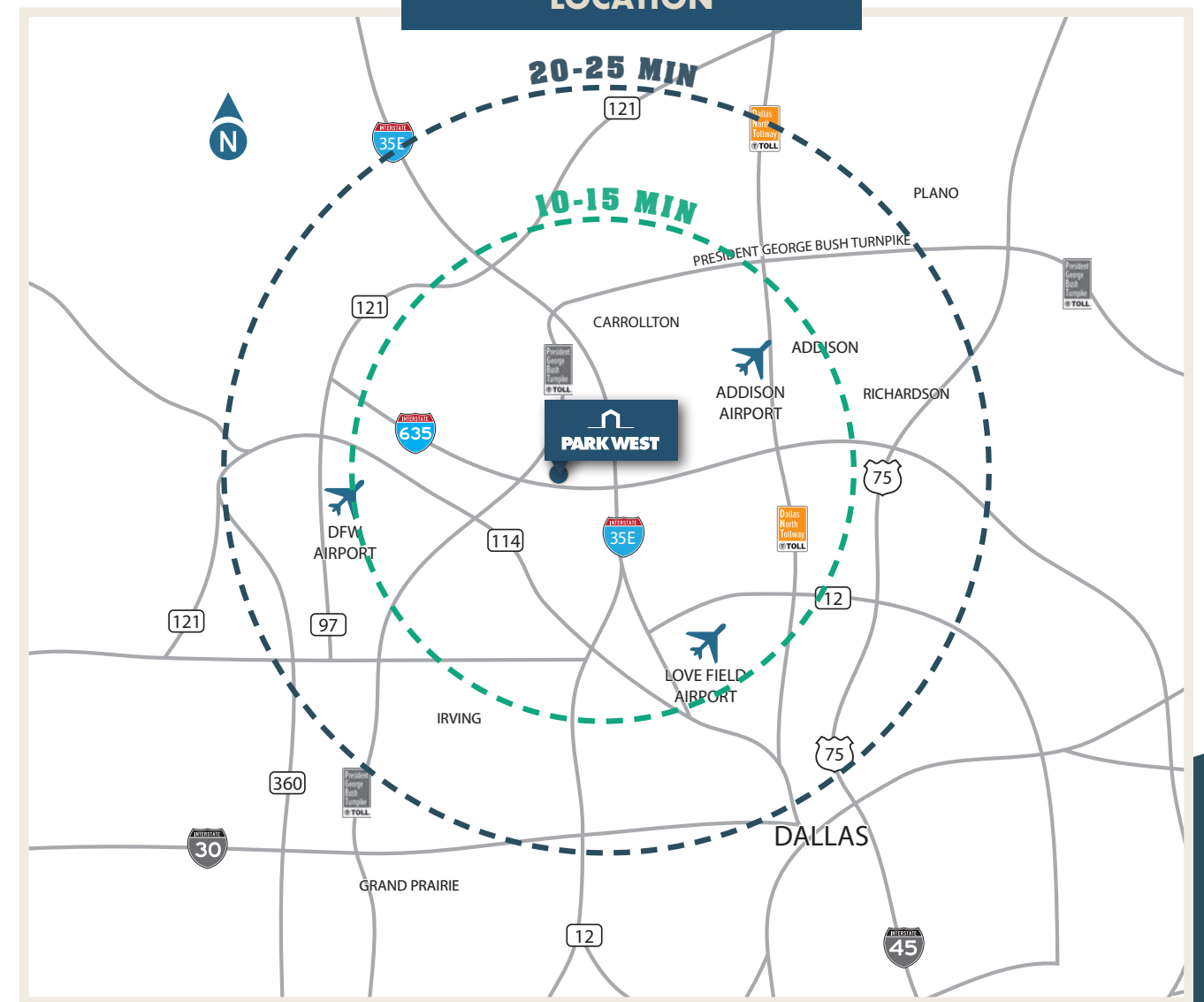


75+
DINING

30+
RETAIL

10+
HOTELS

LOCATION



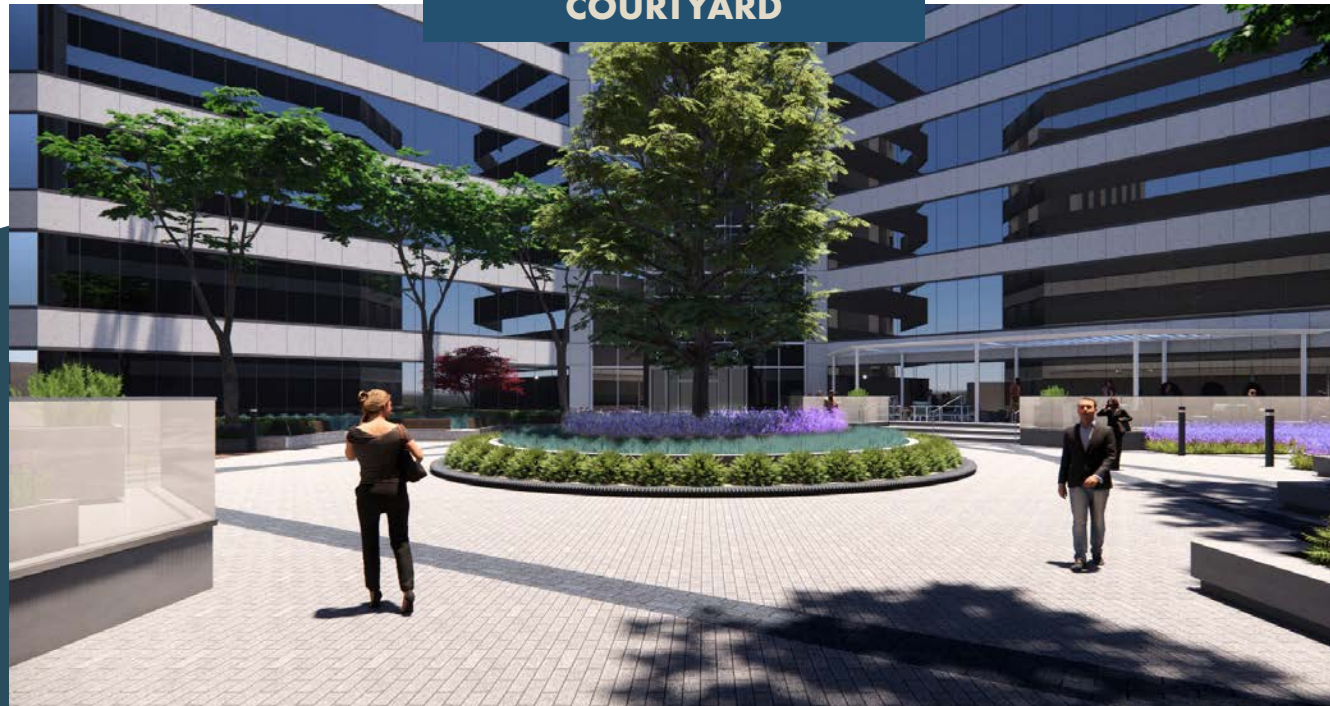
CENTRAL DFW LOCATION

10-15 MINUTES FROM MAJOR AIRPORTS

CORNER OF I-635, PGBT AND I-35

Upcoming
RENOVATIONS

COURTYARD



OUTDOOR DINING



LOBBY



OUTDOOR LOUNGE



Upcoming **RENOVATIONS**

CAFE



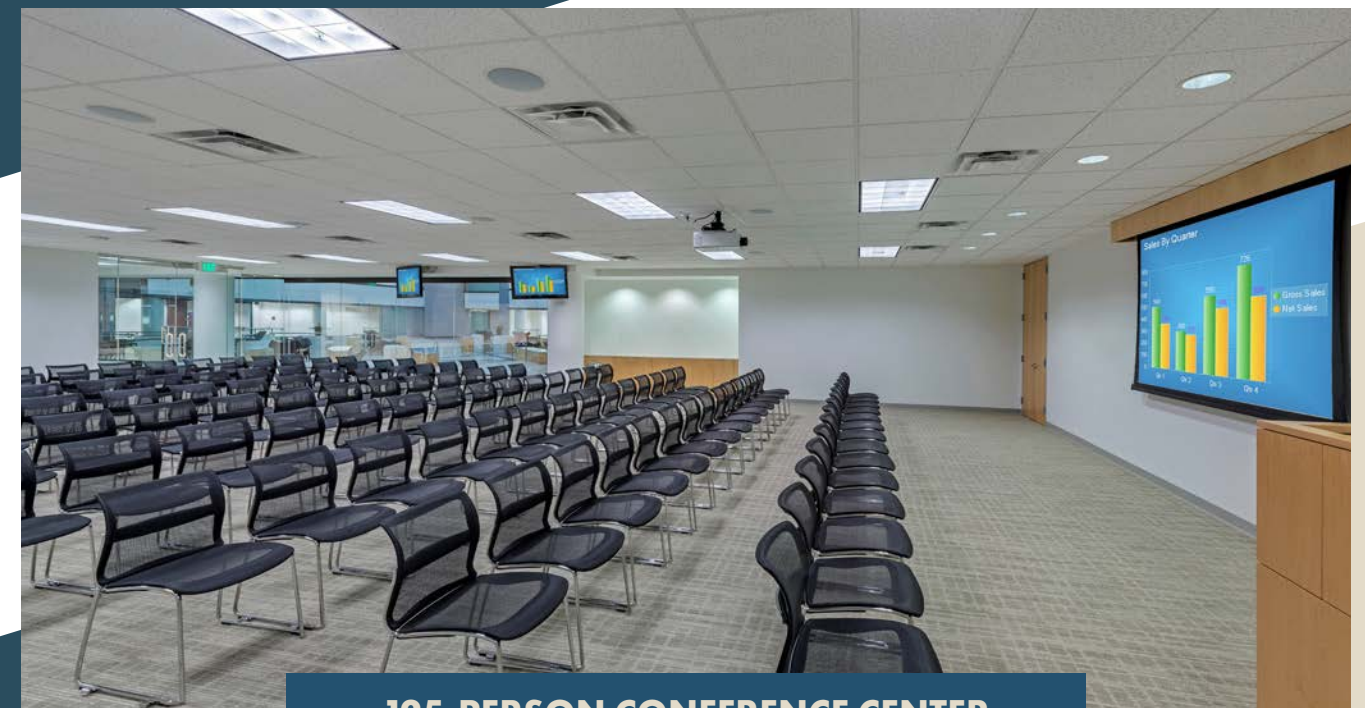
STARBUCKS COFFEE BAR + GRAB-AND-GO



CAFE



125-PERSON CONFERENCE CENTER



Updated
FITNESS CENTER

FITNESS CENTER



LOCKER ROOMS





PARK WEST

Taylor Lynch
972.435.0514

tlynch@forgecommercial.com

Grant Sumner
972.435.0511

gsumner@forgecommercial.com

Jackson Donovan
972.435.0507

jdonovan@forgecommercial.com

