

FOR SALE

**1211 N. CHESTER STREET
BALTIMORE MD 21213**

PROPERTY SUMMARY

GROSS BUILDING AREA:

Floor 2: 4,200 SF

Floor 1: 4,200 SF

Lower Level: 1,945 SF

Total GBA: 10,345 SF

LAND PARCEL: 5,009 SF

NEIGHBORHOOD: Broadway East

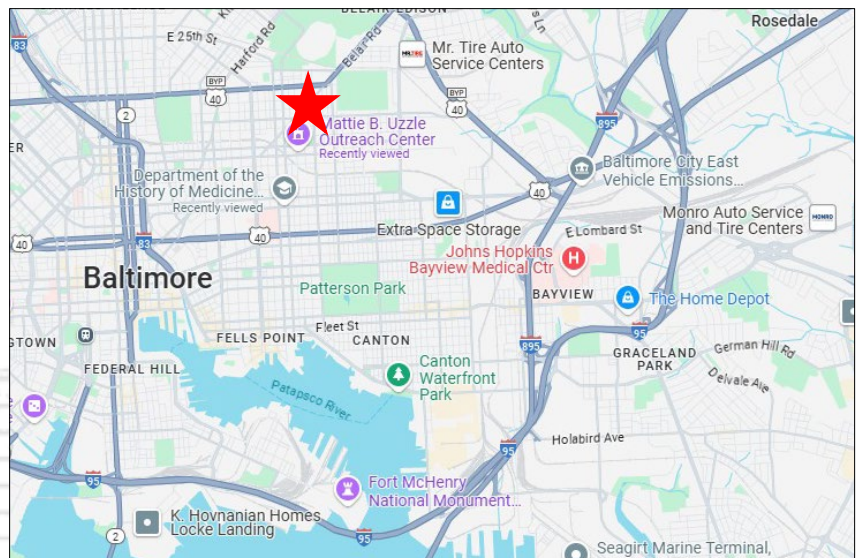
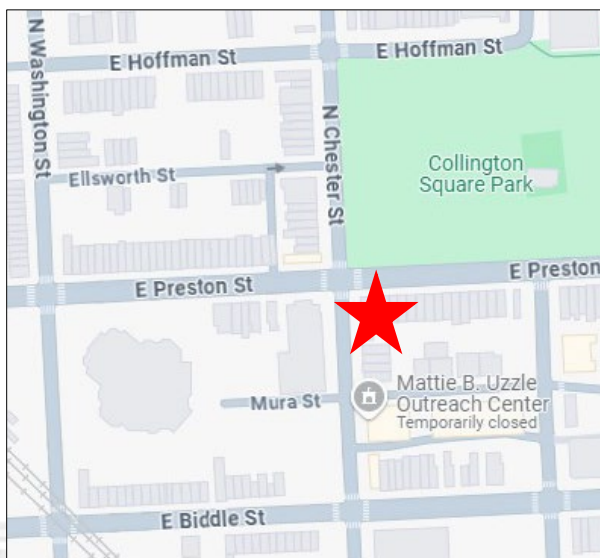
YEAR BUILT: 1994

FINISHED FLOORS: 3

ZONING: R-8

HVAC: Central

UTILITIES: Electric, Gas, Municipal
water & sewer, Verizon, Comcast



DOUGLAS R. KINGTON
Broker/Co-Owner
(410) 630-1240 x1
doug@crelogic.net

RE/MAX
COMMERCIAL®

WENDY L. BLAIR
Managing Director
(410) 630-1240 x2
wendy@crelogic.net

Disclaimer: While REMAX Commercial Logic has relied upon sources that it reasonably believes are reliable, RE/MAX Commercial Logic makes no representations or warranty, express or implied, as to the accuracy of the information contained herein. This document is submitted subject to errors, omissions, change of price and other conditions, and withdrawal without notice as imposed by our principals. Each Office Independently Owned and Operated.

PROPERTY INFO.

PROPERTY ADDRESS:	1211 North Chester Street, Baltimore, Maryland 21213
TAX ID:	08-14-1534-033
OWNER:	Israel Baptist Church of Baltimore City, Inc.
COMMUNITY:	Broadway East
GROSS BUILDING AREA:	10,345 SF
LAND PARCEL:	5,009 SF (0.115 acres)
BUILT :	1994
HEIGHT:	Three (3)
CONSTRUCTION:	Brick and masonry block walls, steel frame, pan-deck concrete floors
ZONING:	R-8
CURRENT USE:	Office
PARKING:	None on-site. Plentiful on-street, unmetered parking spaces.

Radius	1 - Mile	2 - Mile	Radius	1 - Mile	2 - Mile
<u>Population</u>			<u>2024 HH Income</u>		
2020 Census	38,110	141,031	Average	\$57,958	\$81,980
2024 Population	45,682	142,072	Median	\$39,982	\$56,867
2029 Projection	47,232	139,252			
<u>Households</u>			<u>2024 Race & Ethnicity</u>		
2020 Census	15,472	65,479	Black	35,956	77,910
2024 Households	18,503	65,476	White	4,501	42,341
2029 Projection	19,096	63,831	Asian	763	4,642
			2 or More Races	4,282	16,513
			Hispanic Origin	3,168	12,696

DOUGLAS R. KINGTON
Broker/Co-Owner
(410) 630-1240 x1
doug@crelogic.net

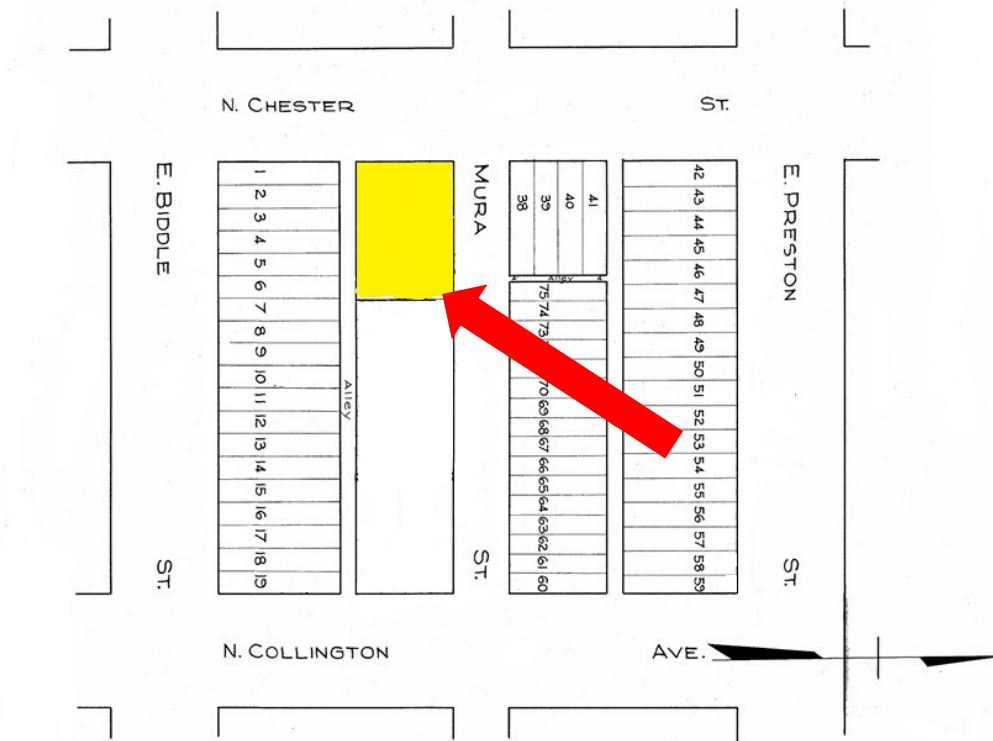


WENDY L. BLAIR
Managing Director
(410) 630-1240 x2
wendy@crelogic.net

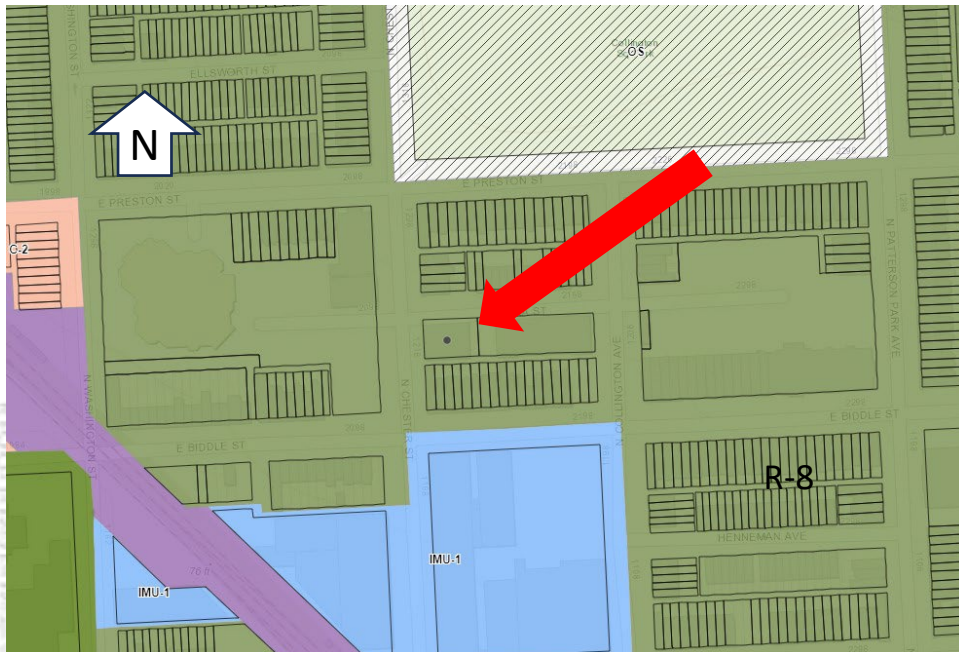
Disclaimer: While REMAX Commercial Logic has relied upon sources that it reasonably believes are reliable, RE/MAX Commercial Logic makes no representations or warranty, express or implied, as to the accuracy of the information contained herein. This document is submitted subject to errors, omissions, change of price and other conditions, and withdrawal without notice as imposed by our principals. Each office independently owned and operated.

FLOOR PLANS

BLOCK PLAT



ZONING MAP



DOUGLAS R. KINGTON
 Broker/Co-Owner
 (410) 630-1240 x1
 doug@crelogic.net

RE/MAX
 COMMERCIAL®

WENDY L. BLAIR
 Managing Director
 (410) 630-1240 x2
 wendy@crelogic.net

Disclaimer: While REMAX Commercial Logic has relied upon sources that it reasonably believes are reliable, RE/MAX Commercial Logic makes no representations or warranty, express or implied, as to the accuracy of the information contained herein. This document is submitted subject to errors, omissions, change of price and other conditions, and withdrawal without notice as imposed by our principals. Each office independently owned and operated.

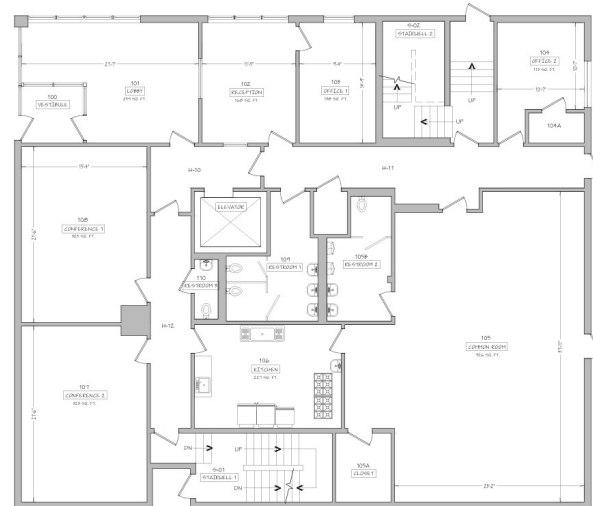
FLOOR PLANS

Floor 2



Main Entrance

Floor 1



Lower Level



Note: These floor plans are meant for illustrative purposes only. They are not drawn to scale and features shown on the floor plan may or may not exist and may or not convey.

DOUGLAS R. KINGTON
Broker/Co-Owner
(410) 630-1240 x1
doug@crelogic.net

RE/MAX
COMMERCIAL®

WENDY L. BLAIR
Managing Director
(410) 630-1240 x2
wendy@crelogic.net

Disclaimer: While REMAX Commercial Logic has relied upon sources that it reasonably believes are reliable, RE/MAX Commercial Logic makes no representations or warranty, express or implied, as to the accuracy of the information contained herein. This document is submitted subject to errors, omissions, change of price and other conditions, and withdrawal without notice as imposed by our principals. Each office independently owned and operated.

PHOTOGRAPHS



DOUGLAS R. KINGTON
Broker/Co-Owner
(410) 630-1240 x1
doug@crelogic.net

RE/MAX
COMMERCIAL®

WENDY L. BLAIR
Managing Director
(410) 630-1240 x2
wendy@crelogic.net

Disclaimer: While REMAX Commercial Logic has relied upon sources that it reasonably believes are reliable, RE/MAX Commercial Logic makes no representations or warranty, express or implied, as to the accuracy of the information contained herein. This document is submitted subject to errors, omissions, change of price and other conditions, and withdrawal without notice as imposed by our principals. Each office independently owned and operated.

PHOTOGRAPHS



DOUGLAS R. KINGTON
Broker/Co-Owner
(410) 630-1240 x1
doug@crelogic.net

RE/MAX
COMMERCIAL®

WENDY L. BLAIR
Managing Director
(410) 630-1240 x2
wendy@crelogic.net

Disclaimer: While REMAX Commercial Logic has relied upon sources that it reasonably believes are reliable, RE/MAX Commercial Logic makes no representations or warranty, express or implied, as to the accuracy of the information contained herein. This document is submitted subject to errors, omissions, change of price and other conditions, and withdrawal without notice as imposed by our principals. Each office independently owned and operated.