

# US-19 DEVELOPMENT | TAMPA MSA

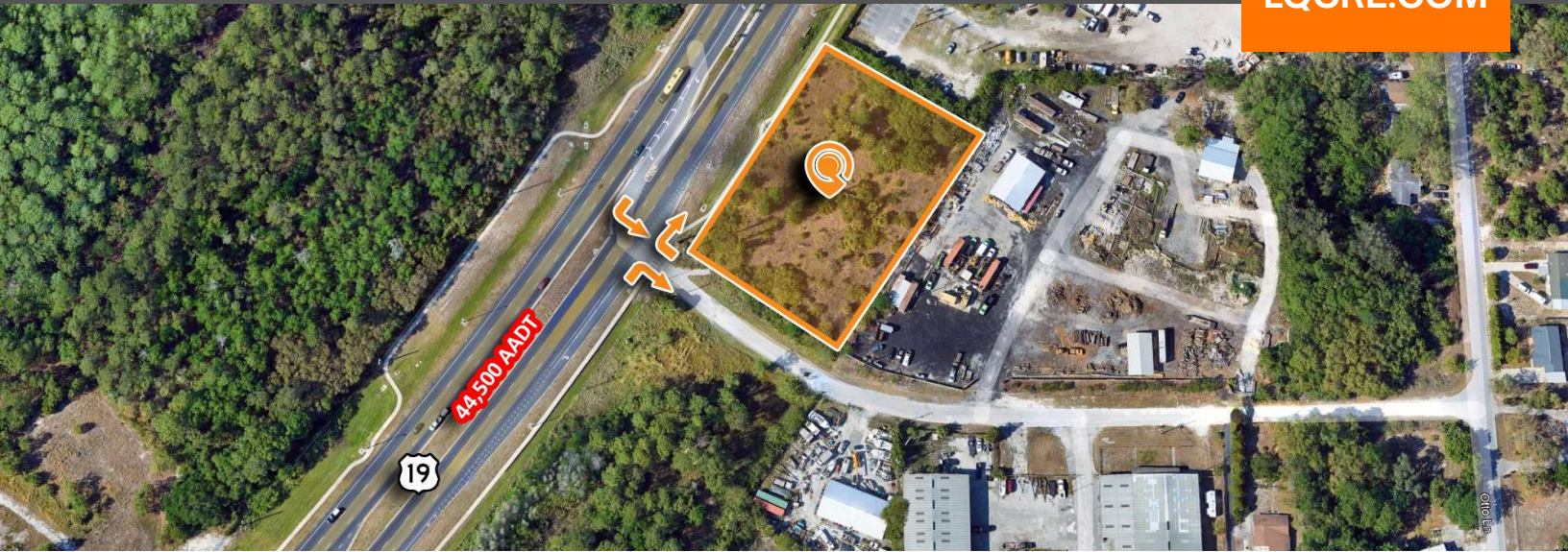
17128 U.S. 19 | Hudson, FL 34667

1.4 Acres | 44,500 Daily Traffic | Development Ready



**LQ Commercial**  
REAL ESTATE SERVICES

**LQCRE.COM**



**CALL FOR  
PRICE**



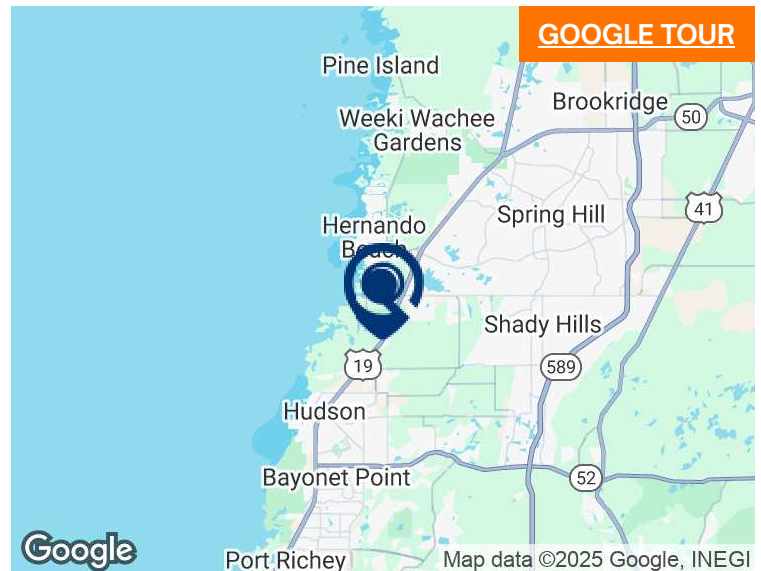
**1.4 ACRES  
SIZE**



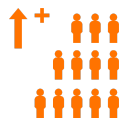
**C2  
ZONING**

- 1.4 AC development located off US-19 for sale in Pasco County
- Primary north-south thoroughfare
- High traffic count (44,500 VPD)- Ingress/egress
- C2 Zoning allows for multiple uses
- Growing population base (1.0%) and consumer market
- Minutes from residential neighborhoods (26K+ households) and waterfront communities

[PROPERTIES.LQCRE.COM/HUDSON19](https://PROPERTIES.LQCRE.COM/HUDSON19)



**5-MILE POPULATION  
59,047**



**5-YR POP. INCREASE  
1.0%**



**5-MILE AVG INCOME  
\$79,729**



**LQ Commercial**  
REAL ESTATE SERVICES

5601 Mariner St #220

Tampa, FL 33609

**LQCRE.COM**

**Paul Rutledge**

Senior Broker Associate

D: 813.999.1942

C: 941.228.2198

[prutledge@lqcre.com](mailto:prutledge@lqcre.com)

**Zachary Ellis**

Associate

D: 813.540.3320

C: 813.493.3437

[zellis@lqcre.com](mailto:zellis@lqcre.com)

Information obtained from owner(s) or other sources deemed reliable. We have no reason to doubt its accuracy, but cannot guarantee it. All properties subject to change or withdrawal without notice.



# US-19 DEVELOPMENT | TAMPA MSA

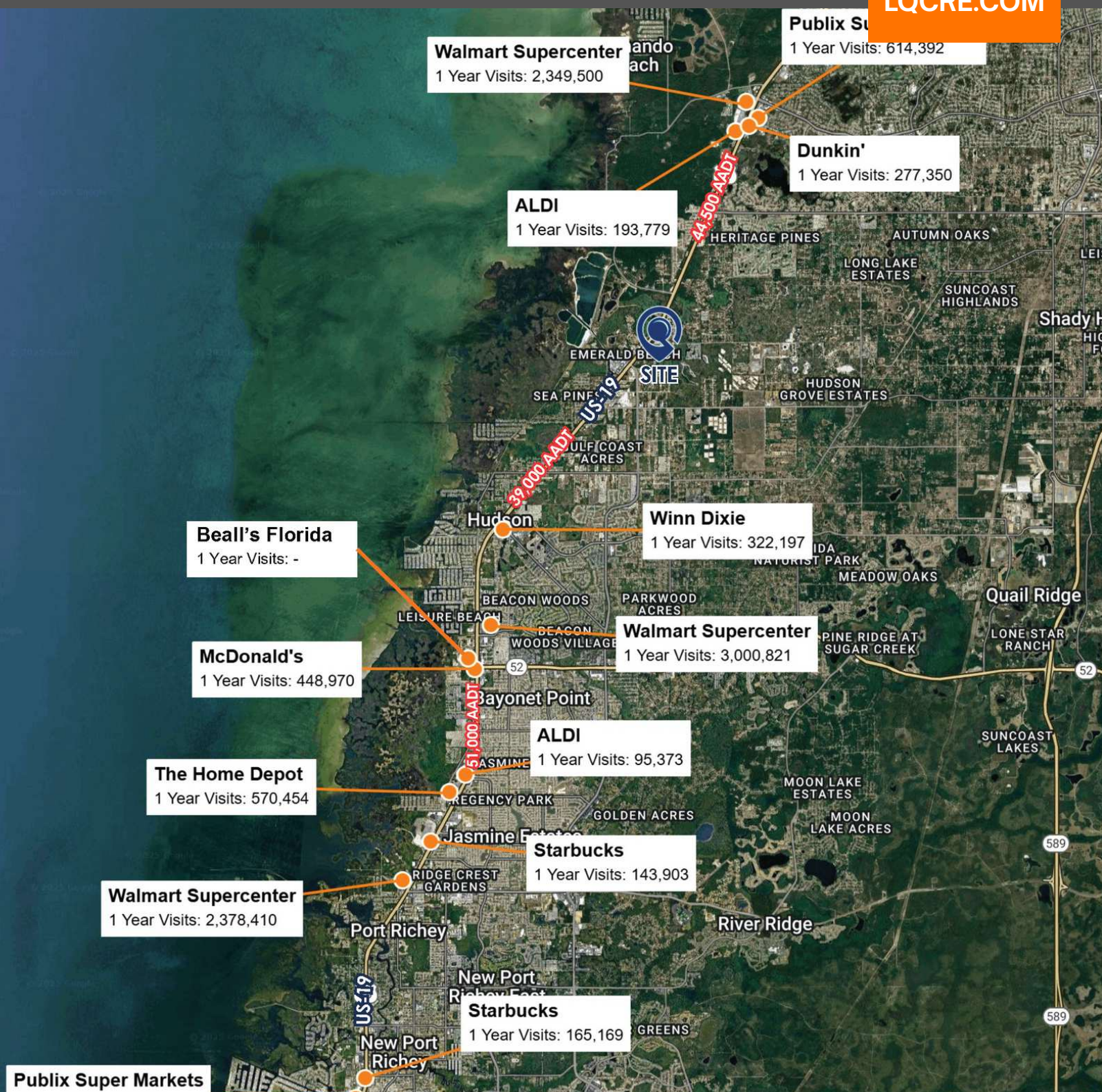
17128 U.S. 19 | Hudson, FL 34667

1.4 Acres | 44,500 Daily Traffic | Development Ready



**LQ Commercial**  
REAL ESTATE SERVICES

**LQCRE.COM**



**LQ Commercial**  
REAL ESTATE SERVICES

5601 Mariner St #220

Tampa, FL 33609

**LQCRE.COM**

**Paul Rutledge**

Senior Broker Associate

D: 813.999.1942

C: 941.228.2198

**prutledge@lqcre.com**

**Zachary Ellis**

Associate

D: 813.540.3320

C: 813.493.3437

**zellis@lqcre.com**

Information obtained from owner(s) or other sources deemed reliable. We have no reason to doubt its accuracy, but cannot guarantee it. All properties subject to change or withdrawal without notice.