

DORCHESTER VILLAGE

10150 Dorchester Road

Summerville, SC

RETAIL SPACE FOR LEASE



DETAILS

- Tenant Improvement: TBD
- Zoning: CG, Commercial General Dorchester County
- Expenses: Estimated CAM \$4.50/SF + Utilities
- Lease Rate: \$24.00 NNN
- Available Space: Units 201-206 - 10,069 Sf – End Cap
Units 219-221 - 5,608 SF
(Subdivision possible and is available upon request)

HIGHLIGHTS

- Dorchester Village Shopping Center is located at the Corner of Old Trolley Road and Dorchester Road, with ingress/egress on both.
- 2024 Avg. Daily Traffic Counts:
 - Dorchester Road – 43,000
 - Old Trolley Road – 30,500
- Landlord recently replaced the entire roof system and repainted the exterior of the center. Complete repair & restriping of parking lot to be completed by May, 2025.

For more information, contact :

Chip Warley 843.224.3277 chipwarley@gmail.com

The information contained herein has been obtained from sources deemed reliable but not warranted, guaranteed or represented as to the completeness for accuracy by Premier Properties of Charleston.

DORCHESTER VILLAGE 10150 Dorchester Road Summerville, SC



MAJOR RETAILERS WITHIN TWO MILE RADIUS



For more information, contact :

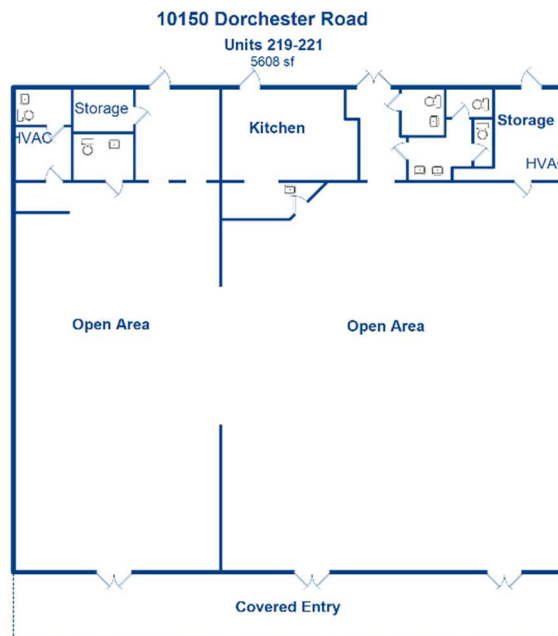
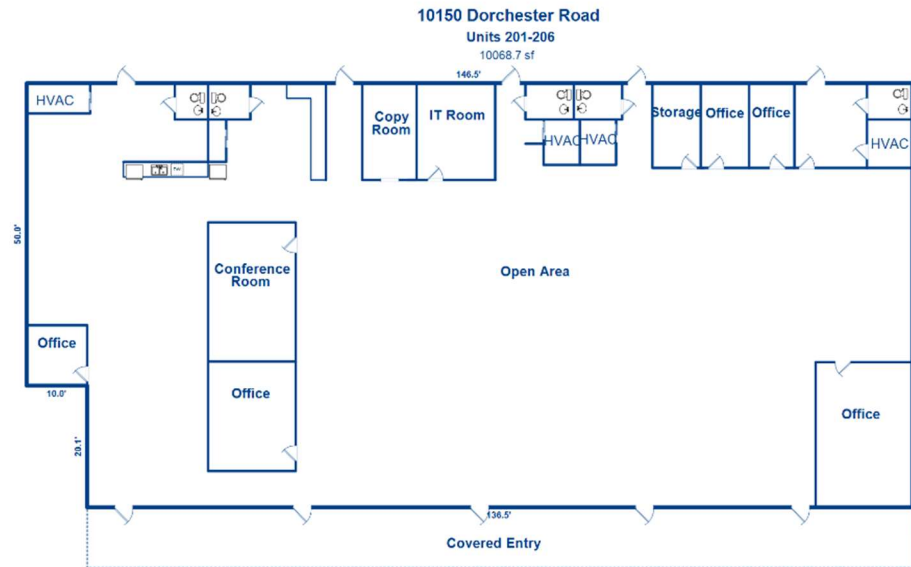
Chip Warley 843.224.3277 chipwarley@gmail.com

The information contained herein has been obtained from sources deemed reliable but not warranted, guaranteed or represented as to the completeness for accuracy by Premier Properties of Charleston.

DORCHESTER VILLAGE

10150 Dorchester Road

Summerville, SC



For more information, contact :

Chip Warley 843.224.3277 chipwarley@gmail.com

The information contained herein has been obtained from sources deemed reliable but not warranted, guaranteed or represented as to the completeness for accuracy by Premier Properties of Charleston.