



# Dana Blickley, CFA

Brevard County Property Appraiser



**North Government Complex**  
400 South St, 5th Floor  
Titusville, FL 32780  
Phone: (321) 264-6700  
Fax: (321) 264-6954

**Merritt Island Services Complex**  
2575 N Courtenay Pkwy  
Merritt Island, FL 32953  
Phone: (321) 454-6620  
Fax: (321) 454-6618

**Viera Government Center**  
2725 Judge Fran Jamieson Wy  
Viera, FL 32940  
Phone: (321) 690-6880  
Fax: (321) 690-6883

**South Services Complex**  
1515 Samo Rd  
Melbourne, FL 32935  
Phone: (321) 255-4440  
Fax: (321) 255-4439

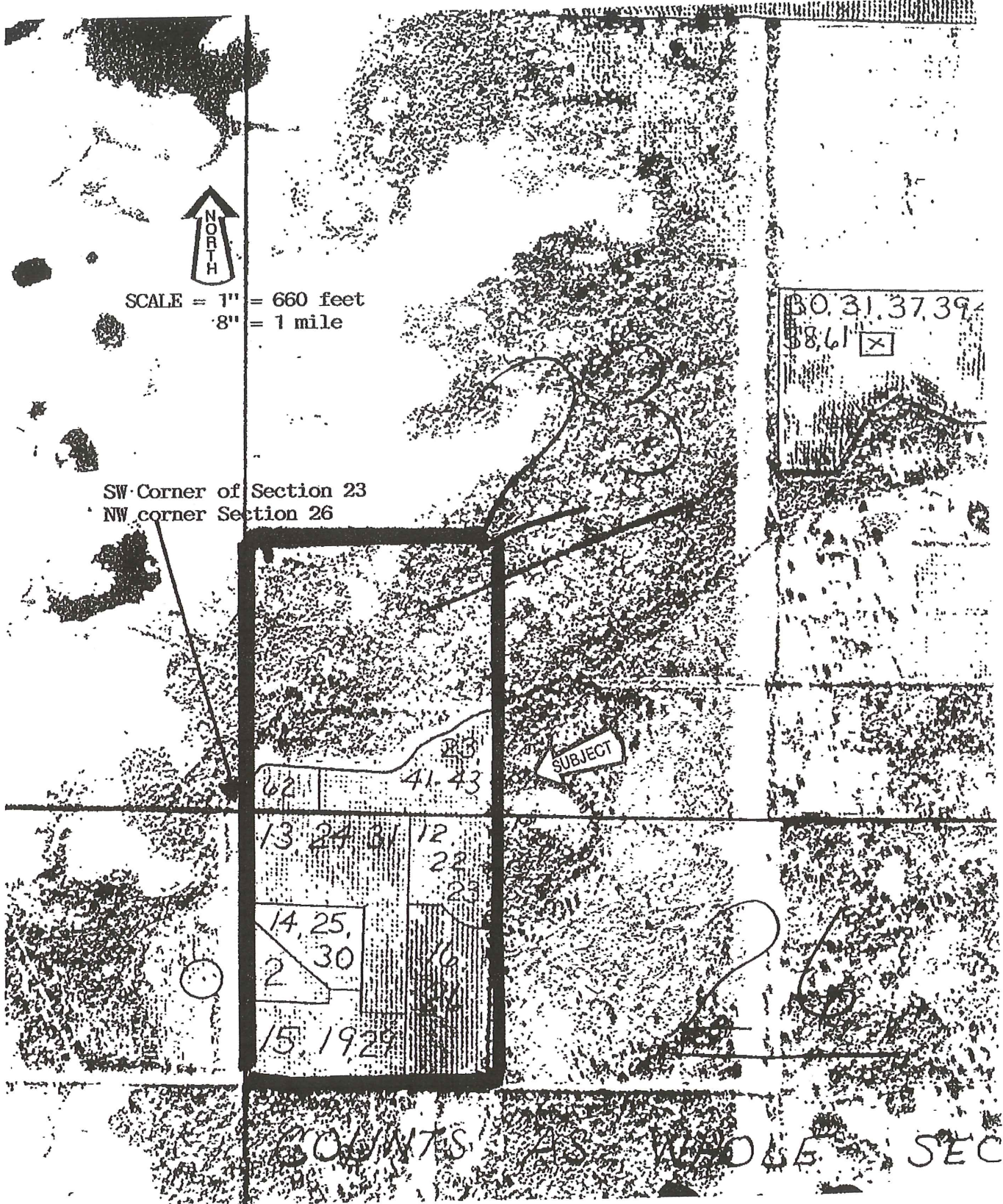
**Palm Bay Service Complex**  
450 Cogan Dr, SE  
Palm Bay, FL 32909  
Phone: (321) 952-4574  
Fax: (321) 952-4573

Document content intended for assessment purposes only. Not a survey. Map layers may not precisely align. Other disclaimers apply.

Printed Thursday, October 22, 2015 at 3:17 PM. [www.bcpao.us](http://www.bcpao.us)

1 : 4,000

AERIAL PHOTOGRAPH



SCALE = 1" = 660 feet  
8" = 1 mile

SW Corner of Section 23  
NW corner Section 26

30, 31, 37, 39  
38, 61 X

SUBJECT

62 41-43 23  
13 24 12 22 23  
14 25 2 30 16  
15 19 29

COUNTS AS WHOLE SEC