

675 E Hudson St.

Prime Retail Opportunity at 675 E Hudson St, Columbus, OH

Offering an exceptional opportunity to establish or expand your business in a high-visibility, high-traffic location.

+8,320 SF Available

+1.35 acres

+Zoning: 2113-2024, Mixed-Use(UCT)

+Prime Location: Situated in a bustling commercial corridor with excellent exposure and easy access to major highways, including I-71.

+Spacious Lot: 1.35 acres providing ample parking, outdoor display space, or potential for expansion.

+Standalone Building: Ideal for retail, showroom, restaurant, or specialty store.

+High Traffic & Visibility: Benefit from strong daily traffic counts and a growing local customer base.

+Versatile Zoning: Suitable for a variety of retail or service-oriented businesses.



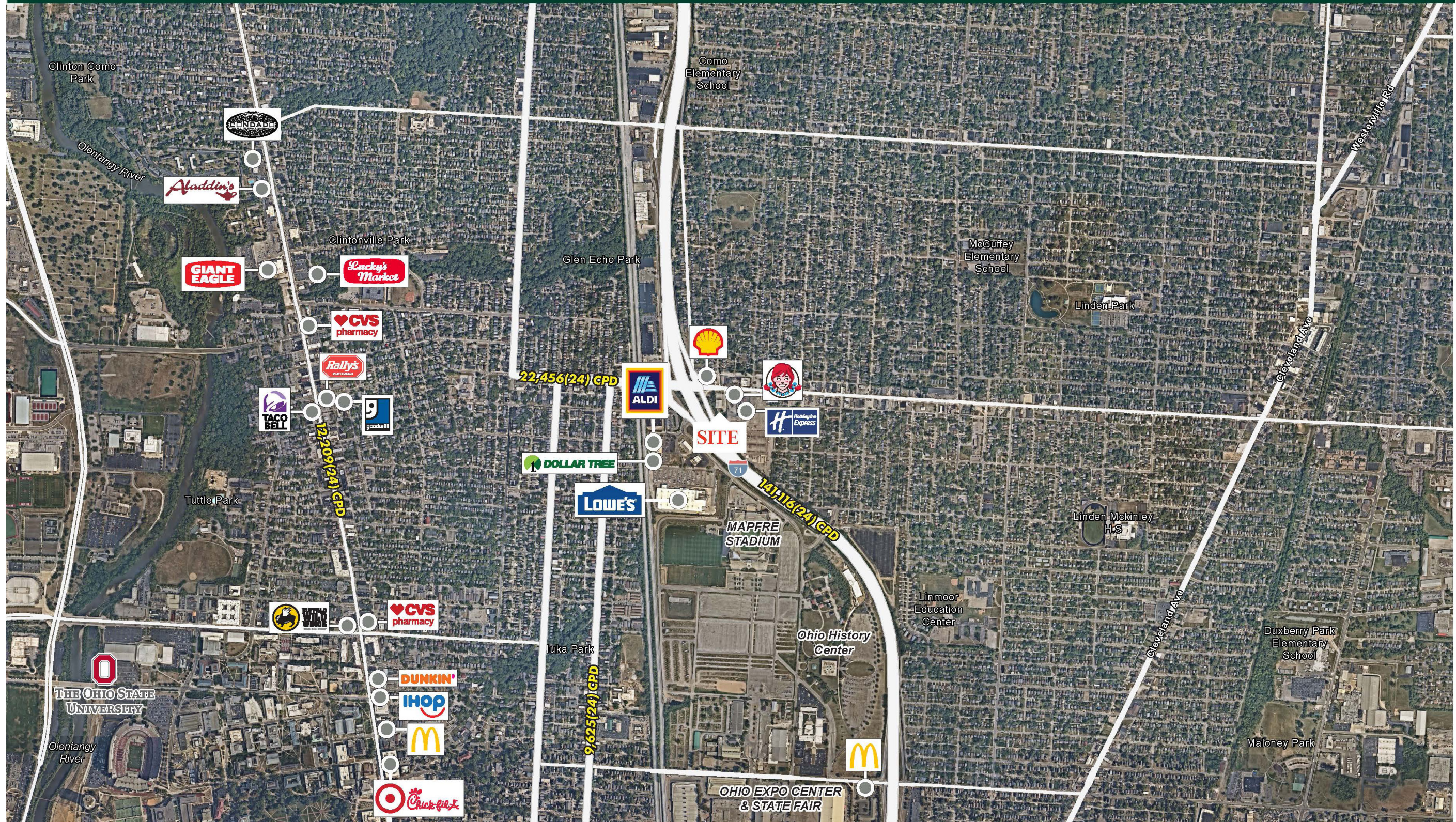
Contact Us

Luke Streng
Vice President
+1 614 781 5134
luke.streng@cbre.com

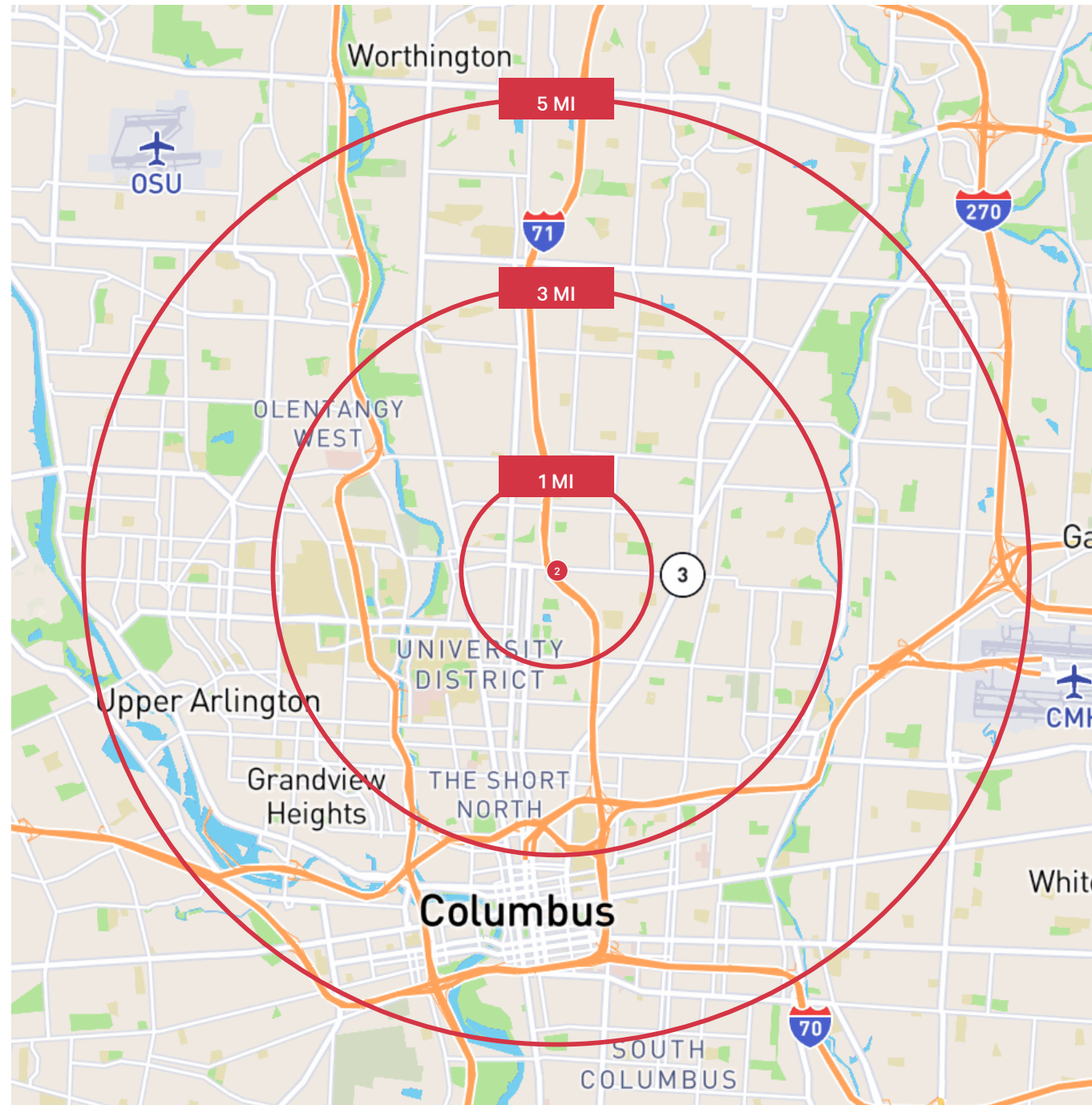
Tyler Thebes
Associate
+1 614 781 5134
tyler.thebes@cbre.com



675 E Hudson St

675 E Hudson St | Columbus, OH 43211



Demographics



Radius	1 Mile	3 Miles	5 Miles
 2024 Businesses	353	5,407	17,344
 2024 Population	23,107	165,576	384,614
 2024 Employment	13,813	92,433	215,324
 2024 HH Income	\$65,289	\$82,120	\$99,538
 2024 Median Age	27.30	28.3	31.70
 2024 Daytime Population	14,628	216,369	545,562