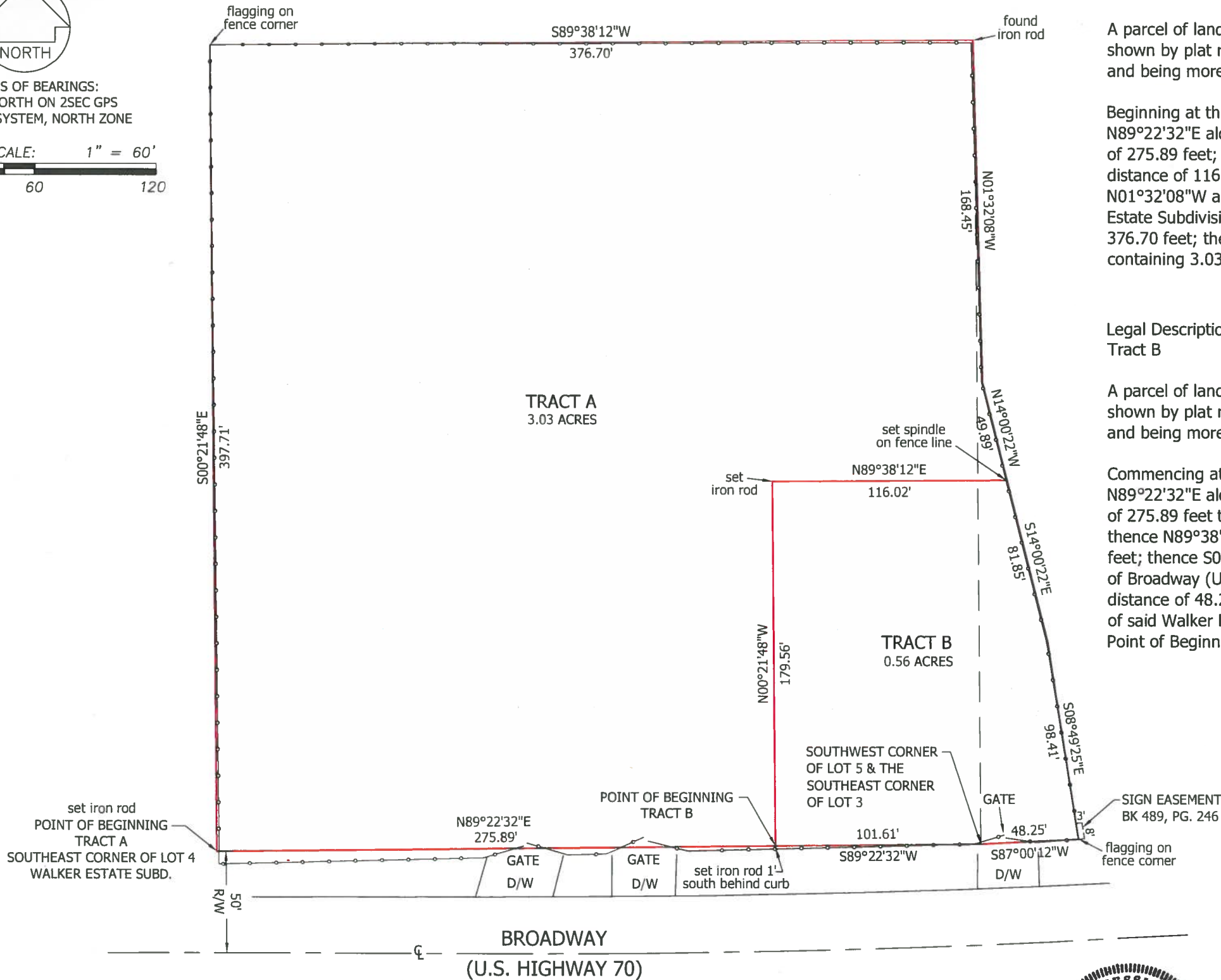
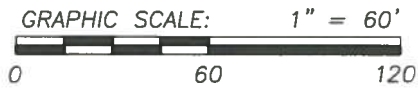




BASIS OF BEARINGS:  
GRID NORTH ON 2SEC GPS  
ARK SPC SYSTEM, NORTH ZONE



**Legal Description  
Tract A**

A parcel of land lying in a part of Lot 3 and a part of Lot 5 of Walker Estate Subdivision as shown by plat recorded in Plat Book 2, Page 201 records of Crittenden County, Arkansas, and being more particularly described as follows:

Beginning at the Southeast corner of Lot 4 of said Walker Estate Subdivision, thence N89°22'32"E along the North right of way line of Broadway (U.S. Highway 70) a distance of 275.89 feet; thence N00°21'48"W a distance of 179.56 feet; thence N89°38'12"E a distance of 116.02 feet; thence N14°00'22"W a distance of 49.89 feet; thence N01°32'08"W a distance of 168.45 feet to a point on the North line of Lot 3 of said Walker Estate Subdivision; thence S89°38'12"W along the North line of said Lot 3 a distance of 376.70 feet; thence S00°21'48"E a distance of 397.71 feet to the Point of Beginning, containing 3.03 acres more or less.

**Legal Description  
Tract B**

A parcel of land lying in a part of Lot 3 and a part of Lot 5 of Walker Estate Subdivision as shown by plat recorded in Plat Book 2, Page 201 records of Crittenden County, Arkansas, and being more particularly described as follows:

Commencing at the Southeast corner of Lot 4 of said Walker Estate Subdivision, thence N89°22'32"E along the North right of way line of Broadway (U.S. Highway 70) a distance of 275.89 feet to the Point of Beginning; thence N00°21'48"W a distance of 179.56 feet; thence N89°38'12"E a distance of 116.02 feet; thence S14°00'22"E a distance of 81.85 feet; thence S08°49'25"E a distance of 98.41 feet to a point on the North right of way line of Broadway (U.S. Highway 70); thence S87°00'12"W along said North right of way line a distance of 48.25 feet to the Southwest corner of Lot 5 and the Southeast corner of Lot 3 of said Walker Estate Subdivision; thence S89°22'32"W a distance of 101.61 feet to the Point of Beginning, containing 0.56 acres more or less.

Sorrell-Smith Engineering Consultants, LLC  
245 W. Broadway West Memphis, Arkansas 72301

SURVEY OF PART OF LOT 3 AND PART OF LOT 5,  
WALKER ESTATE SUBDIVISION AS SHOWN BY  
PLAT RECORDED IN PLAT BOOK 2 AT PAGE 201,  
LYING IN THE SW 1/4 SW 1/4 OF SECTION 9,  
T-6-N, R-9-E, CITY OF WEST MEMPHIS,  
CRITTENDEN COUNTY, ARKANSAS



Scale: 1" = 60'	Drawn By: R.S.	Sheet No. 1 of 1
Date: 9/26/18	Checked By: J.W.S.	