

# Northside East Cobb Medical Center

AVAILABLE FOR LEASE

4800 Olde Towne Pkwy, Marietta, GA 30068

Available  
For Lease

Build-to-Suit  
Opportunity

Class A  
Medical Office

High Visibility  
Location





## About The Property

4800 Olde Towne Parkway is a prominent medical office destination, conveniently located within the Northside East Cobb Medical Center in the heart of East Cobb. The campus accommodates a wide range of medical specialties, creating a strong outpatient healthcare environment. The property benefits from convenient access from Johnson Ferry Road and Olde Towne Parkway and serves the surrounding East Cobb and North Marietta communities.

- 103,184 SF, four-story Class A medical building
- Highly visible setting with free, abundant parking for patients, visitors, and staff
- Purpose-built for outpatient healthcare with imaging, primary care, and urgent care programs
- Competitive lease rates available
- Generous Tenant Improvement Allowance offered



## PROPERTY OVERVIEW

Purpose-built for outpatient healthcare, the building supports a range of uses including imaging, primary care, and urgent care, making it well suited for both established practices and growing providers. The property benefits from its location within a well-recognized medical campus, offering long-term stability and strong patient draw in a sought-after suburban medical corridor.

**±103,184 SF**

Total Size

## NORTHSIDE EAST COBB MEDICAL CENTER

Designed for patient convenience and provider visibility, the building features a covered drop-off, ample surface area parking, and great accessibility.



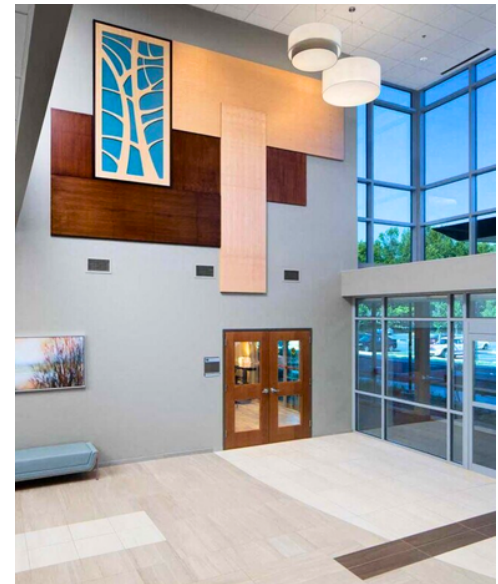
### SURFACE PARKING

The property offers 400 surface parking spaces, providing convenient access for both patients and staff.



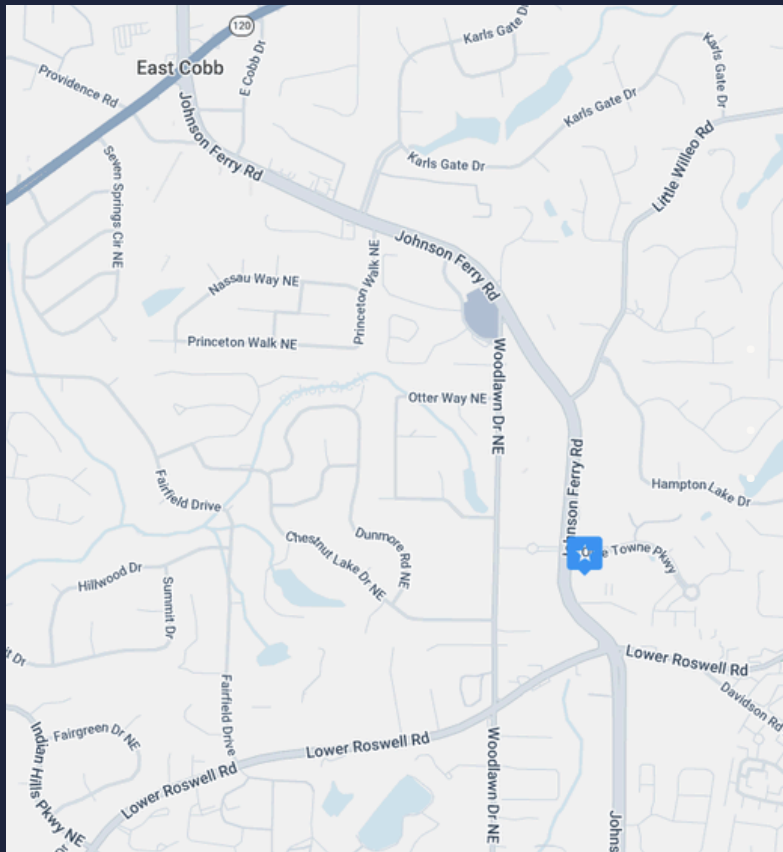
### PORTE COCHERE

Features a porte cochere for patient drop-off, ample parking, and monument signage opportunities.



### ACCESSIBILITY

The building is wheelchair accessible and designed to support patient circulation throughout.



## PROPERTY OVERVIEW

Purpose-built for outpatient healthcare, the building supports a range of uses including imaging, primary care, and urgent care, making it well suited for both established practices and growing providers. The property benefits from its location within a well-recognized medical campus, offering long-term stability and strong patient draw in a sought-after suburban medical corridor.

**±103,184 SF**  
Total Size

## NORTHSIDE EAST COBB MEDICAL CENTER

Designed for patient convenience and provider visibility, the building features a covered drop-off, ample surface area parking, and great accessibility.



## SURFACE PARKING

The property offers 400 surface parking spaces, providing convenient access for both patients and staff.



 Transwestern

**SOUTHEAST  
HEALTHCARE  
ADVISORY  
SERVICES**

JOHN V. LOPEZ, CCIM, RPA  
Managing Director,  
Healthcare Advisory Services  
404.842.6562  
[john.lopez@transwestern.com](mailto:john.lopez@transwestern.com)

MARSH HAZLEHURST  
Senior Associate,  
Healthcare Advisory Services  
404.842.6574  
[marsh.hazlehurst@transwestern.com](mailto:marsh.hazlehurst@transwestern.com)