



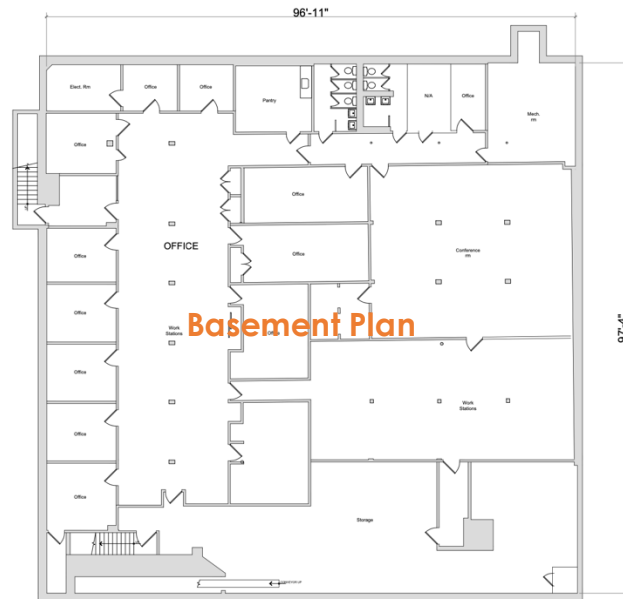
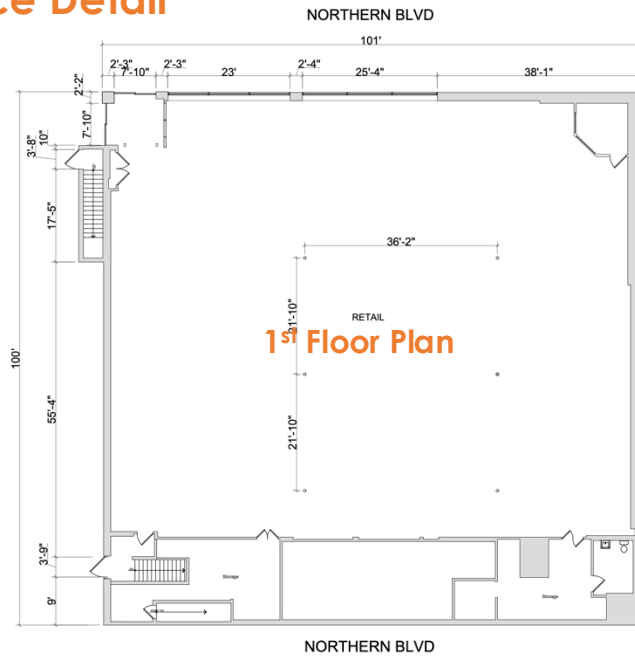
# 144-29 Northern Blvd

Rare Prime End Cap Anchor Retail Space with Ample Parking  
Downtown Flushing | Queens | New York

10,169 SF 1<sup>st</sup> Floor Retail with 9,516 SF Basement for Lease



# Space Detail



## Location

End Cap Anchor Retail Space Close to Northern Blvd & Parsons Blvd

## Size

1<sup>st</sup> Floor 10,169 SF  
 Basement 9,516 SF

## Ceiling Heights

1<sup>st</sup> Floor 16 FT+  
 Basement 10 FT +

## Parking

70 +/- Shared Parking Spots

## Asking Price

Upon Request

## Frontage

Northern Blvd 101 FT

## Lease Term

Long Term

## Currently

Rite Aid

## Procession

Arranged

## Comments

First time on the market since 1984, this rare one-story anchor retail space on Northern Boulevard features ample parking. Positioned on Northern Boulevard with high traffic visibility, it offers a combined storefront width exceeding 200 feet. The space is well-configured, with a full-size basement, making it ideal for various retail uses such as a fresh food supermarket. The area boasts a dense residential population with new developments continually emerging, contributing to a mature commercial ecosystem.

## Transportation

Parsons Blvd Bus Station



## Drive

1 min

## Walk

1 min

## Distance

0.1 mi

Main St Station

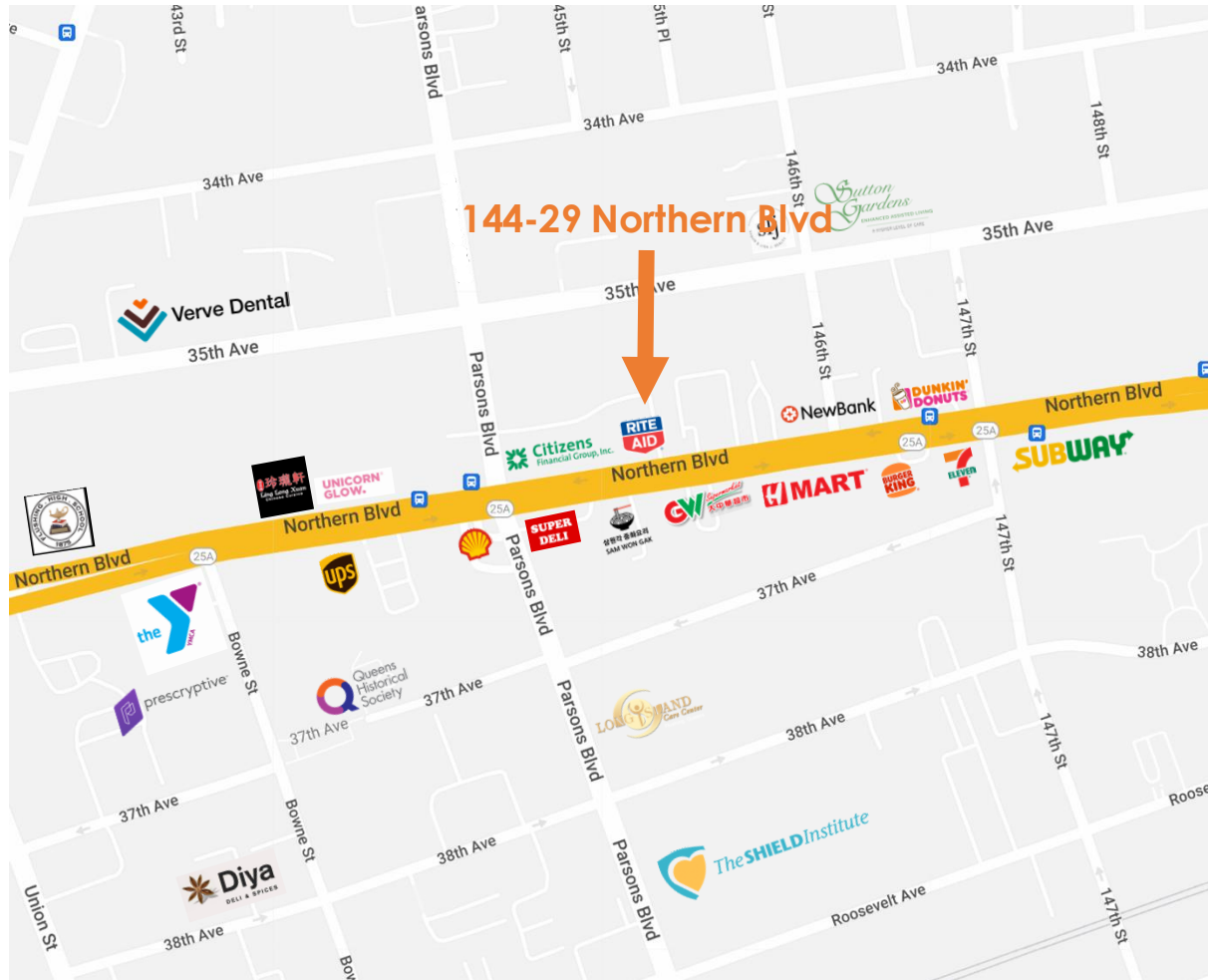


6 min

13 min

0.6 mi

## AREA MAP & DEMOGRAPHICS



	1 Mile	3 Miles	10 Min. Drive
Population	142,405	552,942	1,427,369
Households	49,913	186,830	502,191
Median Age	44.5	41.4	41.1
Median HH Income	\$44,903	\$64,468	\$69,798
Daytime Employees	43,038	125,308	342,603

## CONTACT US

**STEVE ZHU**

steve.zhu@compass.com

**212.772.5957**

**PETER HSING**

peter@zhu-associates.com

**646.617.7762**



All information supplied in this marketing presentation and/or flyer is from sources deemed reliable and is furnished subject to errors, omissions, modifications, removal of listings from sale/lease and to any listing condition. Any square footage, dimensions, floor plans and/or technical data set forth are approximations and are subject to further elaboration/confirmation.