

Gerald L. Gamble Co.

Commercial and Industrial Realtors

204 N. Robinson, Suite 1450 Oklahoma City, OK 73102 Tel. 405-232-1138 Fax 405-239-6805 www.geraldgambleco.com

FOR LEASE

101,000± Sq.Ft. Warehouse

605 N. Tulsa Ave., Building 1

(Also Known as 701 N. Tulsa Ave.)

Oklahoma City



Property Features

Building No. 1 ~ 101,000± Sq. Ft. Warehouse with 10,000± Sq.Ft. Office Space ~ Fully Sprinklered

15 Dock-High Doors with Dock Levelers & 1 (11' x 14') Door with Ramp

6+ Acre Site ~ Large Truck & Automobile Parking ~ Zoned "I-2" Industrial

24-Ft. Clear Ceiling Height ~ LED Lighting in Warehouse ~ 277/480-Volt, 3-Phase Electrical

Rail Served by Union Pacific Railroad

Lease Rate: \$6.00 Per Sq.Ft., Plus Taxes & Insurance



For Further Information Contact
Gerald L. Gamble (405) 232-1138
gambleokc@geraldgambleco.com

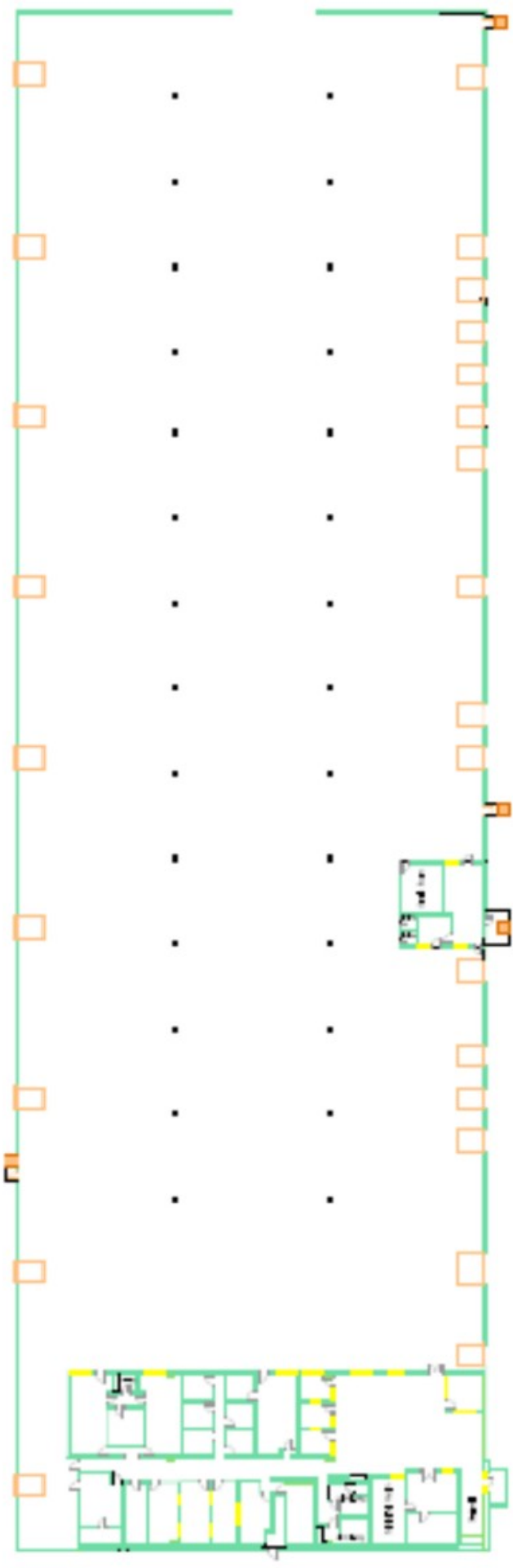


The above statements, while not guaranteed, are from sources believed to be reliable.
Offered subject to sale, change or withdrawal.



BUILDING NO. 1
101,000± Sq. Ft.

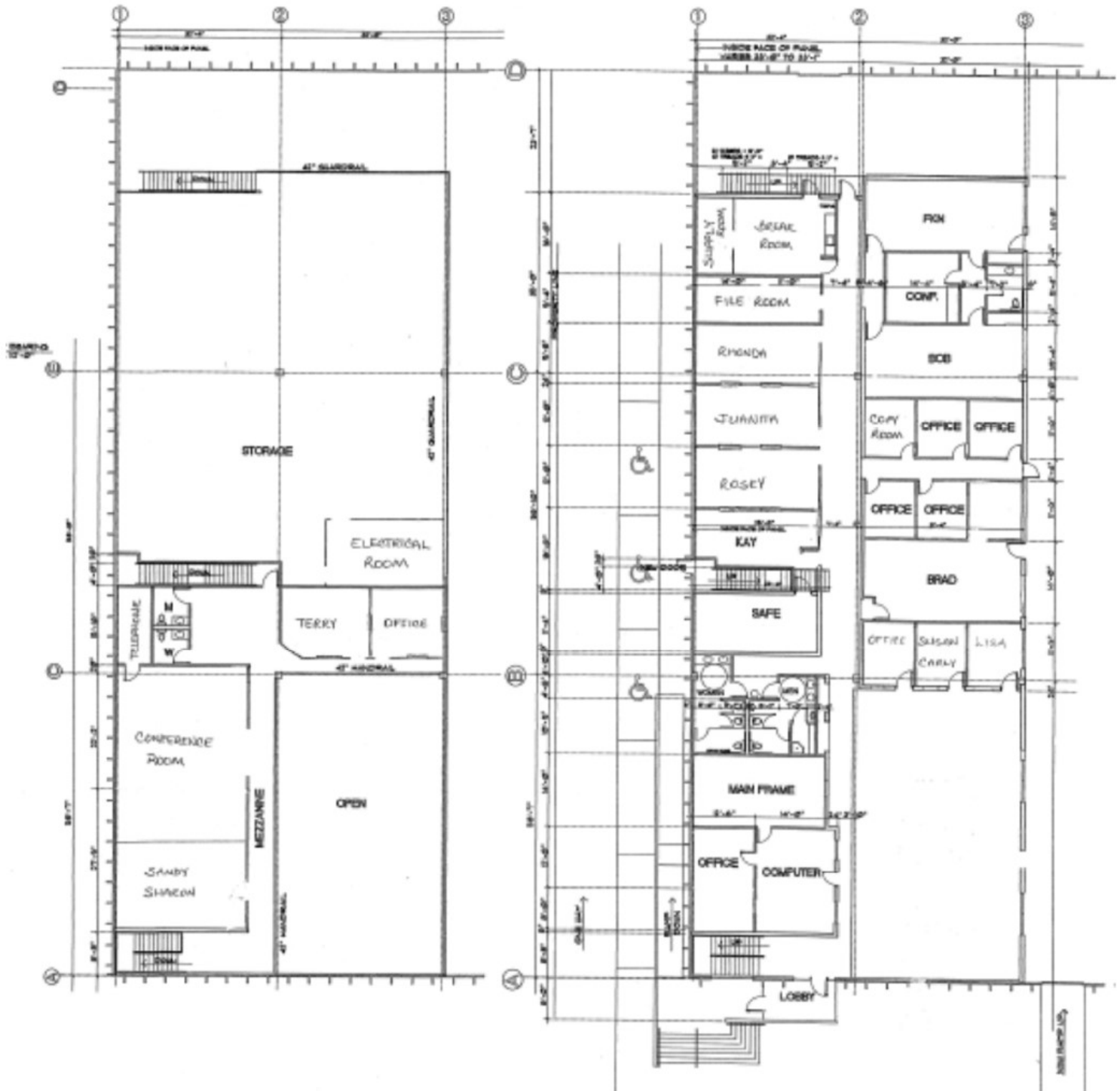
FLOOR PLAN
Warehouse & Office



BUILDING NO. 1

101,000± Sq. Ft.

OFFICE FLOOR PLAN



SECOND FLOOR

FIRST FLOOR

