

# POUND RIDGE SQUARE

55 Westchester Avenue | Pound Ridge, NY | Westchester County

RETAIL SPACE  
FOR LEASE

2,317 SF AVAILABLE



## BROKER CONTACT

**CAROLINE KINTZER**

914-275-8975

Caroline@RoyalPropertiesInc.com

**JEFF KINTZER**

914-237-3400, Ext. 103

Jeff@RoyalPropertiesInc.com





# POUND RIDGE SQUARE

55 Westchester Avenue | Pound Ridge, NY | Westchester County

RETAIL SPACE  
FOR LEASE



## AVAILABLE:

2,317 SF

## JOIN CO-TENANTS:

The Market, United States Postal Service, Ginnel Real Estate, ViVey Skincare, Design Solutions, The Athletic Movement, Pound Ridge Pharmacy, Veronika's Aesthetics, Bryan Brown Architects, and more

## NEIGHBORING RETAILERS:

Key Bank, Chubby's Ace Hardware, Eva Scrivo Salon, Asia Hamachi Restaurant, DiNardo's Ristorante Italiano, Blind Charlie's Café, The Kitchen Table, Avantgarden, BreadNBakes, Pound Ridge Cosmetic Dentistry, La Familia Pizza & Pasta, and many more

## ADDITIONAL INFORMATION:

- 51,065 SF Grocery Anchored Mixed-Use Shopping Plaza
- 215+ Parking Spaces
- Only Shopping Center in Pound Ridge
- Extensive Renovations in 2018

## RENT:

\$35.00/SF

## CAM/TAXES:

\$7.50/SF

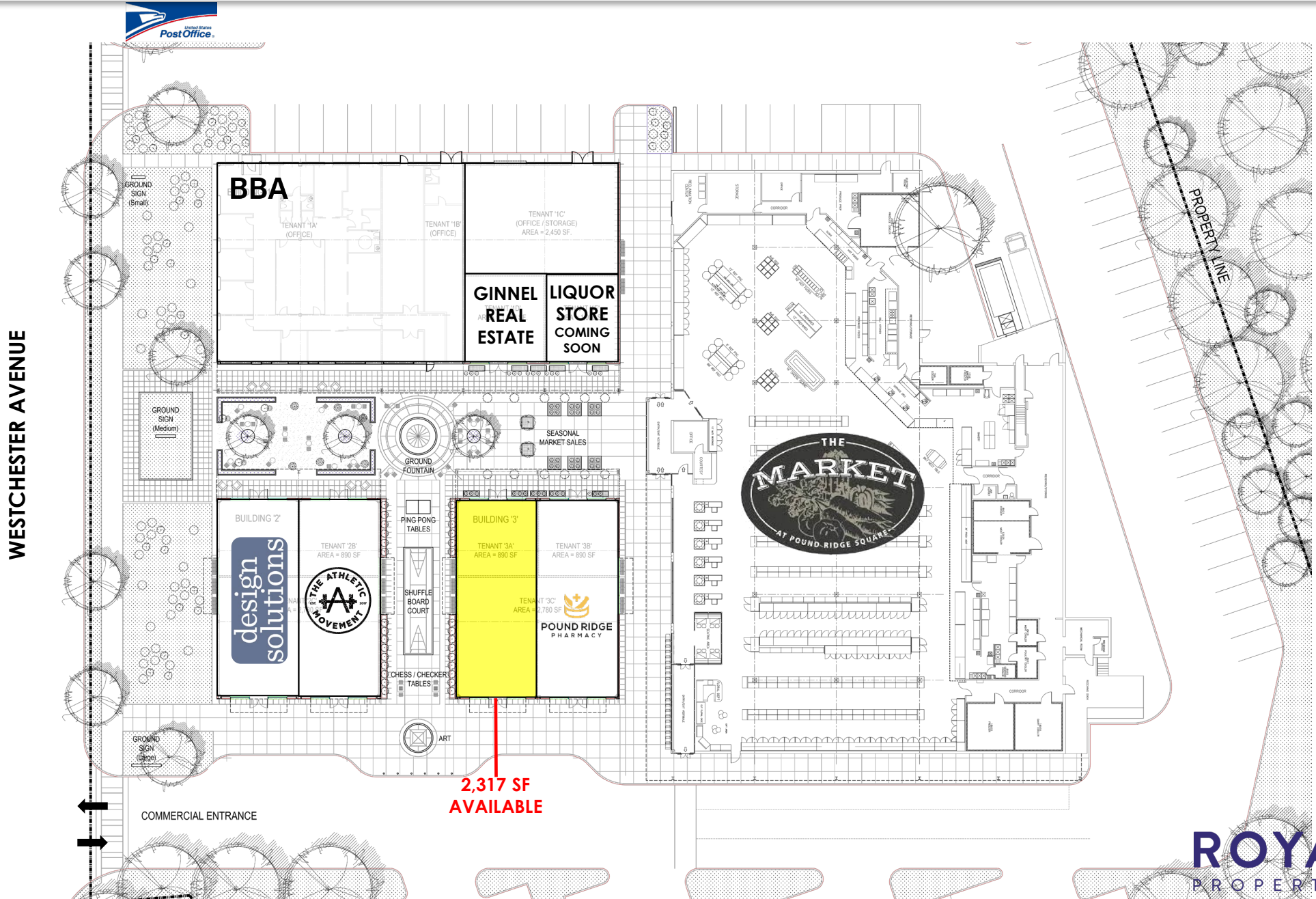
**ROYAL**  
PROPERTIES



# POUND RIDGE SQUARE

55 Westchester Avenue | Pound Ridge, NY | Westchester County

RETAIL SPACE  
FOR LEASE



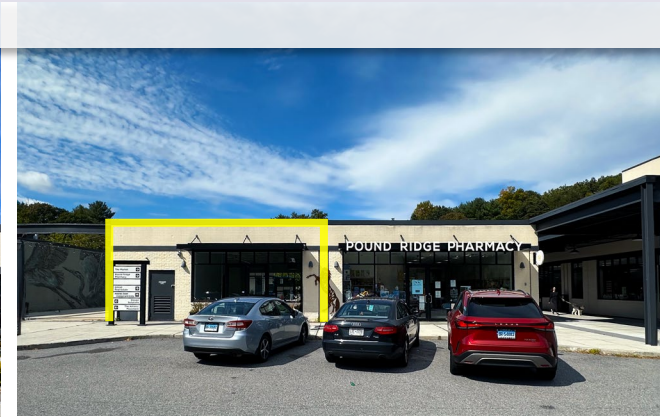
**ROYAL**  
PROPERTIES



# POUND RIDGE SQUARE

55 Westchester Avenue | Pound Ridge, NY | Westchester County

RETAIL SPACE  
FOR LEASE

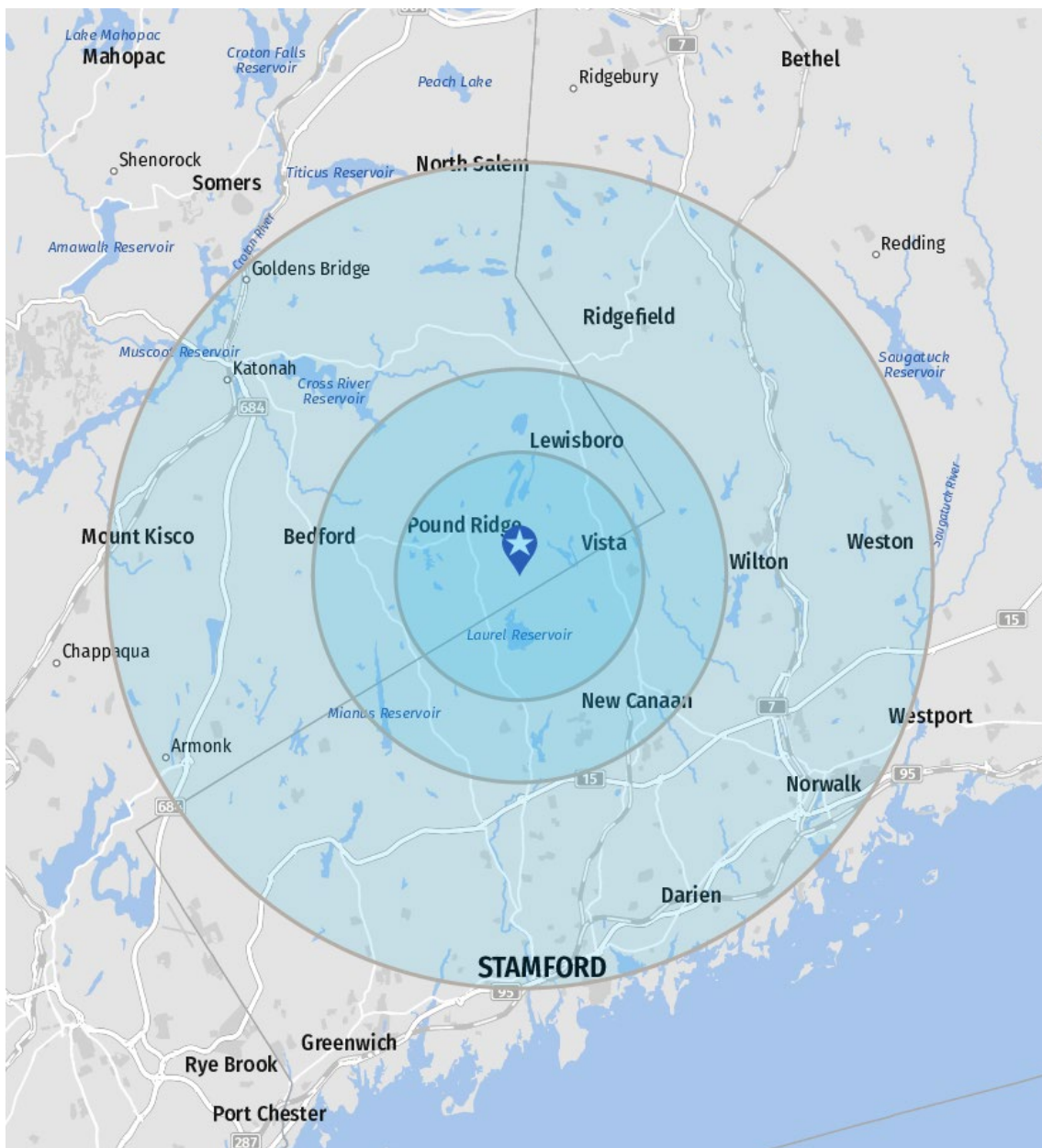




# POUND RIDGE SQUARE

55 Westchester Avenue | Pound Ridge, NY | Westchester County

RETAIL SPACE  
FOR LEASE



## 3 Mile Radius

<b>2024 Est. Population</b>	<b>12,215</b>
<b>2024 Est. Avg. HH Income</b>	<b>\$217,318</b>
<b>Households</b>	<b>4,231</b>
<b>Total Employees</b>	<b>2,154</b>

## 5 Mile Radius

<b>2024 Est. Population</b>	<b>43,528</b>
<b>2024 Est. Avg. HH Income</b>	<b>\$212,812</b>
<b>Households</b>	<b>15,121</b>
<b>Total Employees</b>	<b>13,397</b>

## 10 Mile Radius

<b>2024 Est. Population</b>	<b>368,979</b>
<b>2024 Est. Avg. HH Income</b>	<b>\$157,912</b>
<b>Households</b>	<b>136,597</b>
<b>Total Employees</b>	<b>230,155</b>

**ROYAL**  
PROPERTIES



# POUND RIDGE SQUARE

55 Westchester Avenue | Pound Ridge, NY | Westchester County

RETAIL SPACE  
FOR LEASE

