

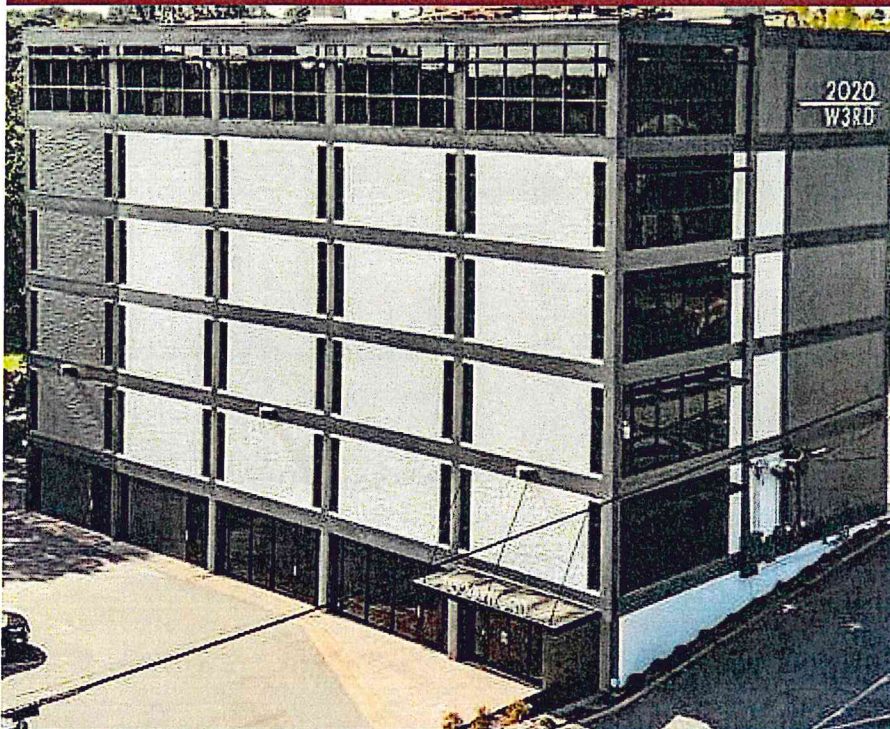
Marshall Peters & Associates

Real Estate Sales & Property Management

2020 W 3rd St.
6,547 SF of space

AVAILABLE IN LITTLE ROCK, AR

501-414-8340



About 2020 W 3rd St.

Professional office space for lease, with suites in a wide range of sizes. Architects, contractors and designers have completed a wonderful update and modernization of this great building. Located on busy thoroughfare connecting downtown to midtown. Convenient access to City, County, and Federal Courts, State Capitol and most all state offices, Capitol View, Stiff Station, Heights, Hillcrest, Midtown, etc. We are a few blocks off I-630 and I-30 and just minutes to the Little Rock National Airport. Little Rock's newest city park is going in across the street and new homes are being built in the area. Come see this great building now and claim your space while they last.

RENTAL RATE
\$15.00 - 22.50
SF/YR

- Building Size: 31,800 Sq Ft
- Year Built: 1971
- Building Class: C