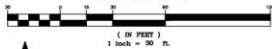
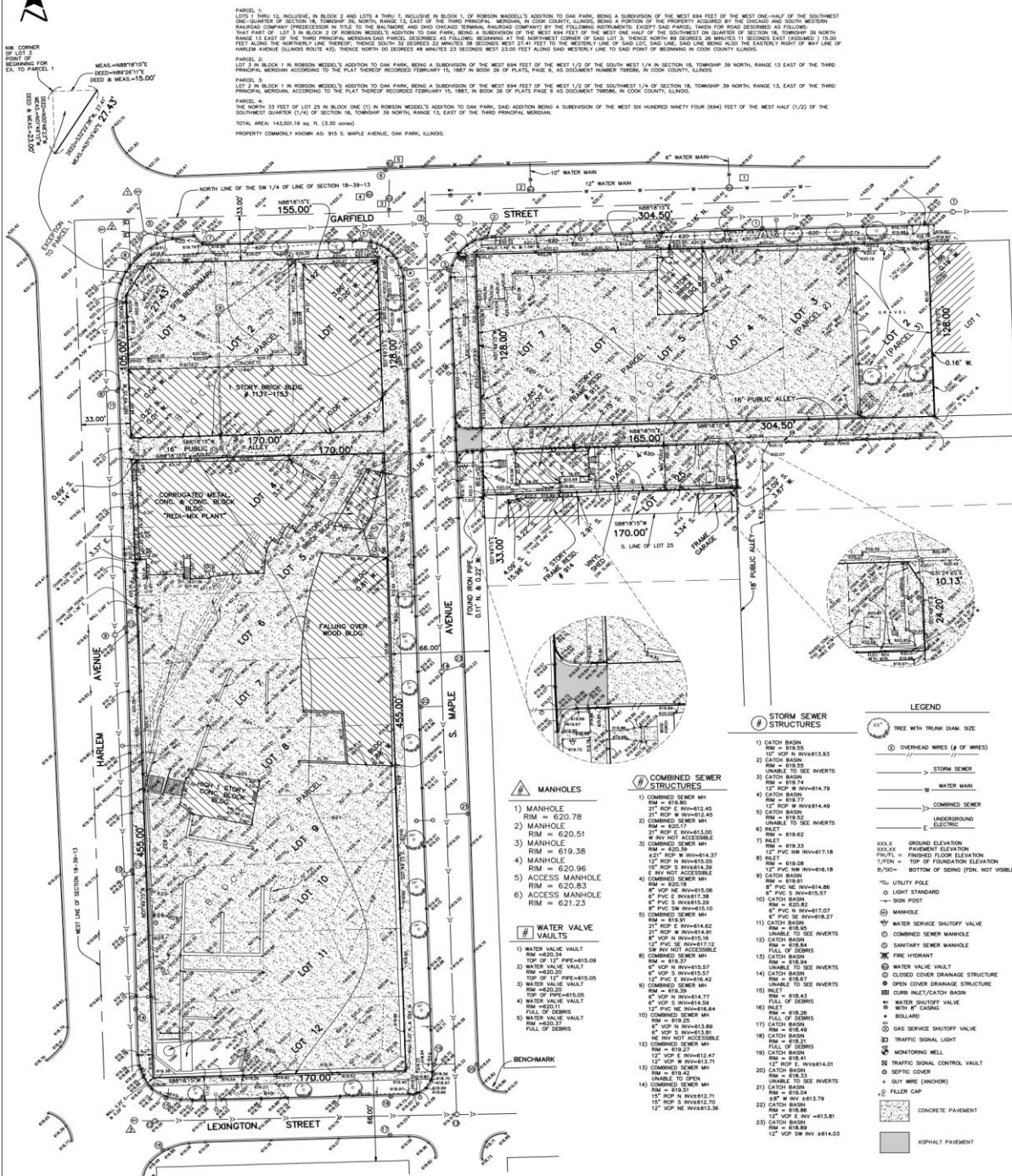


GRAPHIC SCALE



ALTA/NSPS LAND TITLE AND TOPOGRAPHIC SURVEY



PARCEL 1:
 LOTS 1 THRU 12, INCLUSIVE, IN BLOCK 2 AND LOTS 4 THRU 7, INCLUSIVE, IN BLOCK 1, OF ROBSON WEDGELL'S ADDITION TO OAK PARK, BEING A SUBDIVISION OF THE WEST 694 FEET OF THE WEST ONE-HALF OF THE SOUTHWEST ONE-QUARTER OF SECTION 18, TOWNSHIP 39 NORTH, RANGE 13 EAST OF THE THIRD PRINCIPAL MERIDIAN, IN COOK COUNTY, ILLINOIS, BEING A PORTION OF THE PROPERTY ACQUIRED BY THE CHICAGO AND NORTH WESTERN RAILROAD COMPANY (PREDECESSOR IN TITLE TO THE BALDWIN AND CHICAGO TERMINAL RAILROAD COMPANY) BY THE FOLLOWING INSTRUMENTS: LATEST SAID PARCEL TAKEN FOR ROAD RECORDING AS FOLLOWS: PARCEL 1 OF THE 3RD BLOCK OF ROBSON WEDGELL'S ADDITION TO OAK PARK, BEING A SUBDIVISION OF THE WEST 694 FEET OF THE WEST ONE-HALF OF THE SOUTHWEST ONE-QUARTER OF SECTION 18, TOWNSHIP 39 NORTH, RANGE 13 EAST OF THE THIRD PRINCIPAL MERIDIAN, AS FOLLOWS: BEGINNING AT THE NORTHWEST CORNER OF SAID LOT 5, THENCE NORTH 89 DEGREES 48 MINUTES 11 SECONDS EAST (ASSUMED) 13.00 FEET ALONG THE NORTHWEST LINE THEREOF THENCE SOUTH 22 DEGREES 28 MINUTES 10 SECONDS WEST 37.47 FEET TO THE WESTERLY LINE OF SAID LOT 5, SAID LINE BEING ALSO THE EASTERLY RIGHT OF WAY LINE OF HARLEM AVENUE (ILLINOIS ROUTE 43); THENCE NORTH 00 DEGREES 48 MINUTES 23 SECONDS WEST 23.00 FEET ALONG SAID WESTERLY LINE TO SAID POINT OF BEGINNING IN COOK COUNTY, ILLINOIS.

PARCEL 2:
 LOT 2 IN BLOCK 1 IN ROBSON WEDGELL'S ADDITION TO OAK PARK, BEING A SUBDIVISION OF THE WEST 694 FEET OF THE WEST 1/2 OF THE SOUTHWEST 1/4 IN SECTION 18, TOWNSHIP 39 NORTH, RANGE 13 EAST OF THE THIRD PRINCIPAL MERIDIAN, ACCORDING TO THE PLAT HEREBY RECORDED FEBRUARY 15, 1897 IN BOOK 28 OF PLATS PAGE 6, AS DOCUMENT NUMBER 79898, IN COOK COUNTY, ILLINOIS.

PARCEL 3:
 LOT 3 IN BLOCK 1 IN ROBSON WEDGELL'S ADDITION TO OAK PARK, BEING A SUBDIVISION OF THE WEST 694 FEET OF THE WEST 1/2 OF THE SOUTHWEST 1/4 IN SECTION 18, TOWNSHIP 39 NORTH, RANGE 13 EAST OF THE THIRD PRINCIPAL MERIDIAN, ACCORDING TO THE PLAT HEREBY RECORDED FEBRUARY 15, 1897, IN BOOK 28 OF PLATS PAGE 6 AS DOCUMENT NUMBER 79898, IN COOK COUNTY, ILLINOIS.

PARCEL 4:
 THE NORTH 33 FEET OF LOT 25 IN BLOCK ONE (1) IN ROBSON WEDGELL'S ADDITION TO OAK PARK, SAID ADDITION BEING A SUBDIVISION OF THE WEST SIX HUNDRED NINETY FOUR (694) FEET OF THE WEST HALF (1/2) OF THE SOUTHWEST QUARTER (1/4) OF SECTION 18, TOWNSHIP 39 NORTH, RANGE 13, EAST OF THE THIRD PRINCIPAL MERIDIAN.

TOTAL AREA: 143,830.19 sq. ft. (3.30 acres)
 PROPERTY COMMONLY KNOWN AS: 915 S. MAPLE AVENUE, OAK PARK, ILLINOIS.

BASE SCALE: 1 INCH = 30 FEET
 DISTANCES ARE MARKED IN FEET AND DECIMAL PARTS THEREOF
 ORDERED BY: _____
 DRAWN BY: _____
 CHECKED BY: _____
 SURVEYED BY: _____
 COMPARE ALL POINTS BEFORE BUILDING BY SAME AND AT ONCE REPORT ANY DIFFERENCE FOR BUILDING LINE AND OTHER RESTRICTIONS NOT SHOWN HEREON REFER TO YOUR ABSTRACT DEED, CONTRACT AND ZONING ORDINANCE.
 ORDER NO. _____

NOTES:
 THE LOCATIONS OF UNDERGROUND UTILITIES AS SHOWN HEREON ARE BASED ON ABOVE GROUND STRUCTURES AND RECORD DRAWINGS PROVIDED. THE EXACT LOCATION OF UNDERGROUND UTILITIES MAY VARY FROM LOCATIONS SHOWN HEREON. ADDITIONAL SHOWN UTILITIES/STRUCTURES MAY BE ENCOUNTERED. NO EXCAVATIONS WERE MADE DURING THE COURSE OF THIS SURVEY TO LOCATE SHOWN UTILITIES/STRUCTURES. BEFORE ANY EXCAVATION BEGINS, ALL UTILITY COMPANIES SERVING THE PROPERTY SHOULD BE CONTACTED FOR REVISION OF FIELD LOCATION.
 MATTERS OF TITLE PERTAIN TO CHICAGO TITLE INSURANCE COMPANY COMMITMENT NO. 19075956K, COMMITMENT DATED OCTOBER 1, 2016, ITM 4-12 OF SCHEDULE "B" PART 3 EXCEPTIONS PLUSTED AND SHOWN HEREON.
 BASE OF BEARINGS: ILLINOIS STATE PLANE COORDINATE SYSTEM EAST ZONE.
 FLOOD ZONE CLASSIFICATION: PER FLOOD INSURANCE RATE MAP DATED NOVEMBER 01, 2016, SHOWS SUBJECT PROPERTY SHOWN HEREON ON FLOOD INSURANCE RATE MAP NO. 170202020A (FLOOD NOT PRESENT - NO SPECIAL FLOOD HAZARD AREAS).
 BENCHMARK: CITY OF OAK PARK ENGINEERING DIVISION B.M.# 13
 THE STATION IS LOCATED AT THE NORTHEAST QUARTER OF MAPLE AVENUE AND LEXINGTON STREET, ELEV. = 616.86 (DAND BE DATUM)
 SITE BENCHMARK: CROSS OUT IN CONCRETE LOCATED NEAR NORTHWEST CORNER OF SUBJECT PROPERTY, BETWEEN TRAFFIC SIGNAL VAULT AND FIRE HYDRANT.
 ELEV. = 620.17

- LEGEND**
- STORM SEWER STRUCTURES
 - 1) CATCH BASIN RM = 618.08
 - 2) CATCH BASIN RM = 618.08
 - 3) CATCH BASIN UNABLE TO SEE INVERTS RM = 618.74
 - 4) CATCH BASIN RM = 618.74
 - 5) CATCH BASIN UNABLE TO SEE INVERTS RM = 618.49
 - 6) INLET RM = 618.63
 - 7) INLET RM = 619.62
 - 8) INLET RM = 619.63
 - 9) CATCH BASIN UNABLE TO SEE INVERTS RM = 619.28
 - 10) CATCH BASIN UNABLE TO SEE INVERTS RM = 619.63
 - 11) CATCH BASIN UNABLE TO SEE INVERTS RM = 619.63
 - 12) CATCH BASIN UNABLE TO SEE INVERTS RM = 619.63
 - 13) CATCH BASIN UNABLE TO SEE INVERTS RM = 619.63
 - 14) CATCH BASIN UNABLE TO SEE INVERTS RM = 619.63
 - 15) INLET RM = 619.63
 - 16) CATCH BASIN UNABLE TO SEE INVERTS RM = 619.63
 - 17) CATCH BASIN UNABLE TO SEE INVERTS RM = 619.63
 - 18) CATCH BASIN UNABLE TO SEE INVERTS RM = 619.63
 - 19) CATCH BASIN UNABLE TO SEE INVERTS RM = 619.63
 - 20) CATCH BASIN UNABLE TO SEE INVERTS RM = 619.63
 - 21) CATCH BASIN UNABLE TO SEE INVERTS RM = 619.63
 - 22) CATCH BASIN UNABLE TO SEE INVERTS RM = 619.63
 - 23) CATCH BASIN UNABLE TO SEE INVERTS RM = 619.63
 - MANHOLES
 - 1) MANHOLE RIM = 620.78
 - 2) MANHOLE RIM = 620.51
 - 3) MANHOLE RIM = 619.38
 - 4) MANHOLE RIM = 620.96
 - 5) ACCESS MANHOLE RIM = 622.83
 - 6) ACCESS MANHOLE RIM = 621.23
 - WATER VALVE VAULTS
 - 1) WATER VALVE VAULT RIM = 620.78
 - 2) WATER VALVE VAULT RIM = 620.51
 - 3) WATER VALVE VAULT RIM = 619.38
 - 4) WATER VALVE VAULT RIM = 620.96
 - 5) WATER VALVE VAULT RIM = 622.83
 - 6) WATER VALVE VAULT RIM = 621.23
 - COMBINED SEWER STRUCTURES
 - 1) COMBINED SEWER MH RM = 620.39
 - 2) COMBINED SEWER MH RM = 620.39
 - 3) COMBINED SEWER MH RM = 620.39
 - 4) COMBINED SEWER MH RM = 620.39
 - 5) COMBINED SEWER MH RM = 620.39
 - 6) COMBINED SEWER MH RM = 620.39
 - 7) COMBINED SEWER MH RM = 620.39
 - 8) COMBINED SEWER MH RM = 620.39
 - 9) COMBINED SEWER MH RM = 620.39
 - 10) COMBINED SEWER MH RM = 620.39
 - 11) COMBINED SEWER MH RM = 620.39
 - 12) COMBINED SEWER MH RM = 620.39
 - 13) COMBINED SEWER MH RM = 620.39
 - 14) COMBINED SEWER MH RM = 620.39
 - 15) COMBINED SEWER MH RM = 620.39
 - 16) COMBINED SEWER MH RM = 620.39
 - 17) COMBINED SEWER MH RM = 620.39
 - 18) COMBINED SEWER MH RM = 620.39
 - 19) COMBINED SEWER MH RM = 620.39
 - 20) COMBINED SEWER MH RM = 620.39
 - 21) COMBINED SEWER MH RM = 620.39
 - 22) COMBINED SEWER MH RM = 620.39
 - 23) COMBINED SEWER MH RM = 620.39