



**Move-in ready steps
from Bryant Park
Sublease | 1,818 RSF**

Space

Partial 10th floor – 1,818 RSF

Term

July 2026 (with possible extension)

Possession

Immediate

Rate

Upon request

Get more information

John D. Ryan III
Principal
D 212 729 4971
john.ryan@avisonyoung.com

Josh Goldman
Executive Director
D 212 858 9178 | M 917 859 7764
joshua.goldman@avisonyoung.com

Office sublease

28 West 44th Street, Partial 10th Floor
New York, NY 10036

Space highlights

- Plug-and-play space
- Corner unit with abundance of natural lighting and double exposures
- Wet pantry
- 3 offices and balanced open area
- Direct entrance from elevator
- Ability to extend term directly with landlord
- Furniture included



Get more information

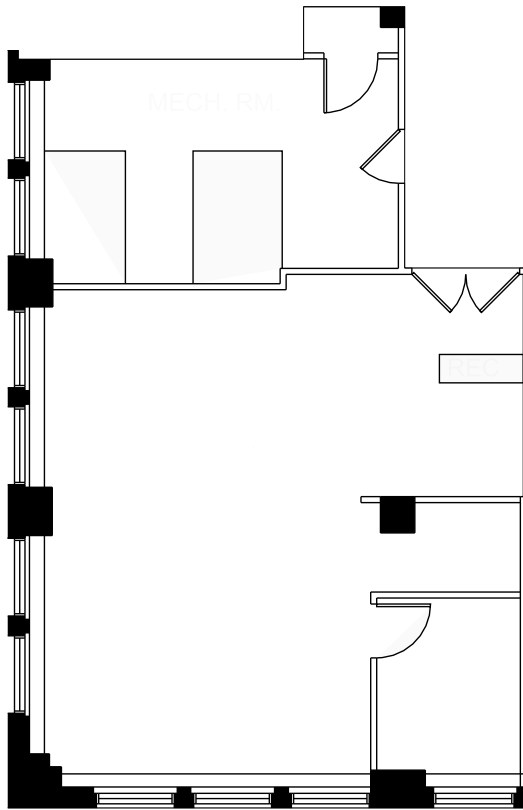
John D. Ryan III
Principal
D 212 729 4971
john.ryan@avisonyoung.com

Josh Goldman
Executive Director
D 212 858 9178 | M 917 859 7764
joshua.goldman@avisonyoung.com

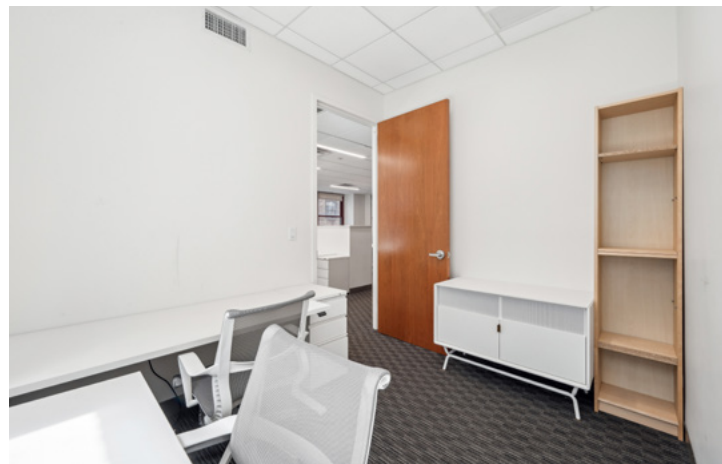


Office sublease

28 West 44th Street, Partial 10th Floor
New York, NY 10036



Floor plan | 1,818 RSF



Get more information

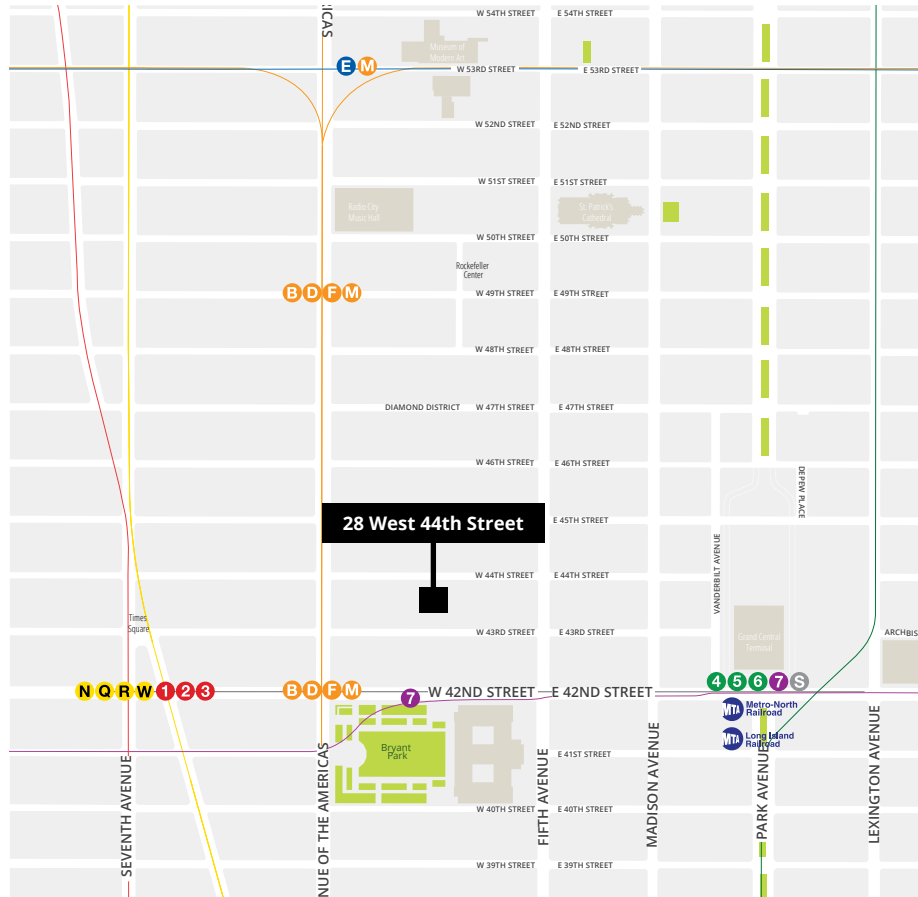
John D. Ryan III
Principal
D 212 729 4971
john.ryan@avisonyoung.com

Josh Goldman
Executive Director
D 212 858 9178 | M 917 859 7764
joshua.goldman@avisonyoung.com

**AVISON
YOUNG**

Office sublease

28 West 44th Street, Partial 10th Floor
New York, NY 10036



Building highlights

- Features three on-premises dining options, barber, tailor, newsstand and US Post Office
- Situated on one of the most prestigious blocks in Midtown
- A short two blocks from Grand Central Terminal, Bryant Park, the New York Public Library, all parts of Midtown and Times Square

Transportation



Get more information

John D. Ryan III
Principal
D 212 729 4971
john.ryan@avisonyoung.com

Josh Goldman
Executive Director
D 212 858 9178 | M 917 859 7764
joshua.goldman@avisonyoung.com

