



AVAILABLE FOR SUBLEASE

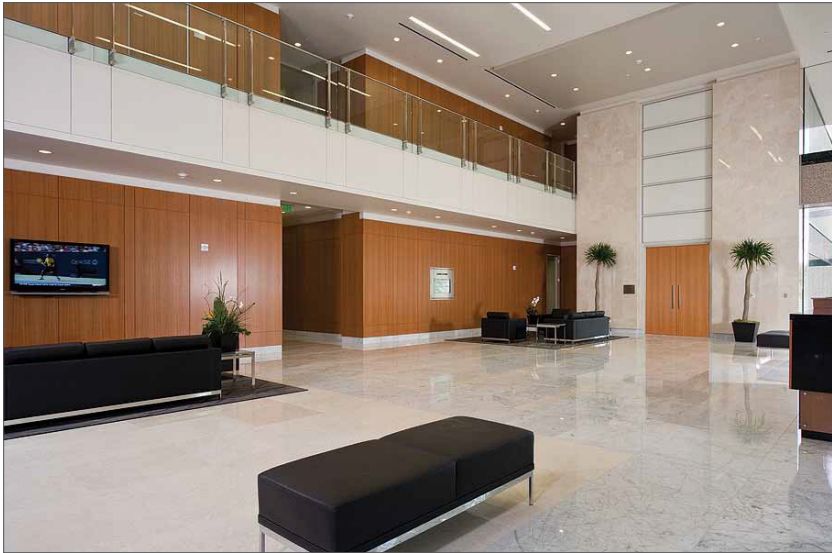
300 PARK AVE
SUITE 900
SAN JOSE, CA 95110

Anna Mcquillan Rose
Vice President
408.753.1785
anna.rose@transwestern.com
lic 01368576

Gabe Chao
Senior Vice President
925.451.2221
gabe.chao@transwestern.com
lic 01916760

AVAILABLE FOR SUBLEASE

300 Park Avenue, Suite 900, San Jose, CA 95110



PROPERTY HIGHLIGHTS

- ±19,735 AVAILABLE FOR SUBLEASE
- LED 3/31/2028
- 24 private offices
- 7 conference rooms
- Boardroom
- ±100 workstations
- Lots of natural light
- Full Kitchen
- 2 double door entries from elevator
- Tours by appointment only

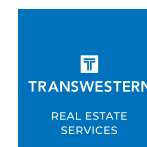
LEASING INFORMATION

Anna Mcquillan Rose
Vice President
408.753.1785
anna.rose@transwestern.com
LIC 01368576

Gabe Chao
Senior Vice President
925.451.2221
gabe.chao@transwestern.com
LIC 01916760

For inquiries, please contact:

**Anna Mcquillan Rose at (408) 753-1785
or anna.rose@transwestern.com**



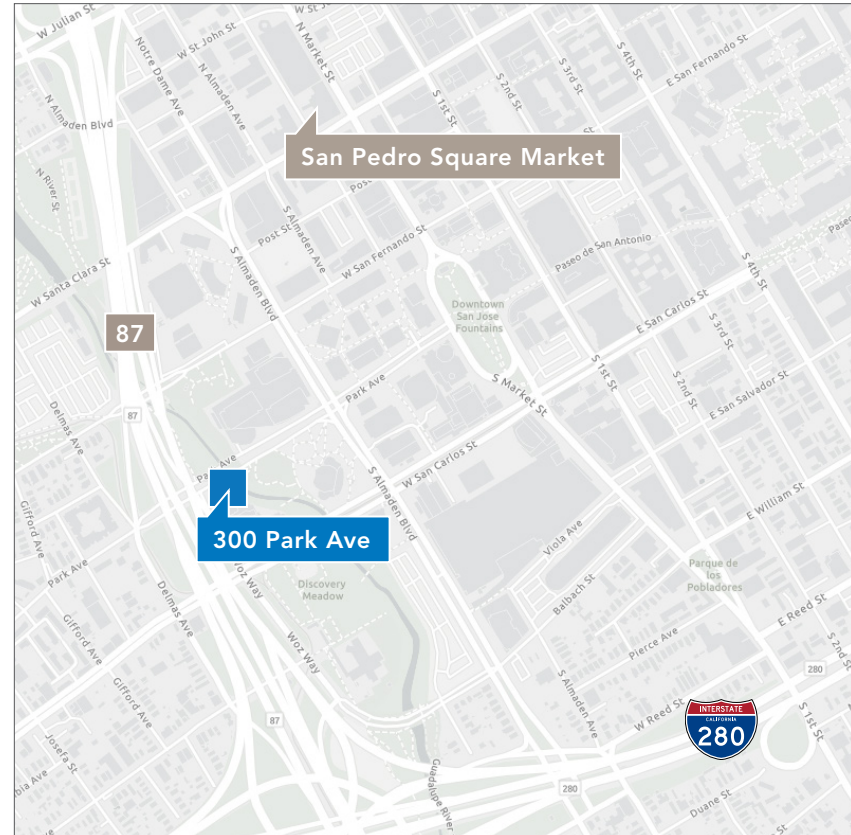
2025 Gateway Place, Suite 370
San Jose, CA 95110
T 408.753.1780
CA BROKERAGE LIC 01263636
transwestern.com

AVAILABLE FOR SUBLEASE

300 Park Avenue, Suite 900, San Jose, CA 95110



FLOOR PLAN OVERVIEW



LOCATION HIGHLIGHTS

- 10-min walk from San Pedro Square
- Exit off Highway 87, close to I-280

LEASING INFORMATION

Anna Mcquillan Rose
Vice President
408.753.1785
anna.rose@transwestern.com
LIC 01368576

Gabe Chao
Senior Vice President
925.451.2221
gabe.chao@transwestern.com
LIC 01916760

For inquiries, please contact:
Anna Mcquillan Rose at (408) 753-1785
or **anna.rose@transwestern.com**



2025 Gateway Place, Suite 370
San Jose, CA 95110
T 408.753.1780
CA BROKERAGE LIC 01263636
transwestern.com

The information provided herein was obtained from sources believed reliable; however, Transwestern makes no guarantees, warranties or representations as to the completeness or accuracy thereof. The presentation of this property is submitted subject to errors, omissions, change of price or conditions, prior sale or lease, or withdrawal without notice. Copyright © 2023 Transwestern.