



OFFICE BUILDING AVAILABLE

1364 Welsh Road, North Wales, PA 19454



PROPERTY
SIZE

28,414 SF



PROPERTY
ACREAGE

2.63 Acres



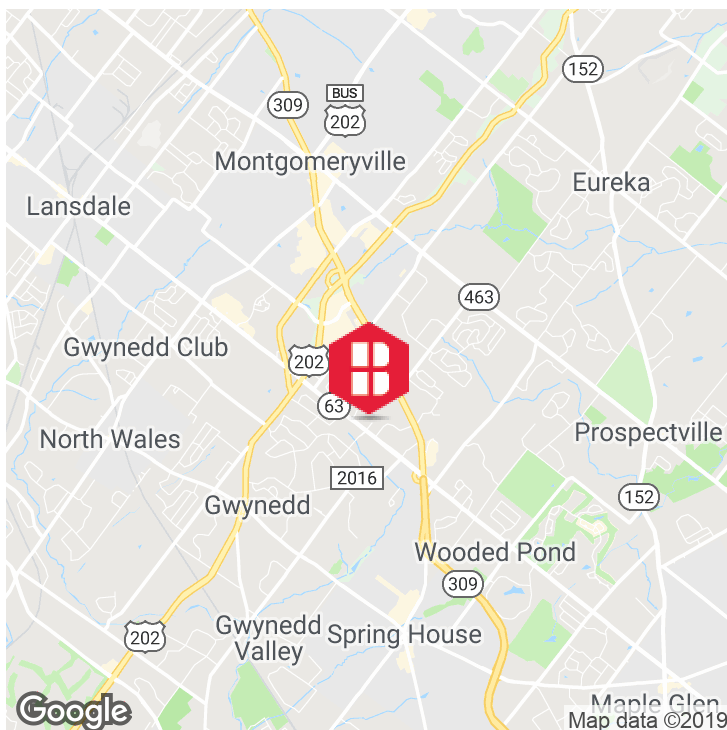
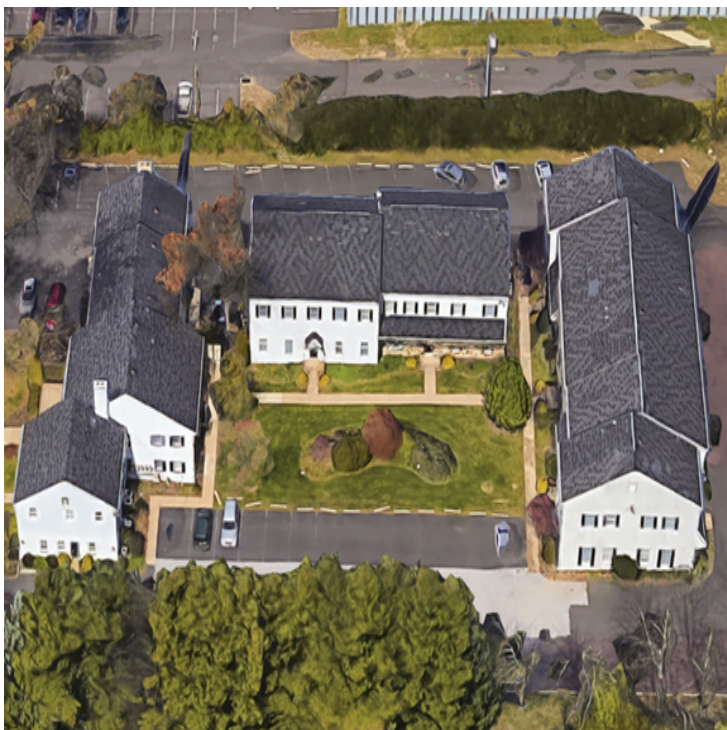
PROPERTY
ZONING

C - Office: Multi-Story



ADDITIONAL
AMENITIES

**Great Visibility with Signage
available**



LOCATION DESCRIPTION

Located on busy Welsh Road (Route 63)

PROPERTY HIGHLIGHTS

- For Lease and For Sale
- Three Office Buildings totaling 28,414 sq. ft.
- Located on busy Welsh Road (Route 63)
- Great Visibility with Signage available
- Parking is 3.6/1000 sq. ft.
- Parcel # 46-04249007
- Zoned C- Office: Multi-story
- 15,000 sq. ft. - 50,000 sq. ft.
- 2.63 Acres



Frank Palopoli

215.448.6229

fpalopoli@binswanger.com



Douglas Kelly

610.278.1270

dkelly@binswanger.com



International Real Estate
Two Logan Square, Philadelphia, PA 19103
Phone: 215.448.6000
Fax: 215.448.6238
binswanger.com

The information contained herein is from sources deemed reliable, but no warranty or representation is made as to the accuracy thereof and no liability may be imposed. RMA 07/19