



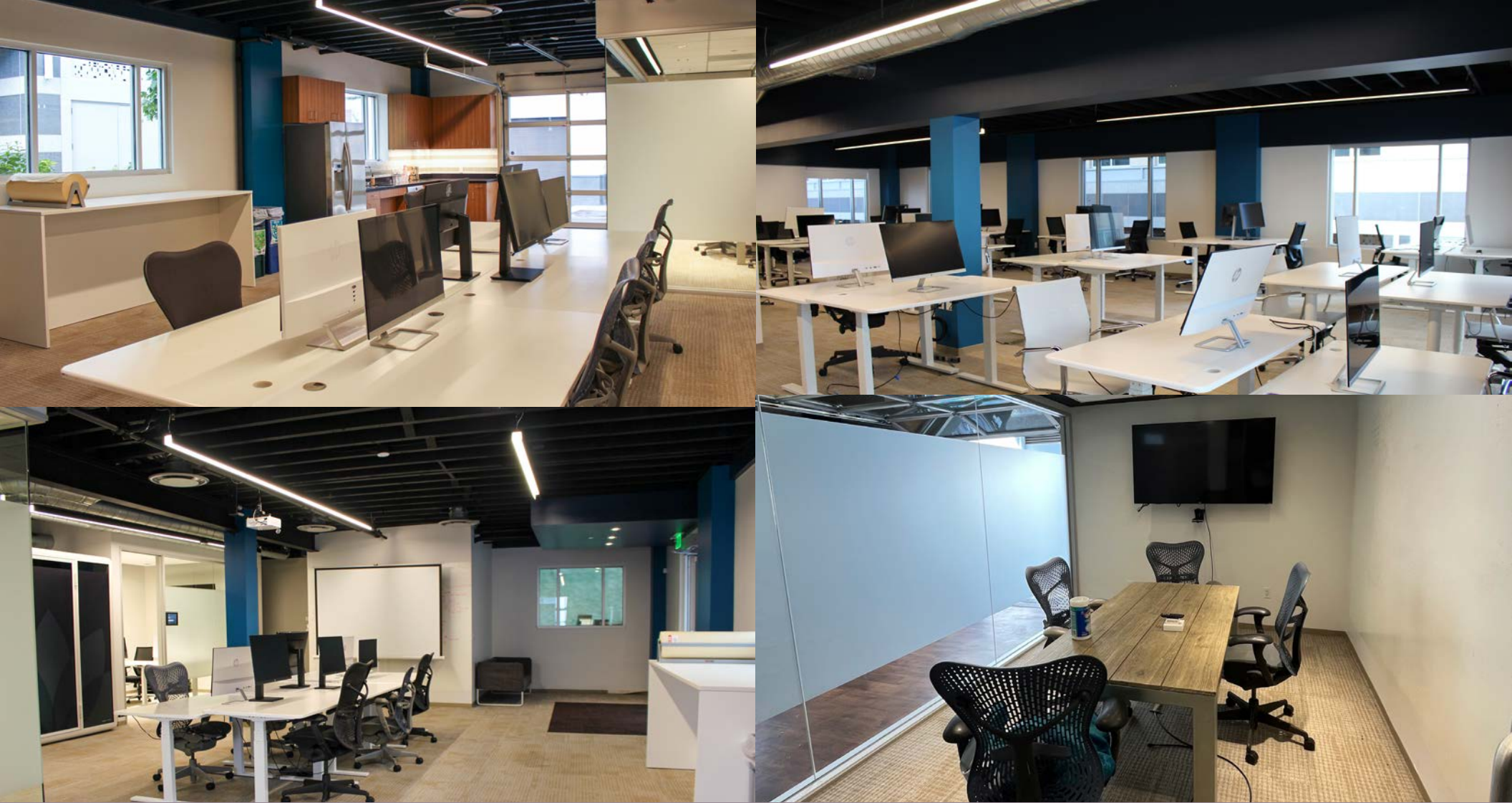
228 LORTON

VIRTUAL TOUR

3,900 SF of Office Space
Available for Lease in Downtown Burlingame

Marc Pope
Executive Managing Director
+1 650 619 2981
marc.pope@cushwake.com
LIC #01474483



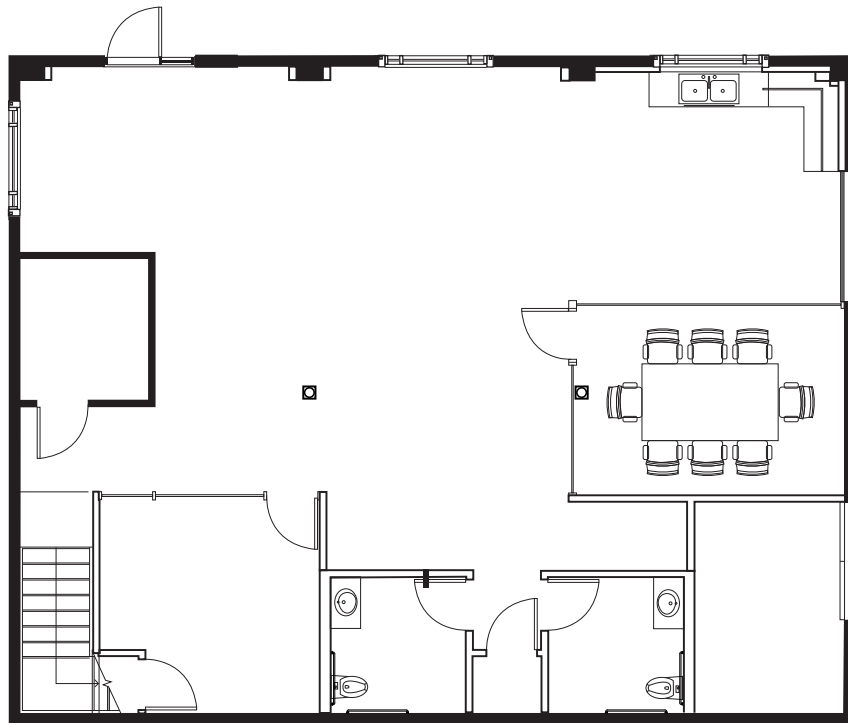


PROPERTY HIGHLIGHTS

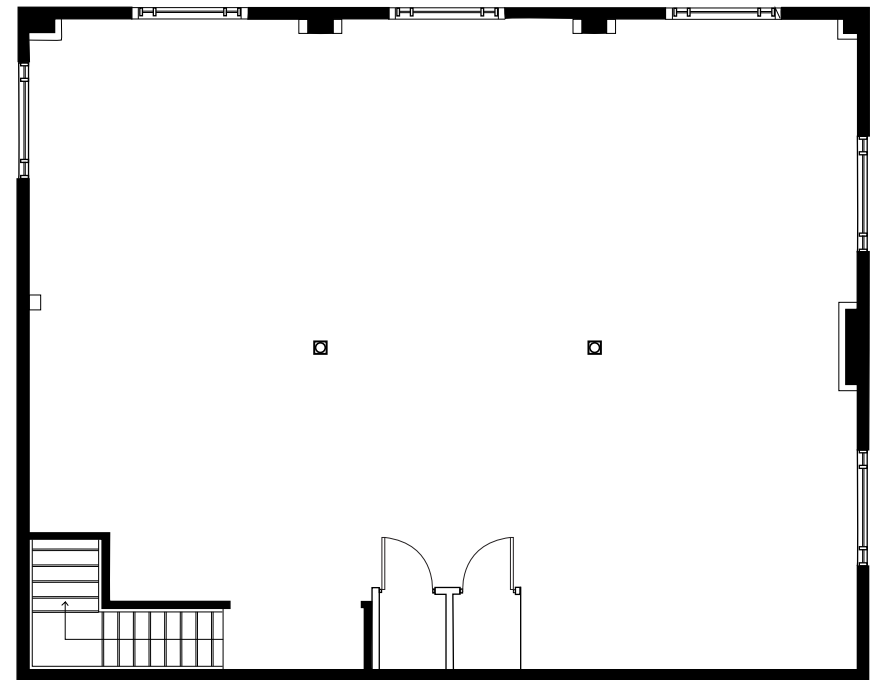
- ± 3,900 SF of Office Space in Downtown Burlingame
- Two Story Building
- Open Office Area
- 2 Meeting Rooms
- Break Area
- 2 Phone Booths
- Located in the Heart of Downtown Burlingame
- Walking distance to abundance of restaurants and amenities
- 900 Feet from Downtown Burlingame Station

228LORTON

FIRST FLOOR



SECOND FLOOR



CLICK HERE FOR A

VIRTUAL TOUR



PARKING

©2024 Cushman & Wakefield. All rights reserved. The information contained in this communication is strictly confidential. This information has been obtained from sources believed to be reliable but has not been verified. NO WARRANTY OR REPRESENTATION, EXPRESS OR IMPLIED, IS MADE AS TO THE CONDITION OF THE PROPERTY (OR PROPERTIES) REFERENCED HEREIN OR AS TO THE ACCURACY OR COMPLETENESS OF THE INFORMATION CONTAINED HEREIN, AND SAME IS SUBMITTED SUBJECT TO ERRORS, OMISSIONS, CHANGE OF PRICE, RENTAL OR OTHER CONDITIONS, WITHDRAWAL WITHOUT NOTICE, AND TO ANY SPECIAL LISTING CONDITIONS IMPOSED BY THE PROPERTY OWNER(S). ANY PROJECTIONS, OPINIONS OR ESTIMATES ARE SUBJECT TO UNCERTAINTY AND DO NOT SIGNIFY CURRENT OR FUTURE PROPERTY PERFORMANCE.



ON-STREET PARKING

- >1 Hour Metered
- 2 Hour Metered
- 4 Hour Metered
- 10 Hour Metered
- Free Parking

PARKING LOTS

- HOURS** Metered Parking
 - HOURS** Pay-and-Display Parking



Northbound Weekdays

5:30, 6:05, 7:13, 7:37, 8:13, 8:37, 9:13,
9:42, 10:15, 10:48, 11:15, 12:10, 1:10,
2:10, 3:15, 3:38, 4:07, 4:53, 5:17, 5:55,
6:17, 6:53, 7:17, 7:37, 7:50, 8:30, 9:30,
10:30, 11:30

Southbound Weekdays

5:23, 5:53, 6:33, 6:52, 7:40, 7:52, 8:40,
8:52, 9:35, 9:59, 10:35, 11:35, 12:35,
1:35, 2:35, 2:59, 3:35, 3:59, 4:38, 5:00,
5:39, 6:00, 6:39, 7:00, 7:58, 9:08, 10:08,
11:08, 12:29

-  AM Trains
 PM Trains