

OFFICE/WAREHOUSE

2333 S. West St. Ct. | Bldg. 100 | Wichita, KS 67213

Suites 104 & 107
LEASE RATE \$12.00/SF, NNN



BUILDING SIZE
BLDG 100: 15,150 SF

AVAILABLE SPACES
BLDG 100

SUITE 104: 1,875 SF±
APPROX. 50/50 OFFICE/
WAREHOUSE

SUITE 107: 2,250 SF±
APPROX. 384 SF OFFICE

YEAR BUILT
BLDG 100: 2004

CONSTRUCTION
METAL ON STEEL

DOCK DOORS
SUITE 104: 0
SUITE 107: 0

OVERHEAD DOORS
SUITE 104: 0
SUITE 107: 1

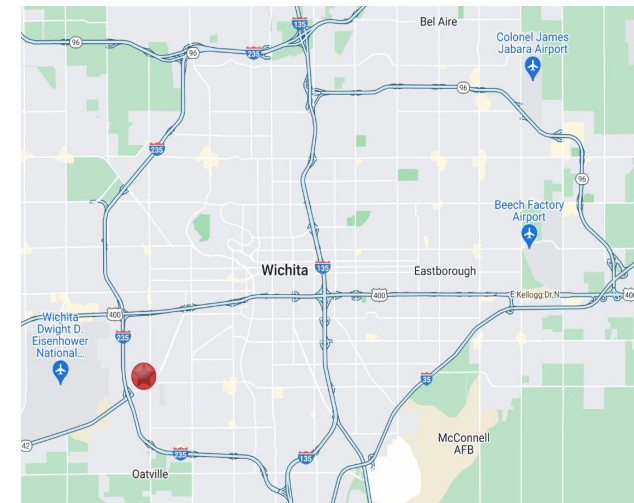
ZONING
LIMITED INDUSTRIAL

CEILING HEIGHT
22'

PARKING
AMPLE

PROPERTY HIGHLIGHTS

- Office/warehouse space available for lease in the K-42 and West Business Park.
- Located in Wichita's most desired industrial area along West Street.
- Direct access to all major arterials via West St. and Southwest Blvd./K-42.



Offered by: **Bradley Tidemann, SIOR** | 316-650-8853 | btidemann@weigand.com

OFFICE/WAREHOUSE

2333 S. West St. Ct. | Bldg. 100 | Wichita, KS 67213

Suites 104 & 107

LEASE RATE \$12.00/SF, NNN

INTERIOR PHOTOS



All information furnished regarding property for sale, lease, exchange or financing is from sources deemed reliable but no guarantee is made or responsibility assumed as to its accuracy or completeness and you are advised to make your own analysis and verification. Broker hereby notifies prospective buyer/lessee that (a) Broker will be acting as an agent of seller/lessor with the duty to represent seller/lessor's interest; (b) Broker will not be the agent of buyer/lessee; and (c) Information given to Broker will be disclosed to seller/



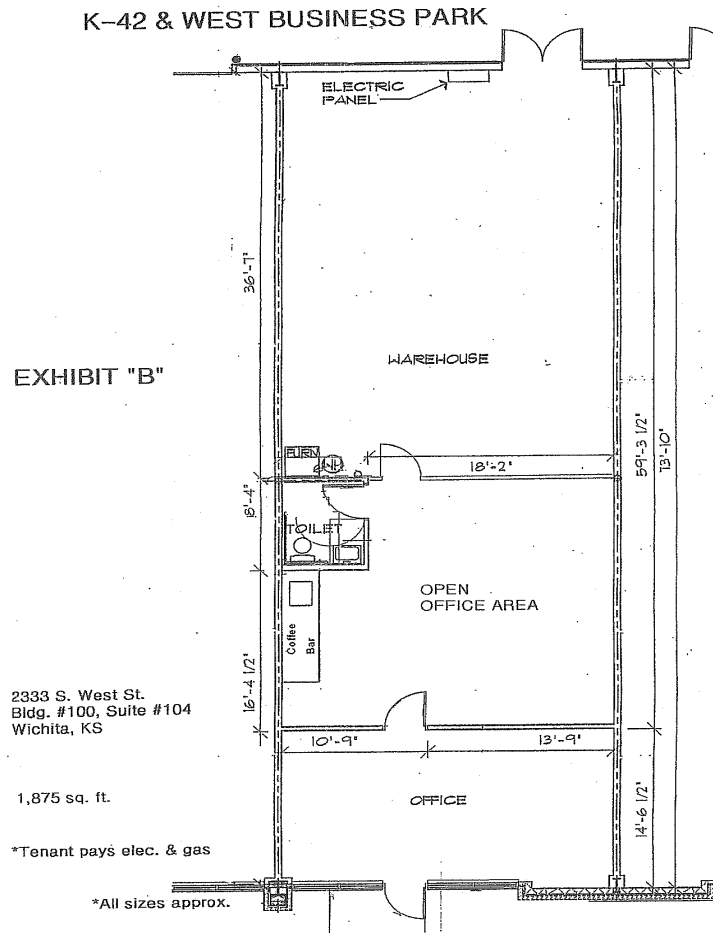
Offered by: **Bradley Tidemann, SIOR** | 316-650-8853 | btidemann@weigand.com

OFFICE/WAREHOUSE

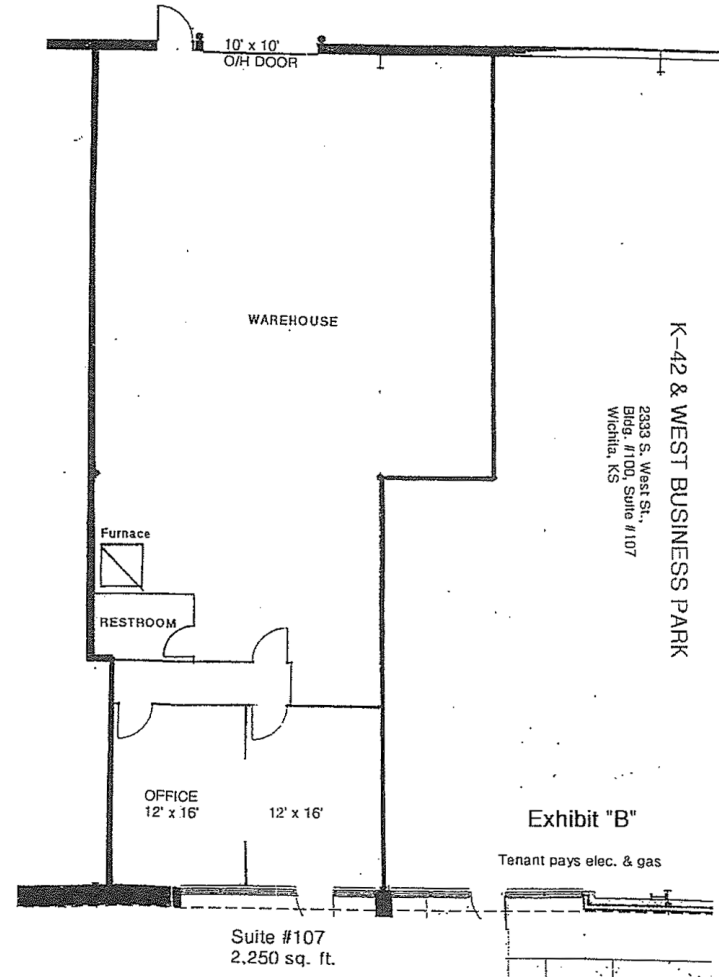
2333 S. West St. Ct. | Bldg. 100 | Wichita, KS 67213

Suites 104 & 107
LEASE RATE \$12.00/SF, NNN

FLOOR PLAN - SUITE 104



FLOOR PLAN - SUITE 107



All information furnished regarding property for sale, lease, exchange or financing is from sources deemed reliable but no guarantee is made or responsibility assumed as to its accuracy or completeness and you are advised to make your own analysis and verification. Broker hereby notifies prospective buyer/lessee that (a) Broker will be acting as an agent of seller/lessor with the duty to represent seller/lessor's interest; (b) Broker will not be the agent of buyer/lessee; and (c) Information given to Broker will be disclosed to seller/



Offered by: **Bradley Tidemann, SIOR** | 316-650-8853 | btidemann@weigand.com

OFFICE/WAREHOUSE

2333 S. West St. Ct. | Bldg. 100 | Wichita, KS 67213

Suites 104 & 107
LEASE RATE \$12.00/SF, NNN



All information furnished regarding property for sale, lease, exchange or financing is from sources deemed reliable but no guarantee is made or responsibility assumed as to its accuracy or completeness and you are advised to make your own analysis and verification. Broker hereby notifies prospective buyer/lessee that (a) Broker will be acting as an agent of seller/lessor with the duty to represent seller/lessor's interest; (b) Broker will not be the agent of buyer/lessee; and (c) Information given to Broker will be disclosed to seller/



Offered by: **Bradley Tidemann, SIOR** | 316-650-8853 | btidemann@weigand.com