

780 W. Baseline Road , Suite C
Lafayette, Colorado 80027
For Lease | Prime Commercial Space

Approx. 1,748 sq/ft - \$15.00/sq/ft



Eric Rutherford MBA, CCIM, GREEN
303.541.1908

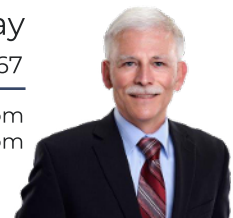
erutherford@wkre.com
www.ericrutherford.com

United States Naval Academy Graduate
Served as an Officer in the United States Marine Corps



Dan Tremblay
720.564.6067

dtremblay@wkre.com
www.dantremblay.wkre.com



Details

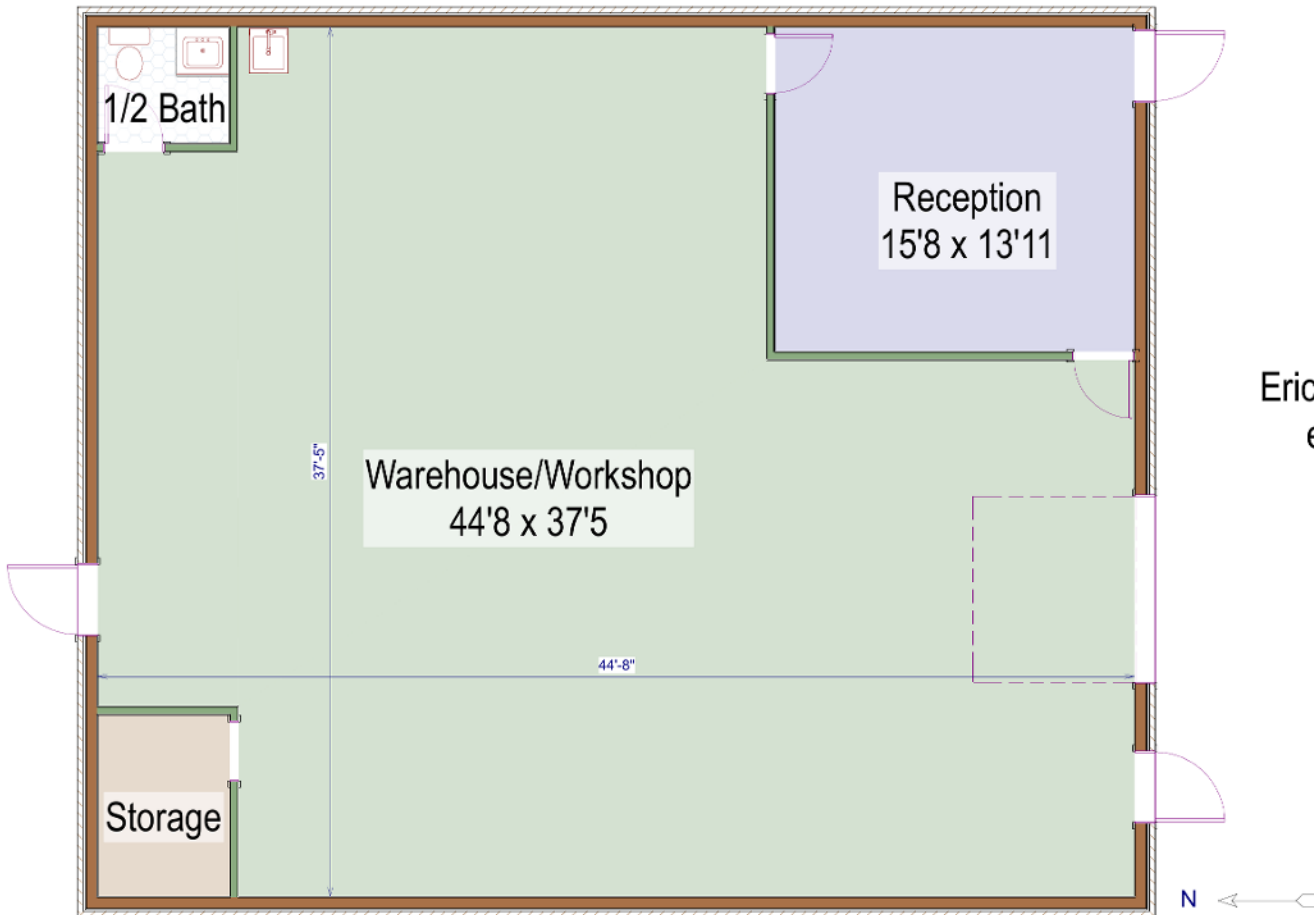
Approximately 1,748 sq/ft - \$15.00 sq/ft + NNN \$10.75

- Zoned B1 (Community Service) Uses included but not limited to art gallery, studio, machine shop, office, and other similar uses.
- \$10.75 NNN. Includes trash, recycling, snow removal, grounds maintenance, building maintenance and repairs, property management fees, parking lot repairs, property taxes and insurance.
- Overhead garage door, open floor plan with private bathroom, small waiting reception area.
- Easy access to US 287. Located just East of 287 on Baseline.
- Excellent visibility with adjacent neighbors including the Downtown Lafayette area, King Soopers and several local breweries.
- Shared parking lot.



Floor Plan

780 Baseline Road, C
Lafayette, Colorado



Eric Rutherford|Dan Tremblay
erutherford@wkre.com
Tel:(303)541-1908
dtremblay@wkre.com
Tel:(720-564-6067



Measurements are approximate and no responsibility is taken for any omission or mis-statement. These plans are for visual representation purposes only. Floor plan is not an architectural as-built nor a survey of any kind.

Floor Plans prepared by Overhead Views, (303)886-9578, esw@overheadviews.com

