

# CONCEPTUAL

## FOR REVIEW / DISCUSSION

## NOT FOR CONSTRUCTION

### CRS DISCLAIMER:

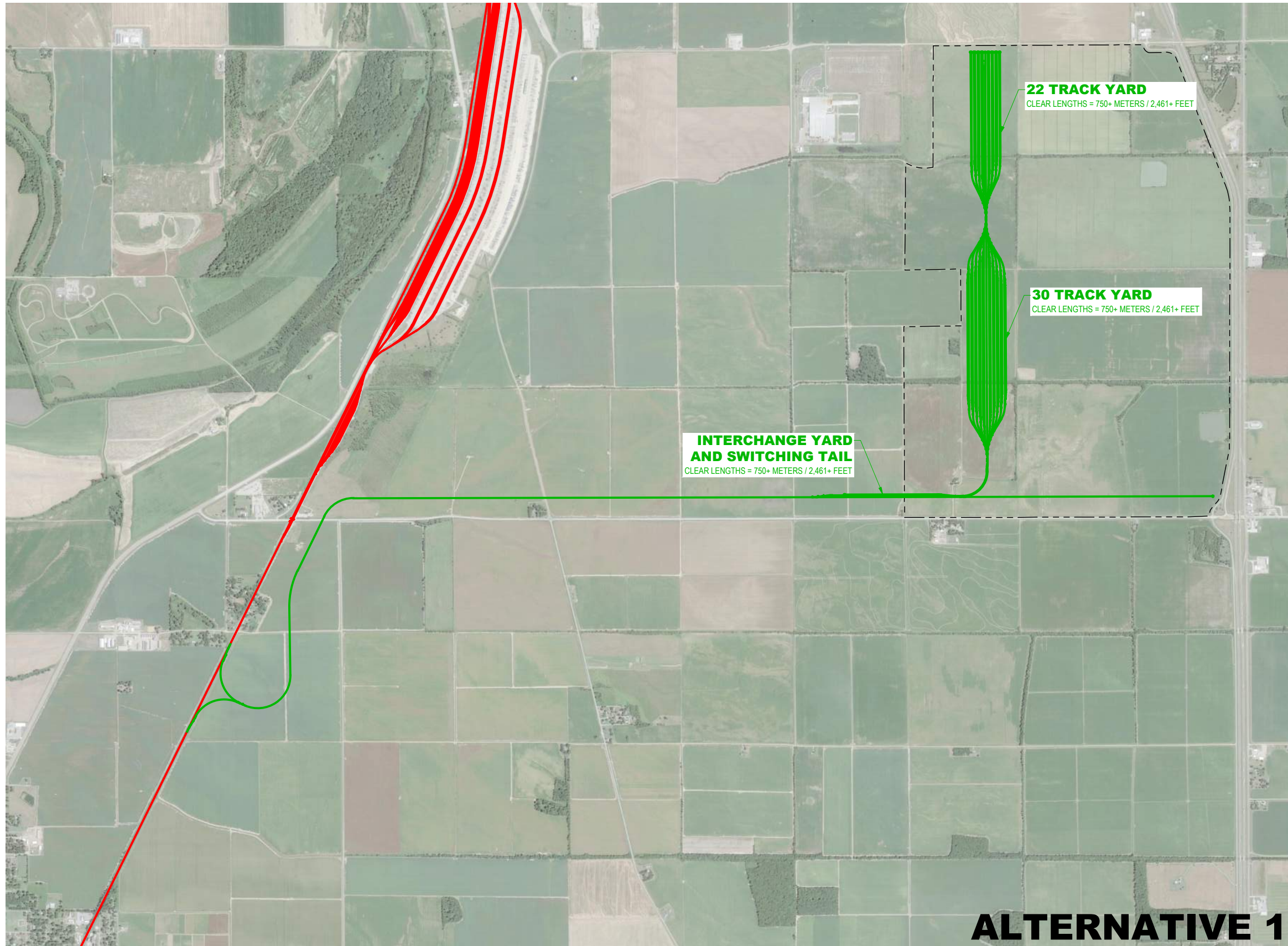
THIS DRAWING IS PRELIMINARY AND SUBJECT TO CHANGE DEPENDENT UPON SITE SURVEY, FINAL DESIGN, UTILITY COORDINATION, AND RAILROAD APPROVAL.

IF PROPERTY LINES ARE SHOWN ON THESE DRAWINGS, THE LOCATION SHOWN AND THE RELATIONSHIP WITH EXISTING AND PROPOSED IMPROVEMENTS ARE ONLY APPROXIMATE. NO ATTEMPT TO ANALYZE DEEDS, LOCATE EVIDENCES, DETERMINE EXACT LOCATION OF THE PROPERTY LINE WAS MADE. THIS DOES NOT CONSTITUTE A BOUNDARY SURVEY AND NO CLAIMS TO THE CORRECT LOCATION OF THE PROPERTY LINES ARE MADE BY SHOWING THE LINEWORK ON THESE DRAWINGS.

### UPRR DISCLAIMER:

THE DESIGN CONCEPT IS FOR PRELIMINARY DISCUSSION PURPOSES ONLY. IT DOES NOT CONSTITUTE APPROVAL NOR A GUARANTEE TO PROVIDE ANY LEVEL OF SERVICE TO THIS LOCATION. THIS CONCEPT IS BASED ON AVAILABLE AERIAL IMAGERY AND DOES NOT CONSIDER MATTERS WHICH COULD IMPACT FEASIBILITY, INCLUDING WITHOUT LIMITATION UTILITIES, ENVIRONMENTAL CONDITIONS, PERMITTING, AND PROPERTY ISSUES. ULTIMATE FORMAL PROJECT DESIGN MUST MEET UNION PACIFIC'S TECHNICAL SPECIFICATIONS FOR CONSTRUCTION OF INDUSTRIAL TRACKS.

UPRR RIGHT-OF-WAY LINES ARE APPROXIMATE AND ARE DEPICTED FROM AERIAL IMAGERY.



# ALTERNATIVE 1

REV #	BY	DATE	DESCRIPTION

EX UPRR TRACK

PROP UPRR TRACK

REMOVE UPRR TRACK

SHIFT UPRR TRACK

EX IND TRACK

PROP IND TRACK

REMOVE IND TRACK

SHIFT IND TRACK

FUTURE IND TRACK

PROP LEASED IND TRK

EX LEASED IND TRK

NO RR OPERATIONS

OTHER IND TRK

RIGHT OF WAY

HAND THROW TURNOUT

POWER TURNOUT

POWER DERAIL

HAND THROW DERAIL

POINT OF CURVE

BRIDGE

SIGNAL

C

R

S

CRS ENGINEERS

Answers to Infrastructure®

4246 S Riverboat Rd, Ste 200 | Salt Lake City, UT 84123

P: 801.939.5565 | www.crsengineers.com

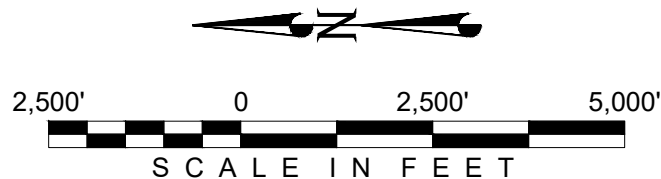
CRS PROJECT NUMBER

2019-0203



FES#:	44681	DOCUMENT TYPE:	CONCEPT
DRAWN BY:	T. BUHLER	UNION PACIFIC RAILROAD	FOR USE IN AGREEMENT WITH TBD
CHECKED BY:	D. EYRE	LOCATION & DESCRIPTION:	MP 363, MEMPHIS SUBDIVISION WEST MEMPHIS, CRITTENDEN Co, AR TRACK TO SERVE: TBD
DATE:	AUG 25, 2022	SHEET TITLE:	ALTERNATIVE 1
SHEET NUMBER	1 OF 3		





CONCEPTUAL

FOR REVIEW / DISCUSSION

NOT FOR CONSTRUCTION

**CRS DISCLAIMER:**

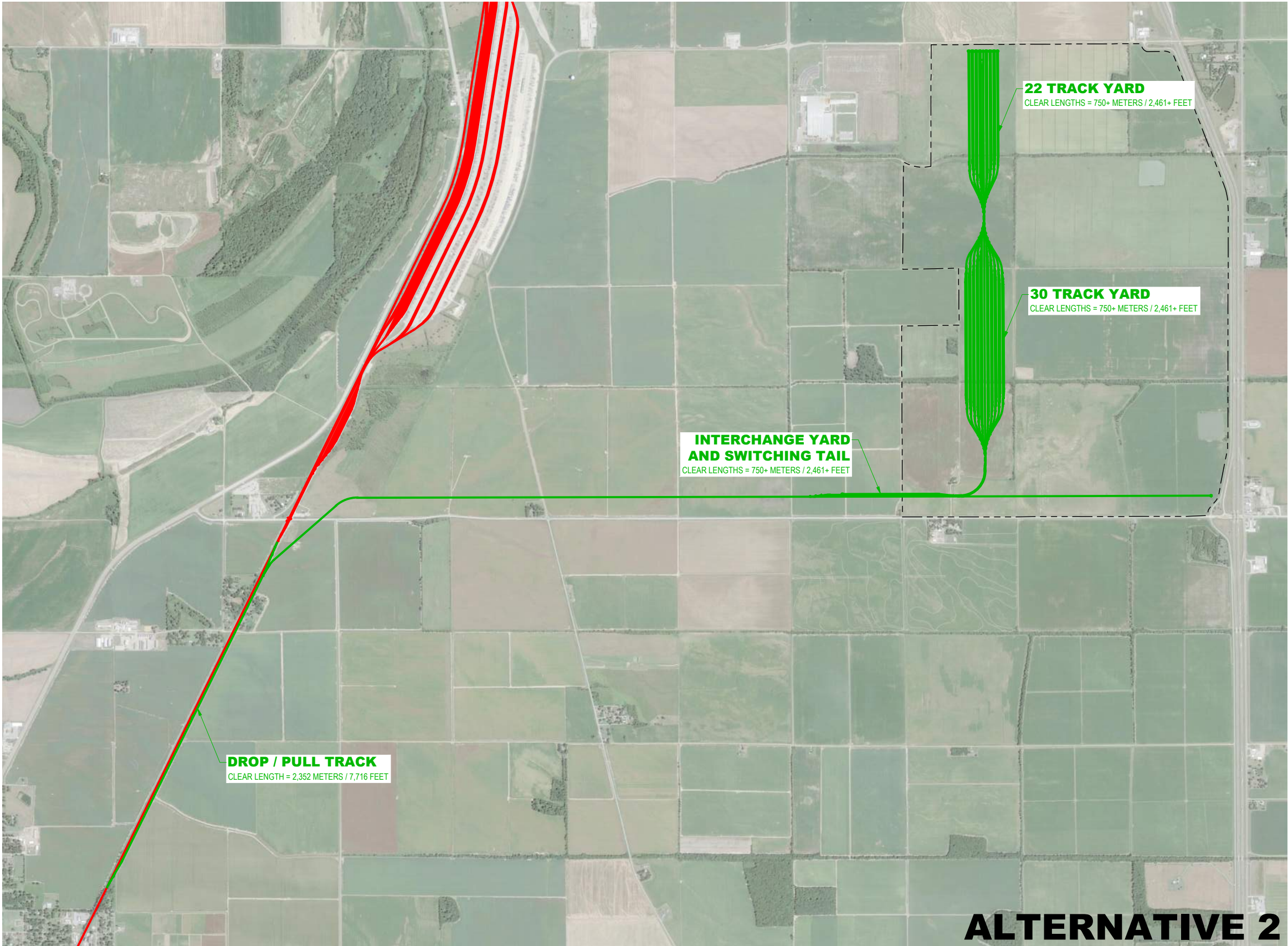
THIS DRAWING IS PRELIMINARY AND SUBJECT TO CHANGE DEPENDENT UPON SITE SURVEY, FINAL DESIGN, UTILITY COORDINATION, AND RAILROAD APPROVAL.

IF PROPERTY LINES ARE SHOWN ON THESE DRAWINGS, THE LOCATION SHOWN AND THE RELATIONSHIP WITH EXISTING AND PROPOSED IMPROVEMENTS ARE ONLY APPROXIMATE. NO ATTEMPT TO ANALYZE DEEDS, LOCATE EVIDENCES, DETERMINE EXACT LOCATION OF THE PROPERTY LINE WAS MADE. THIS DOES NOT CONSTITUTE A BOUNDARY SURVEY AND NO CLAIMS TO THE CORRECT LOCATION OF THE PROPERTY LINES ARE MADE BY SHOWING THE LINEWORK ON THESE DRAWINGS.

**UPRR DISCLAIMER:**

THE DESIGN CONCEPT IS FOR PRELIMINARY DISCUSSION PURPOSES ONLY. IT DOES NOT CONSTITUTE APPROVAL NOR A GUARANTEE TO PROVIDE ANY LEVEL OF SERVICE TO THIS LOCATION. THIS CONCEPT IS BASED ON AVAILABLE AERIAL IMAGERY AND DOES NOT CONSIDER MATTERS WHICH COULD IMPACT FEASIBILITY, INCLUDING WITHOUT LIMITATION UTILITIES, ENVIRONMENTAL CONDITIONS, PERMITTING, AND PROPERTY ISSUES. ULTIMATE FORMAL PROJECT DESIGN MUST MEET UNION PACIFIC'S TECHNICAL SPECIFICATIONS FOR CONSTRUCTION OF INDUSTRIAL TRACKS.

UPRR RIGHT-OF-WAY LINES ARE APPROXIMATE AND ARE DEPICTED FROM AERIAL IMAGERY.



ALTERNATIVE 2

REV #	BY	DATE	DESCRIPTION

EX UPRR TRACK

PROP UPRR TRACK

REMOVE UPRR TRACK

SHIFT UPRR TRACK

EX IND TRACK

PROP IND TRACK

REMOVE IND TRACK

SHIFT IND TRACK

FUTURE IND TRACK

PROP LEASED IND TRK

EX LEASED IND TRK

NO RR OPERATIONS

OTHER IND TRK

RIGHT OF WAY

HAND THROW TURNOUT

POWER TURNOUT

POWER DERAIL

HAND THROW DERAIL

POINT OF CURVE

BRIDGE

SIGNAL

CRS

ENGINEERS

Answers to Infrastructure®

4246 S Riverboat Rd, Ste 200 | Salt Lake City, UT 84123

P: 801.939.5565 | www.crsengineers.com

UNION PACIFIC

FES#:  
44681

DRAWN BY:  
T. BUHLER

CHECKED BY:  
D. EYRE

DATE:  
AUG 25, 2022

SHEET NUMBER  
2 OF 3

DOCUMENT TYPE:  
CONCEPT

UNION PACIFIC RAILROAD

FOR USE IN AGREEMENT WITH  
TBD

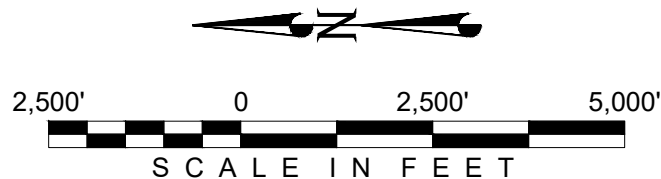
LOCATION & DESCRIPTION:  
MP 363, MEMPHIS SUBDIVISION  
WEST MEMPHIS, CRITTENDEN Co, AR  
TRACK TO SERVE: TBD

SHEET TITLE:  
ALTERNATIVE 2

CRS PROJECT NUMBER  
2019-0203

File Path: P:\2019-0203 West Memphis-RR North Megastate Design\Drawings\REF\2022 Concept 2.dwg Aug 25, 2022 - 5:27pm





# CONCEPTUAL

## FOR REVIEW / DISCUSSION

## NOT FOR CONSTRUCTION

**CRS DISCLAIMER:**

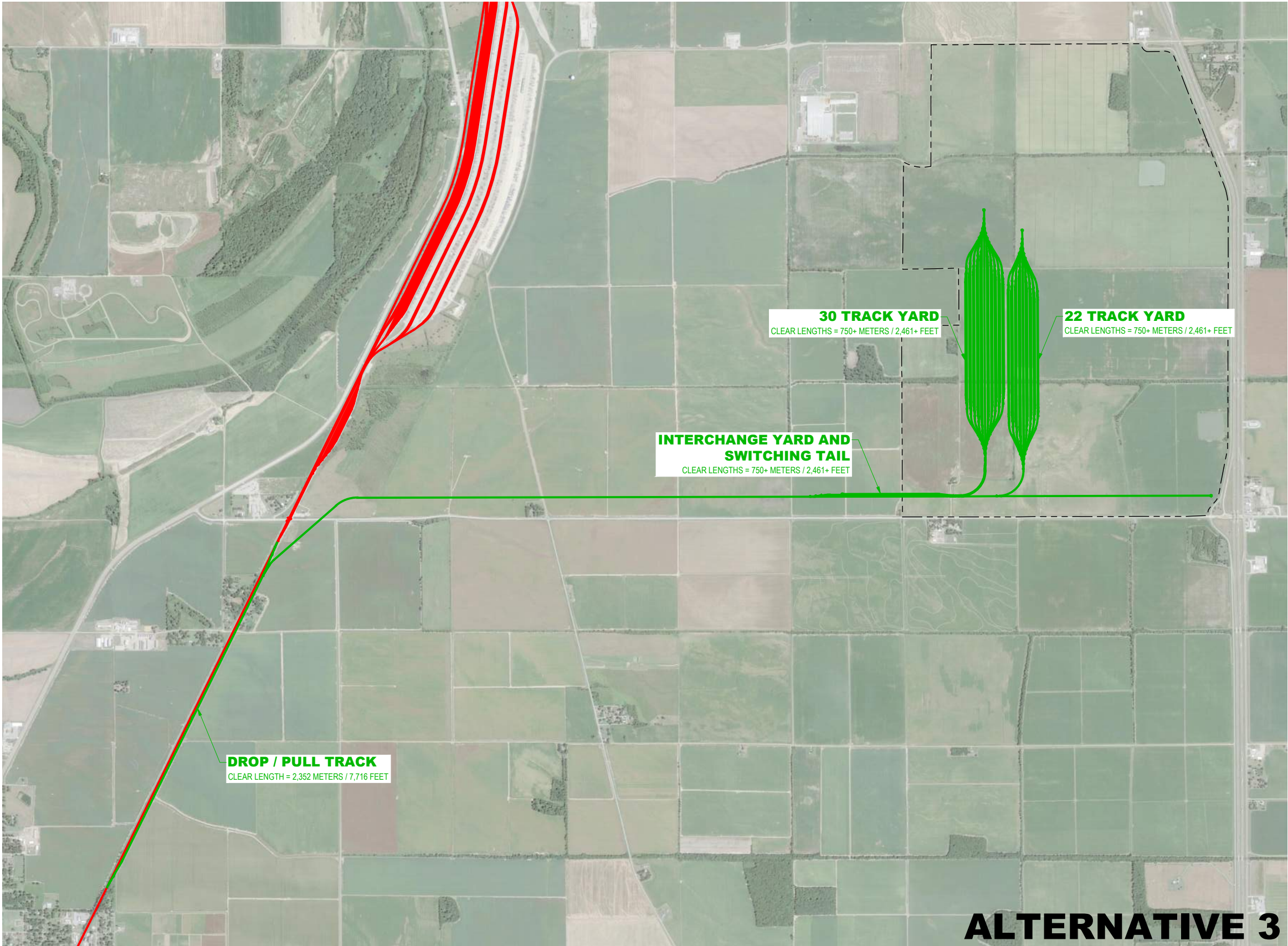
THIS DRAWING IS PRELIMINARY AND SUBJECT TO CHANGE DEPENDENT UPON SITE SURVEY, FINAL DESIGN, UTILITY COORDINATION, AND RAILROAD APPROVAL.

IF PROPERTY LINES ARE SHOWN ON THESE DRAWINGS, THE LOCATION SHOWN AND THE RELATIONSHIP WITH EXISTING AND PROPOSED IMPROVEMENTS ARE ONLY APPROXIMATE. NO ATTEMPT TO ANALYZE DEEDS, LOCATE EVIDENCES, DETERMINE EXACT LOCATION OF THE PROPERTY LINE WAS MADE. THIS DOES NOT CONSTITUTE A BOUNDARY SURVEY AND NO CLAIMS TO THE CORRECT LOCATION OF THE PROPERTY LINES ARE MADE BY SHOWING THE LINEWORK ON THESE DRAWINGS.

**UPRR DISCLAIMER:**

THE DESIGN CONCEPT IS FOR PRELIMINARY DISCUSSION PURPOSES ONLY. IT DOES NOT CONSTITUTE APPROVAL NOR A GUARANTEE TO PROVIDE ANY LEVEL OF SERVICE TO THIS LOCATION. THIS CONCEPT IS BASED ON AVAILABLE AERIAL IMAGERY AND DOES NOT CONSIDER MATTERS WHICH COULD IMPACT FEASIBILITY, INCLUDING WITHOUT LIMITATION UTILITIES, ENVIRONMENTAL CONDITIONS, PERMITTING, AND PROPERTY ISSUES. ULTIMATE FORMAL PROJECT DESIGN MUST MEET UNION PACIFIC'S TECHNICAL SPECIFICATIONS FOR CONSTRUCTION OF INDUSTRIAL TRACKS.

UPRR RIGHT-OF-WAY LINES ARE APPROXIMATE AND ARE DEPICTED FROM AERIAL IMAGERY.



# ALTERNATIVE 3

REV #	BY	DATE	DESCRIPTION

EX UPRR TRACK

PROP UPRR TRACK

REMOVE UPRR TRACK

SHIFT UPRR TRACK

EX IND TRACK

PROP IND TRACK

REMOVE IND TRACK

SHIFT IND TRACK

FUTURE IND TRACK

PROP LEASED IND TRK

EX LEASED IND TRK

NO RR OPERATIONS

OTHER IND TRK

RIGHT OF WAY

HAND THROW TURNOUT

POWER TURNOUT

POWER DERAIL

HAND THROW DERAIL

POINT OF CURVE

BRIDGE

SIGNAL

C

R

S

CRS ENGINEERS

Answers to Infrastructure®

4246 S Riverboat Rd, Ste 200 | Salt Lake City, UT 84123

P: 801.939.5565 | www.crsengineers.com

UNION PACIFIC

FES#:

44681

DRAWN BY:

T. BUHLER

CHECKED BY:

D. EYRE

DATE:

AUG 25, 2022

SHEET NUMBER

3 OF 3

DOCUMENT TYPE:

CONCEPT

FOR USE IN AGREEMENT WITH

TBD

LOCATION & DESCRIPTION:

MP 363, MEMPHIS SUBDIVISION

WEST MEMPHIS, CRITTENDEN Co, AR

TRACK TO SERVE: TBD

SHEET TITLE:

ALTERNATIVE 3

CRS PROJECT NUMBER

2019-0203