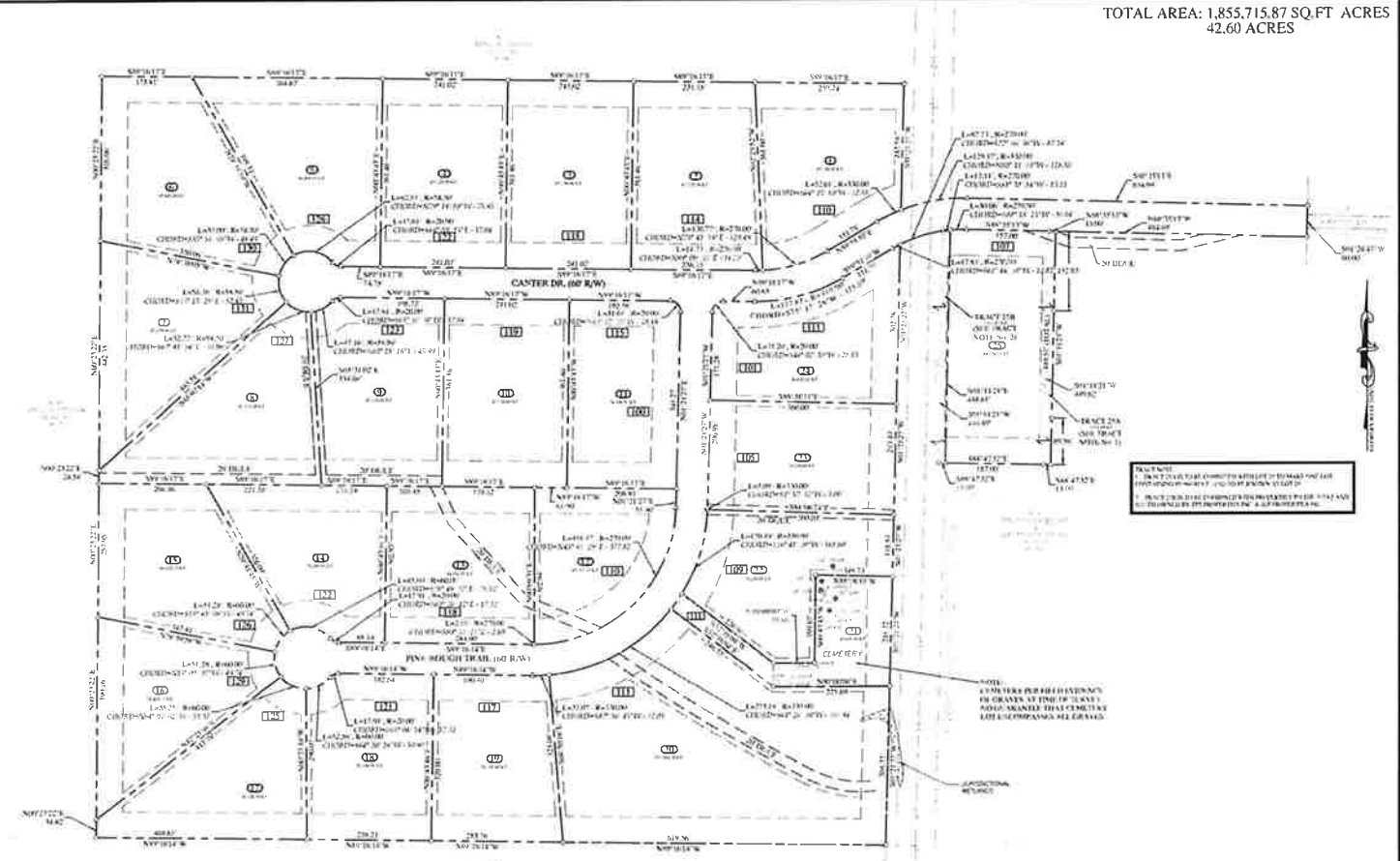


LEGEND

- 1. LOT
- 2. SUBDIVISION
- 3. TRAIL
- 4. DRIVE
- 5. ROAD
- 6. HIGHWAY
- 7. RAILROAD
- 8. CANAL
- 9. DRAINAGE
- 10. FENCE
- 11. UTILITY
- 12. EASEMENT
- 13. EASEMENT
- 14. EASEMENT
- 15. EASEMENT
- 16. EASEMENT
- 17. EASEMENT
- 18. EASEMENT
- 19. EASEMENT
- 20. EASEMENT
- 21. EASEMENT
- 22. EASEMENT
- 23. EASEMENT
- 24. EASEMENT
- 25. EASEMENT
- 26. EASEMENT
- 27. EASEMENT
- 28. EASEMENT
- 29. EASEMENT
- 30. EASEMENT
- 31. EASEMENT
- 32. EASEMENT
- 33. EASEMENT
- 34. EASEMENT
- 35. EASEMENT
- 36. EASEMENT
- 37. EASEMENT
- 38. EASEMENT
- 39. EASEMENT
- 40. EASEMENT
- 41. EASEMENT
- 42. EASEMENT
- 43. EASEMENT
- 44. EASEMENT
- 45. EASEMENT
- 46. EASEMENT
- 47. EASEMENT
- 48. EASEMENT
- 49. EASEMENT
- 50. EASEMENT
- 51. EASEMENT
- 52. EASEMENT
- 53. EASEMENT
- 54. EASEMENT
- 55. EASEMENT
- 56. EASEMENT
- 57. EASEMENT
- 58. EASEMENT
- 59. EASEMENT
- 60. EASEMENT
- 61. EASEMENT
- 62. EASEMENT
- 63. EASEMENT
- 64. EASEMENT
- 65. EASEMENT
- 66. EASEMENT
- 67. EASEMENT
- 68. EASEMENT
- 69. EASEMENT
- 70. EASEMENT
- 71. EASEMENT
- 72. EASEMENT
- 73. EASEMENT
- 74. EASEMENT
- 75. EASEMENT
- 76. EASEMENT
- 77. EASEMENT
- 78. EASEMENT
- 79. EASEMENT
- 80. EASEMENT
- 81. EASEMENT
- 82. EASEMENT
- 83. EASEMENT
- 84. EASEMENT
- 85. EASEMENT
- 86. EASEMENT
- 87. EASEMENT
- 88. EASEMENT
- 89. EASEMENT
- 90. EASEMENT
- 91. EASEMENT
- 92. EASEMENT
- 93. EASEMENT
- 94. EASEMENT
- 95. EASEMENT
- 96. EASEMENT
- 97. EASEMENT
- 98. EASEMENT
- 99. EASEMENT
- 100. EASEMENT



TOTAL AREA: 1,855,715.87 SQ. FT ACRES
42.60 ACRES

NOTES:
 1. THIS PLAN IS TO BE CONSIDERED AS A PRELIMINARY PLAN AND IS NOT TO BE USED FOR CONSTRUCTION OR RECORDING PURPOSES.
 2. THIS PLAN IS TO BE CONSIDERED AS A PRELIMINARY PLAN AND IS NOT TO BE USED FOR CONSTRUCTION OR RECORDING PURPOSES.

Plan Doc: PLAT
 Recorded On: 14/20/18 12:05PM
 JOE WILSON, Clerk Superior Court
 Peach County, GA
 BA 00029 Pg 0011
 File: 2018-004010139

MJM
 MARY J. MURPHY
 REGISTERED PROFESSIONAL SURVEYOR
 STATE OF GEORGIA
 No. 12345
 10/1/2018

Bryan Wood
 REGISTERED PROFESSIONAL SURVEYOR
 STATE OF GEORGIA
 No. 12345
 10/1/2018

100 200 0 100 200
 GRAPHIC SCALE IN FEET
 1" = 100'



100 Bull Street
 Peach County
 Office (478) 224-7070
 Fax (478) 224-7072
 WWW.MGLEADSURVEYING.COM



PROJECT	DATE
THE FARM PHASE 2	12/15/18
CLIENT	OWNER
JOHN DOE	JANE DOE

FINAL PLAT FOR
THE FARM PHASE 2
 PEACH COUNTY, GEORGIA

10/1/2018
 10/1/2018
 10/1/2018
 10/1/2018

10/1/2018
 10/1/2018
 10/1/2018
 10/1/2018

S-1.1