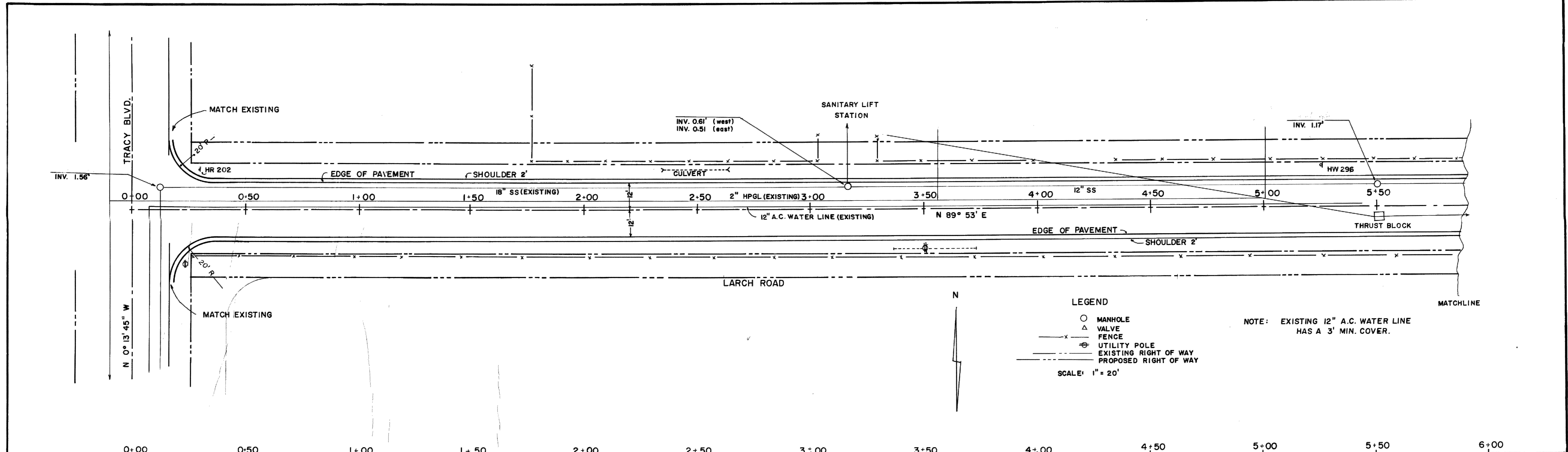


1973±

73-001

73-001

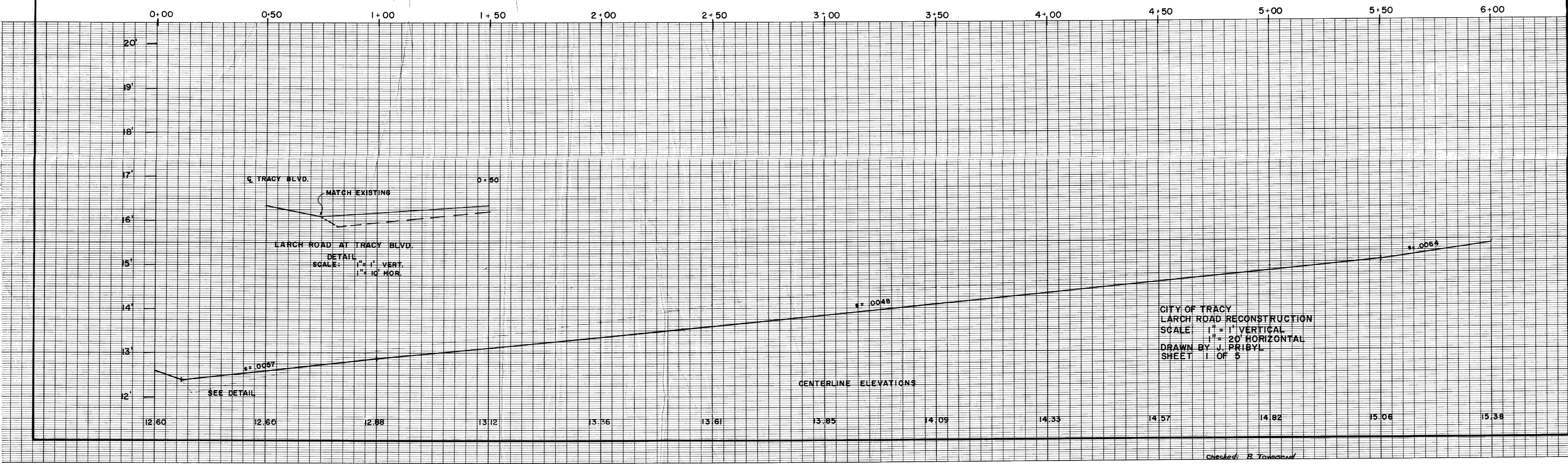


LEGEND

- MANHOLE
- △ VALVE
- FENCE
- ⊕ UTILITY POLE
- - - EXISTING RIGHT OF WAY
- PROPOSED RIGHT OF WAY

SCALE: 1" = 20'

NOTE: EXISTING 12" A.C. WATER LINE HAS A 3' MIN. COVER.

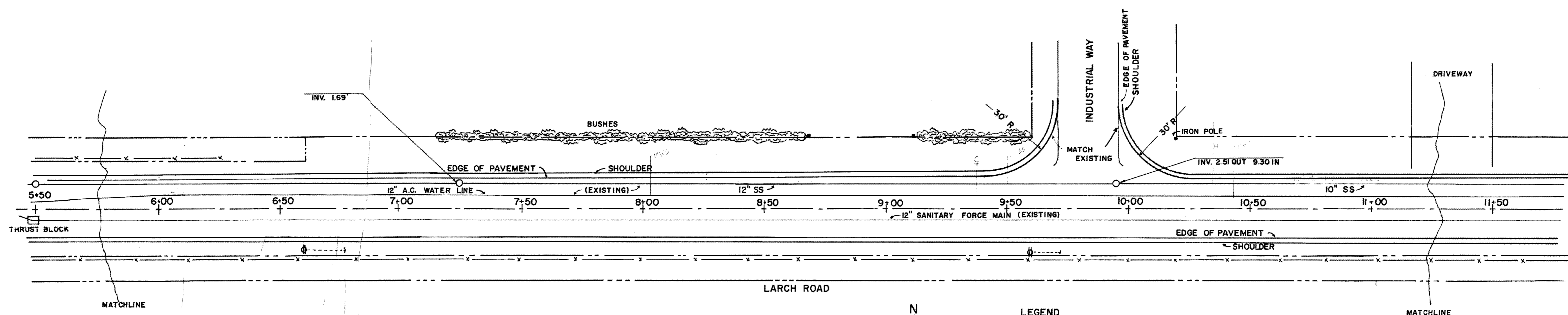


CITY OF TRACY
 LARCH ROAD RECONSTRUCTION
 SCALE: 1" = 1' VERTICAL
 1" = 20' HORIZONTAL
 DRAWN BY J. PRIBYL
 SHEET 1 OF 5

Checked: B. Townsend

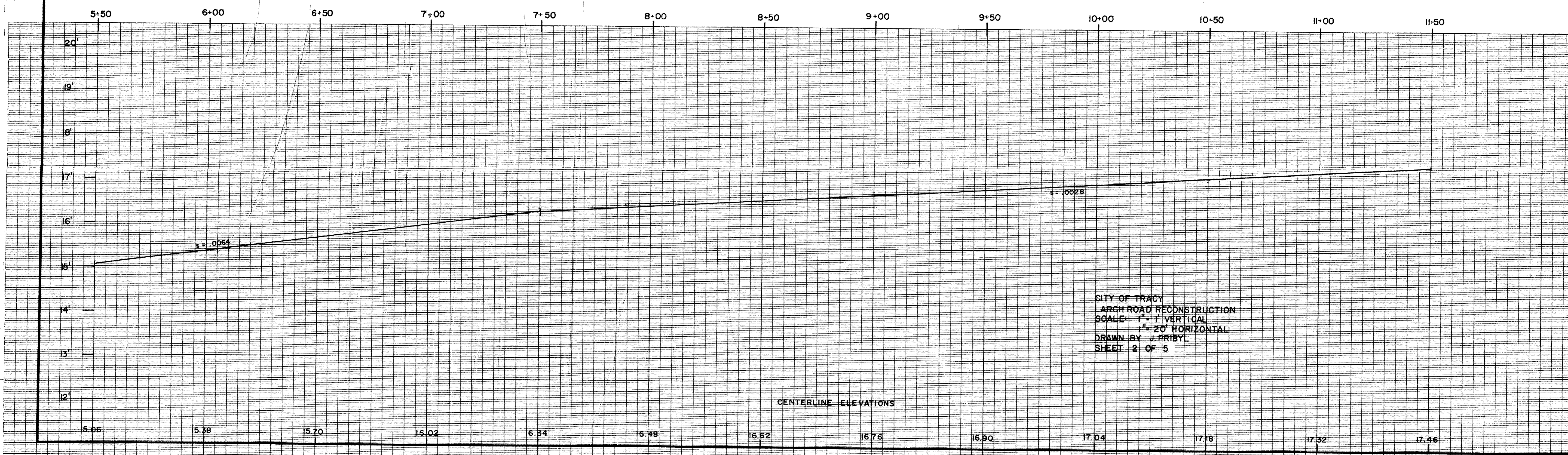
73-002

73-002



LEGEND

- MANHOLE
 - △ VALVE
 - x— FENCE
 - ⊕ UTILITY POLE
 - — — EXISTING RIGHT OF WAY
 - — — PROPOSED RIGHT OF WAY
- SCALE: 1" = 20' HORIZONTAL

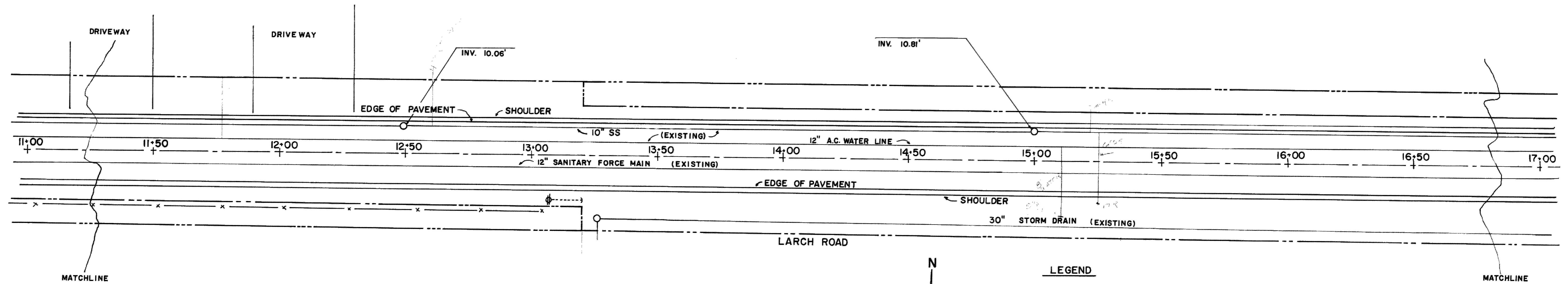


CITY OF TRACY
 LARCH ROAD RECONSTRUCTION
 SCALE: 1" = 1' VERTICAL
 1" = 20' HORIZONTAL
 DRAWN BY J. PRIBYL
 SHEET 2 OF 5

CENTERLINE ELEVATIONS

73-003

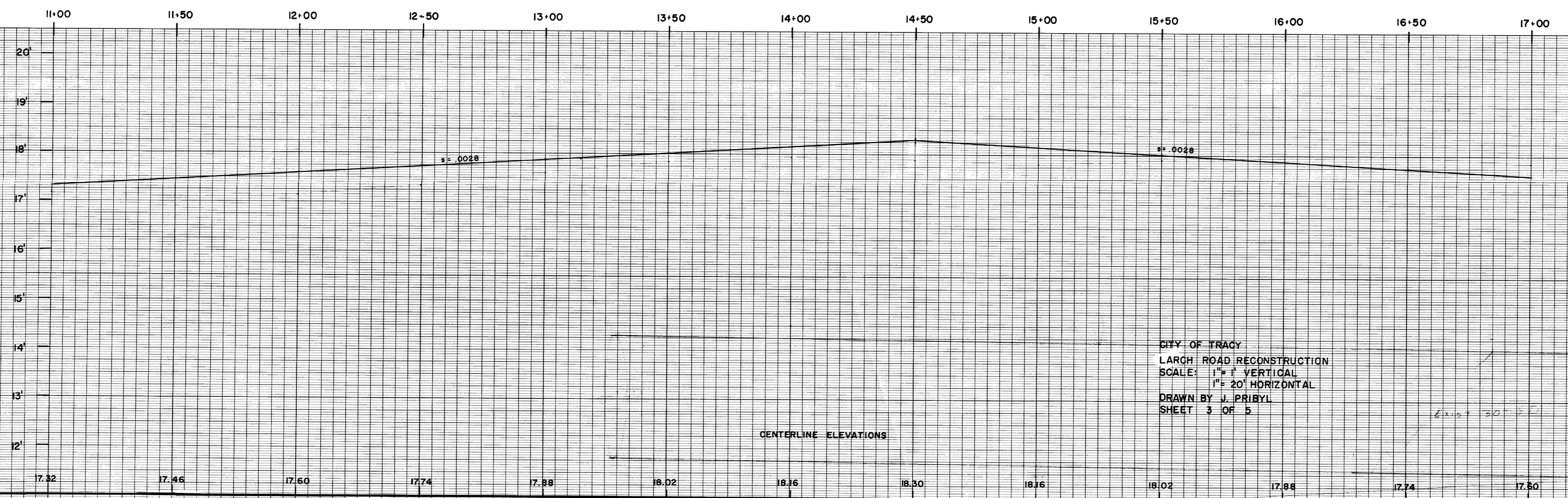
73-003



LEGEND

- MANHOLE
- △ VALVE
- FENCE
- ⊕ UTILITY POLE
- - - EXISTING RIGHT OF WAY
- PROPOSED RIGHT OF WAY

SCALE: 1" = 20'



CITY OF TRACY
 LARCH ROAD RECONSTRUCTION
 SCALE: 1" = 1' VERTICAL
 1" = 20' HORIZONTAL
 DRAWN BY J. PRIBYL
 SHEET 3 OF 5

Checked: B. Townsend

73-004

73-004

CHARLES BRUNING COMPANY
PROFILE PLATE A
PRINTED IN U.S.A.

CHARLES BRUNING COMPANY
PROFILE PLATE A
PRINTED IN U.S.A.

Checked: B. Townsend

CITY OF TRACY
LARCH ROAD RECONSTRUCTION
SCALE: 1" = 1' VERTICAL
1" = 20' HORIZONTAL
DRAWN BY J. PRIBYL
SHEET 4 OF 5

CENTERLINE ELEVATIONS

