

4.5 ACRE COMMERCIAL PARCEL IN THE TOWN OF SHENANDOAH

420 S Third Street, Shenandoah, VA 22849

Executive Summary



OFFERING SUMMARY

Sale Price:	\$450,000
Lot Size:	4.51 Acres
Zoning:	C1
Utilities:	Public Water Public Sewer
MLS#:	667644



PROPERTY OVERVIEW

Large 4.5 ac. commercial parcel in the town limits of Shenandoah. The existing structure was formerly used as a pharmacy and dentist office. The building is in poor condition but could be renovated and used. Great location for a grocery store or discount store or car lot or storage units or maybe you have a different use in mind. The potential exists to rezone and consider a more residential or industrial use. Great location with the possibility to divide and get creative. Bring your ideas and come check it out!

For More Information:

Jeremy Litwiller

540.421.8293

jeremy.litwiller@cottonwood.com

COTTONWOOD

COMMERCIAL

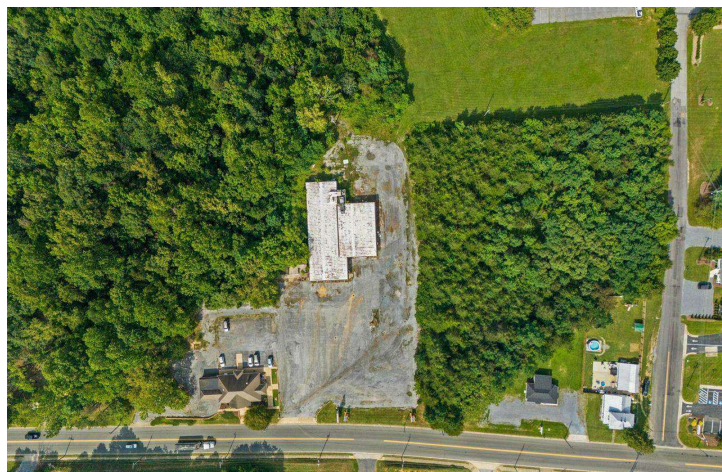
A COMMERCIAL REAL ESTATE BROKERAGE

We obtained the information above from sources we believe to be reliable. However, we have not verified its accuracy and make no guarantee, warranty or representation about it. It is submitted subject to the possibility of errors, omissions, change of price, rental or other conditions, prior sale, lease or financing, or withdrawal without notice. We include projections, opinions, assumptions or estimates for example only, and they may not represent current or future performance of the property. You and your tax and legal advisors should conduct your own investigation of the property and transaction.

4.5 ACRE COMMERCIAL PARCEL IN THE TOWN OF SHENANDOAH

420 S Third Street, Shenandoah, VA 22849

Aerial Photos



For More Information:

Jeremy Litwiller

540.421.8293

jeremy.litwiller@cottonwood.com

COTTONWOOD
COMMERCIAL
A COMMERCIAL REAL ESTATE BROKERAGE

We obtained the information above from sources we believe to be reliable. However, we have not verified its accuracy and make no guarantee, warranty or representation about it. It is submitted subject to the possibility of errors, omissions, change of price, rental or other conditions, prior sale, lease or financing, or withdrawal without notice. We include projections, opinions, assumptions or estimates for example only, and they may not represent current or future performance of the property. You and your tax and legal advisors should conduct your own investigation of the property and transaction.

4.5 ACRE COMMERCIAL PARCEL IN THE TOWN OF SHENANDOAH

420 S Third Street, Shenandoah, VA 22849

Exterior Photos



For More Information:

Jeremy Litwiller

540.421.8293

jeremy.litwiller@cottonwood.com

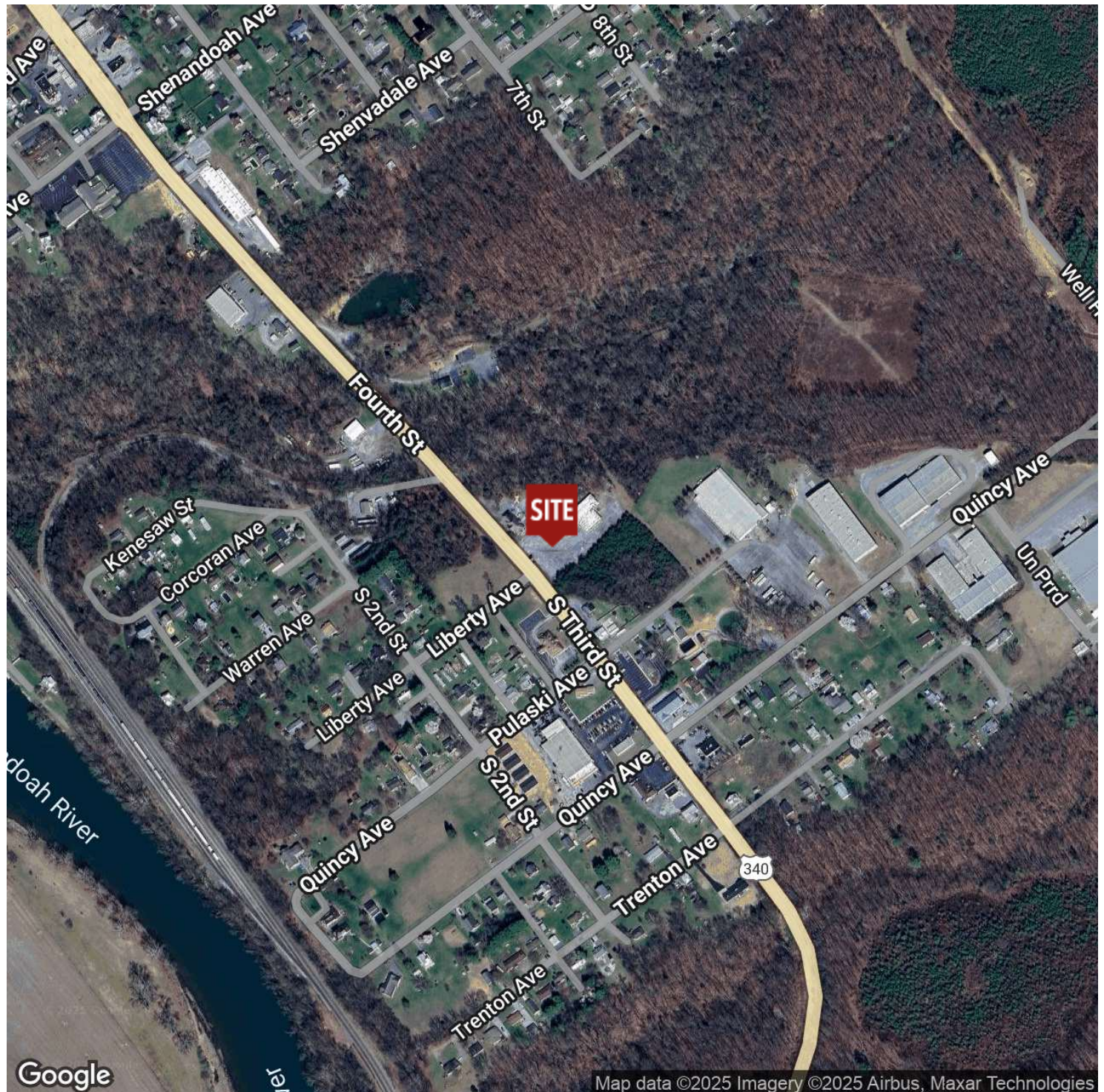
COTTONWOOD
COMMERCIAL
A COMMERCIAL REAL ESTATE BROKERAGE

We obtained the information above from sources we believe to be reliable. However, we have not verified its accuracy and make no guarantee, warranty or representation about it. It is submitted subject to the possibility of errors, omissions, change of price, rental or other conditions, prior sale, lease or financing, or withdrawal without notice. We include projections, opinions, assumptions or estimates for example only, and they may not represent current or future performance of the property. You and your tax and legal advisors should conduct your own investigation of the property and transaction.

4.5 ACRE COMMERCIAL PARCEL IN THE TOWN OF SHENANDOAH

420 S Third Street, Shenandoah, VA 22849

Location Map



For More Information:

Jeremy Litwiller

540.421.8293

jeremy.litwiller@cottonwood.com

COTTONWOOD
COMMERCIAL
A COMMERCIAL REAL ESTATE BROKERAGE

We obtained the information above from sources we believe to be reliable. However, we have not verified its accuracy and make no guarantee, warranty or representation about it. It is submitted subject to the possibility of errors, omissions, change of price, rental or other conditions, prior sale, lease or financing, or withdrawal without notice. We include projections, opinions, assumptions or estimates for example only, and they may not represent current or future performance of the property. You and your tax and legal advisors should conduct your own investigation of the property and transaction.