

JOIN GOODWILL RETAIL



PROPERTY DESCRIPTION

- ❖ New Falcon Construction!
- ❖ Join the New 124,000 SF
King Soopers Marketplace NOW OPEN!
- ❖ Fast Growing Area!
- ❖ Adjacent to New 23,000 SF GOODWILL
- ❖ Ready for New Owner/Tenant
- ❖ Space has dedicated, full size loading dock.

James E Spittler Jr., SIOR

Founder | Principal
+1 719 667 6877
• spittler@highlandcommercial.com

John C. Onstott

Principal | Senior Broker
+1 719 330 1819
• onstott@highlandcommercial.com

Darek Bartol

Associate Broker
+1 727 631 2554
• bartol@highlandcommercial.com

PROPERTY FEATURES

- ❖ 14,568 SF AVAILABLE FOR SALE
or LEASE
- ❖ SALES PRICE: CONTACT BROKER
FOR PRICING
- ❖ LEASE RATE: CONTACT BROKER
FOR PRICING

[Click To View Property
Photos & Drone Video](#)

[Click Here To See Why
Goodwill Is A Great Co-Tenant](#)

[Click To View
Property Overview](#)

NEIGHBORHOOD DEMOGRAPHICS



1 Mile	4,995
3 Miles	26,484
5 Miles	58,491



HOUSEHOLD

1,633

8,371

18,913



1 Mile	\$132,660
3 Miles	\$135,157
5 Miles	\$134,405



ANNUAL GROWTH
2024 TO 2029

0.9%

1.1%

1.3%



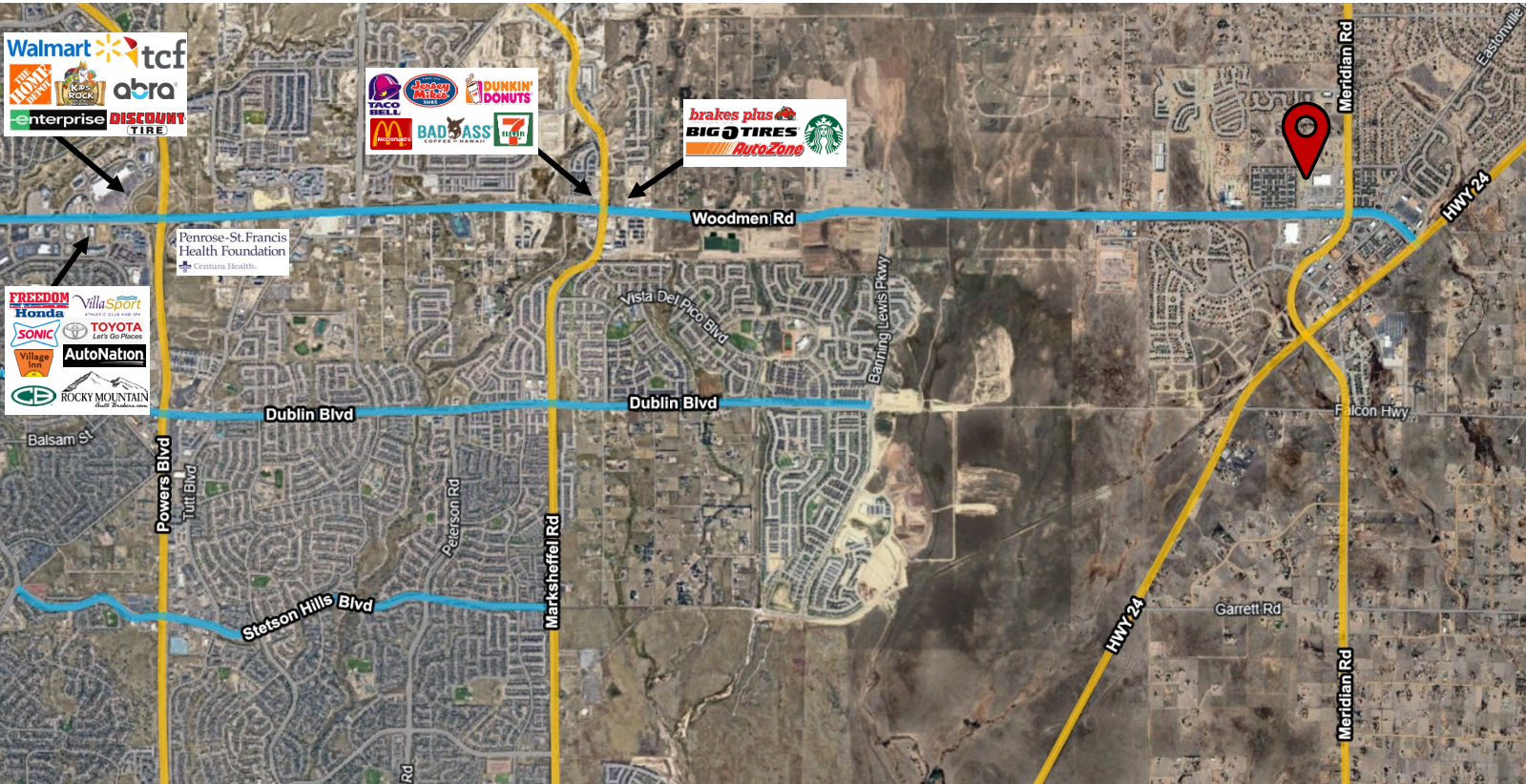
41,000 v.p.d. (2025)	34,000 v.p.d. (2025)
Woodmen Rd (E&W)	Meridian Rd (N&S)



NEIGHBORING RETAIL AERIAL



Location in Relation to Powers Blvd



Location in Relation to I-25

