

SUNSET PLAZA AVAILABLE FOR LEASE



HIGHLIGHTS

- Multi-Tenant Retail, Office, Medical Plaza
- Each suite has direct, private entrances
- Prominent building and monument signage
- Excellent 57 Fwy visibility with over 145,000 VPD
- Ideal Diamond Bar location with 185' of street frontage
- Great curb appeal and easy to access location
- Abundant onsite parking
- Suite 560 is two-story, no elevator

SUITE	SQ. FT.	RATE
564	±687	\$2.85 PSF/Mo. NNN
576	±315	\$3.05 PSF/Mo. NNN



PROPERTY DETAILS

Building Size	±3,400 SF
Lot Size	±30,400 SF
Year Built	1968/1981
Parking Ratio	7.88/1,000

For more information please contact:

CHRISTOPHER LARIMORE

Founding Principal
 D • 626.240.2788
 E • clarimore@lee-associates.com
 LICENSE ID #01314464

VINCENT MOLITOR

Founding Principal
 D • 626.240.2787
 E • vmolitor@lee-associates.com
 LICENSE ID #01295360

LEE & ASSOCIATES - PASADENA, INC.
 1055 E. Colorado Blvd., Suite 330
 Pasadena, CA 91106
 Corporate ID 02059558
 lee-pasadena.com

SUNSET PLAZA AVAILABLE FOR LEASE



For more information please contact:

CHRISTOPHER LARIMORE

Founding Principal
 D • 626.240.2788
 E • clarimore@lee-associates.com
 LICENSE ID #01314464

VINCENT MOLITOR

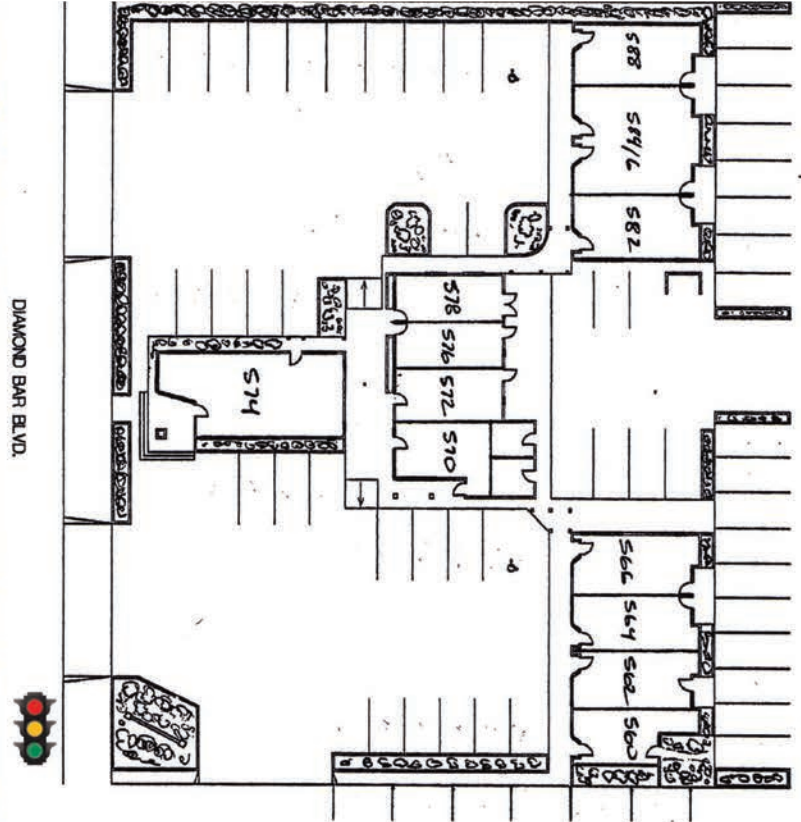
Founding Principal
 D • 626.240.2787
 E • vmolitor@lee-associates.com
 LICENSE ID #01295360

LEE & ASSOCIATES - PASADENA, INC.

1055 E. Colorado Blvd., Suite 330
 Pasadena, CA 91106
 Corporate ID 02059558
 lee-pasadena.com

SUNSET PLAZA AVAILABLE FOR LEASE

SITE PLAN



For more information please contact:

CHRISTOPHER LARIMORE

Founding Principal

D • 626.240.2788

E • clarimore@lee-associates.com

LICENSE ID #01314464

VINCENT MOLITOR

Founding Principal

D • 626.240.2787

E • vmolitor@lee-associates.com

LICENSE ID #01295360

LEE & ASSOCIATES - PASADENA, INC.

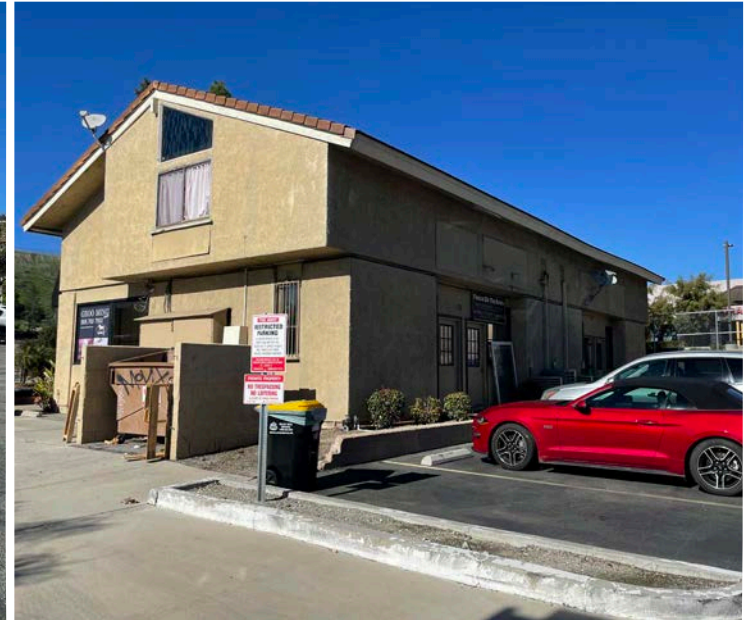
1055 E. Colorado Blvd., Suite 330

Pasadena, CA 91106

Corporate ID 02059558

lee-pasadena.com

SUNSET PLAZA AVAILABLE FOR LEASE



For more information please contact:

CHRISTOPHER LARIMORE

Founding Principal
 D • 626.240.2788
 E • clarimore@lee-associates.com
 LICENSE ID #01314464

VINCENT MOLITOR

Founding Principal
 D • 626.240.2787
 E • vmolitor@lee-associates.com
 LICENSE ID #01295360

LEE & ASSOCIATES - PASADENA, INC.

1055 E. Colorado Blvd., Suite 330
 Pasadena, CA 91106
 Corporate ID 02059558
 lee-pasadena.com