



Corporate Woods Business Park FOR LEASE

5029 & 5041 Corporate Woods Dr, Virginia Beach, VA



B. Gray Randolph, SIOR
Principal
757.560.0993
gray@7hillscre.com

PROPERTY HIGHLIGHTS

Property Overview:

Corporate Woods Office Park is conveniently located in the heart of Virginia Beach, just minutes from I-264 and I-64, Norfolk International Airport, Downtown Norfolk, Chesapeake, the Virginia Beach Oceanfront, and less than 3 miles from Town Center of Virginia Beach. All common areas have been recently renovated and the professional landscaping surrounding the property has been updated. This award-winning office park is home to the Chadwick, Grayson and Samuel White Law Buildings.

Features and Specifications:

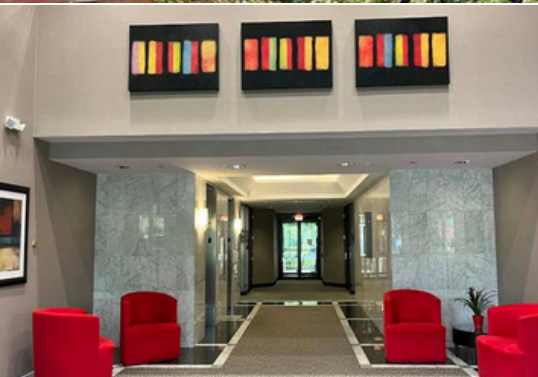
- Abundant parking available
- Professional landscaping
- Building conference space available to all tenants in both buildings
- All common areas have been recently renovated
- Attractive glass design, including two-story marble atrium
- Adjacent to the Simon Family Jewish Community Center (JCC)
- Easy interstate access
- Less than three (3) miles from the Town Center of Virginia Beach
- Three (3) to five (5) year lease terms available
- **Lease rate: \$19.50 / sf, Full Service**



CHADWICK

Rentable Areas (approx):

Suite C215	+/-5,889 rsf
Suite C301	+/-4,973 rsf

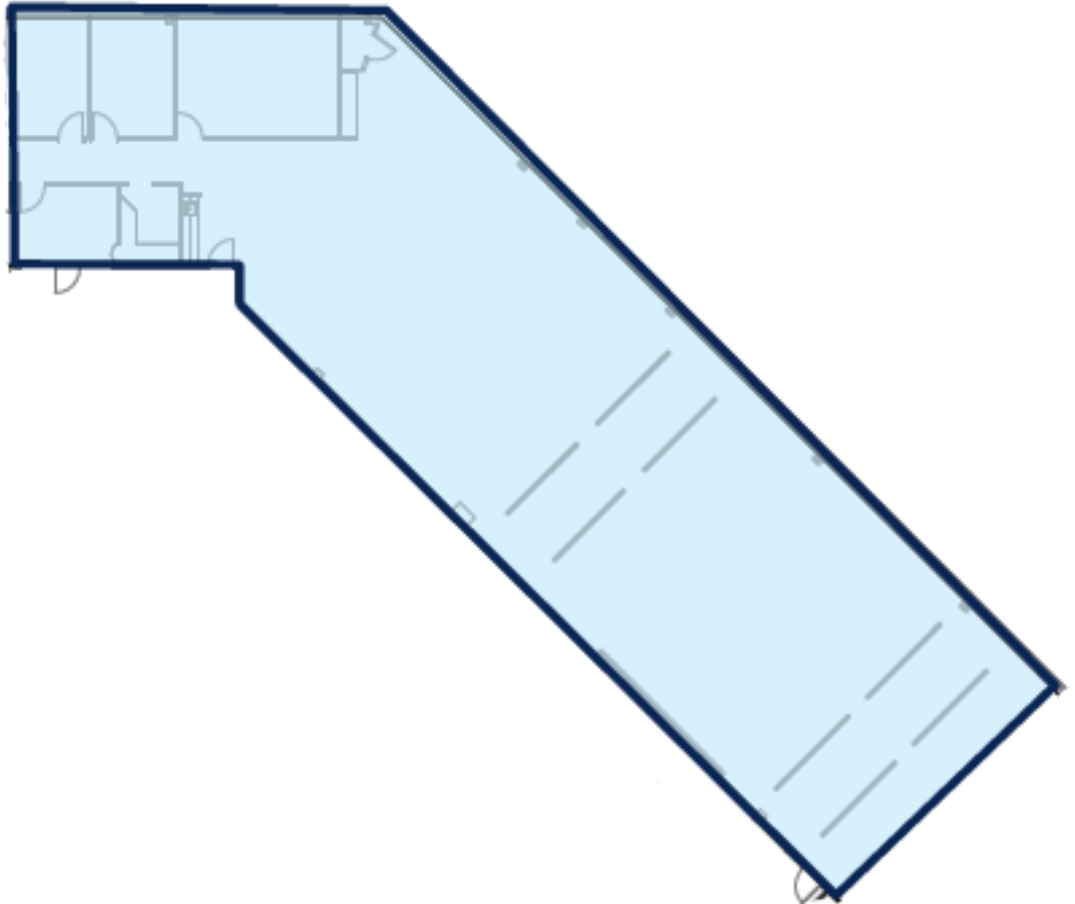


CHADWICK

Second Floor:

Suite C215

+/-5,889 rsf



Suite 215

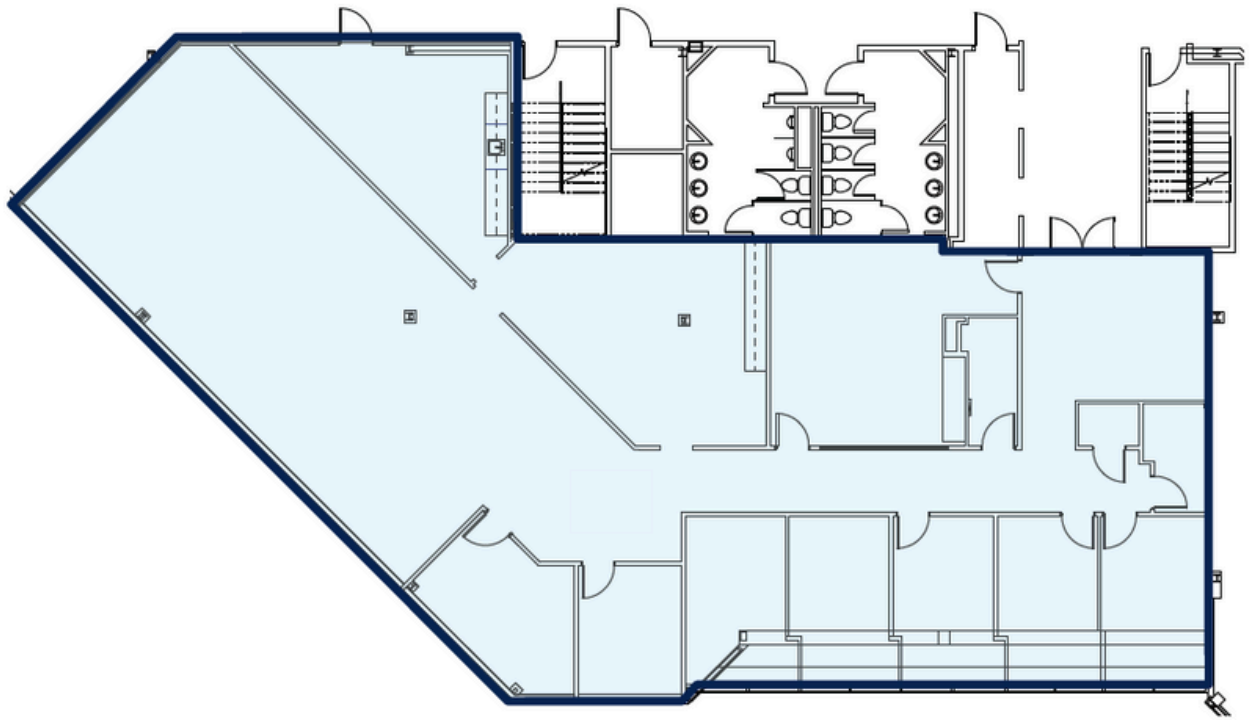


CHADWICK

Third Floor:

Suite C301

+/-4,973 rsf



GRAYSON

Rentable Areas (approx):

Suite G200

+/-6,544 rsf



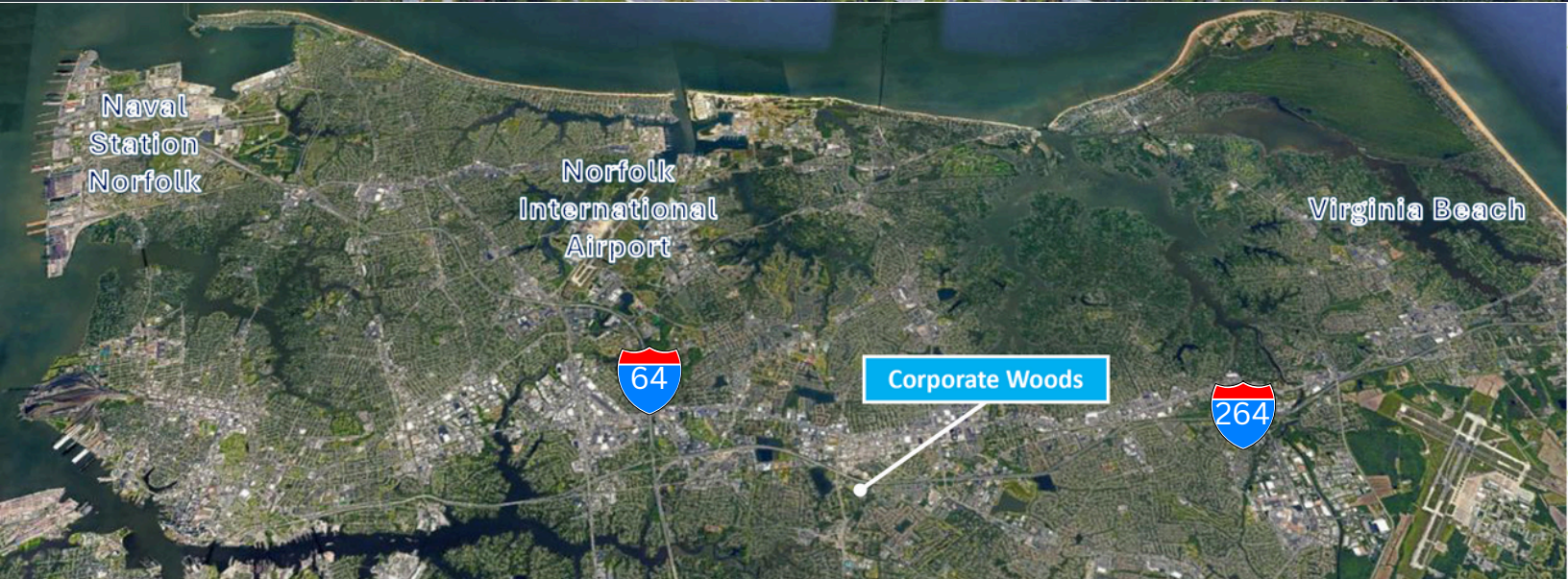
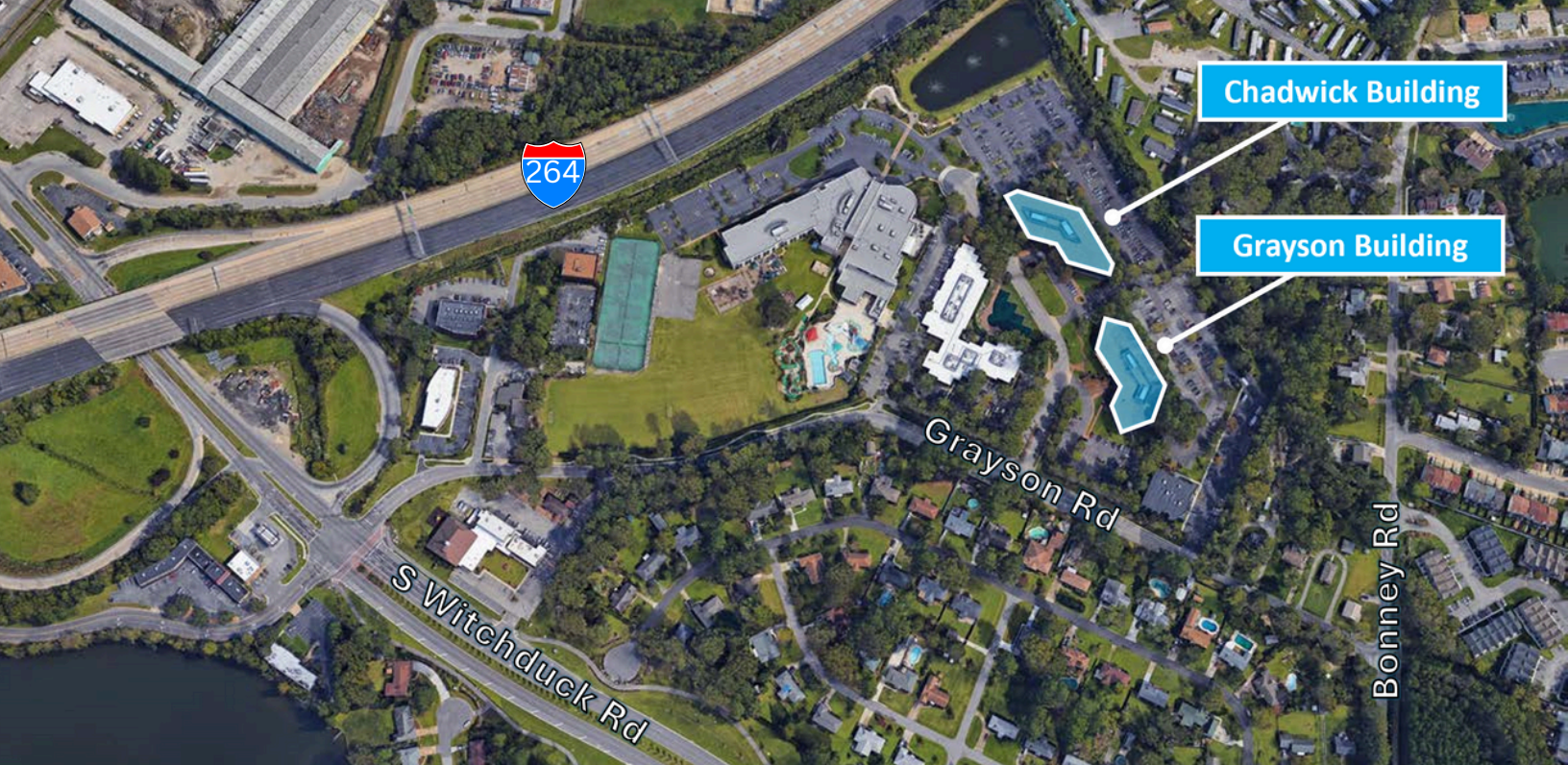
GRAYSON

Second Floor:

Suite G200

+/-6,544 rsf





CONTACT US:



2404 POTTERS RD SUITE 600
VIRGINIA BEACH, VA 23454

B. Gray Randolph, SIOR

Principal

757.560.0993

gray@7hillscre.com