

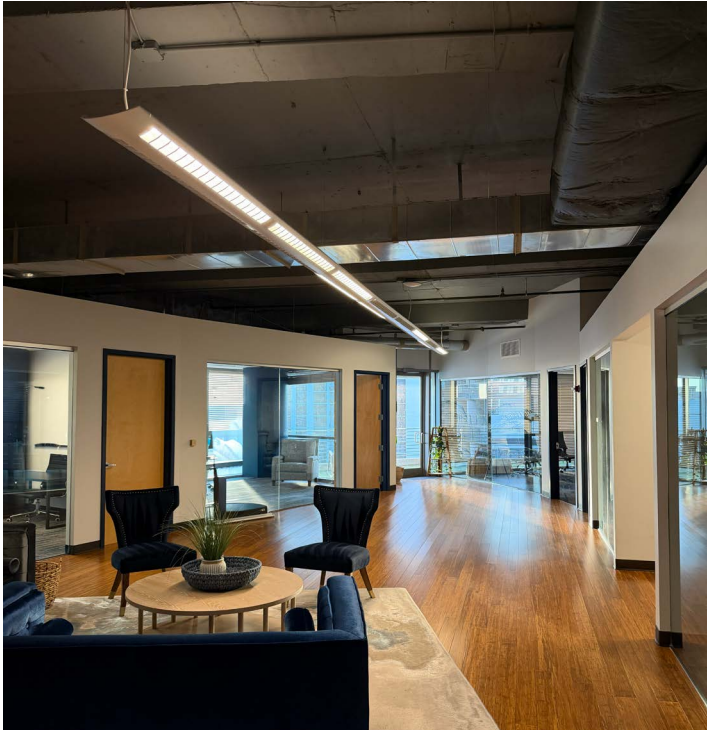


For Sale

121 S Orange Ave | Suite 1200
Orlando, FL 32801

±6,206 SF Available

Sale Available now 6,206 SF



Total building size 500,000 SF



Class A building



Ideally situated in Orlando CBD



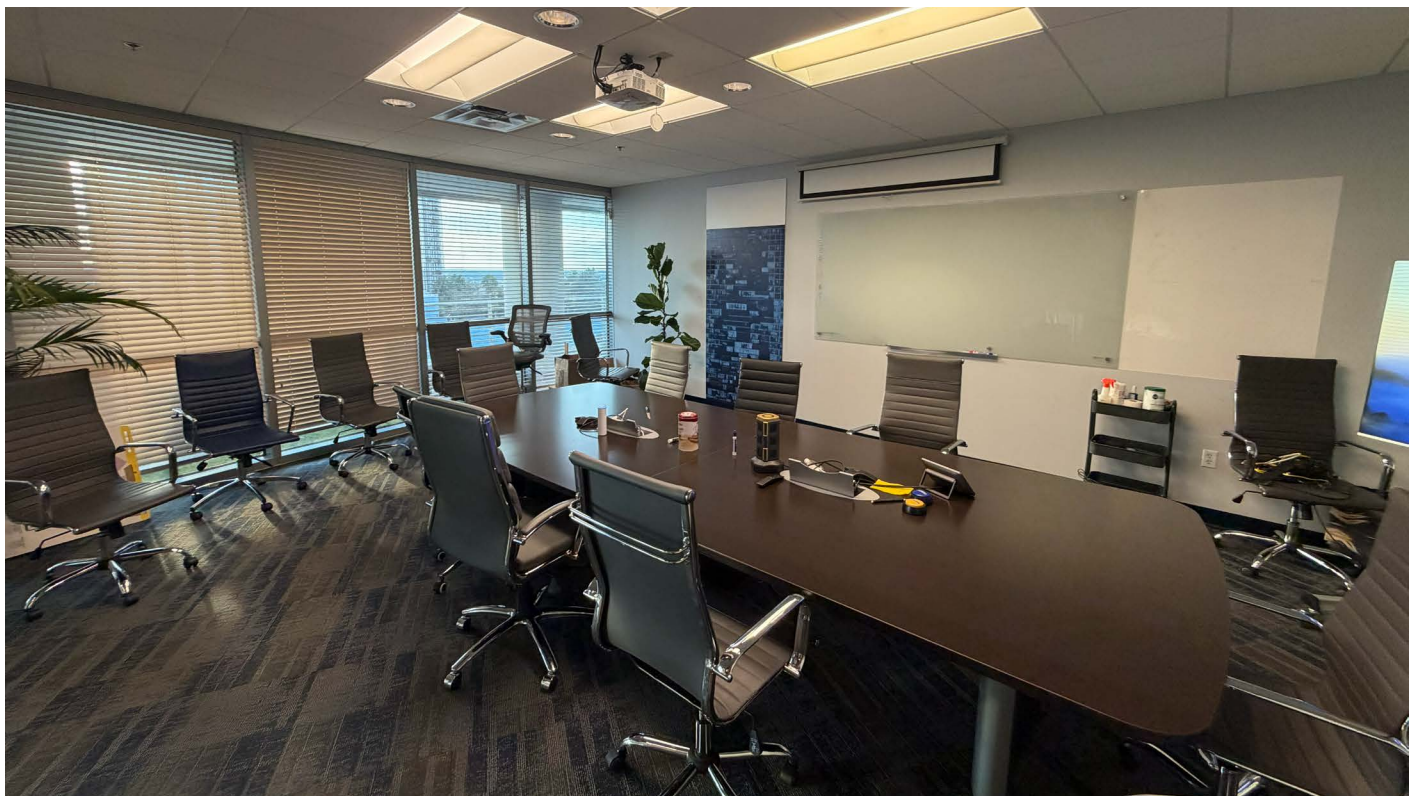
Includes private offices, a private balcony, conference room, and open collaborative space



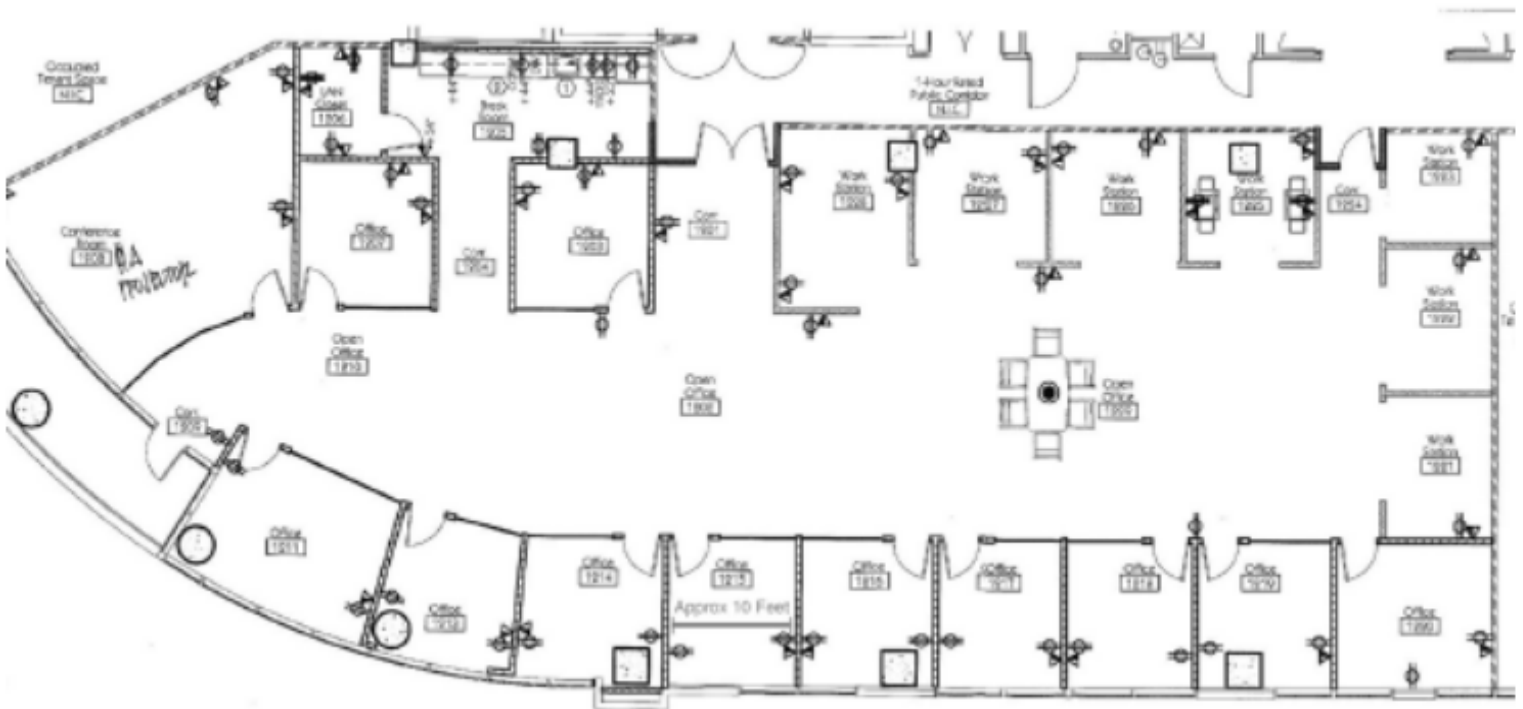
Modern finishes, large glass windows, with a contemporary layout



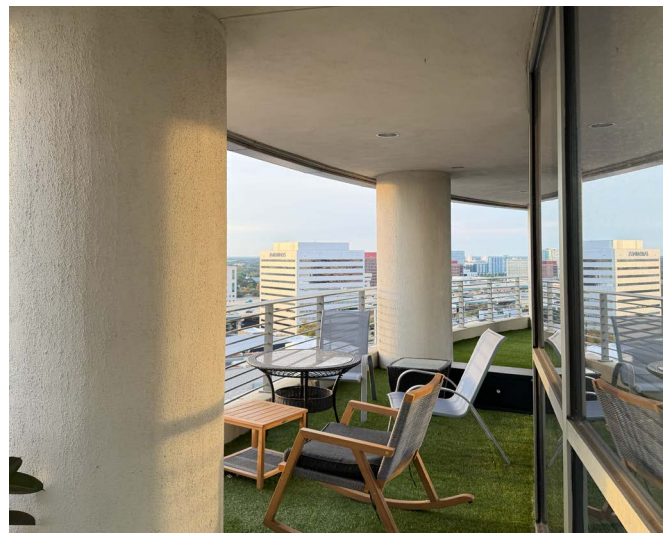
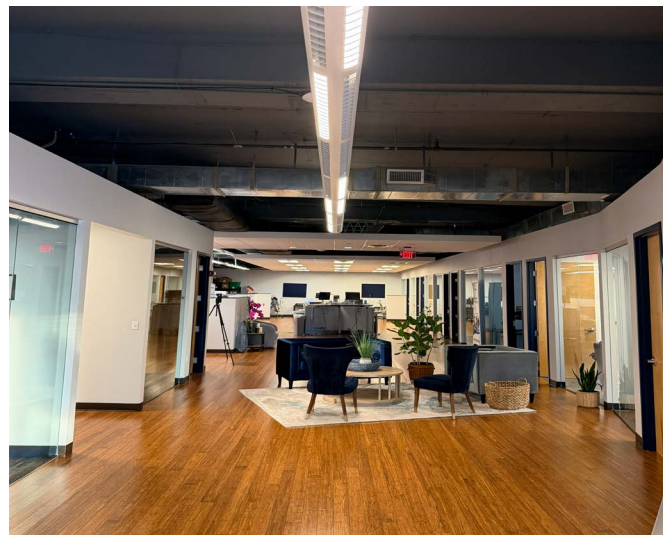
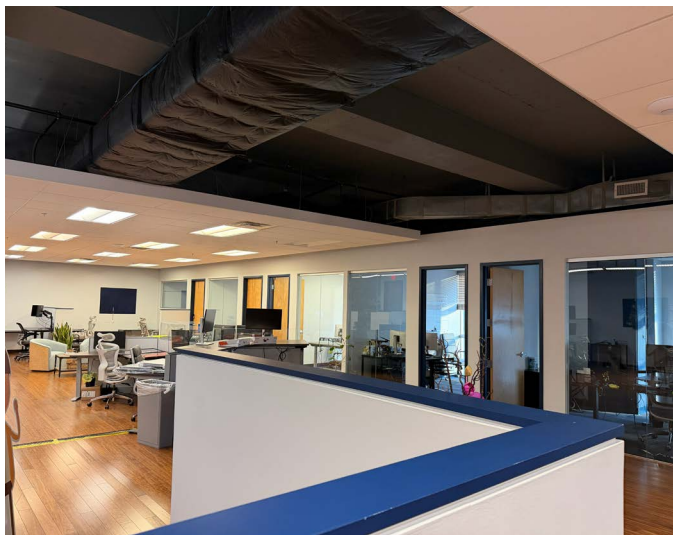
Listed at \$1,550,000

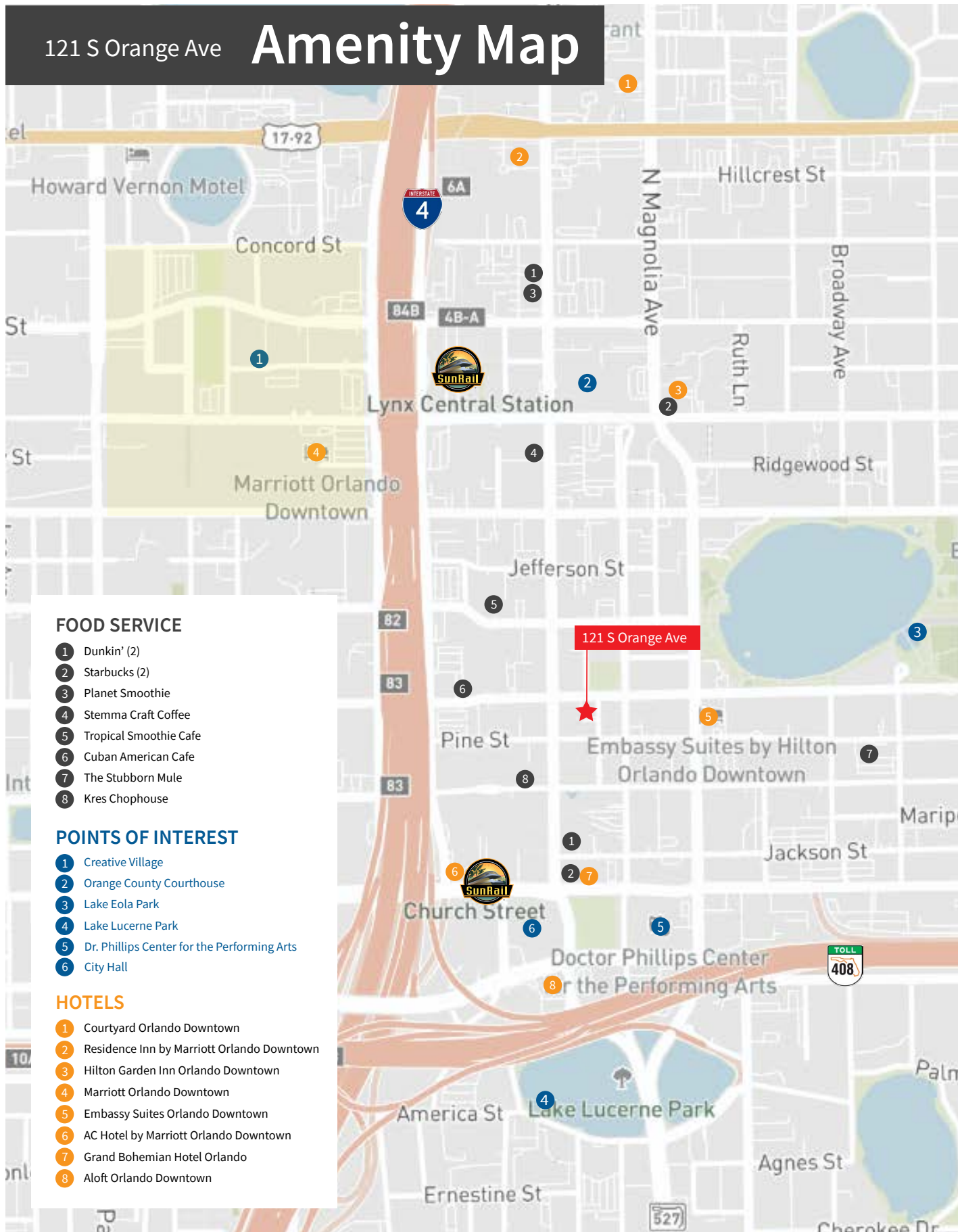


Suite 1200 floor plan



[Click here for virtual tour](#)





JLL.com

Cody Manzella

Executive Vice President

cody.manzella@jll.com

+1 407 988 7288

Nathan Eissler

Executive Vice President

nathan.eissler@jll.com

+1 407 342 7494