



**FOR
LEASE**

Park 37

5233 I.H. 37, Corpus Christi, TX 78408

**1,800 sq foot warehouse suite for lease plus
6,000 or 6,600 sq foot fenced and paved outside
storage yards for lease**



Jack and Ben Super
SuperTex Properties L.P.
Super Commercial Properties
4531 Ayers Street, Suite 201, Corpus Christi, TX 78415
(361) 853-3003 Fax: (361) 853-9141 cell: (361) 215-8018



SuperTex Properties

4531 Ayers, Suite 201

Corpus Christi, Texas 78415

Phone (361) 853-3003 Fax: (361) 853-9141

zjsuper@gmail.com

For Lease

Park 37

1,800 sq foot warehouse suite for lease plus
6,000 or 6,600 sq foot fenced and paved
outside storage yards for lease

Address: 5233 I.H. 37, Corpus Christi, TX 78408

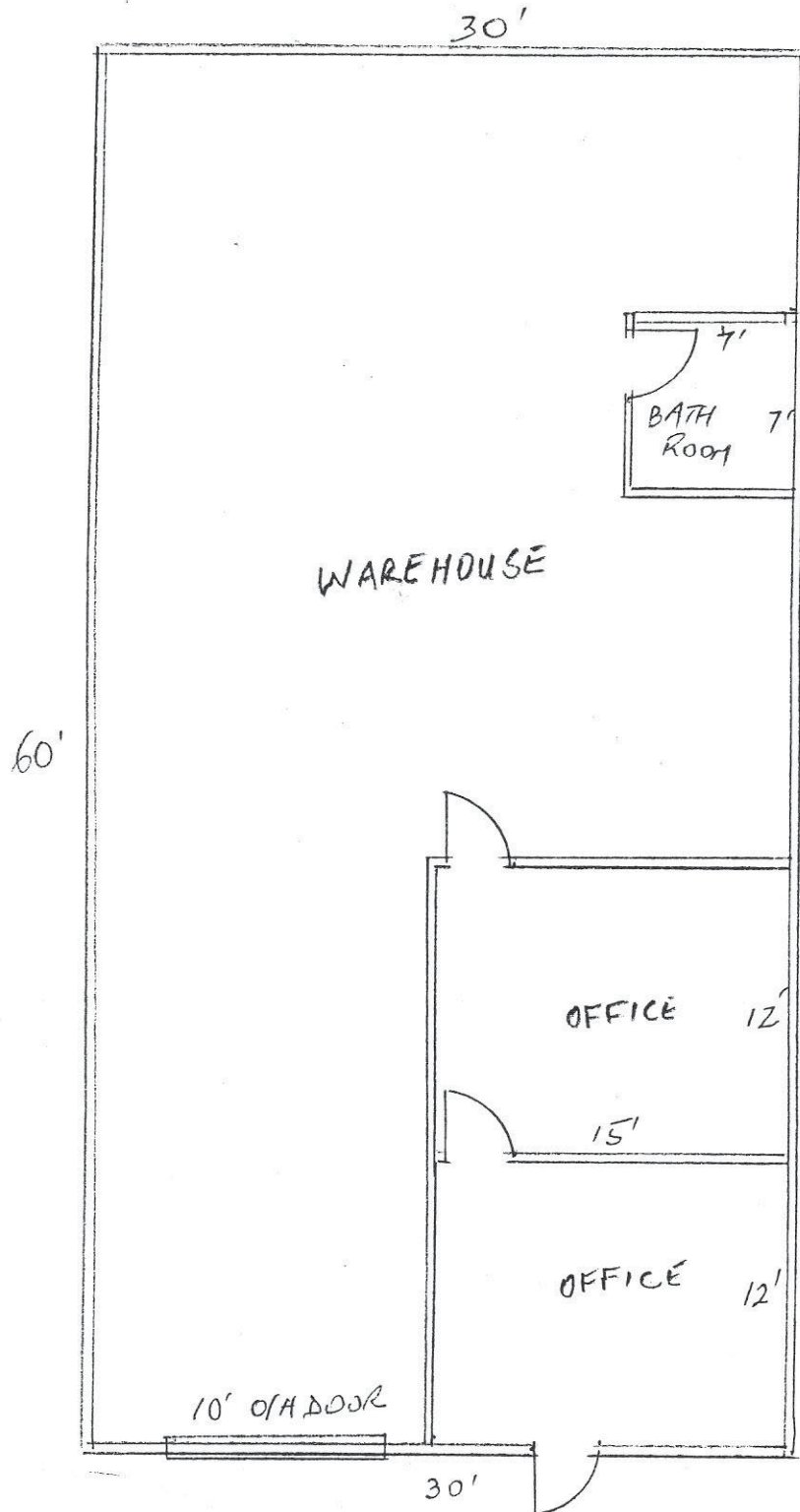
Description: Park 37 is located on Interstate Highway 37 at Navigation in the Refinery district. It consists of three well maintained buildings comprising of over 67,000 square feet of warehouse & office space. Ideal for industrial, manufacturing, office, showroom and warehouse uses.

For Lease:	Suite B-14	1,800 Sq Feet	360 sf office, 1,440 sf warehouse door, private restroom and 1 overhead door. \$1,750 per month (\$0.97 /sf)
	Front Yard	6,000 Sq Feet	In front of the building facing the street \$900 per month (\$0.15 /sf)
	Back Yard	6,600 Sq Feet	In the back of Building C \$900 per month (\$0.14 /sf)

Features: Flexible lease terms
Situated on 4.75 acres; Zoned Industrial (I-2)
Ample parking on each side of the building
Concrete Tilt-up;
Built in 1984;
Remodeled in 2000
Local management

Broker Coop: 3% Broker Cooperation Encouraged

Park 37
5233 I.H. 37, Corpus Christi, TX 78408
Suite B-14
1,800 Sq Feet
360 sf office, 1,440 sf warehouse door & 1 overhead door



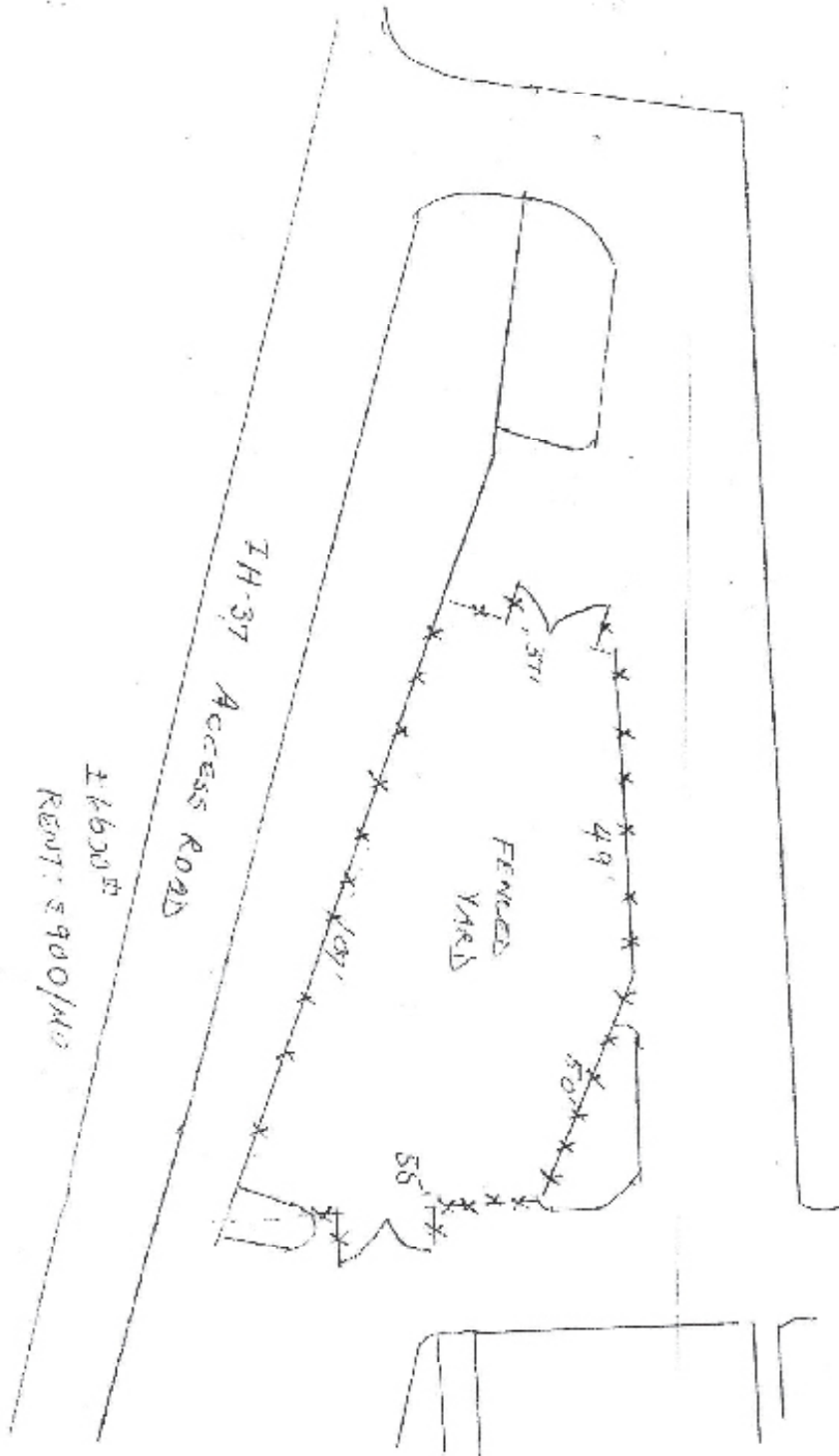
Park 37

5233 I.H. 37, Corpus Christi, TX 78408

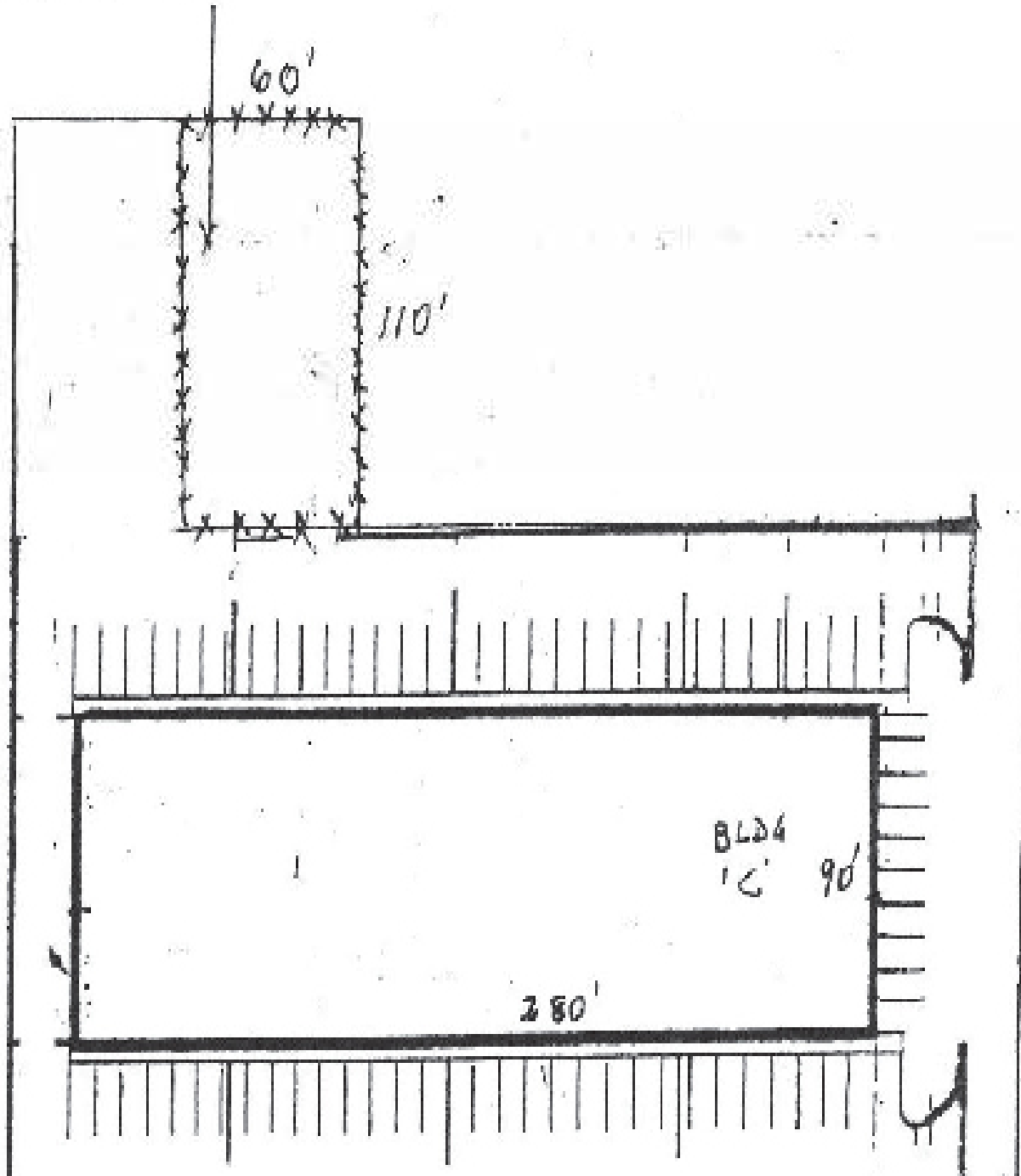
Front Yard

6,000 Sq Feet

In front of the building facing the street



Park 37
5233 I.H. 37, Corpus Christi, TX 78408
Back Yard
6,600 Sq Feet
In back of Building C



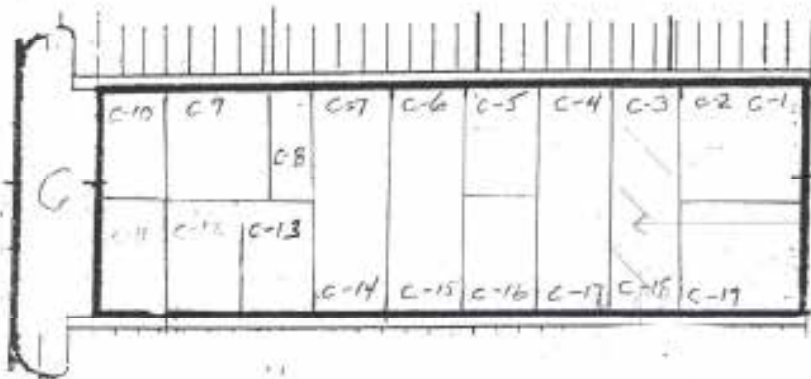
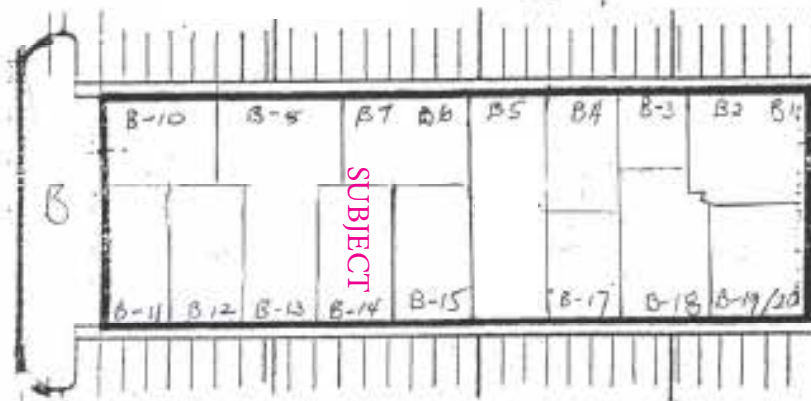
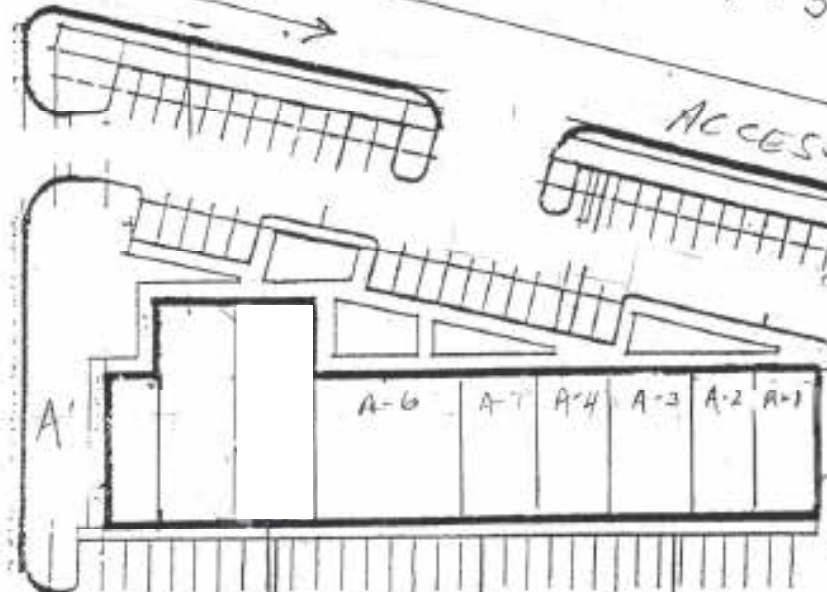
I-H-37

ACCESS ROAD

NAVIGATIL

Front Storage
Yard
For Lease

KRILL STREET



SUBJECT

SITE PLAN

PARK 37

5233 IH-37

CORPUS CHRISTI

TX 78408

350'

Back
Storage
Yard
For
Lease

EXHIBIT 'A'

PAGE 1 OF 3



Park 37 Suite B-14; 1,800 sq feet



Park 37 Suite B-14; 1,800 sq feet



Park 37 Suite B-14; 1,800 sq feet



Park 37 Front Yard; 6,000 Sq Feet





Park 37 Back Yard; 6,600 Sq Feet



Park 37



Park 37



Park 37



Park 37



Park 37
5233 I.H. 37, Corpus Christi, TX 78408
Industrial, office, showroom and warehouse

