



SPACE AVAILABLE

5493 Westmoreland Plaza
Douglasville, GA 30134

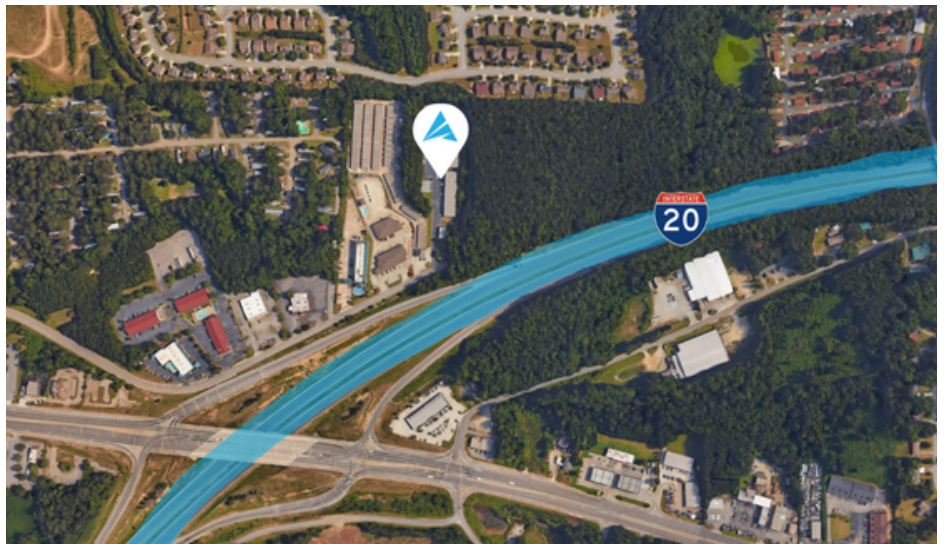


FOR LEASE



PROPERTY HIGHLIGHTS

- Move-In Suites Available
- Clear Height - 18'
- LED Lighting
- Flexible Suite Layouts
- Business Park Setting
- Institutional Ownership
- Distance to I-20: 1 Mile
- Drive-In Loading
- Ample Parking



APEX INDUSTRIAL
REAL ESTATE ADVISORS

3500 Lenox Road- Suite 1275 | Atlanta, GA 30326 | apexindustrialre.com

For more information, please contact:

ANDY HEAD

Office: (404) 595-1466
Cell: (404) 713-4601
ahead@apexindustrialre.com

EVAN ARNOLD

Office: (404) 595-1538
Cell: (770) 658-4319
earnold@apexindustrialre.com

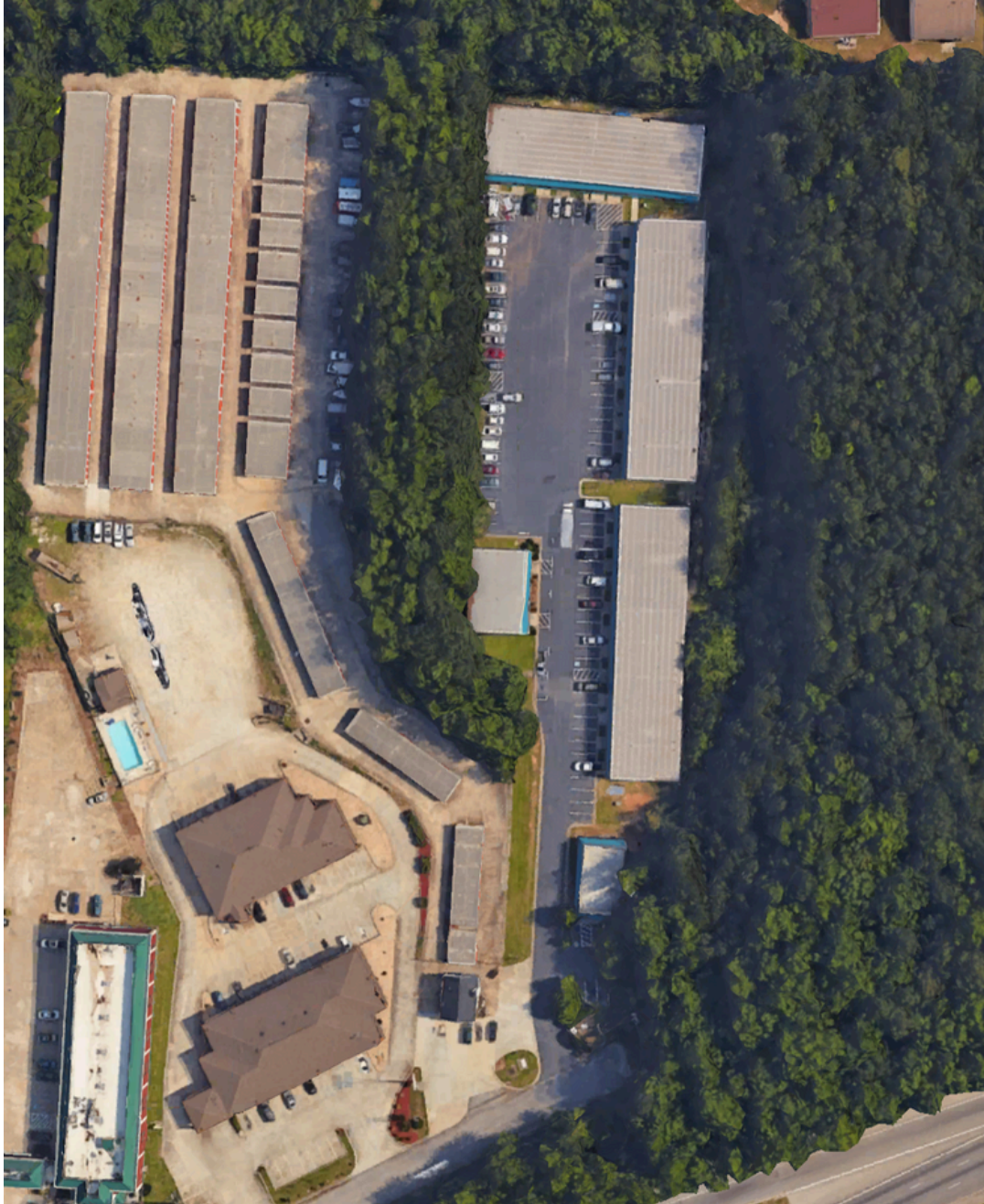
Although the information contained therein was provided from sources believed to be reliable, Apex Industrial makes no representation, expressed or implied, as to its accuracy and said information is subject to errors, omissions or changes.



SPACE AVAILABLE

5493 Westmoreland Plaza
Douglasville, GA 30134

AERIAL



APEX INDUSTRIAL
REAL ESTATE ADVISORS

3500 Lenox Road- Suite 1275 | Atlanta, GA 30326 | apexindustrialre.com

For more information, please contact:

ANDY HEAD

Office: (404) 595-1466
Cell: (404) 713-4601
ahead@apexindustrialre.com

EVAN ARNOLD

Office: (404) 595-1538
Cell: (770) 658-4319
earnold@apexindustrialre.com

Although the information contained therein was provided from sources believed to be reliable, Apex Industrial makes no representation, expressed or implied, as to its accuracy and said information is subject to errors, omissions or changes.